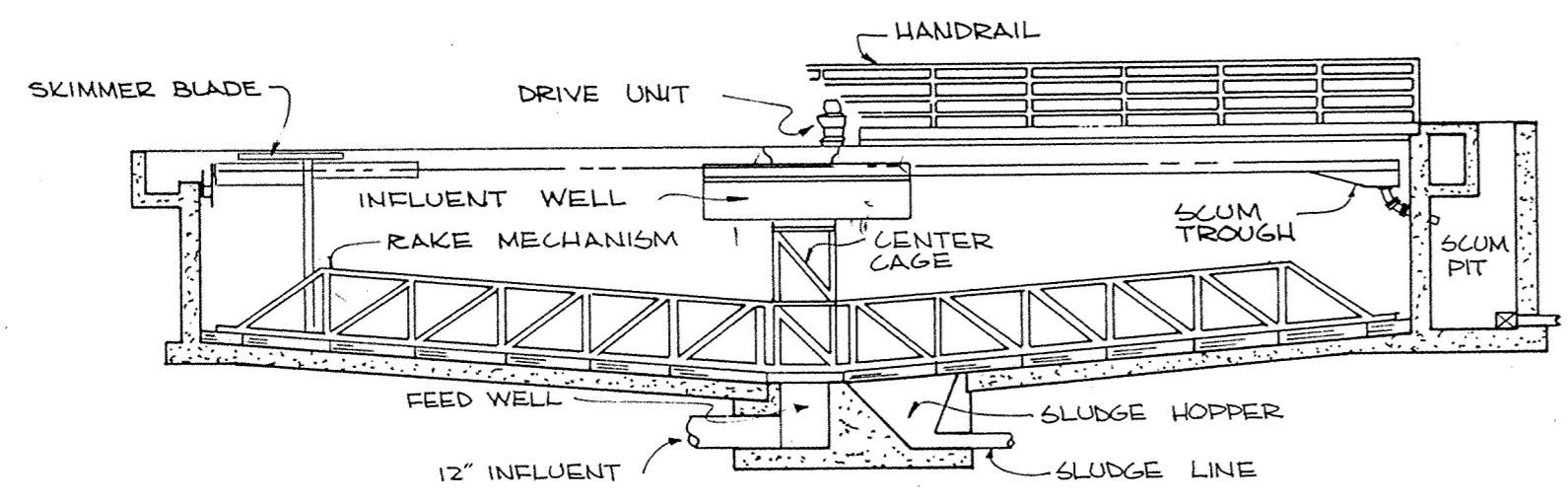
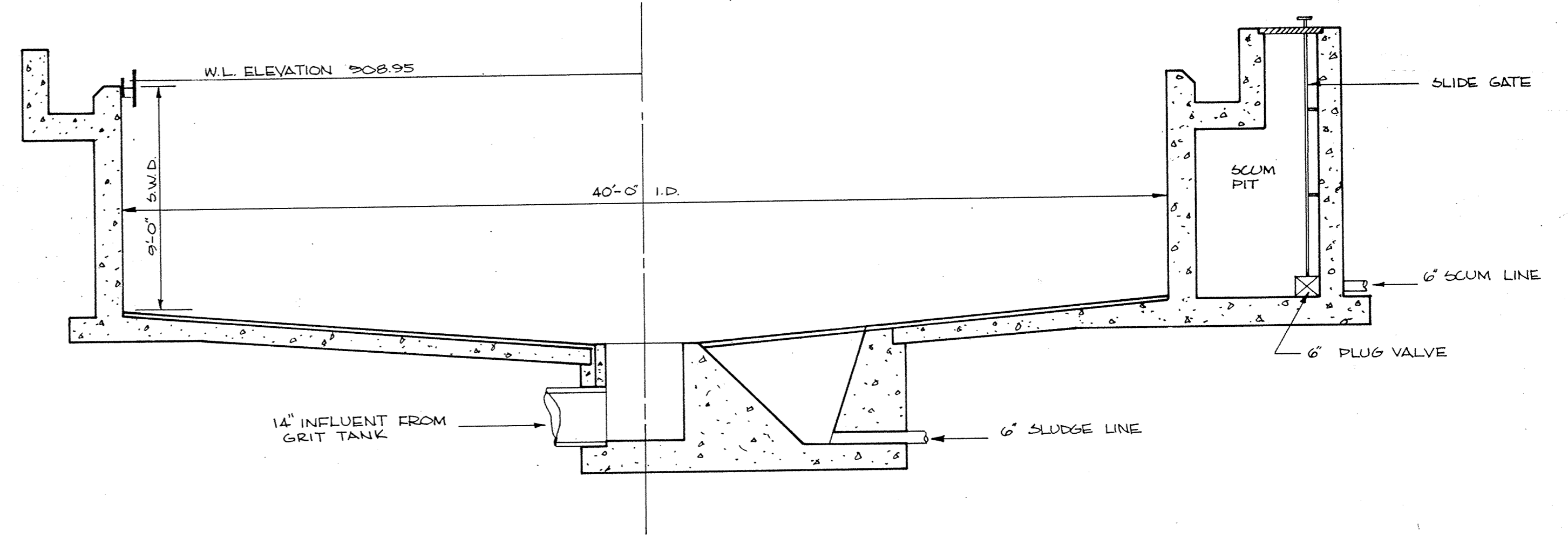


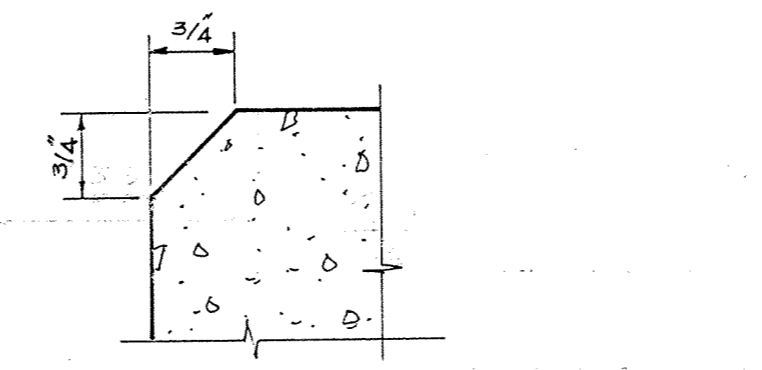
PLAN VIEW PRIMARY CLARIFIER
SCALE: 1/4" = 1'-0"



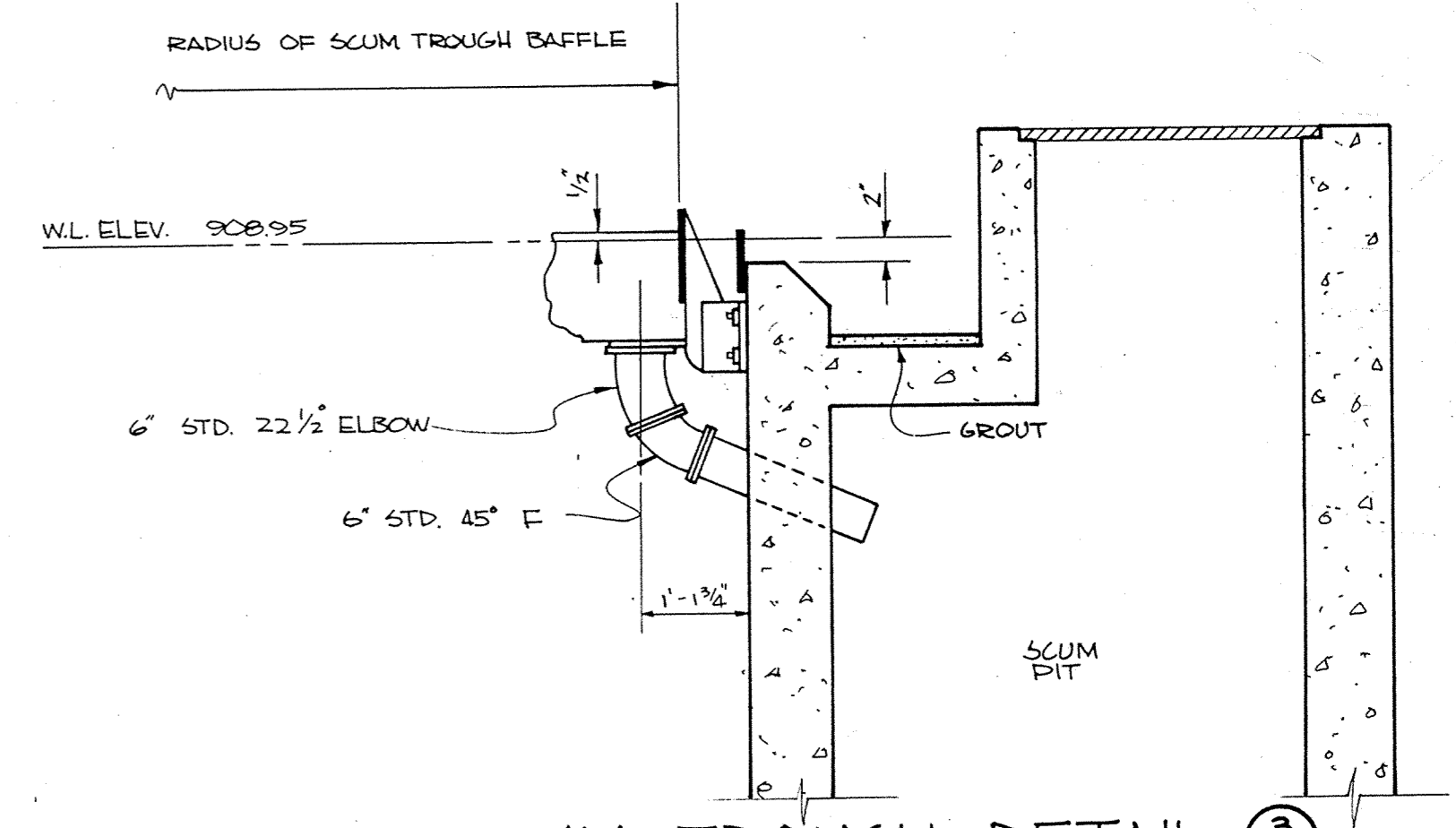
TYPICAL CLARIFIER MECHANISM
NO SCALE



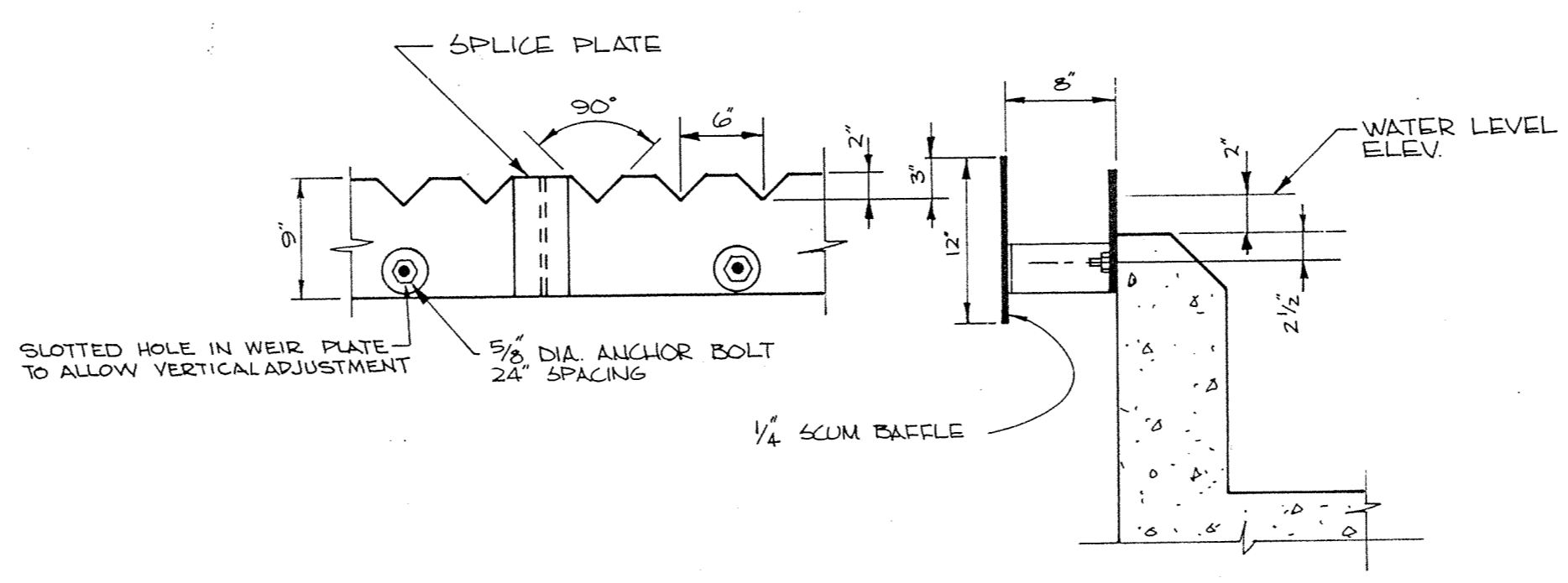
SECTION A-A
NO SCALE



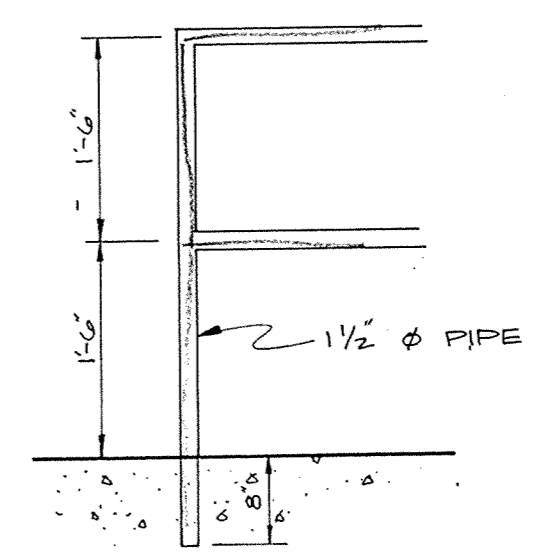
CHAMFER DETAIL 1/21
NO SCALE



SCUM TROUGH DETAIL 3/21
NO SCALE



WEIR DETAIL 2/21
NO SCALE



HANDRAIL DETAIL 4/21
SCALE: 3/4" = 1'-0"

NO.	DATE	BY	REMARKS
A	7-6-76	J.R.C.	ADDED SKIMMER TO MECHANISM DETAIL

DESIGNED K.L.V.	CHECKED K.L.V.
DRAWN S.W.J.	APPROVED W.H.M.
DATE 8/25/75	COMM.

I HEREBY CERTIFY THAT THIS PLAN WAS PREPARED BY ME OR UNDER MY DIRECT SUPERVISION AND THAT I AM A DULY REGISTERED PROFESSIONAL ENGINEER UNDER THE LAWS OF THE STATE OF MINNESOTA.
Karen Van Raeken
DATE: Aug 29, 1975 REG. NO. 10159

McCOMBS-KNUTSON ASSOCIATES, INC.
CONSULTING ENGINEERS ■ LAND SURVEYORS ■ SITE PLANNERS
MINNEAPOLIS, HUTCHINSON and MARSHALL, MINNESOTA

WASTE WATER TREATMENT FACILITIES
FOR
ELK RIVER, MINNESOTA

SCALE AS NOTED
BOOK PAGE
FILE NO. 2603

MECHANICAL PLAN
PRIMARY CLARIFIER NO. 2

SHEET 21	REV. A
OF 31	