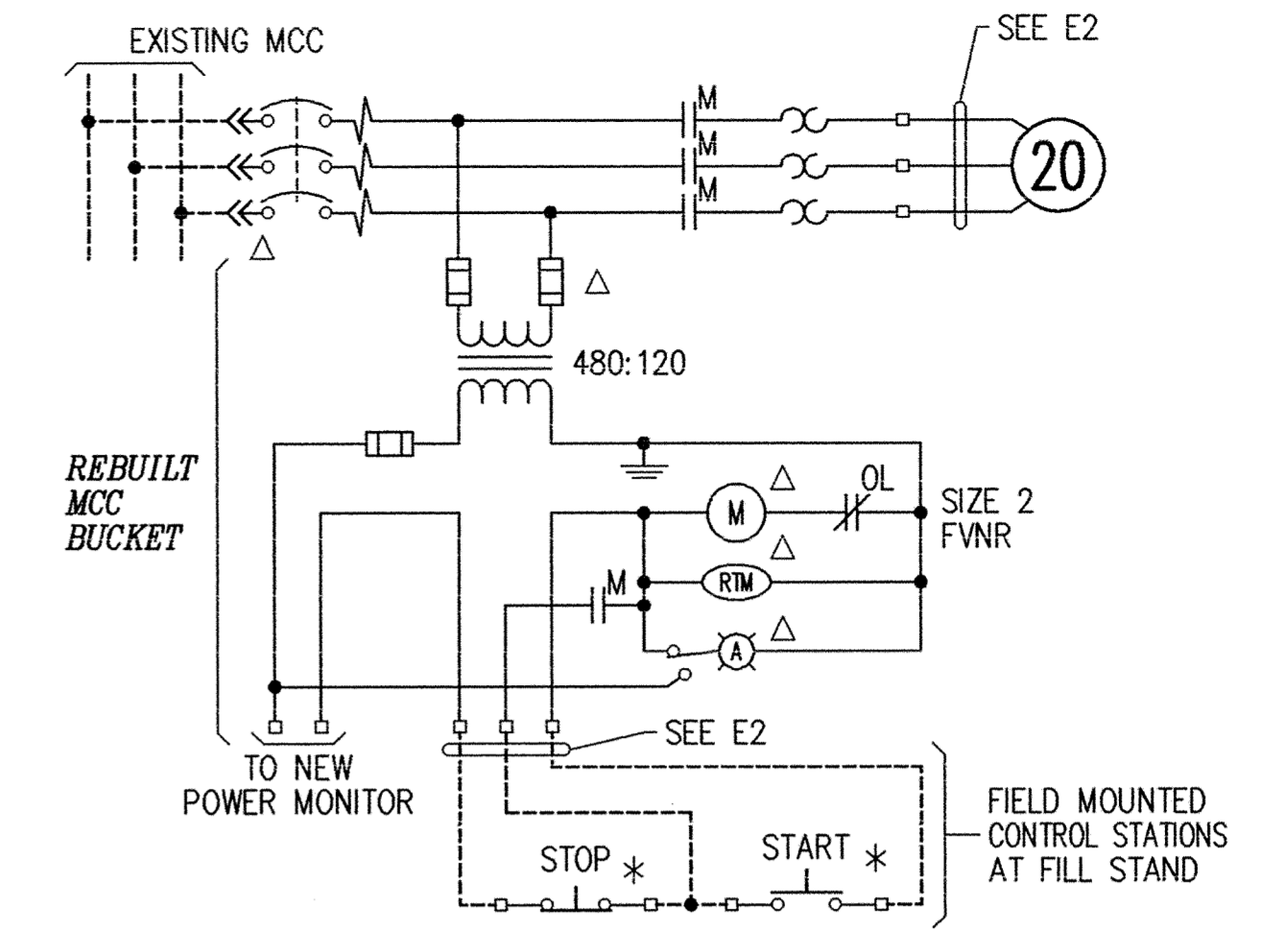
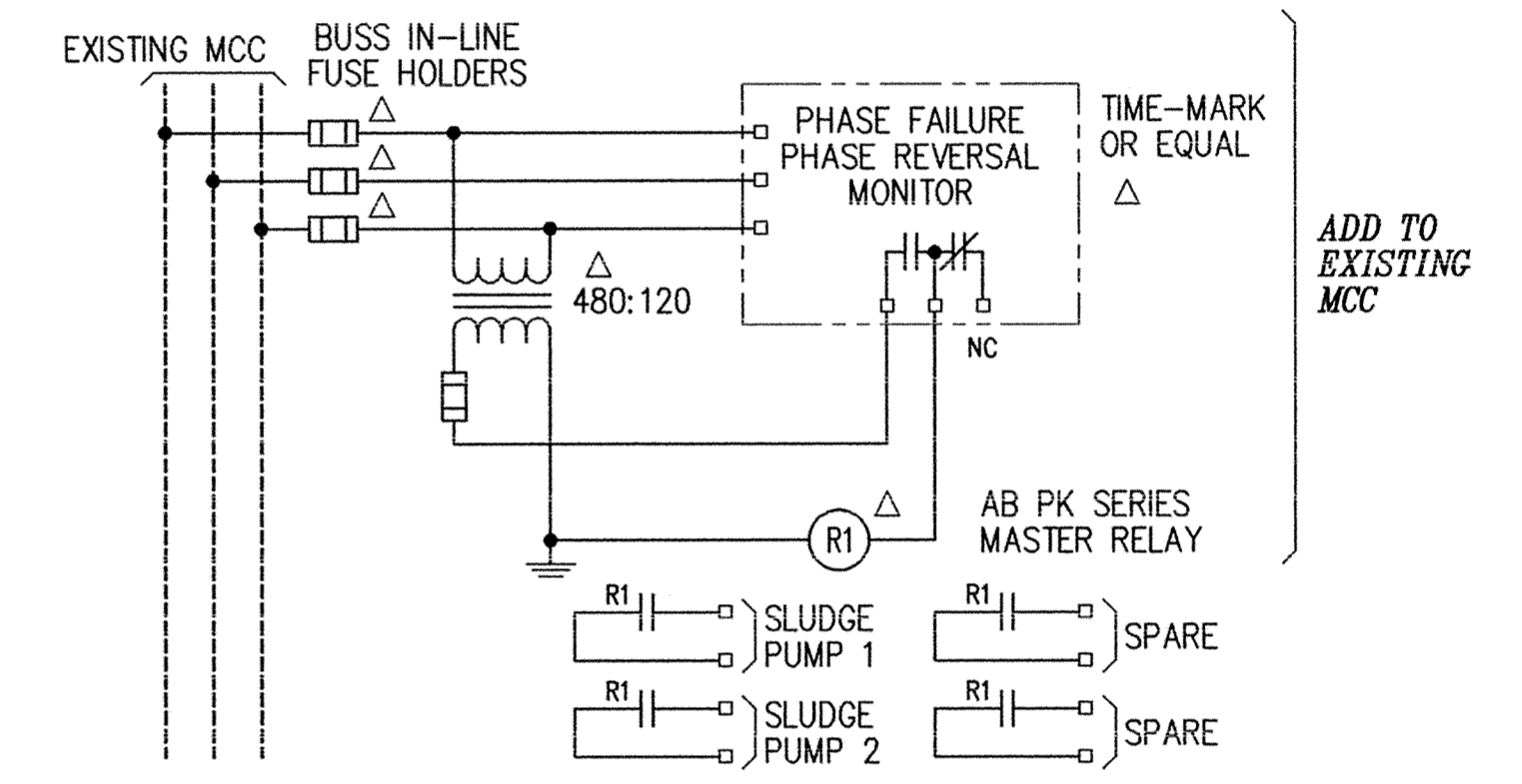


**EXISTING MAIN BUILDING ELECTRICAL MODIFICATION PLAN**  
 SCALE: 1/8" = 1'-0"  
 North ↑  
 0 2 4 6 8 12 16 24  
 Graphic Scale

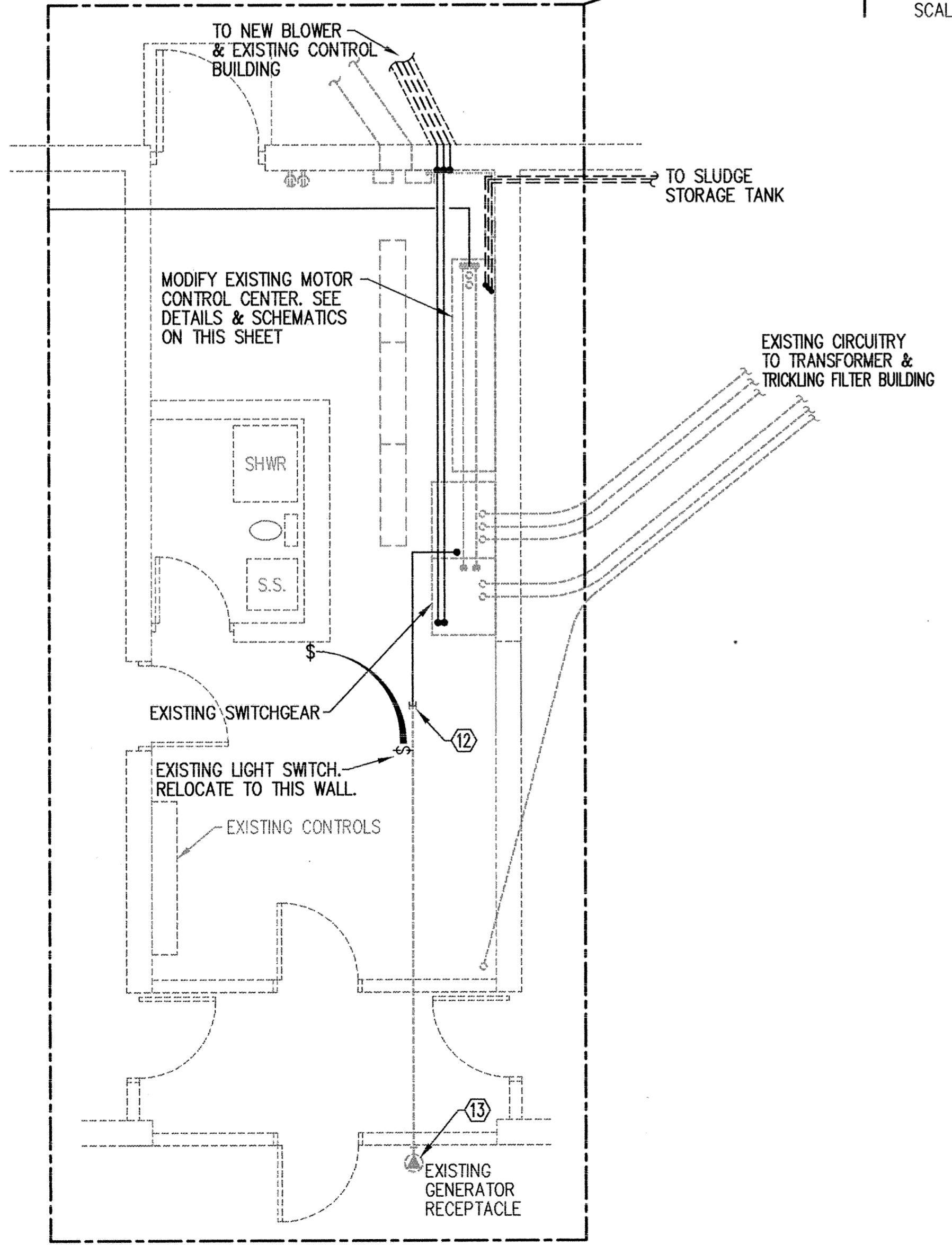
- NUMBERED NOTES**
- ① REARRANGE EXISTING PANEL CIRCUITRY TO ACCOMMODATE NEW LOADS. RETYPE CIRCUIT DIRECTORY PER CHANGES MADE BY THIS CONTRACT
  - ② DUPLEX GFI OUTLET AT 42" (DO NOT USE FEED-THRU FEATURE)
  - ③ CONTROL STATION FURNISHED WITH DOOR. INSTALL & WIRE. ASSUME 7-1/C-#14-1/2" TO OPERATOR. CONFIRM.
  - ④ DOOR OPERATOR. MAKE CONNECTIONS. INSTALL DISCONNECT. WIRE TO LP IN EXISTING MCC & MAKE CONNECTIONS. 2-1/C-#12-3/4" TYP.
  - ⑤ 2-1/C-#12-1/2" TO EXISTING LP. CONNECT TO EXISTING AVAILABLE BREAKER. TYP.
  - ⑥ 3-1/C-#12-1/2" TO EXISTING LP. CONNECT TO EXISTING AVAILABLE BREAKERS.
  - ⑦ DOOR OPERATOR. INSTALL DISCONNECT. MAKE CONNECTIONS TO NEW ELECTRICAL PANEL IN WEST GARAGE, SEE SHEET E11
  - ⑧ UNIT HEATER. INSTALL DISCONNECT & MAKE CONNECTIONS. ROUTE 2-1/C-#12-1/2" TO EXISTING PANEL LP
  - ⑨ T'STAT FOR UNIT HEATERS UH-6 & UH-7. MAKE CONNECTIONS W/ 2-1/C-#14-1/2"
  - ⑩ DAMPER MOTOR. ROUTE 2-1/C-#12-1/2" TO EXHAUST FAN EF6.
  - ⑪ EXHAUST FAN EF6 AT ROOF. MAKE CONNECTIONS. 2-1/C-#12-1/2" TO MANUAL STARTER.
  - ⑫ EXTEND EXISTING CONDUIT TO SWITCHGEAR. INSTALL 3-1/C-500MCM, 1-1/C-#3/0 FROM EXISTING GENERATOR RECEPTACLE TO NEW BREAKER IN SWITCHGEAR. 3" CONDUIT, FIELD CONFIRM
  - ⑬ CONFIRM EXACT PART NUMBER ON 480V, 400A RECEPTACLE. FURNISH & INSTALL MATING PLUG ON EXISTING CITY OWNED GENERATOR.
  - ⑭ MANUAL STARTER FOR EF4. ROUTE 2-1/C-#12-1/2" TO EXISTING POWER PANEL. MAKE CONNECTIONS.



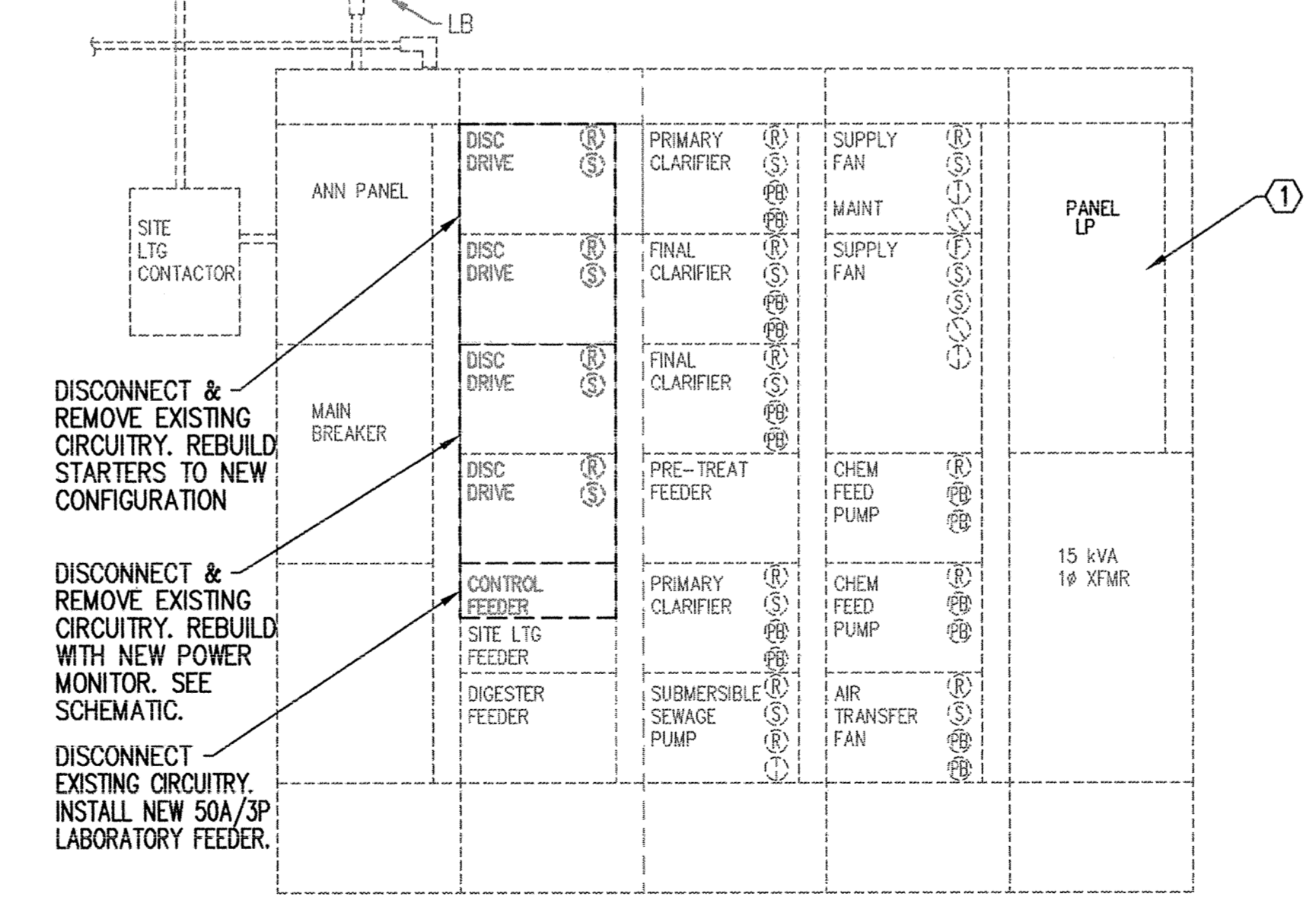
**SUBMERSIBLE SLUDGE PUMP SCHEMATIC**  
 NO SCALE TYPICAL



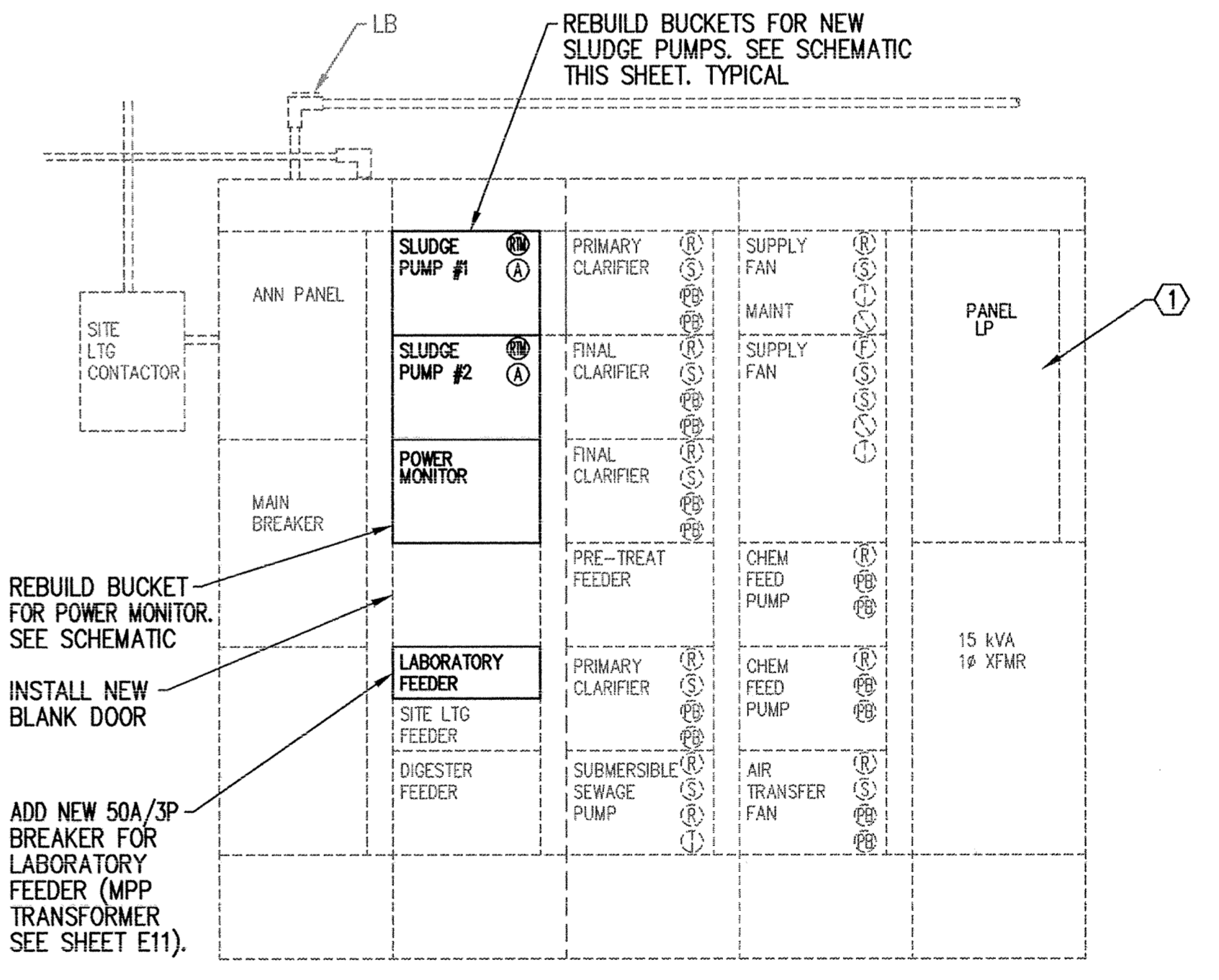
**POWER MONITOR SCHEMATIC**  
 NO SCALE TYPICAL



**ENLARGED PARTIAL PLAN**  
 SCALE: 1/4" = 1'-0"



**EXISTING MOTOR CONTROL CENTER ELEVATION**  
 SCALE: 3/4" = 1'-0"  
 EXISTING MAIN BUILDING



**REVISED MOTOR CONTROL CENTER ELEVATION**  
 SCALE: 3/4" = 1'-0"

This drawing was prepared by:  
 Kaeding & Associates, Inc.  
 7300 France Avenue South  
 Suite 330  
 Minneapolis, MN 55435  
 Telephone: (612) 831-0317  
 Fax: (612) 831-2179

I HEREBY CERTIFY THAT THIS PLAN, SPECIFICATION, OR REPORT WAS PREPARED BY ME OR UNDER MY DIRECT SUPERVISION AND THAT I AM A DULY REGISTERED PROFESSIONAL ENGINEER UNDER THE LAWS OF THE STATE OF MINNESOTA.  
  
 DATE 06 OCT 95 REG. NO. 9955



1326 ENERGY PARK DRIVE  
 ST. PAUL, MINNESOTA 55108  
 (612) 644-4389  
 5075 WAYZATA BLVD. SUITE 225  
 MINNEAPOLIS, MINNESOTA 55441  
 (612) 546-0432

DATE	DESCRIPTION	DESIGNED PFK	CHECKED PFK

GRAPHIC SCALE  
 0 HORIZ.  
 0 VERT.