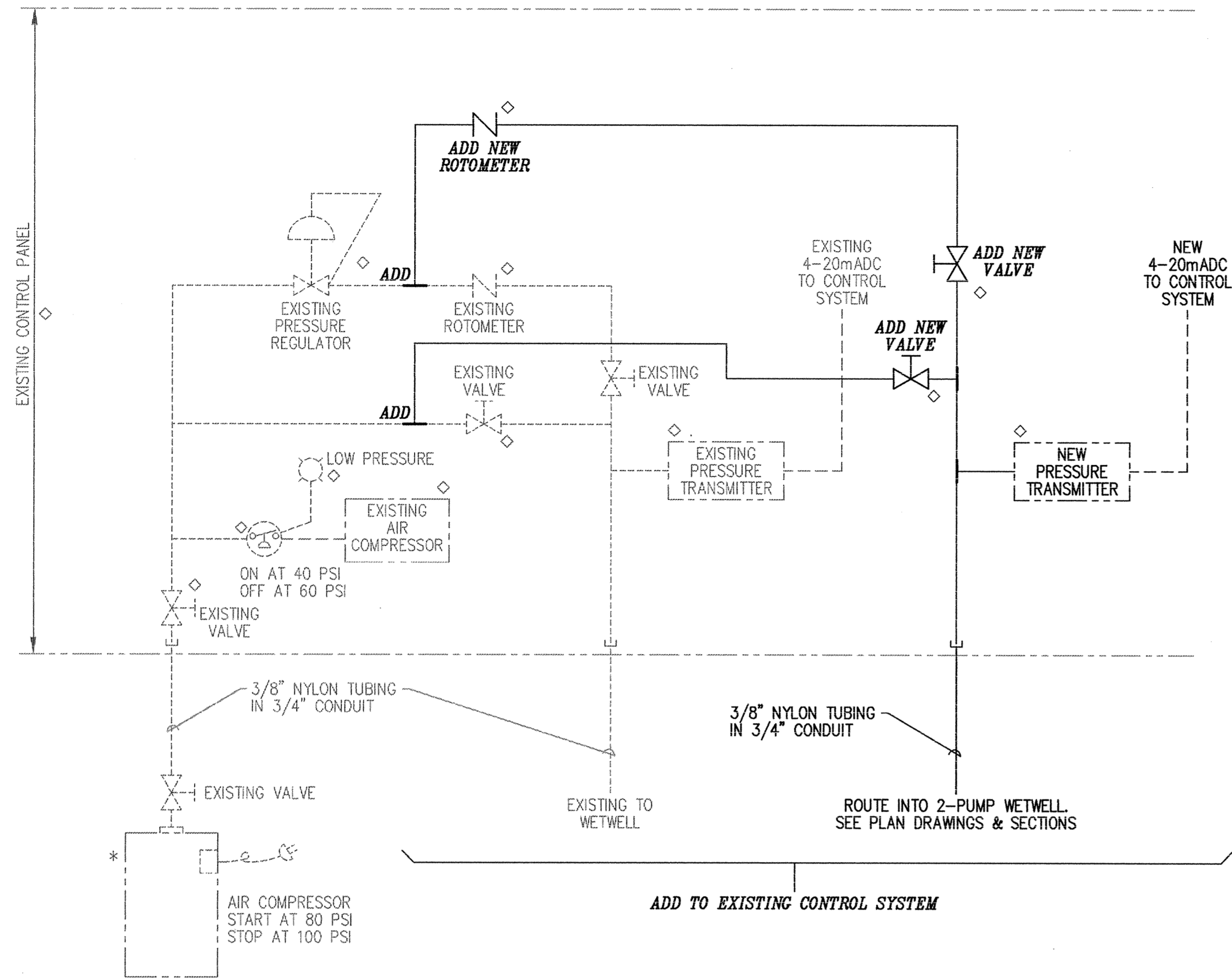
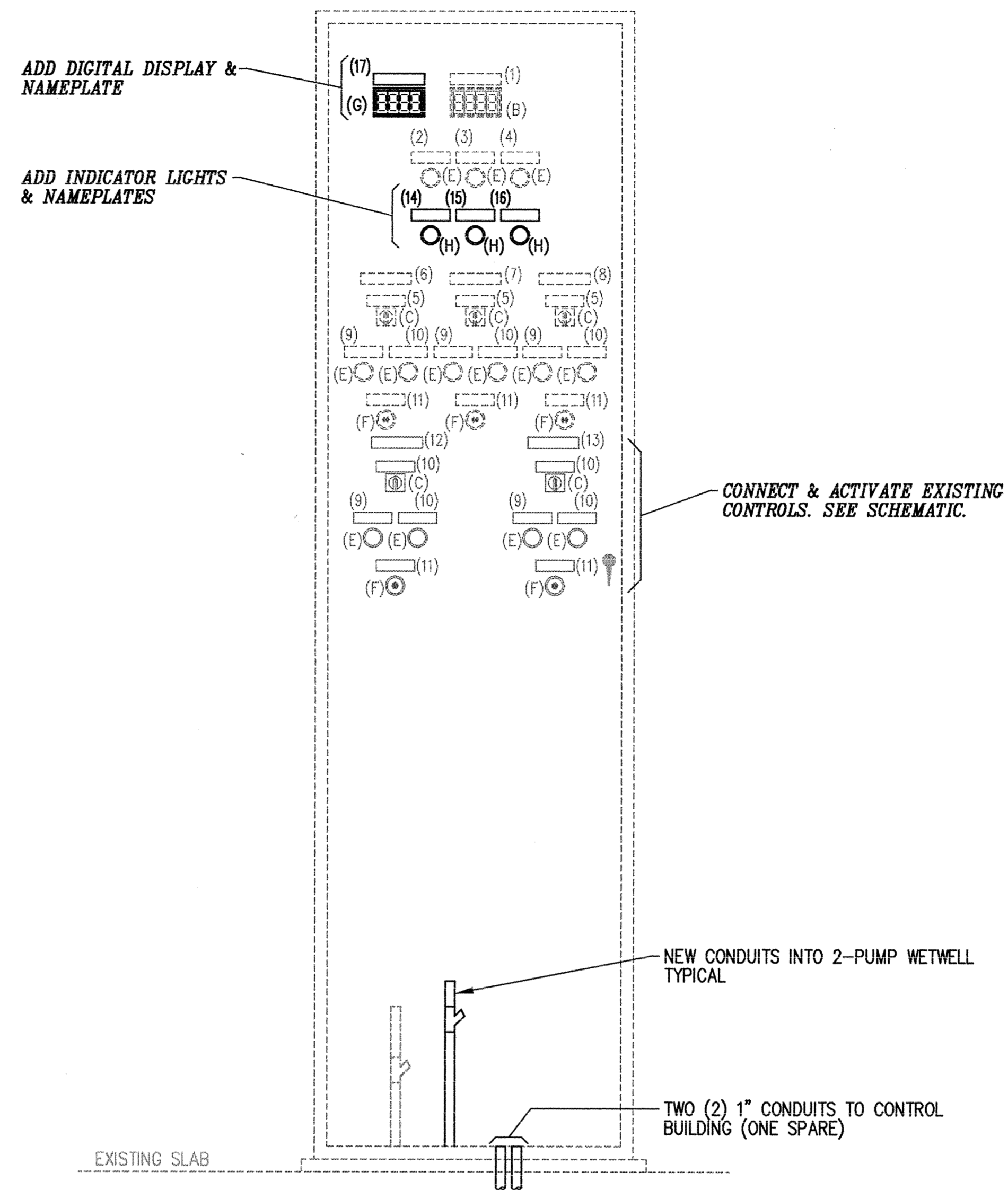


KAI#94356H1--SHEET E8--PS. 1=1



EXISTING TRICKLING FILTER WETWELL AIR PIPING DRAWING
NO SCALE MODIFICATIONS



EXISTING CONTROL PANEL ELEVATION
SCALE: 1 1/2"=APPROXIMATELY 1'-0" MODIFICATIONS

EXISTING CONTROL PANEL SCHEDULE							
DEVICES				NAMEPLATES			
ITEM DESIGNATION	DEVICE DESCRIPTION	RANGE	REMARKS	ITEM DESIGNATION	NAMEPLATE INSCRIPTION	RANGE	REMARKS
				1	TRICKLING FILTER PUMP WETWELL		
B	2 1/2-DIGIT DIGITAL DISPLAY	00.9 TO 19.9	EXISTING	2	HIGH LEVEL ALARM		EXISTING
C	2-POSITION SELECTOR SWITCH		EXISTING	3	LOW LEVEL ALARM		EXISTING
D	3-POSITION SELECTOR SWITCH		EXISTING	4	LOW AIR PRESSURE		EXISTING
E	INDICATOR LIGHT		EXISTING	5	AUTO-OFF-RUN		EXISTING
F	PUSHBUTTON SWITCH		EXISTING	6	TFP-1		EXISTING
G	2 1/2-DIGIT DIGITAL DISPLAY	00.9 TO 19.9	NEW	7	TFP-2		EXISTING
H	INDICATOR LIGHT		NEW	8	TFP-3		EXISTING
				9	MOTOR HOT		EXISTING
				10	SEAL FAILURE		EXISTING
				11	RESET		EXISTING
				12	TFP-4		EXISTING
				13	TFP-5		EXISTING
				14	CLARIFIER HIGH TORQUE		NEW
				15	WETWELL #2 LOW LEVEL ALARM		NEW
				16	WETWELL #2 HIGH LEVEL ALARM		NEW
				17	WETWELL #2 LEVEL		NEW
REMARKS FOR THIS SCHEDULE							
1.		2.		3.			

This drawing was prepared by:
Reading & Associates, Inc.
7300 France Avenue South
Suite 330
Minneapolis, MN 55435
Telephone: (612) 831-0317
Fax: (612) 831-2179

I HEREBY CERTIFY THAT THIS PLAN, SPECIFICATION, OR REPORT WAS PREPARED BY ME OR UNDER MY DIRECT SUPERVISION AND THAT I AM A DULY REGISTERED PROFESSIONAL ENGINEER UNDER THE LAWS OF THE STATE OF MINNESOTA.
Paul J. ...
DATE 05 OCT 95 REG. NO. 9955



1326 ENERGY PARK DRIVE
ST. PAUL, MINNESOTA 55108
(612) 644-4389
5075 WAYZATA BLVD. SUITE 225
MINNEAPOLIS, MINNESOTA 55441
(612) 546-0432

DATE	DESCRIPTION	DESIGNED PFK
		CHECKED PFK
		DRAWN JGB/CPM
		GRAPHIC SCALE
		0 HORIZ.
		0 VERT.

CITY OF ELK RIVER
WASTEWATER TREATMENT FACILITIES
TRICKLING FILTER PUMP STATION CONTROL PANEL

E8

DATE OCT 1995 SHEET 94 OF 112 SHEETS PROJECT NO. 230-151