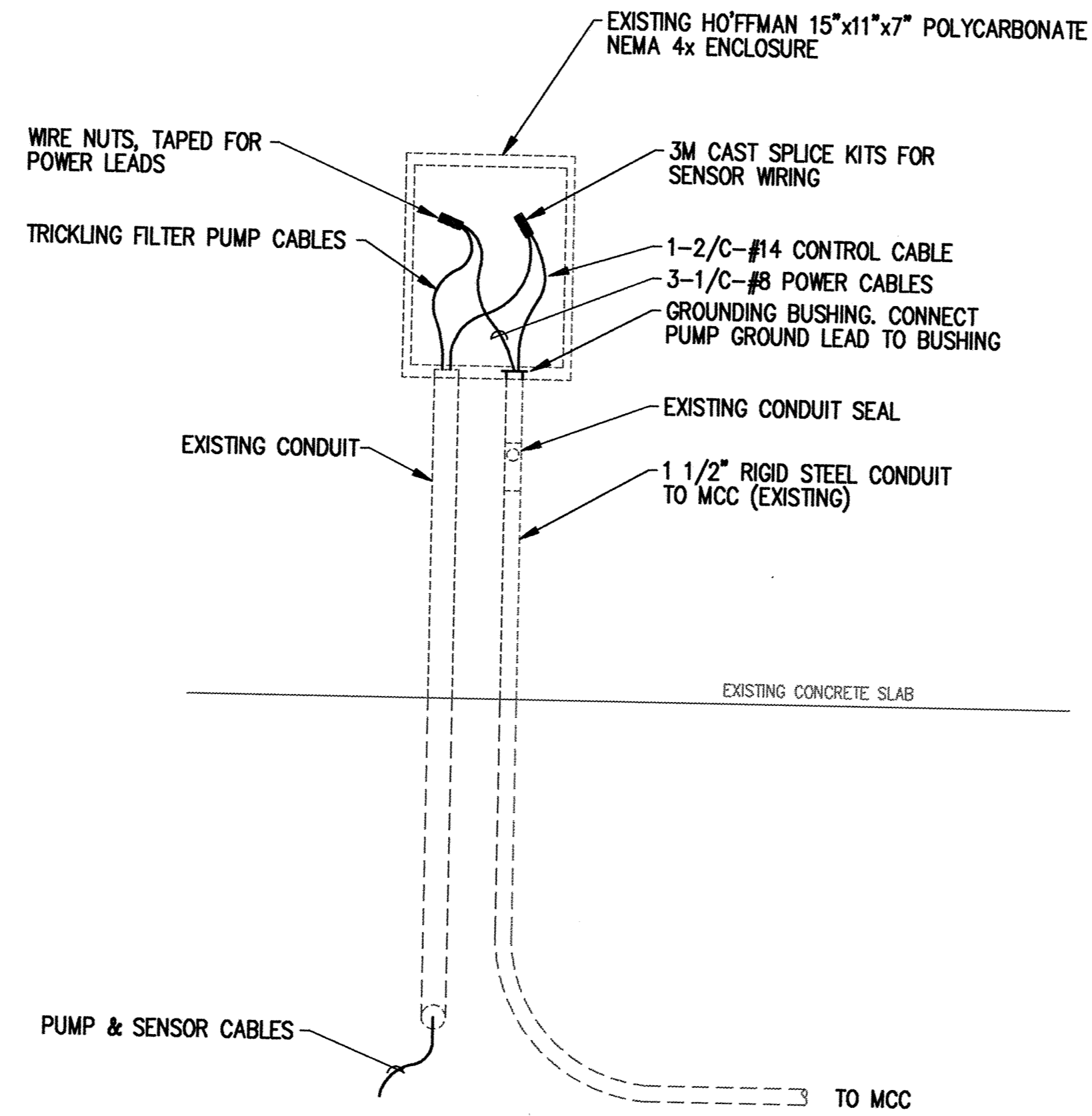
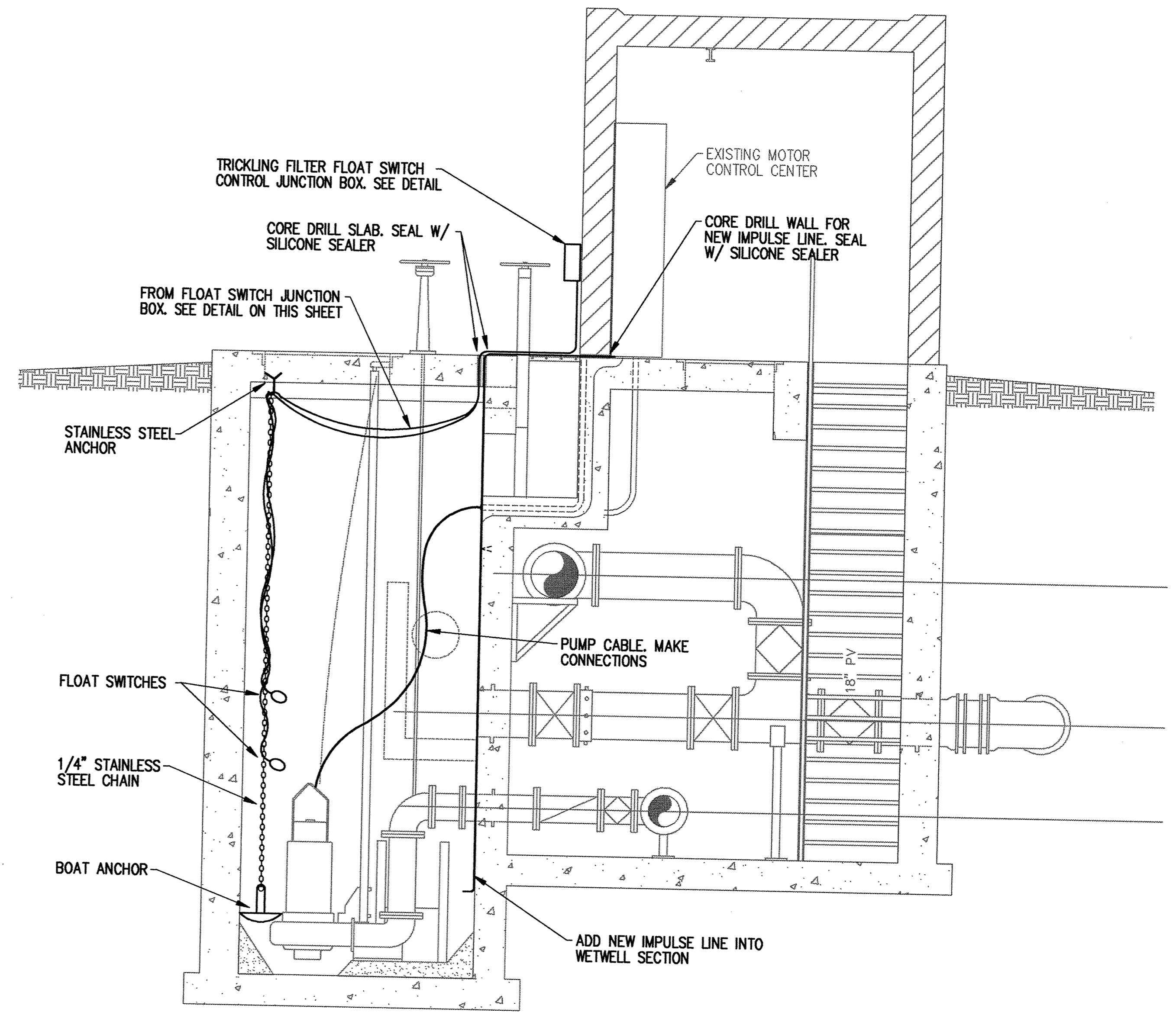


TRICKLING FILTER FLOAT SWITCH CONTROL JUNCTION BOX DETAIL
NO SCALE



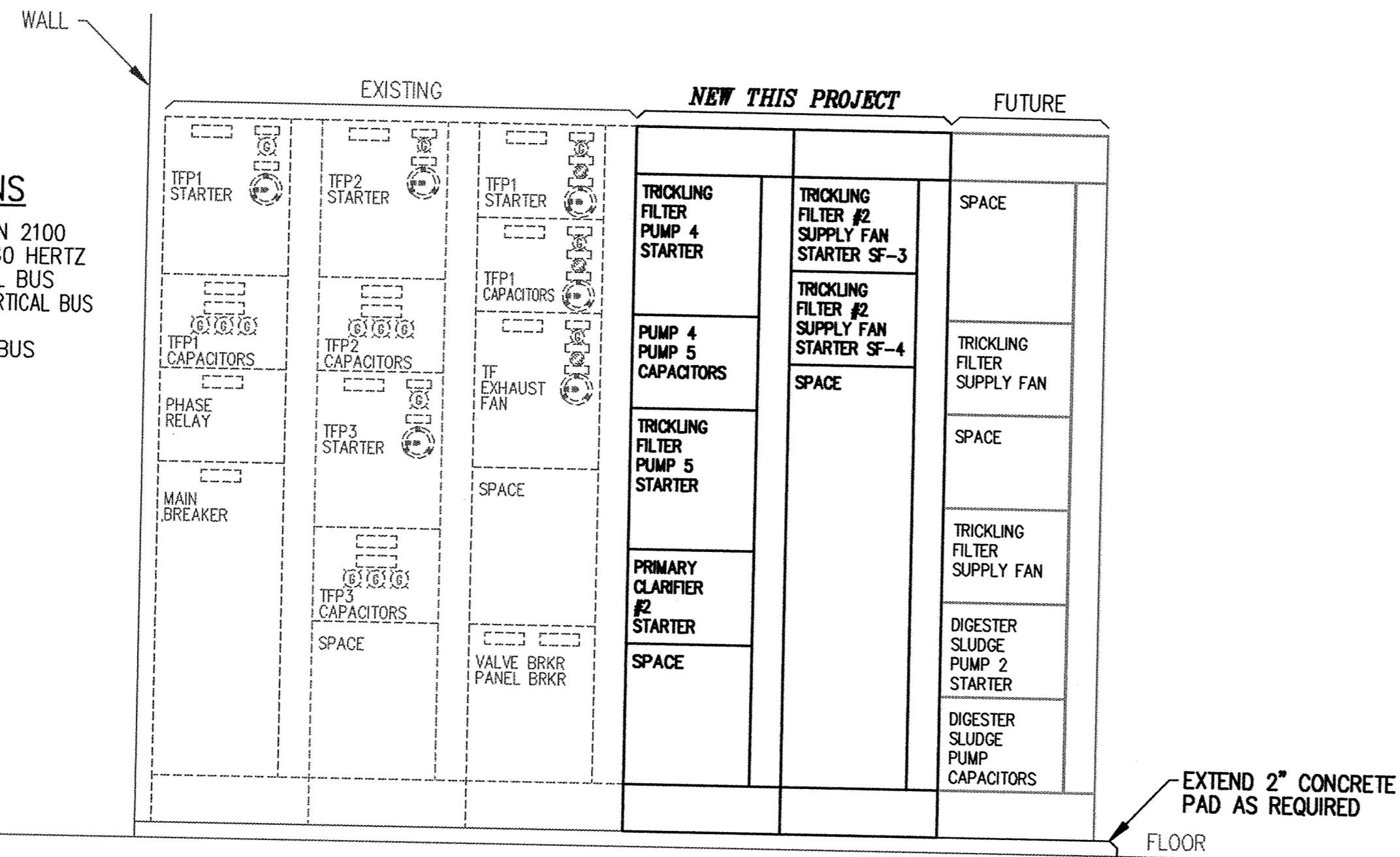
TRICKLING FILTER PUMP STATION JUNCTION BOX DETAIL
EXISTING-TYPICAL
NO SCALE



TRICKLING FILTER PUMP STATION SECTION
SCALE: 3/8" = 1'-0"
MAIN LEVEL

EXISTING MCC SPECIFICATIONS

MANUFACTURER: WESTINGHOUSE BULLETIN 2100
VOLTAGE: 480 VAC, 3 PHASE, 4 WIRE, 60 HERTZ
BUSSING: 800 AMP, COPPER HORIZONTAL BUS
300 AMP, TIN-PLATED COPPER VERTICAL BUS
NEUTRAL PLATE
HORIZONTAL COPPER GROUND BUS
INTERRUPTING CAPACITY: 42,000 AIC
ENCLOSURE: NEMA 1G
WIRING: CLASS II, TYPE B
INCOMING LUGS: 500 MCM 2/PER PHASE
FINISH: ANSI 61 MEDIUM LIGHT GREY
UL SERVICE ENTRANCE LABELED



EXISTING TRICKLING FILTER PUMP STATION MCC ELEVATION
SCALE: 3/4" = 1'-0"
MODIFICATIONS

This drawing was prepared by:
Reading & Associates, Inc.
7300 France Avenue South
Suite 330
Minneapolis, MN 55435
Telephone: (612) 831-0317
Fax: (612) 831-2179

I HEREBY CERTIFY THAT THIS PLAN, SPECIFICATION, OR REPORT WAS PREPARED BY ME OR UNDER MY DIRECT SUPERVISION AND THAT I AM A DULY REGISTERED PROFESSIONAL ENGINEER UNDER THE LAWS OF THE STATE OF MINNESOTA.
[Signature]
DATE: 06 OCT 95 REG. NO.: 9955



1326 ENERGY PARK DRIVE
ST. PAUL, MINNESOTA 55108
(612) 644-4389

5075 WAYZATA BLVD, SUITE 225
MINNEAPOLIS, MINNESOTA 55441
(612) 546-0432

REVISIONS	DATE	DESCRIPTION	DESIGNED	PKF

CITY OF ELK RIVER
WASTEWATER TREATMENT FACILITIES
TRICKLING FILTER PUMP STATION SECTION & DETAILS

E5