

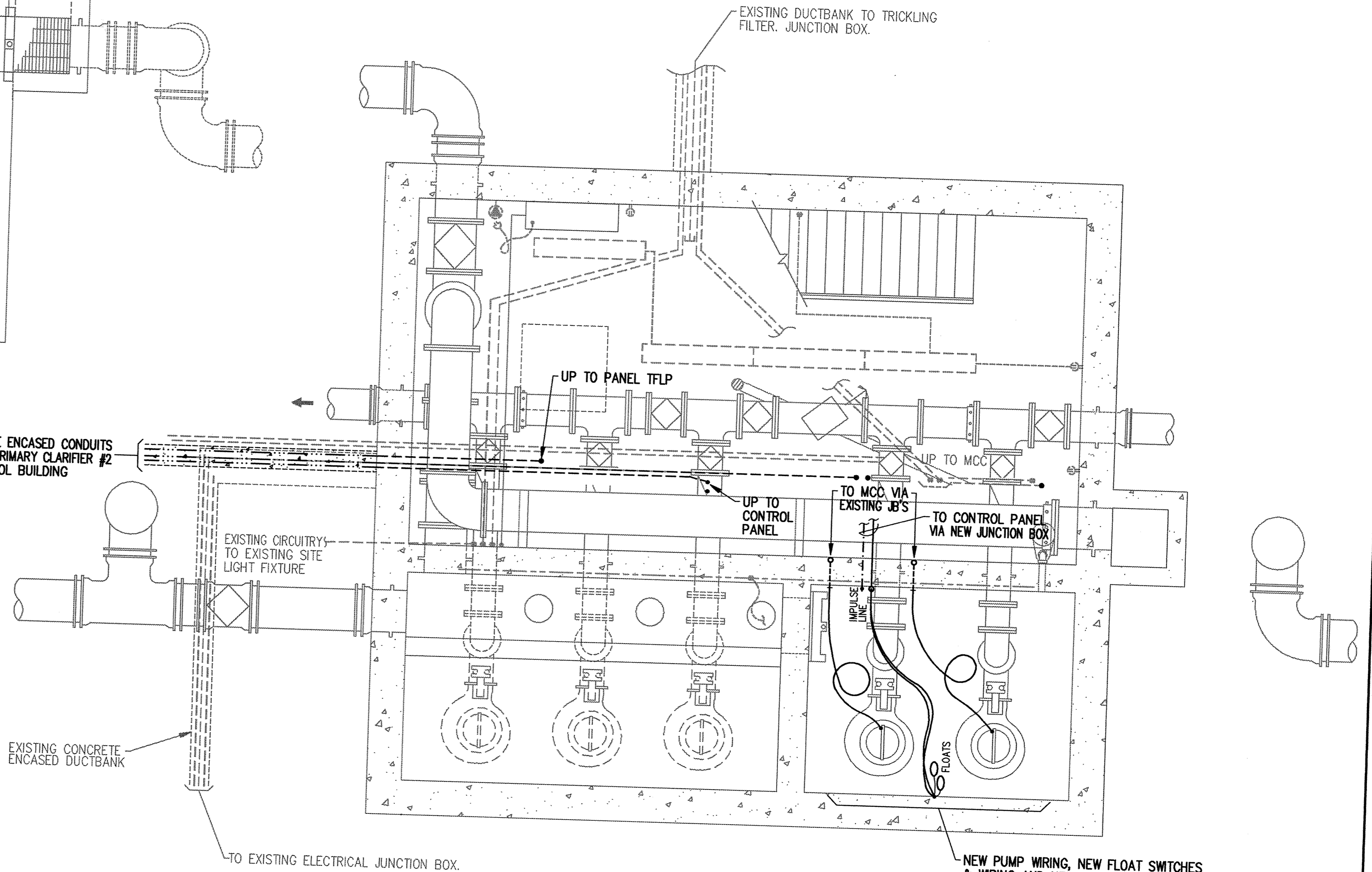
NOTE:
 JUNCTION BOXES FOR TWO TRICKLING PUMPS ARE EXISTING. JUNCTION BOX FOR BUBBLER LINE & FLOAT SWITCHES SHALL BE ADDED. CONDUIT FROM JUNCTION BOX TO WETWELL SHALL BE RUN ON TOP OF GRATING

North
TRICKLING FILTER PUMP STATION ELECTRICAL PLAN
 SCALE: 3/8" = 1'-0"
 MAIN LEVEL
 0 1 2 3 4 6
 Graphic Scale

EXISTING TRICKLING FILTER LIGHTING PANEL, TFLP									
MOUNTING	LOCATION	SERVICE				REMARKS			
		AMPS	VOLTS	PHASE	WIRE				
SURFACE	TRICKLING FILTER PUMP STATION, MAIN LEVEL	200	120/208	3	4	100AMP MAIN BREAKER			
CIRCUIT DESCRIPTION	BKR	CKT	ANTICIPATED LOAD IN VA	PHASE	ANTICIPATED LOAD IN VA	CKT	BKR	CIRCUIT DESCRIPTION	
CONTROL PANEL	20A1P	1	800	A	1500	2	20A1P	AIR COMPRESSOR OUTLET	
LIGHTS	20A1P	3	900	B	1000	4	20A1P	SUMP PUMP	
OUTLETS, EXTERIOR LIGHTS	20A1P	5	800	C		6	20A1P	TRICKLING FILTER LIGHTS	
UNIT HEATER	15A1P	7	300		200	8	20A1P	TRICKLING FILTER CONVENIENCE OUTLETS	
SPARE	20A1P	9			400	10	20A	SITE LIGHTING	
	20A1P	11			400	12	2P	"	
	20A1P	13			200	14	20A1P	SITE LIGHTING CONVENIENCE OUTLETS	
	20A1P	15			500	16	20A	AIR COMPRESSOR	
SPACE		17			500	18	2P	"	
		19				20	20A1P	SPARE	
		21				22		SPACE	
		23			500	24	20A1P	OUTLET AT CLARIFIER	
		25				26		SPACE	
		27				28			
		29				30			
		31				32			
		33				34			
		35				36			
		37				38			
		39				40			
		41				42			

ADD CIRCUIT BREAKER IN AVAILABLE SPACE

CONCRETE ENCASED CONDUITS TO NEW PRIMARY CLARIFIER #2 & CONTROL BUILDING



North
TRICKLING FILTER PUMP STATION ELECTRICAL PLAN
 SCALE: 3/8" = 1'-0"
 LOWER LEVEL
 0 1 2 3 4 6
 Graphic Scale

This drawing was prepared by:
 Kaeding & Associates, Inc.
 7300 France Avenue South
 Suite 330
 Minneapolis, MN 55435
 Telephone: (612) 831-0317
 Fax: (612) 831-2179

I HEREBY CERTIFY THAT THIS PLAN, SPECIFICATION, OR REPORT WAS PREPARED BY ME OR UNDER MY DIRECT SUPERVISION AND THAT I AM A DULY REGISTERED PROFESSIONAL ENGINEER UNDER THE LAWS OF THE STATE OF MINNESOTA.
 DATE 06 OCT 95 REG. NO. 9555



1326 ENERGY PARK DRIVE
 ST. PAUL, MINNESOTA 55108
 (612) 644-4389
 5075 WAYZATA BLVD. SUITE 225
 MINNEAPOLIS, MINNESOTA 55441
 (612) 546-0432

REVISIONS	DATE	DESCRIPTION

DESIGNED	PKR
CHECKED	PKR
DRAWN	CPM

CITY OF ELK RIVER
 WASTEWATER TREATMENT FACILITIES
 TRICKLING FILTER PUMP STATION ELECTRICAL PLANS

E4