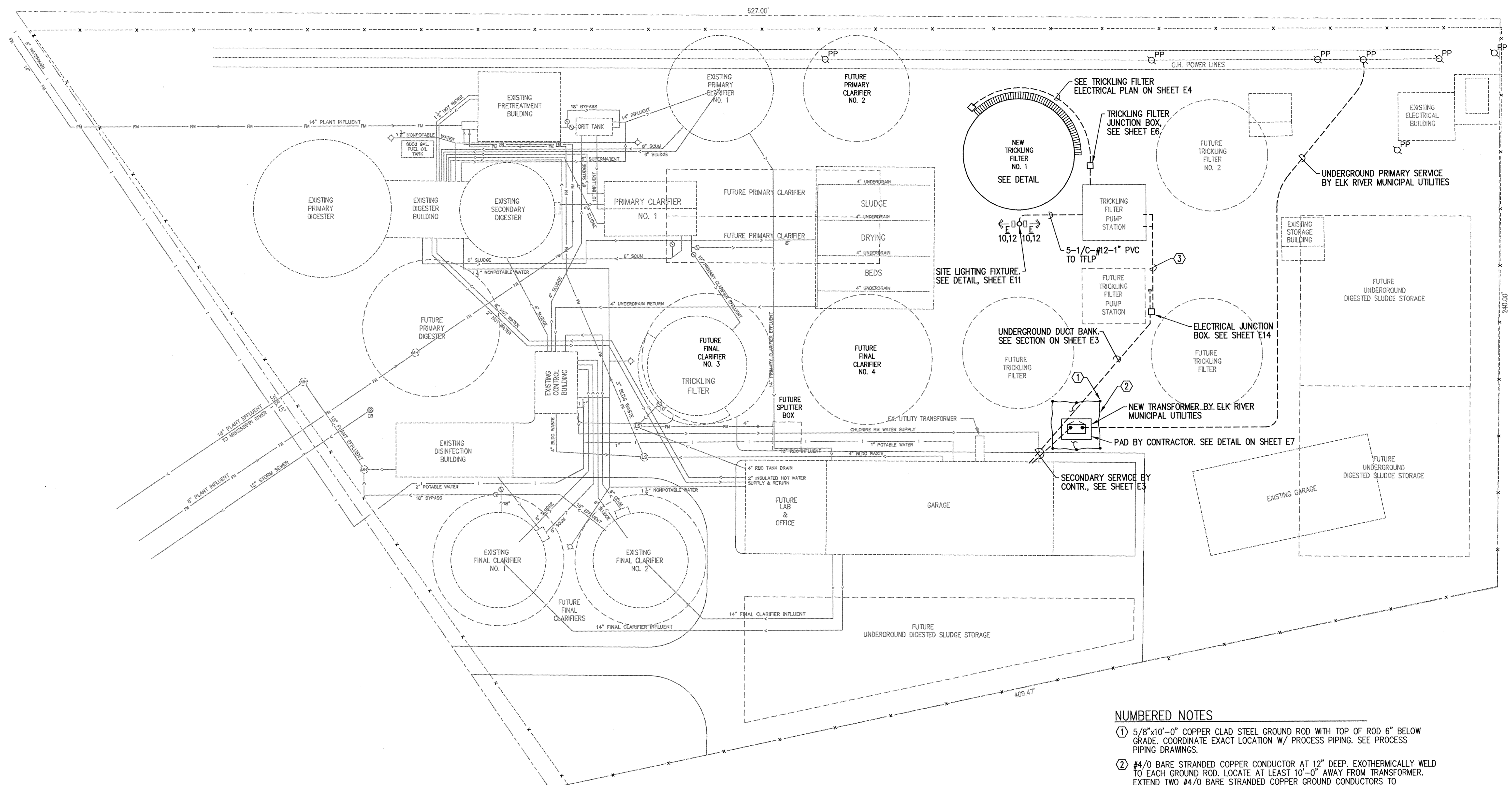
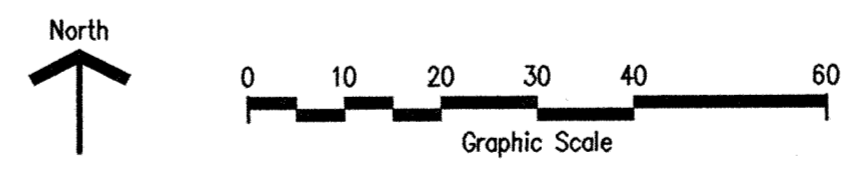


KAI#02361AA--SHEET E2--PS:1=20



ELECTRICAL SITE PLAN
SCALE: 1" = 20'-0"



NUMBERED NOTES

- ① 5/8"x10'-0" COPPER CLAD STEEL GROUND ROD WITH TOP OF ROD 6" BELOW GRADE. COORDINATE EXACT LOCATION W/ PROCESS PIPING. SEE PROCESS PIPING DRAWINGS.
- ② #4/0 BARE STRANDED COPPER CONDUCTOR AT 12" DEEP. EXOTHERMICALLY WELD TO EACH GROUND ROD. LOCATE AT LEAST 10'-0" AWAY FROM TRANSFORMER. EXTEND TWO #4/0 BARE STRANDED COPPER GROUND CONDUCTORS TO TRANSFORMER SECONDARY COMPARTMENT AND CONNECT TO SYSTEM GROUND.
- ③ CIRCUITS "D", "E" & "F" FROM DUCTBANK SECTION & SCHEDULE ON SHEET E3 CONTINUE TO TRICKLING FILTER BUILDING.

This drawing was prepared by:
Kaeding & Associates, Inc.
7300 France Avenue South
Suite 330
Minneapolis, MN 55435
Telephone: (612) 831-0317
Fax: (612) 831-2179

I HEREBY CERTIFY THAT THIS PLAN, SPECIFICATION, OR REPORT WAS PREPARED BY ME OR UNDER MY DIRECT SUPERVISION AND THAT I AM A DULY REGISTERED PROFESSIONAL ENGINEER UNDER THE LAWS OF THE STATE OF MINNESOTA.
[Signature]
DATE: March 1, 1994 REG. NO. 9955



1326 ENERGY PARK DRIVE
ST. PAUL, MINNESOTA 55108
(612) 644-4389

9800 SHELARD PARKWAY
MINNEAPOLIS, MINNESOTA 55441
(612) 546-0432

DATE	DESCRIPTION	DESIGNED	PKF
		CHECKED	PKF
		DRAWN	DTB
		GRAPHIC SCALE	
		0	HORIZ.
		0	VERT.

CITY OF ELK RIVER
WASTEWATER TREATMENT FACILITIES
ELECTRICAL SITE PLAN

DATE DEC 1993 SHEET OF SHEETS PROJECT NO. 230-151

E2

SAFCO PRODUCTS • NEW HOPK, MINNESOTA
 REPRODUCED BY PART NUMBER 8882
 SAFCO PRODUCTS • NEW HOPK, MINNESOTA
 REPRODUCED BY PART NUMBER 8882
 SAFCO PRODUCTS • NEW HOPK, MINNESOTA
 REPRODUCED BY PART NUMBER 8882