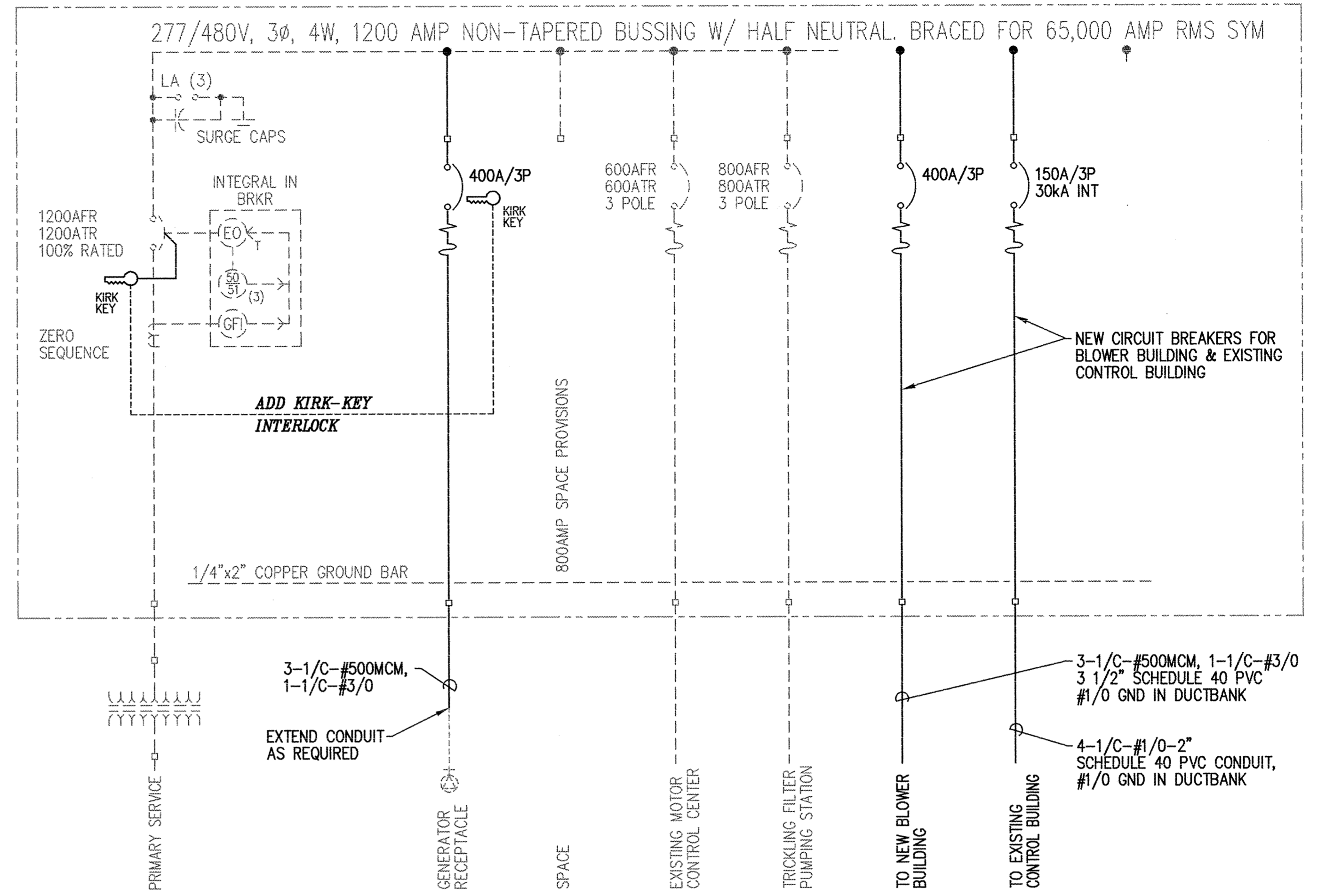


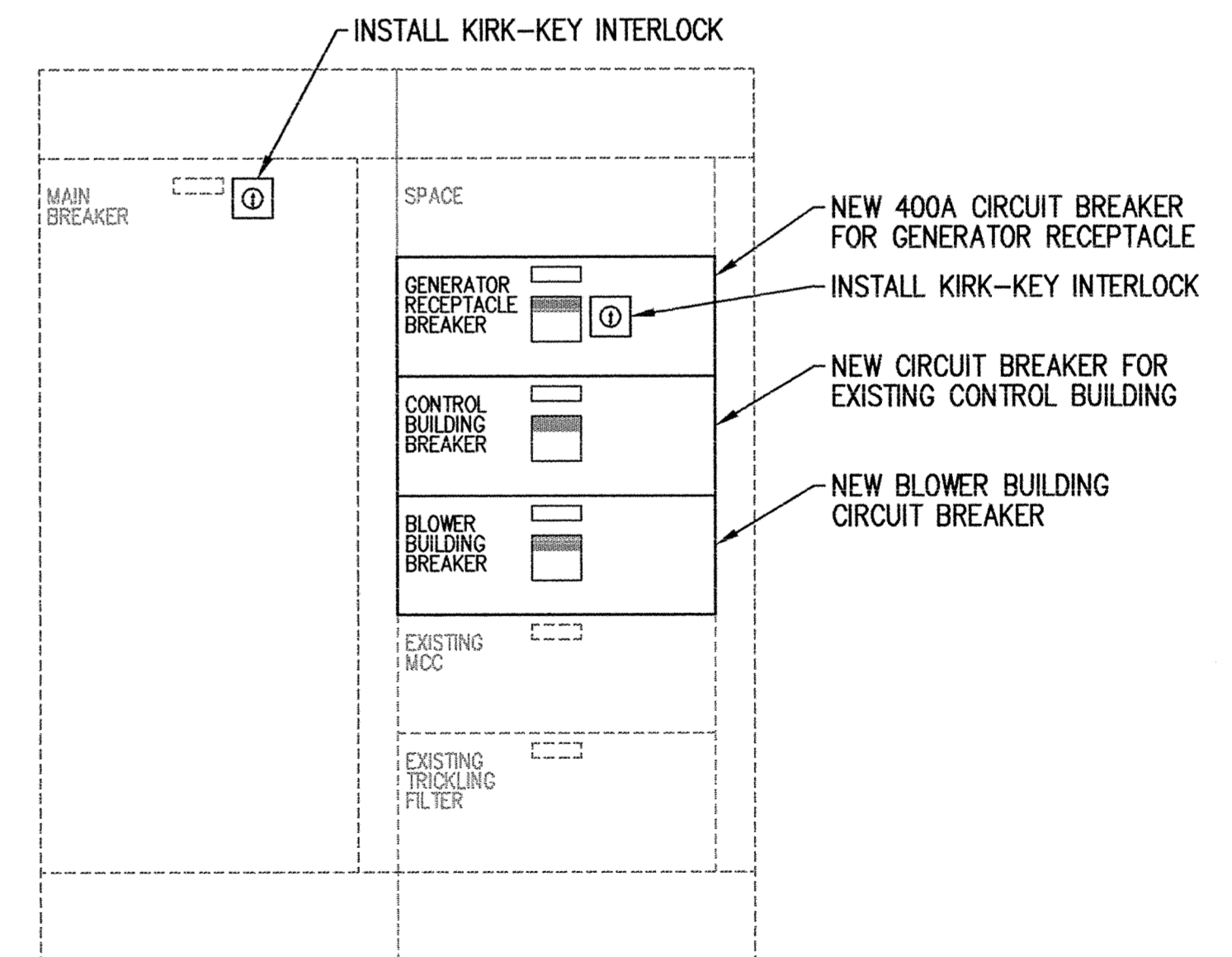
FUME HOOD SCHEMATIC
NO SCALE



EXISTING 480V SWITCHGEAR ONE-LINE DIAGRAM
NO SCALE

EXISTING SWITCHGEAR SPECIFICATIONS

MANUFACTURER: WESTINGHOUSE BULLETIN 2100
 VOLTAGE: 480 VAC, 3 PHASE, 4 WIRE, 60 HERTZ
 BUSSING: 1200 AMP, COPPER HORIZONTAL BUS
 300 AMP, TIN-PLATED COPPER VERTICAL BUS
 NEUTRAL PLATE
 HORIZONTAL COPPER GROUND BUS
 INTERRUPTING CAPACITY: 65,000 AIC
 ENCLOSURE: NEMA 1
 UL SERVICE ENTRANCE LABELED



EXISTING 480V SWITCHGEAR ELEVATION
SCALE: 3/4"=1'-0"

This drawing was prepared by:
 Kading & Associates, Inc.
 7300 France Avenue South
 Suite 330
 Minneapolis, MN 55435
 Telephone: (612) 831-0317
 Fax: (612) 831-2179

I HEREBY CERTIFY THAT THIS PLAN, SPECIFICATION, OR REPORT WAS PREPARED BY ME OR UNDER MY DIRECT SUPERVISION, AND THAT I AM A DULY REGISTERED PROFESSIONAL ENGINEER UNDER THE LAWS OF THE STATE OF MINNESOTA.
 DATE 08 OCT 95 REG. NO. 9955



1326 ENERGY PARK DRIVE
 ST. PAUL, MINNESOTA 55108
 (612) 644-4389
 5075 WAYZATA BLVD, SUITE 225
 MINNEAPOLIS, MINNESOTA 55441
 (612) 546-0432

DATE	DESCRIPTION	DESIGNED PFK
		CHECKED PFK
		DRAWN TLH/CPM
		GRAPHIC SCALE
		0 HORIZ.
		0 VERT.

CITY OF ELK RIVER
 WASTEWATER TREATMENT FACILITIES
 ELECTRICAL SCHEMATIC & DETAILS

E12

DATE OCT 1995 SHEET 98 OF 112 SHEETS PROJECT NO. 230-151