

SECTION

**TRANSFORMER PAD DETAIL**  
SCALE: 3/4"=APPROXIMATELY 1'-0"

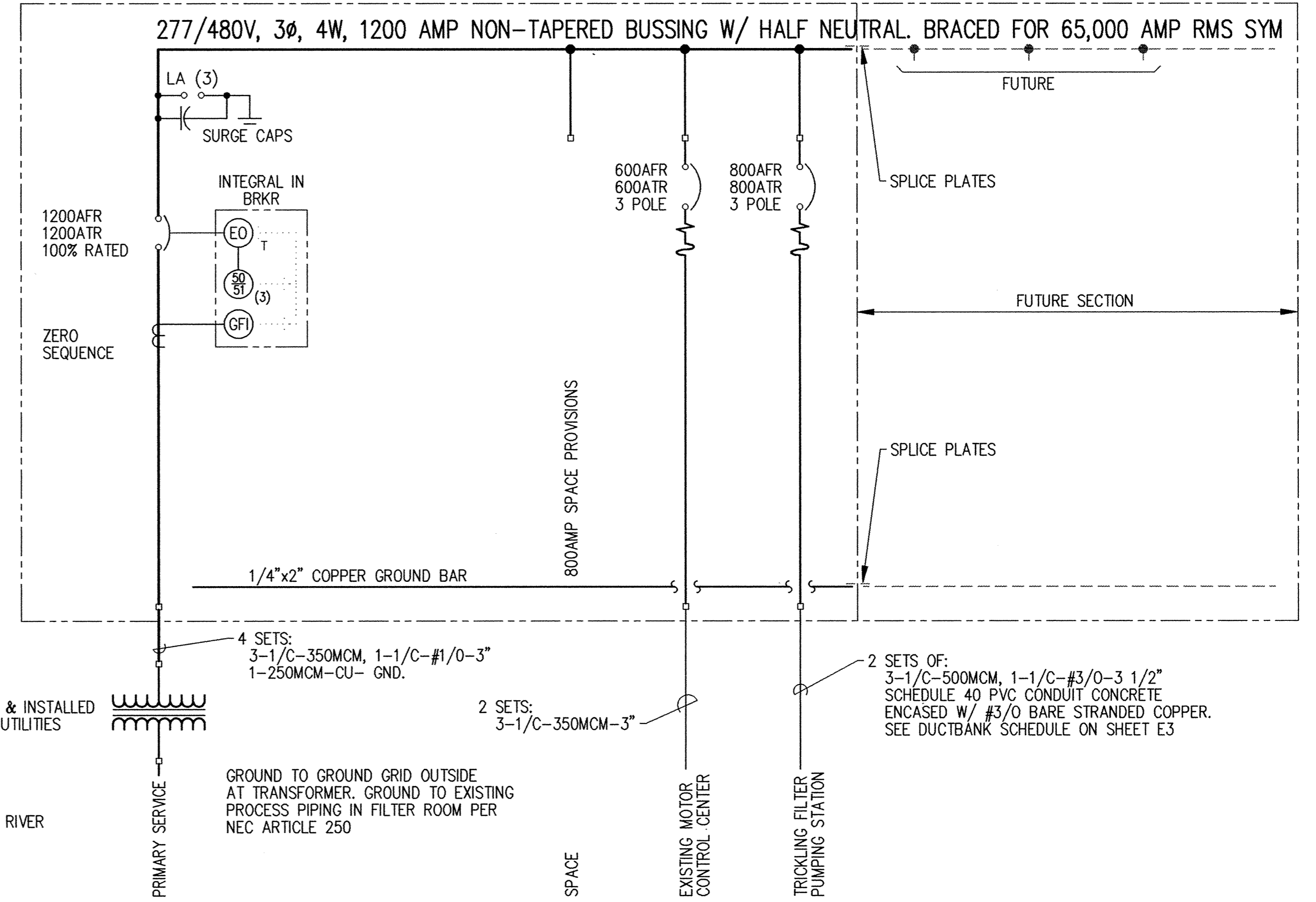
- TRANSFORMER PAD NOTES**
1. CONFIRM DIMENSIONS W/ OWNER PRIOR TO CONSTRUCTION
  2. CONCRETE SHALL HAVE A 28-DAY STRENGTH OF 4000PSI W/ 4-6% AIR ENTRAINMENT & 3/4" (MAXIMUM) AGGREGATE SIZE
  3. REINFORCING STEEL SHALL BE ASTM-A615, GRADE 60, EQUALLY SPACED AS SHOWN EACH WAY
  4. MINIMUM CONCRETE COVER OVER REINFORCING STEEL SHALL BE 2", UNLESS NOTED OTHERWISE
  5. FINISH TO BE A WOOD FLOAT CONCRETE FINISH W/ NO DEPRESSIONS

NOTE: SWITCHGEAR SHALL BE LABELED AS SUITABLE FOR SERVICE ENTRANCE EQUIPMENT

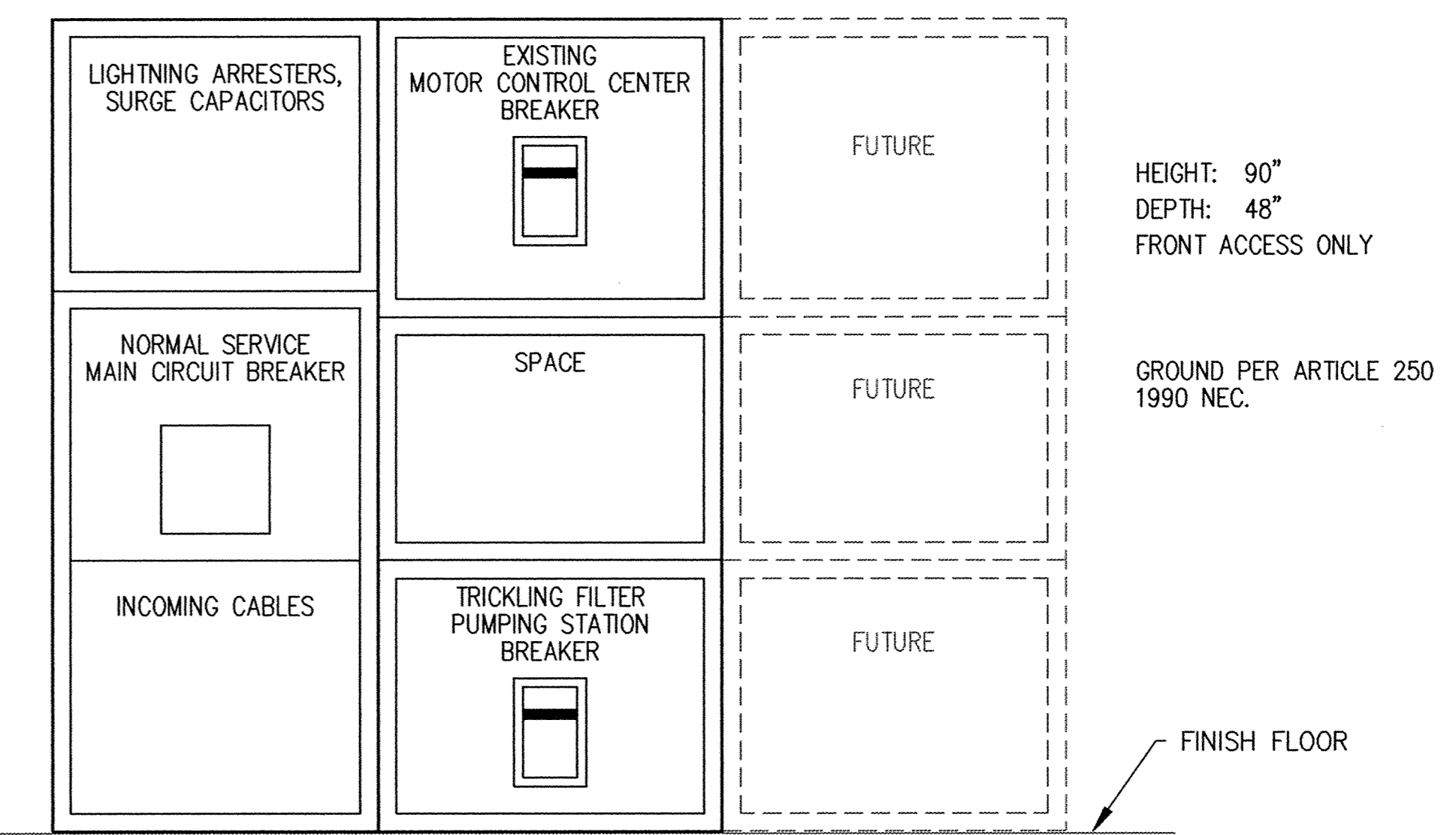
TRANSFORMER FURNISHED & INSTALLED BY ELK RIVER MUNICIPAL UTILITIES

PRIMARY SERVICE BY ELK RIVER MUNICIPAL UTILITIES

UTILITY METERING IS IN TRANSFORMER SECONDARY COMPARTMENT



**480V SWITCHGEAR ONE-LINE DIAGRAM**  
NO SCALE



**480V SWITCHGEAR ELEVATION**  
SCALE: 3/4"=1'-0"

This drawing was prepared by:  
**Kaeding & Associates, Inc.**  
7300 France Avenue South  
Suite 330  
Minneapolis, MN 55435  
Telephone: (612) 831-0317  
Fax: (612) 831-2179

I HEREBY CERTIFY THAT THIS PLAN, SPECIFICATION, OR REPORT WAS PREPARED BY ME OR UNDER MY DIRECT SUPERVISION AND THAT I AM A DULY REGISTERED PROFESSIONAL ENGINEER UNDER THE LAWS OF THE STATE OF MINNESOTA.  
*[Signature]*  
DATE: MARCH 1, 1999 REG. NO. 9955



1326 ENERGY PARK DRIVE  
ST. PAUL, MINNESOTA 55108  
(612) 644-4389  
  
9800 SHELARD PARKWAY  
MINNEAPOLIS, MINNESOTA 55441  
(612) 546-0432

REVISIONS	DATE	DESCRIPTION

DESIGNED PFK  
CHECKED PFK  
DRAWN DTB  
  
GRAPHIC SCALE  
0 HORIZ.  
0 VERT.

**CITY OF ELK RIVER**  
WASTEWATER TREATMENT FACILITIES  
ELECTRICAL SCHEMATIC & DETAILS

**E7**