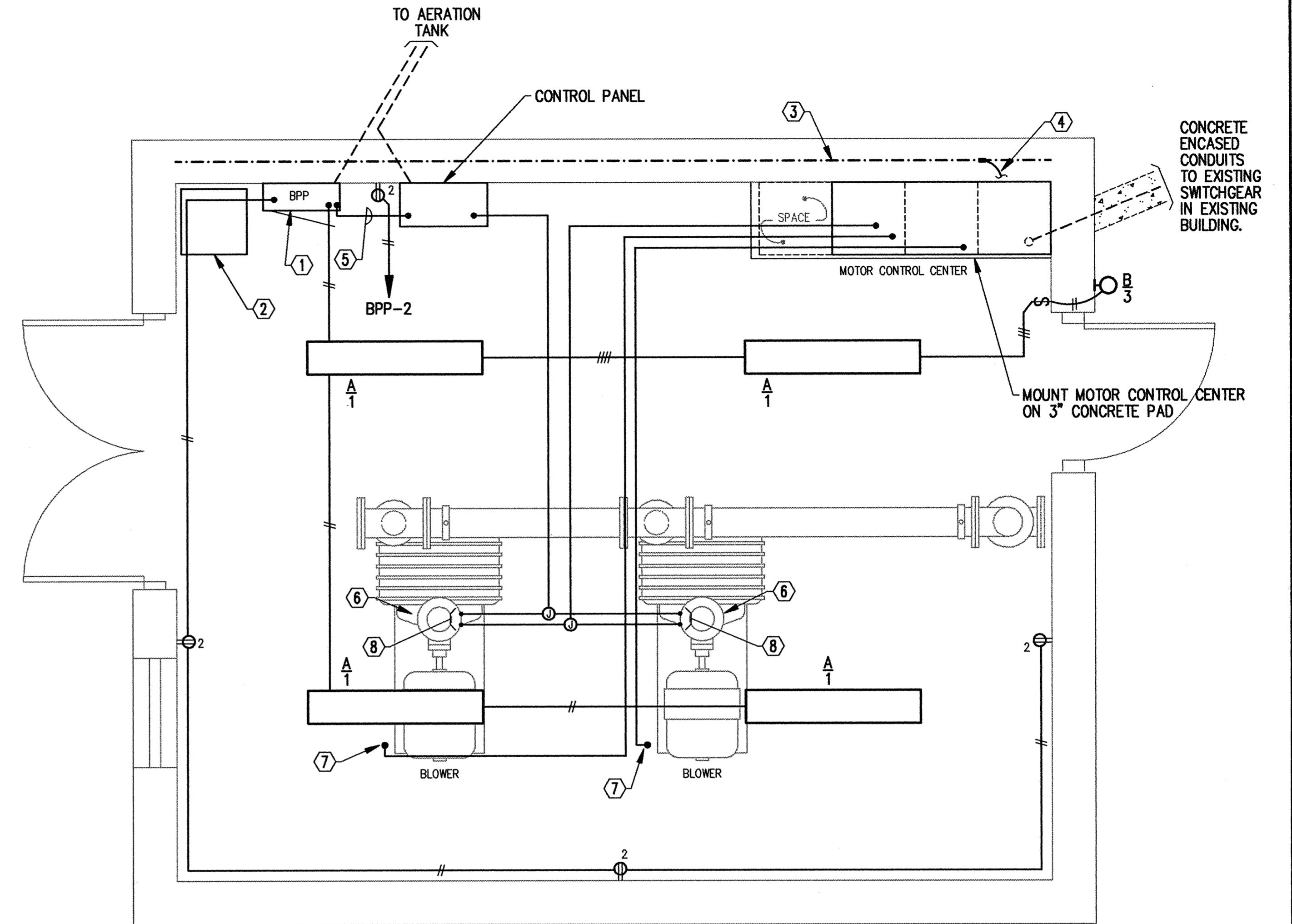
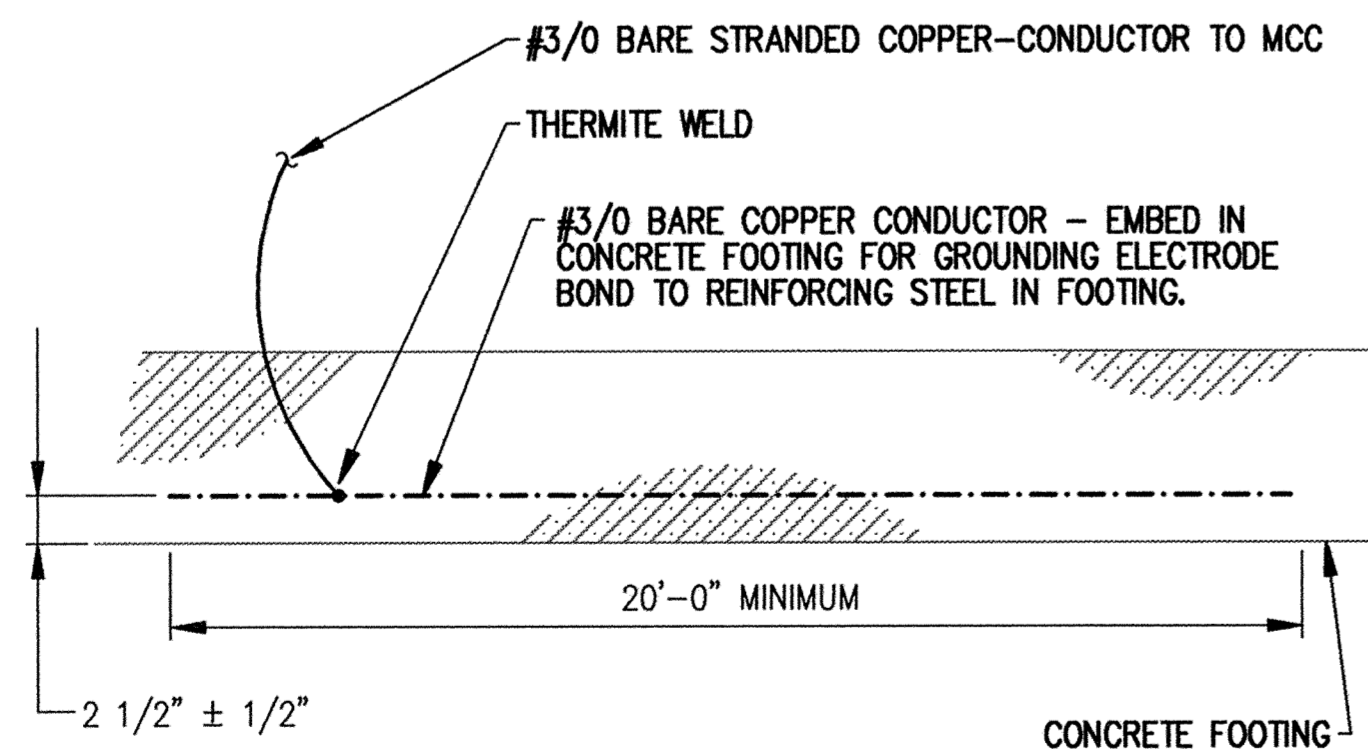
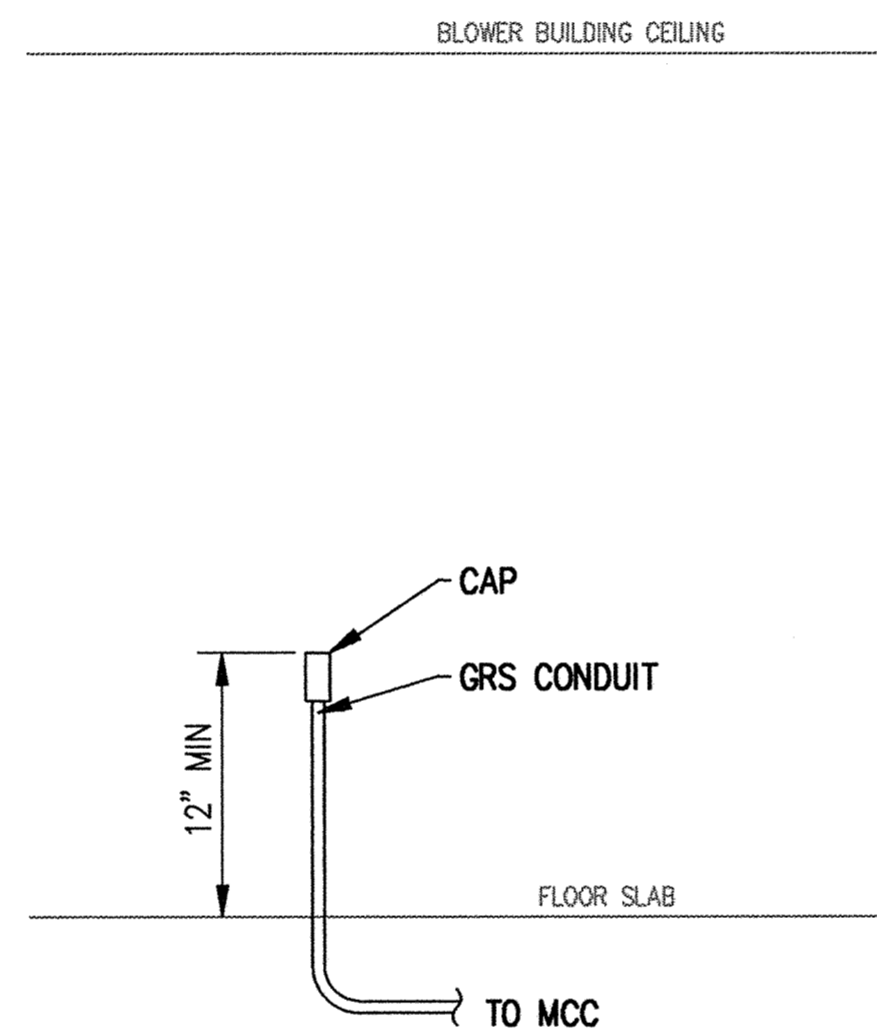
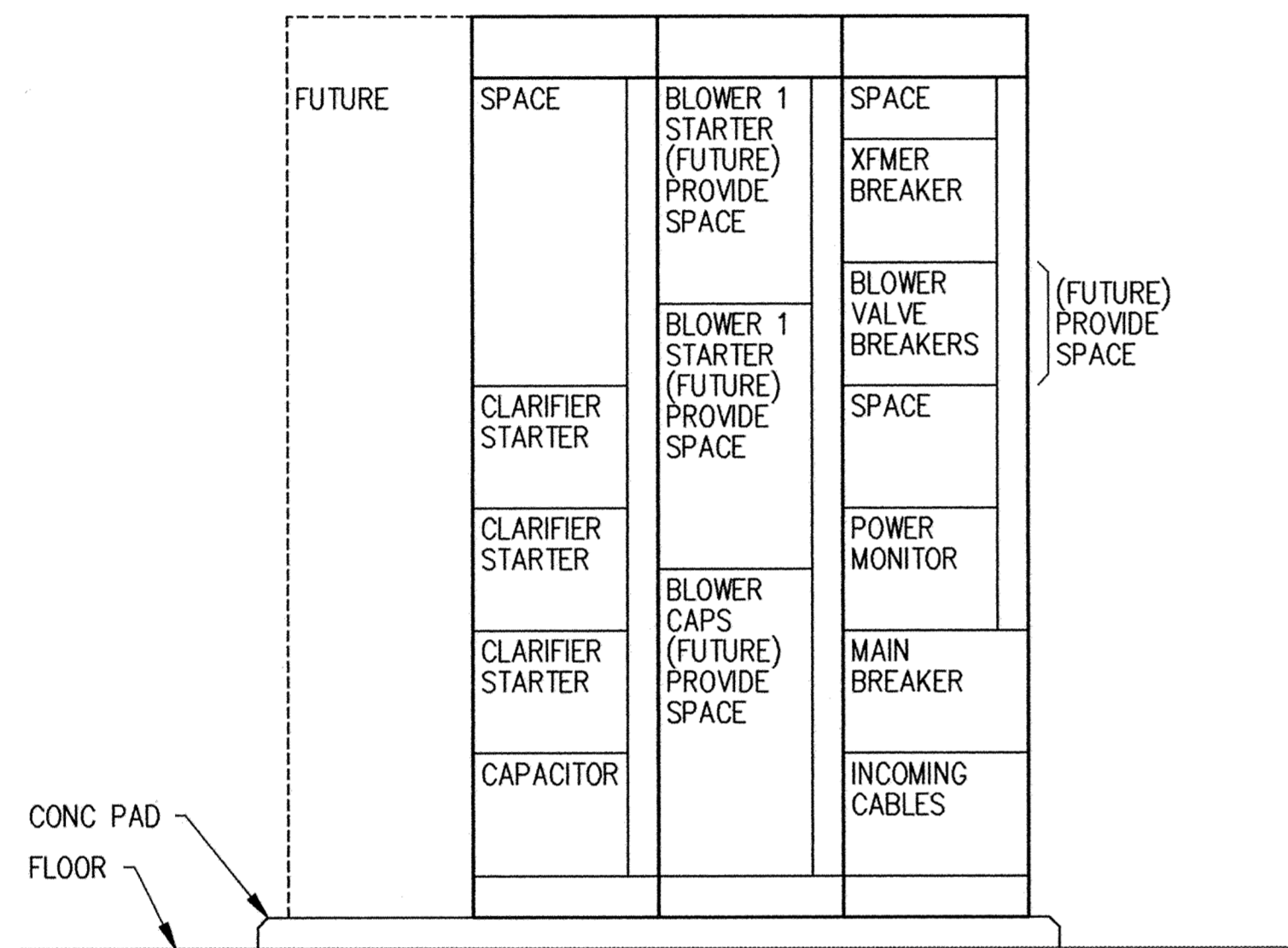


| BLOWER BUILDING POWER PANEL, BPP | | | | | | | | | |
|----------------------------------|-------------|---------|------------------------|-------|------|--|-------|---|--|
| MOUNTING | LOCATION | SERVICE | | | | REMARKS | | | |
| | | AMPS | VOLTS | PHASE | WIRE | | | | |
| SURFACE | BLOWER BLDG | 100 | 120/208 | 3 | 4 | 50A MAIN BREAKER GROUND PER ARTICLE 250, 1993 NEC | | | |
| CIRCUIT DESCRIPTION | BKR | CKT | ANTICIPATED LOAD IN VA | | | CKT | BKR | CIRCUIT DESCRIPTION | |
| | | | A | B | C | | | | |
| LIGHTS | 20A1P | 1 | 500 | | | 2 | 20A1P | OUTLETS | |
| EXTERIOR LIGHT | 20A1P | 3 | 100 | | | 4 | 15A1P | BLOWER #1 SURGE PANEL (FUTURE CONNECTION) | |
| CONTROL PANEL | 20A1P | 5 | 200 | | | 6 | 15A1P | BLOWER #2 SURGE PANEL (FUTURE CONNECTION) | |
| CLARIFIER OUTLETS | 20A1P | 7 | 500 | | | 8 | 20A1P | OUTLET AT AERATION TANK | |
| SPACE | | 9 | | | | 10 | 20A1P | SPARE | |
| | | 11 | | | | 12 | 20A1P | SPARE | |
| | | 13 | | | | 14 | | SPACE | |
| | | 15 | | | | 16 | | | |
| | | 17 | | | | 18 | | | |
| | | 19 | | | | 20 | | | |
| | | 21 | | | | 22 | | | |
| | | 23 | | | | 24 | | | |



NUMBERED NOTES

- (1) POWER PANEL, BPP. SEE SCHEDULE. GROUND PER ARTICLE 250, N.E.C.
- (2) TRANSFORMER FOR POWER PANEL, BPP. 480:120/208V, 3ø, 4W, 15kVA. SEE SHEET E9.
- (3) UFER TYPE GROUND ELECTRODE IN BUILDING FOOTING. SEE DETAIL
- (4) GROUNDING ELECTRODE TO MCC GROUND. SEE UFER ELECTRODE DETAIL
- (5) 2-1/C-#12-1/2" FROM CONTROL PANEL TO BPP
- (6) FUTURE ELECTRIC BUTTERFLY VALVE.
- (7) FUTURE BLOWER, STUB CONDUIT 12" ABOVE SLAB. TYPICAL.
- (8) 1/2" FROM FUTURE VALVE OPERATOR TO MOTOR CONTROL CENTER. (POWER)
1/2" FROM FUTURE VALVE OPERATOR TO CONTROL PANEL. TYPICAL. (SIGNAL)

This drawing was prepared by:
Koeding & Associates, Inc.
7300 France Avenue South
Suite 330
Minneapolis, MN 55435
Telephone: (612) 831-0317
Fax: (612) 831-2779

I HEREBY CERTIFY THAT THIS PLAN, SPECIFICATION, OR REPORT WAS PREPARED BY ME OR UNDER MY DIRECT SUPERVISION AND THAT I AM A DULY REGISTERED PROFESSIONAL ENGINEER UNDER THE LAWS OF THE STATE OF MINNESOTA.
[Signature]
DATE 08 OCT 95 REG. NO. 9955



1326 ENERGY PARK DRIVE
ST. PAUL, MINNESOTA 55108
(612) 644-4389
5075 WAYZATA BLVD. SUITE 225
MINNEAPOLIS, MINNESOTA 55441
(612) 546-0432

| DATE | DESCRIPTION | DESIGNED | PKF |
|------|-------------|---------------|---------|
| | | CHECKED | PKF |
| | | DRAWN | JGB/TLH |
| | | GRAPHIC SCALE | |
| | | 0 HORIZ. | |
| | | 0 VERT. | |

CITY OF ELK RIVER
WASTEWATER TREATMENT FACILITIES
BLOWER BUILDING ELECTRICAL PLAN

E18

DATE OCT 1995 SHEET 104 OF 112 SHEETS PROJECT NO. 230-151