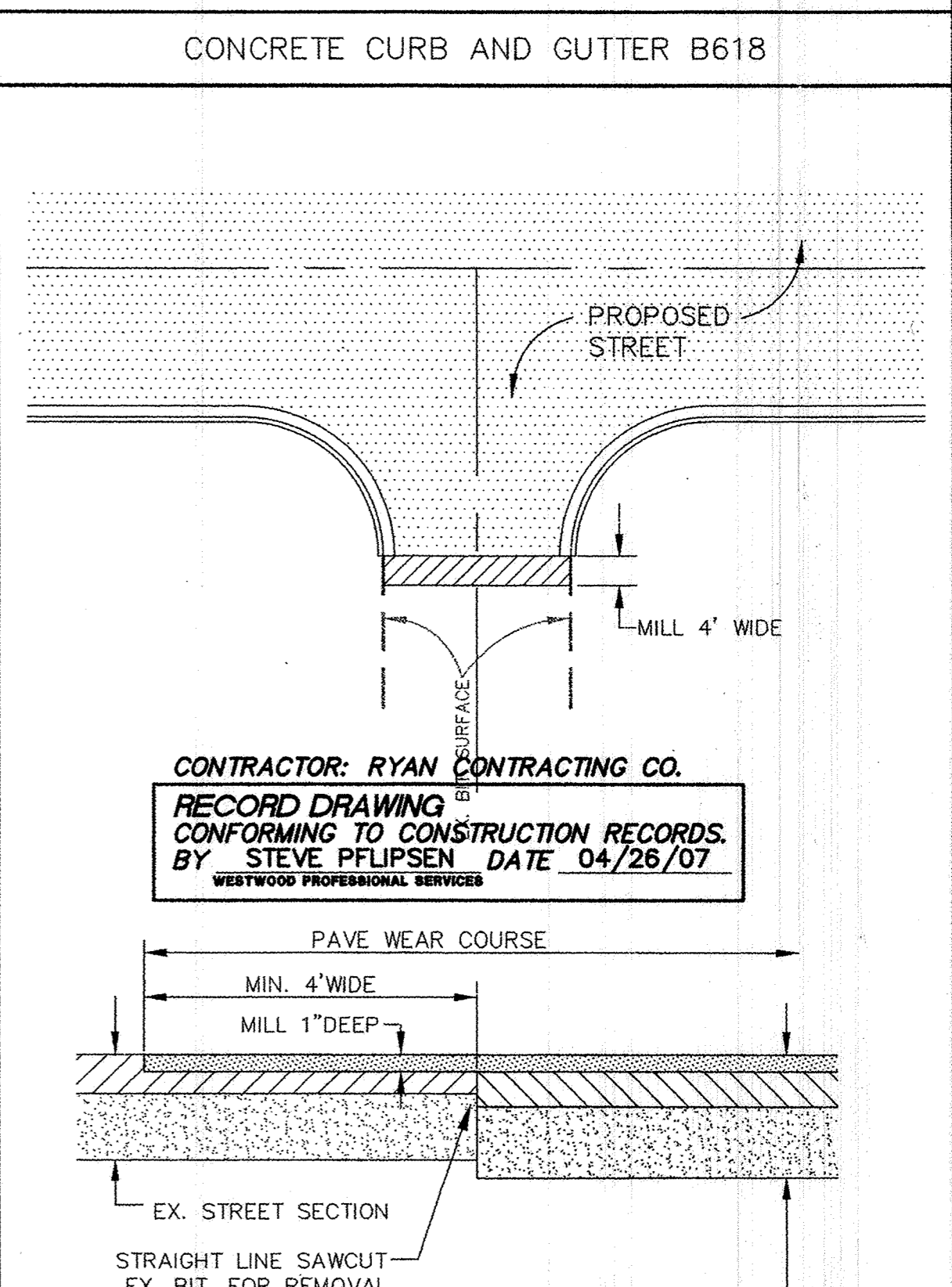
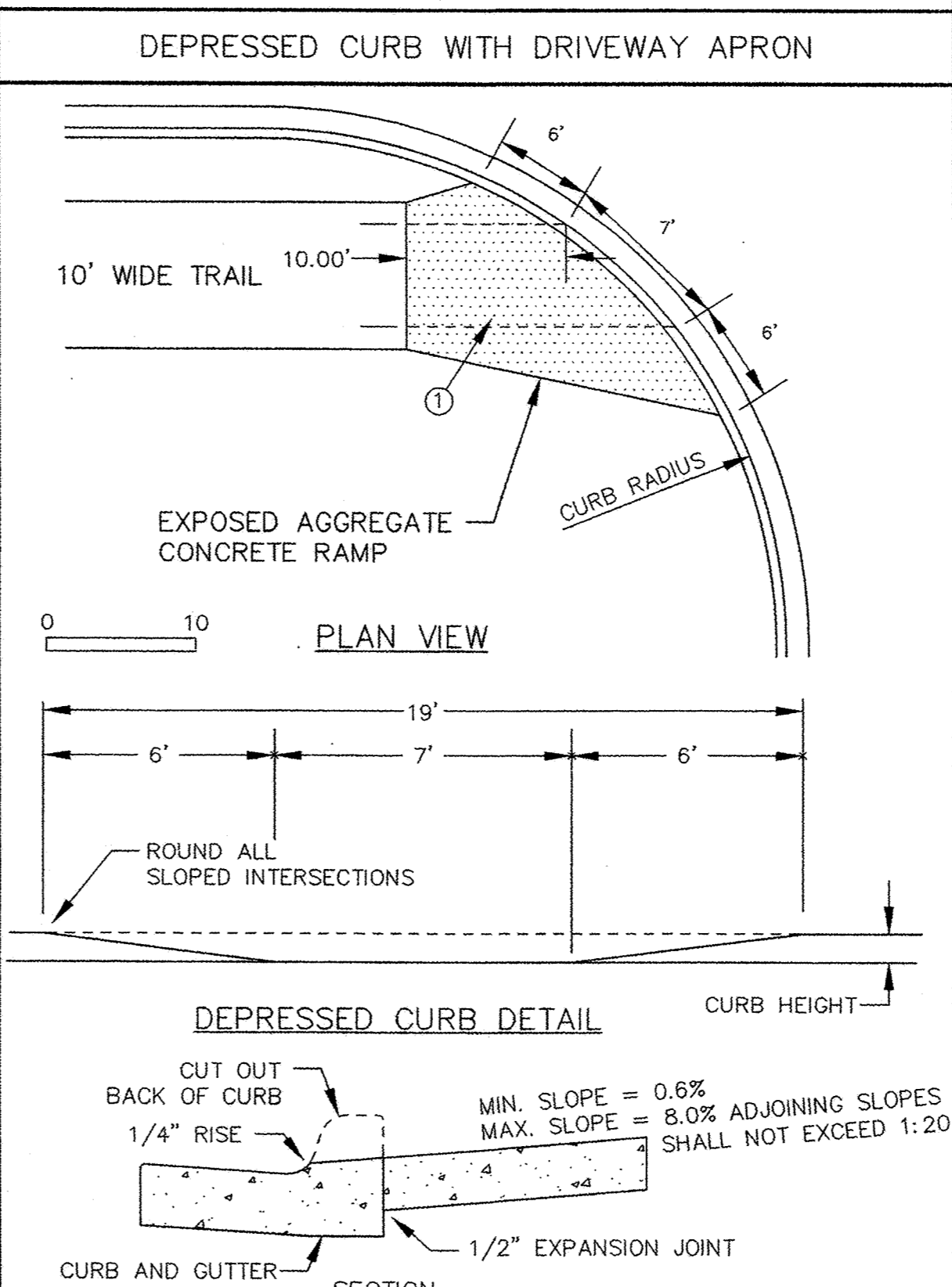
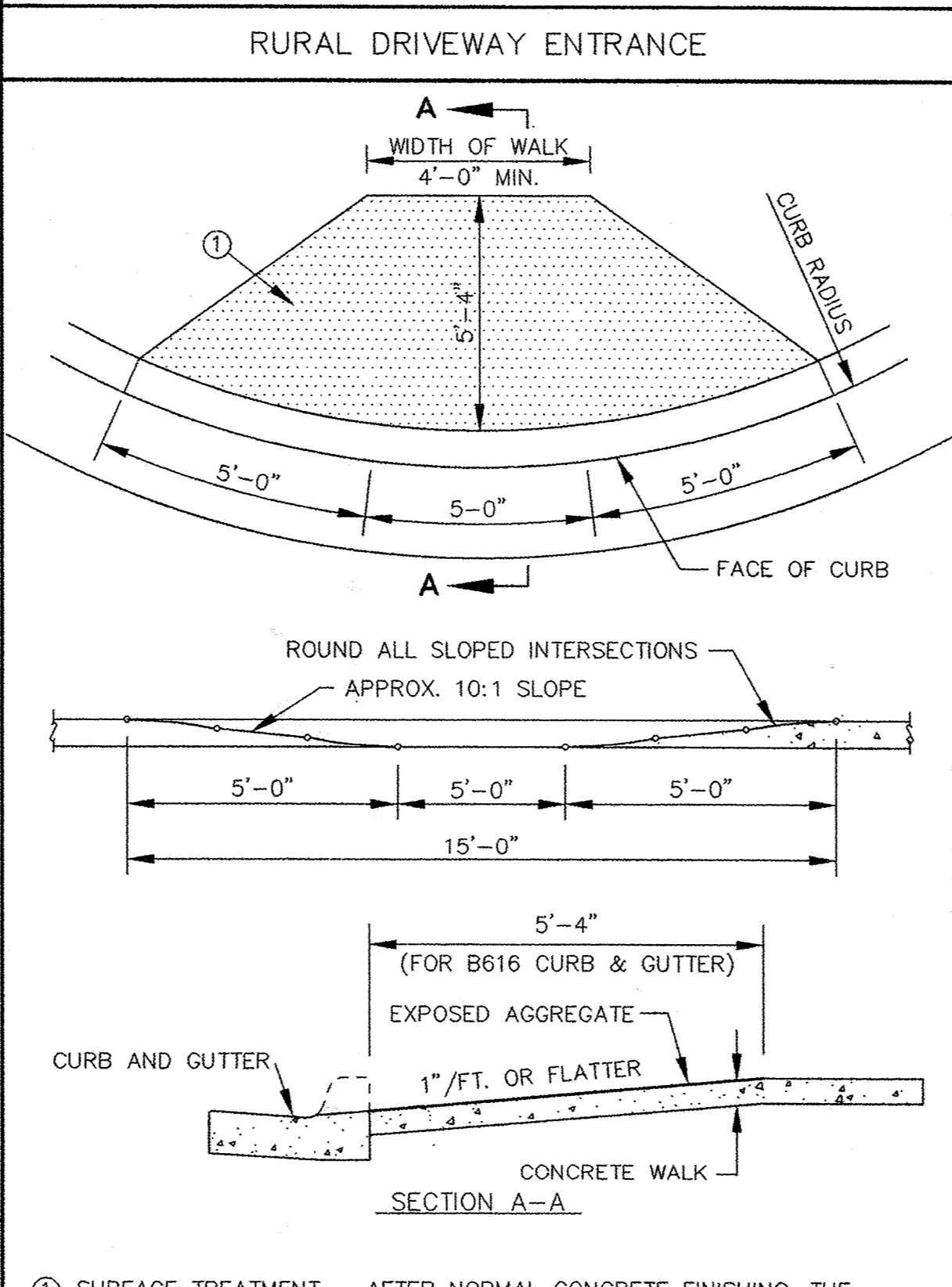
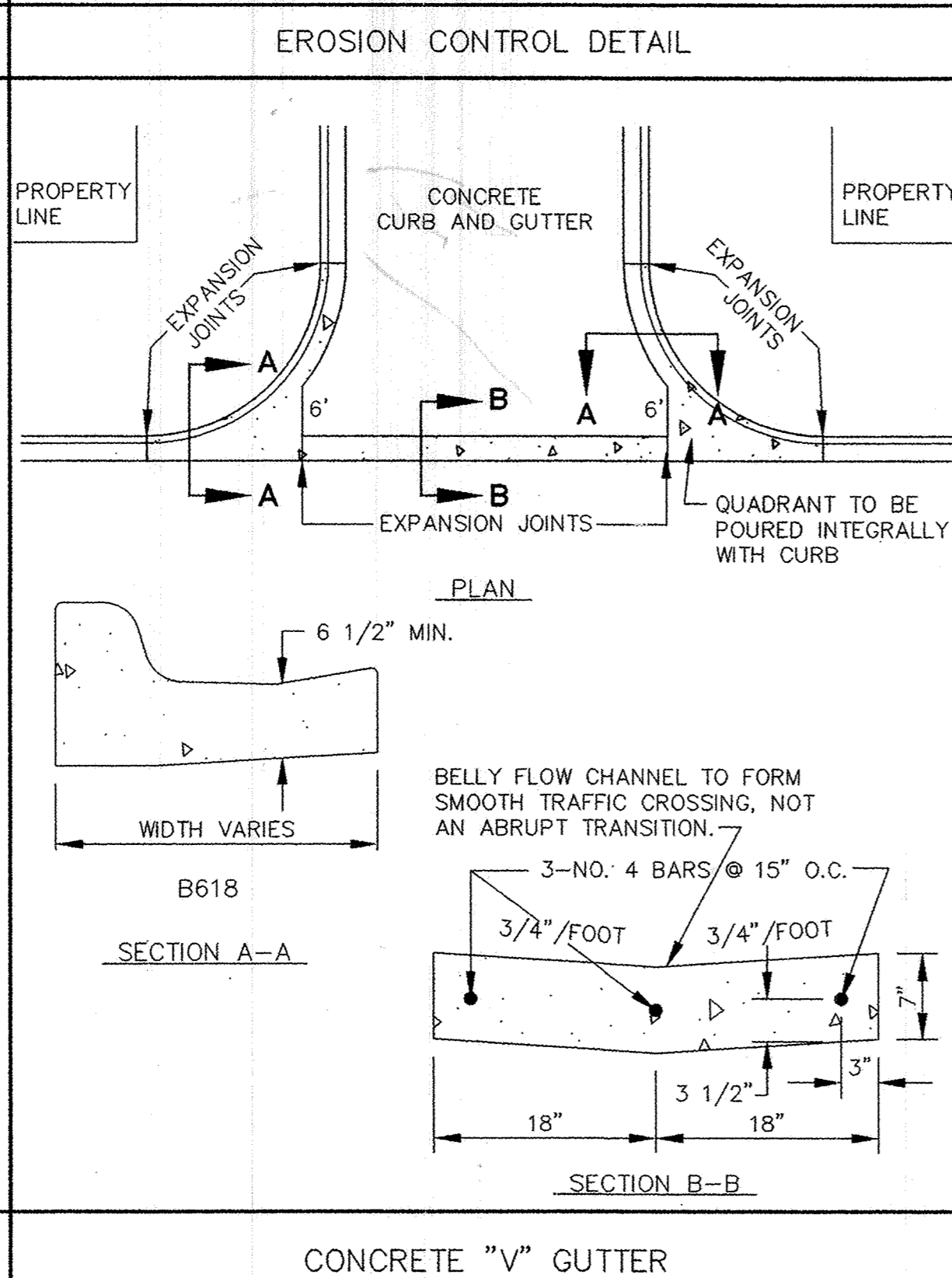
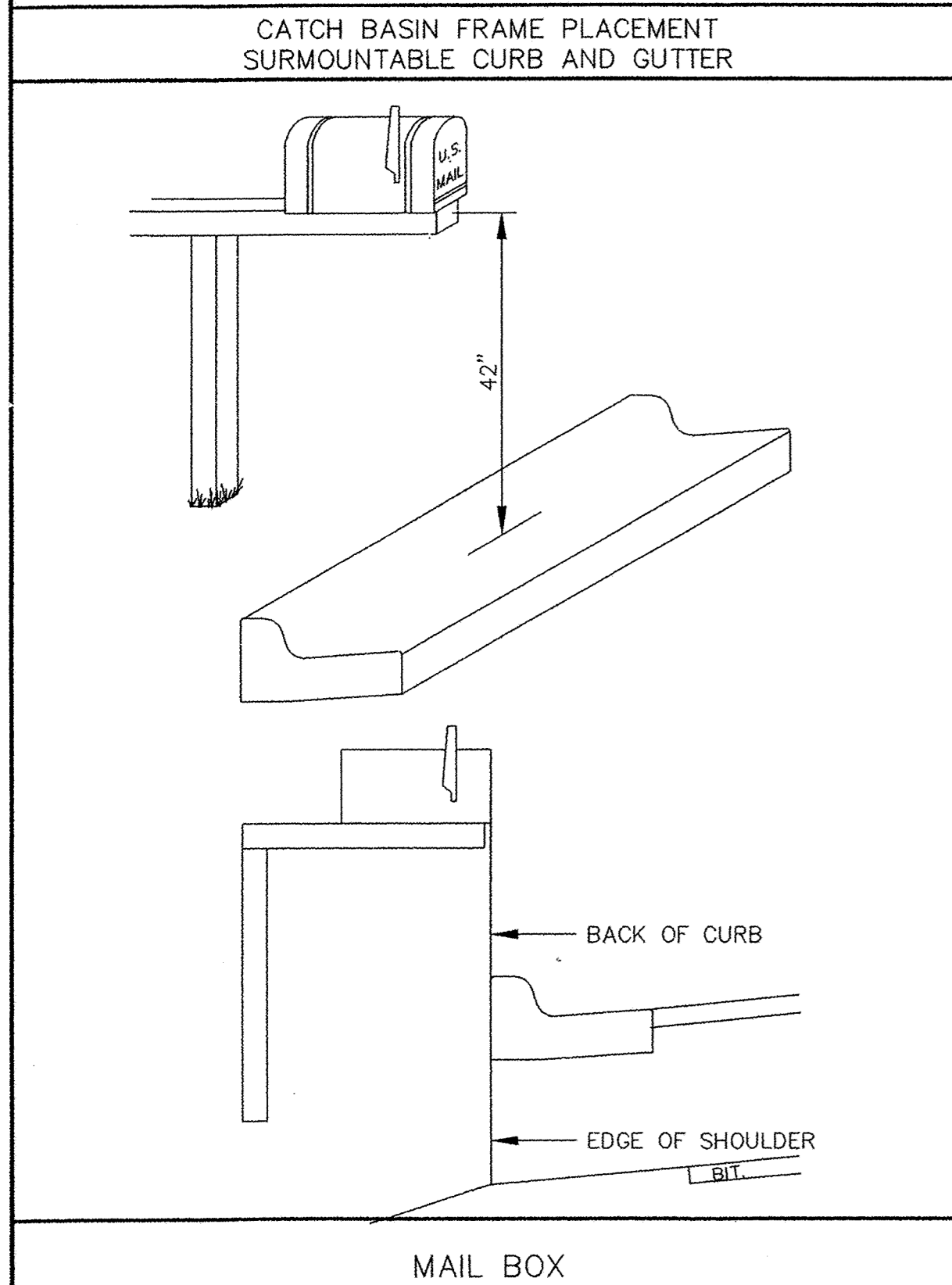
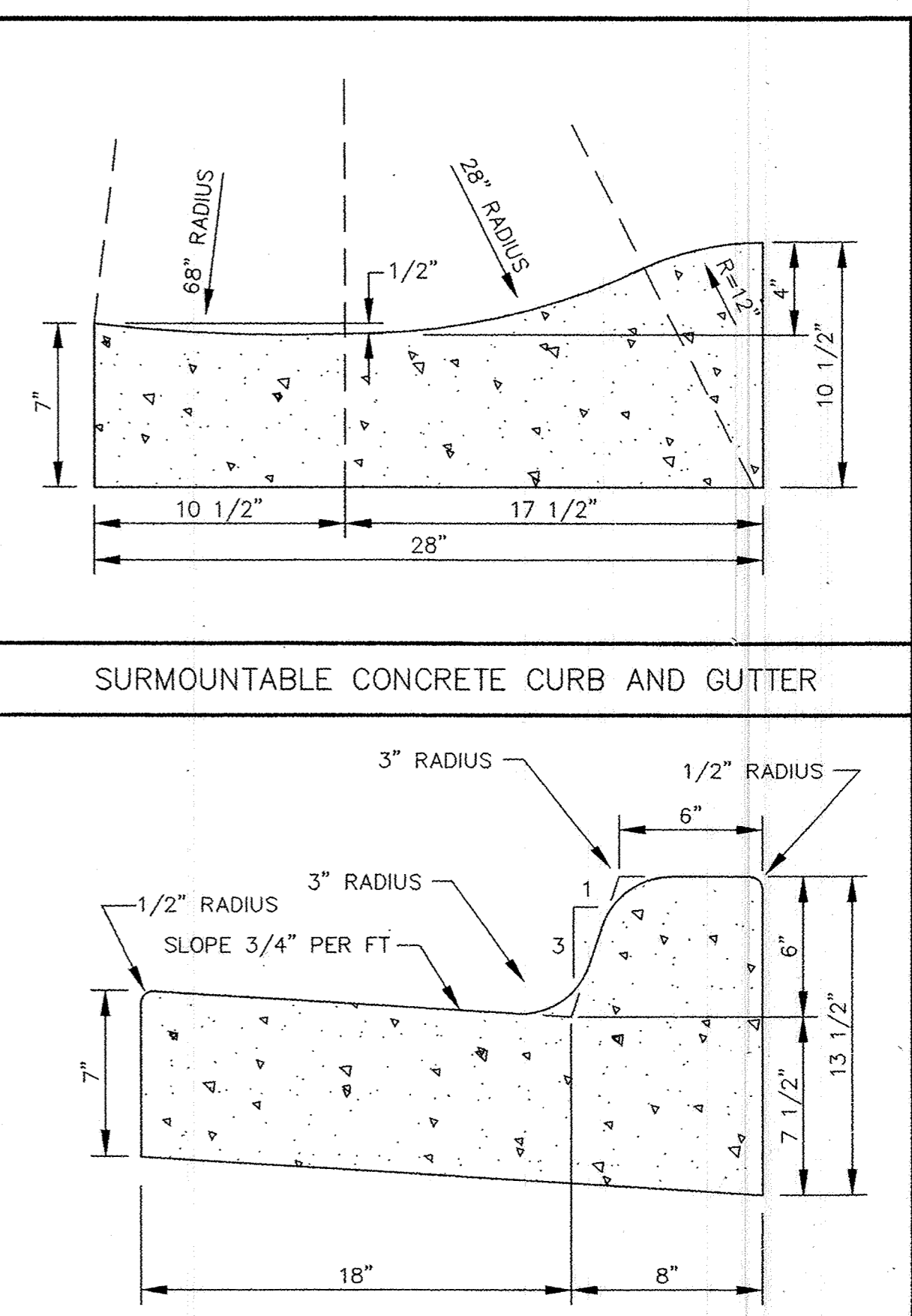
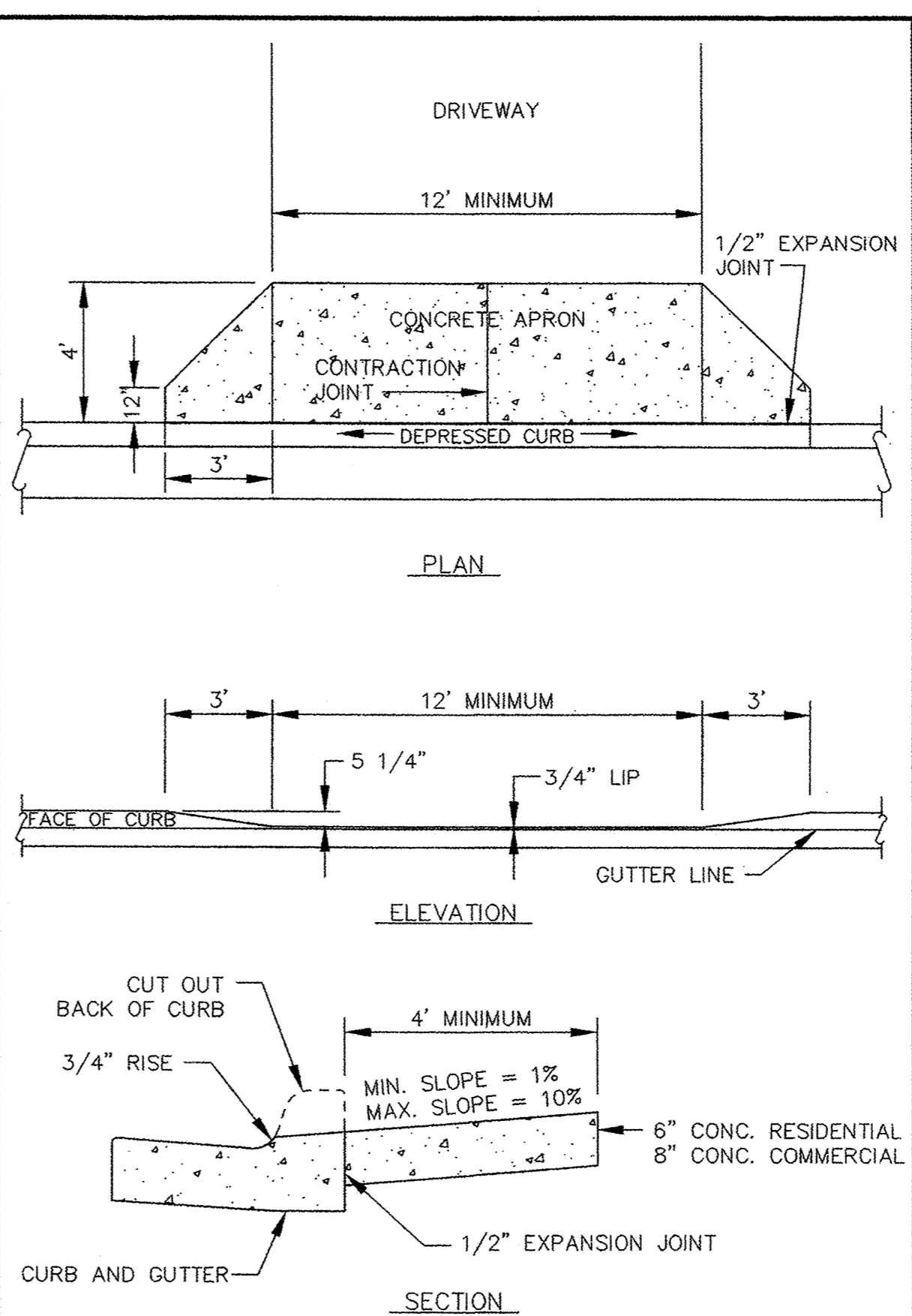
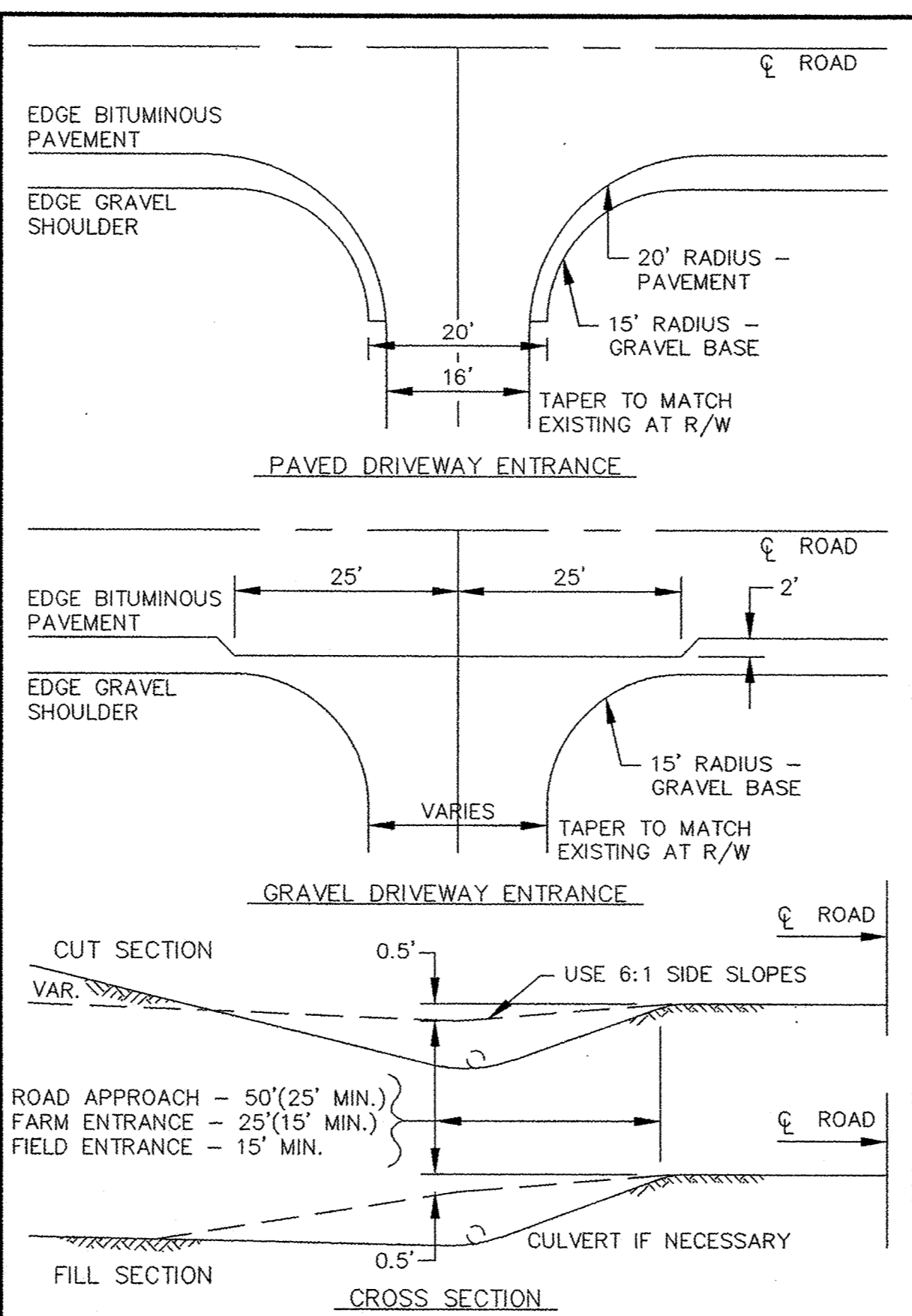
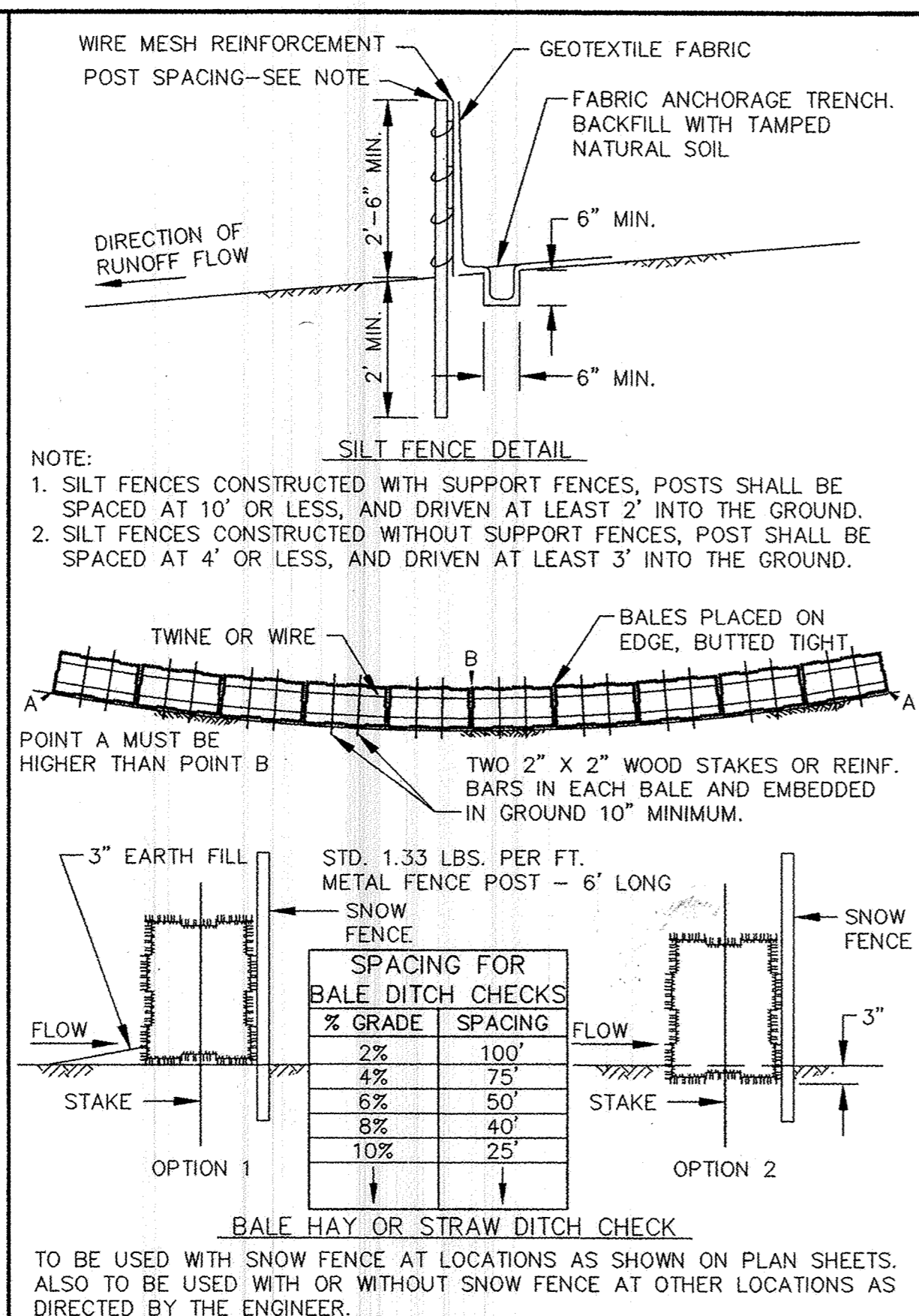
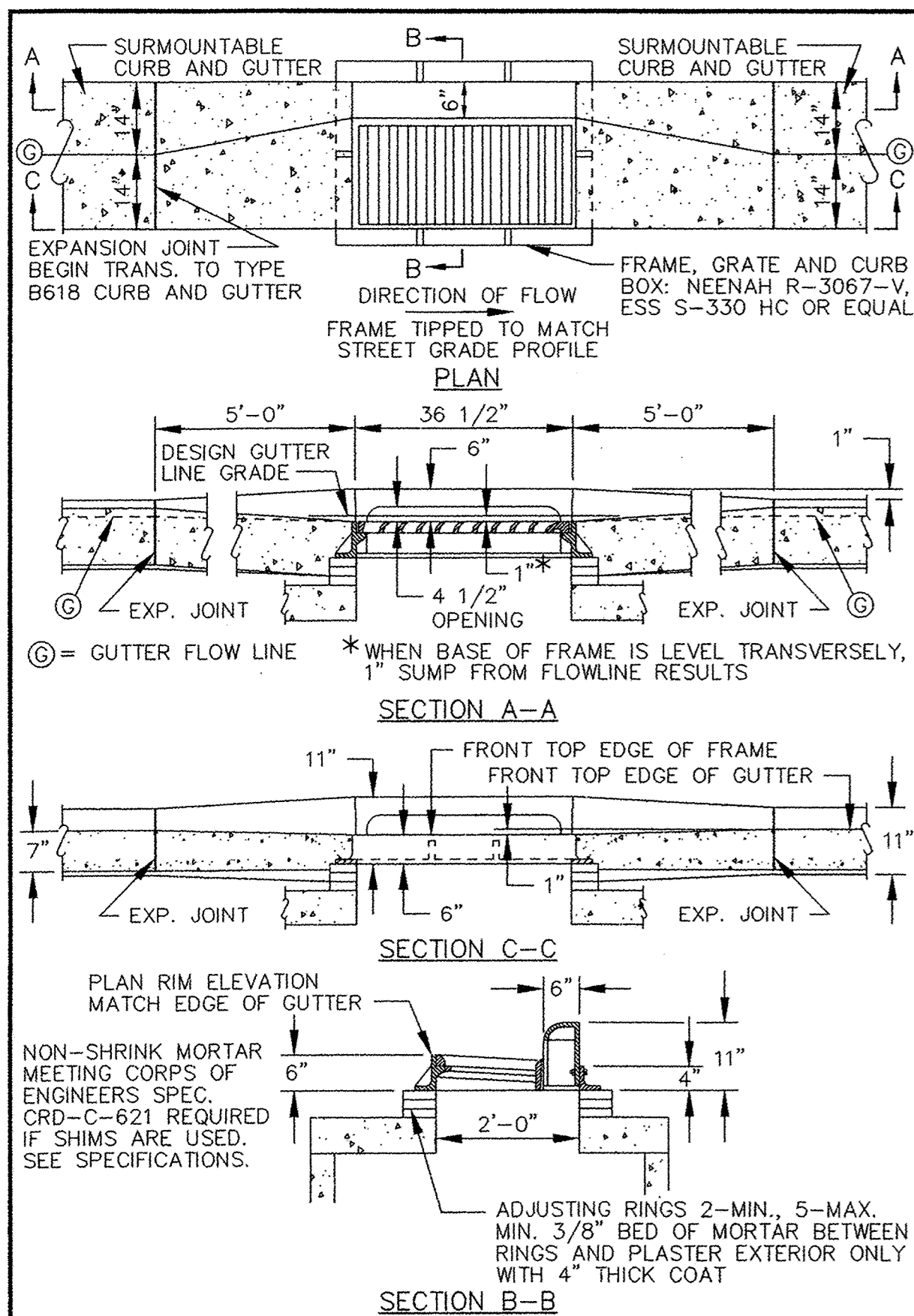


P:\20021059\dwg\RECORD\20021059DEB4.dwg 1/15/2007 9:06:00 AM CST



Westwood Professional Services, Inc.
 7599 Anagram Drive
 Eden Prairie, MN 55344
 Phone: 952/937-5150 Fax: 952/937-5822

DESIGNED BY: --- DRAWN BY: ---
 APPROVED: --- JOB NUMBER ---
 CAD DATE: April 14, 1999 11:17:32 a.m.
 CAD FILE: 230000m\ER-ST.DWG

I HEREBY CERTIFY THAT THIS PLAN, SPECIFICATION, OR REPORT WAS PREPARED BY ME OR UNDER MY DIRECT SUPERVISION AND THAT I AM A DULY REGISTERED PROFESSIONAL ENGINEER UNDER THE LAWS OF THE STATE OF MINNESOTA.

DATE: _____ REG. NO. _____

PREPARED FOR:
Van Den Berg Property
 10811 181st Avenue Northwest
 Elk River, Minnesota 55330

NO.	DATE	BY	REVISION DESCRIPTION
1	03/20/06	DDB	CLIENT COMMENTS
2	10/20/06	GKB	RECORD DRAWINGS
3	01/15/07	SWW	RECORD DRAWINGS
4	04/26/07	SWW	FINAL RECORD DRAWINGS

Howard R. Green Company
 CONSULTING ENGINEERS

1326 ENERGY PARK DRIVE
 ST. PAUL, MINNESOTA 55108
 (612) 644-4389

CITY OF ELK RIVER
VAN DEN BERG PROPERTY
STREET CONSTRUCTION DETAILS

SHEET NO.
8
 OF
8

E-3 20021059DEB4.DWG

30 PRODUCTS • NEW HOPE, MINNESOTA
 REPORTS BY PART NUMBER 8328
 30 PRODUCTS • NEW HOPE, MINNESOTA
 REPORTS BY PART NUMBER 8328
 30 PRODUCTS • NEW HOPE, MINNESOTA
 REPORTS BY PART NUMBER 8328
 30 PRODUCTS • NEW HOPE, MINNESOTA
 REPORTS BY PART NUMBER 8328