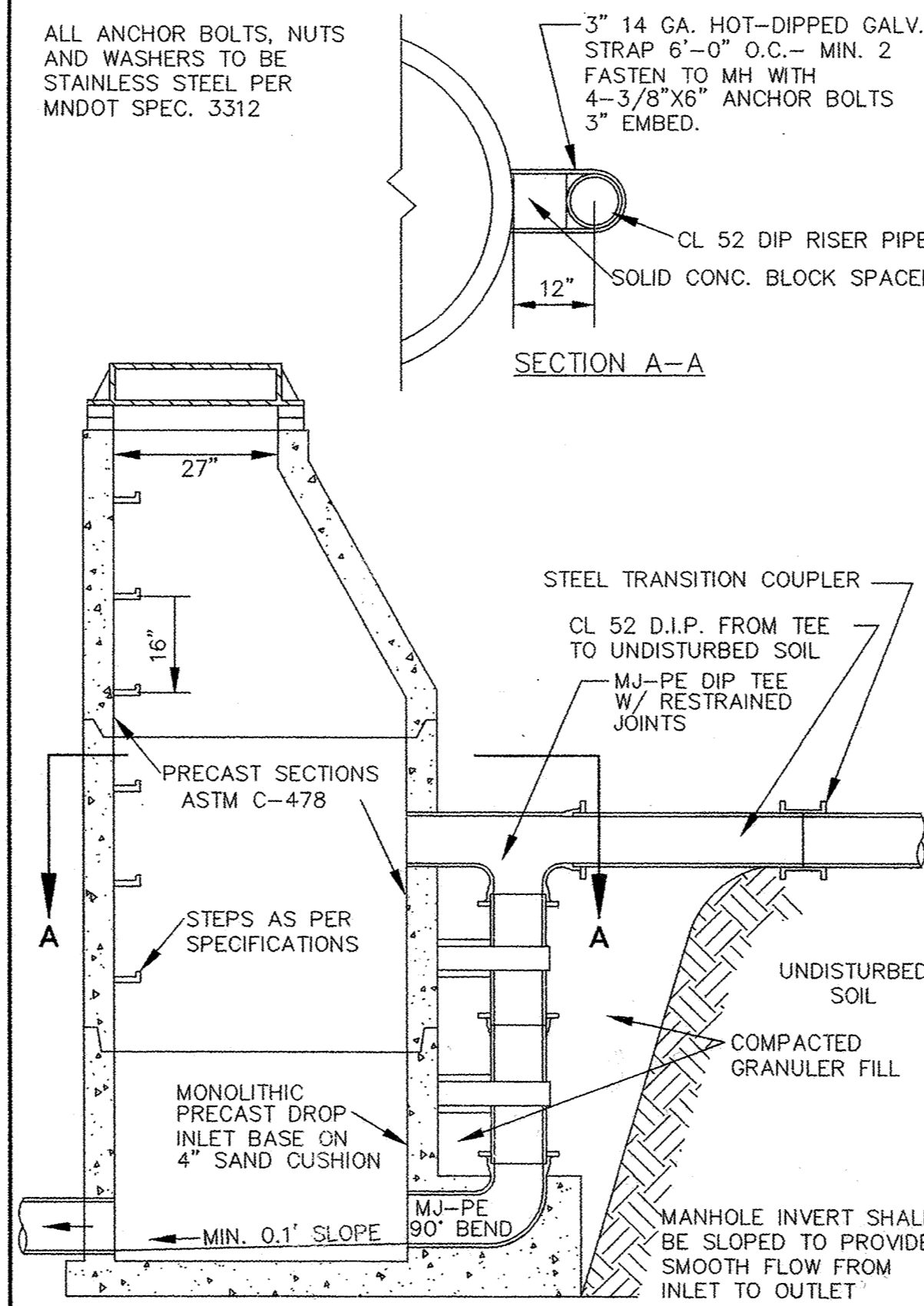
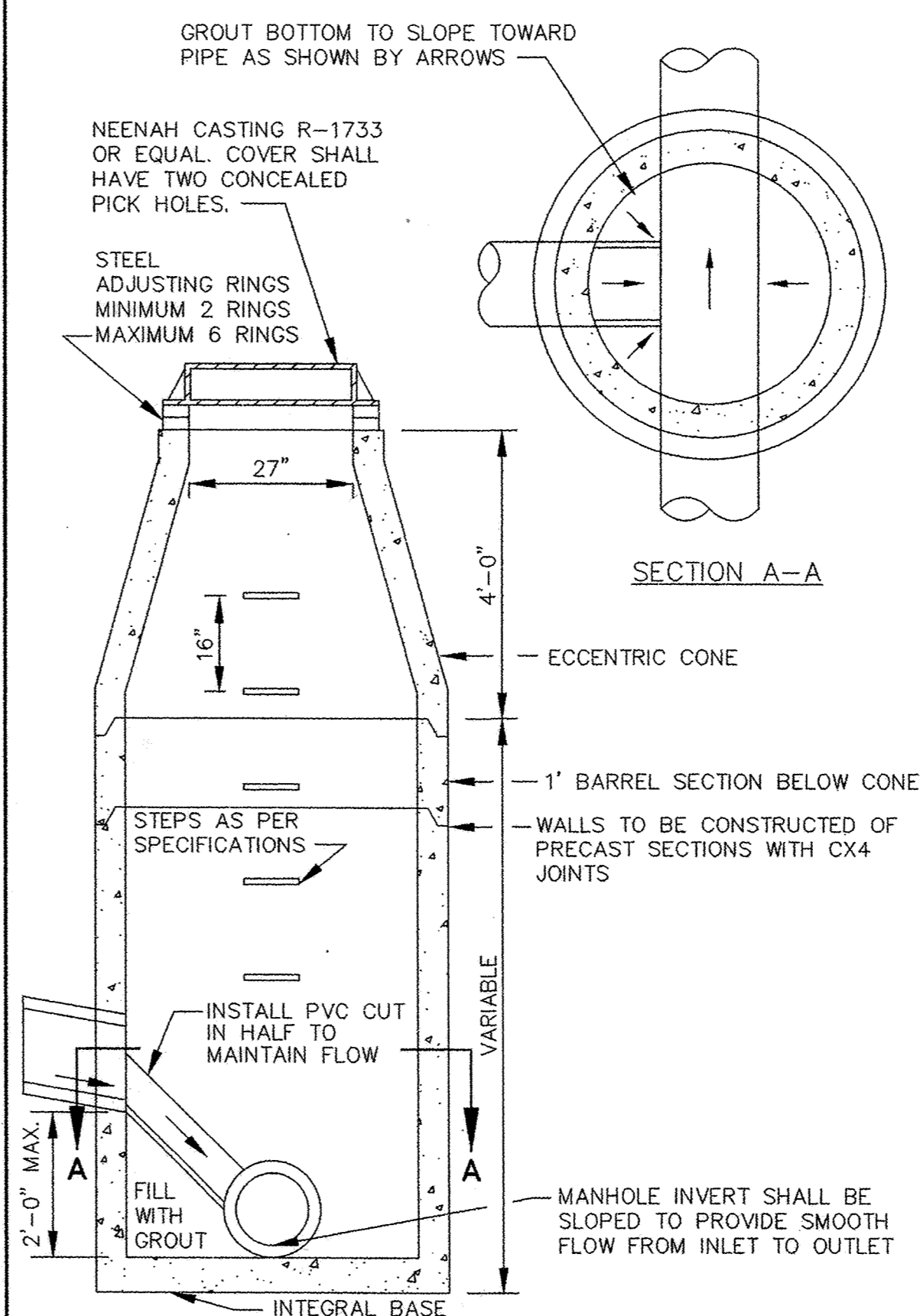


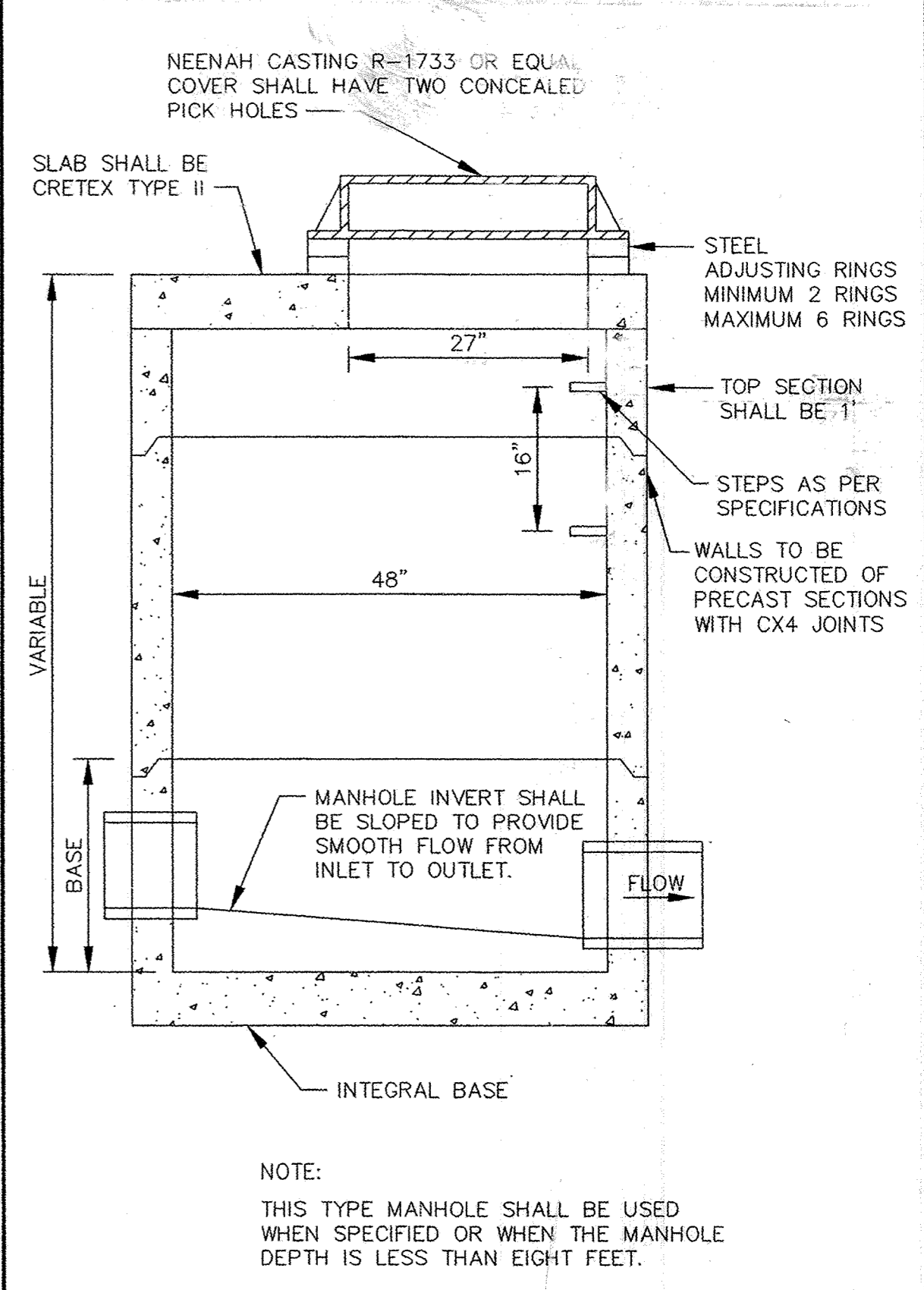
STANDARD AIR RELIEF MANHOLE



OUTSIDE DROP MANHOLE



INSIDE DROP MANHOLE (TWO FEET OR LESS)

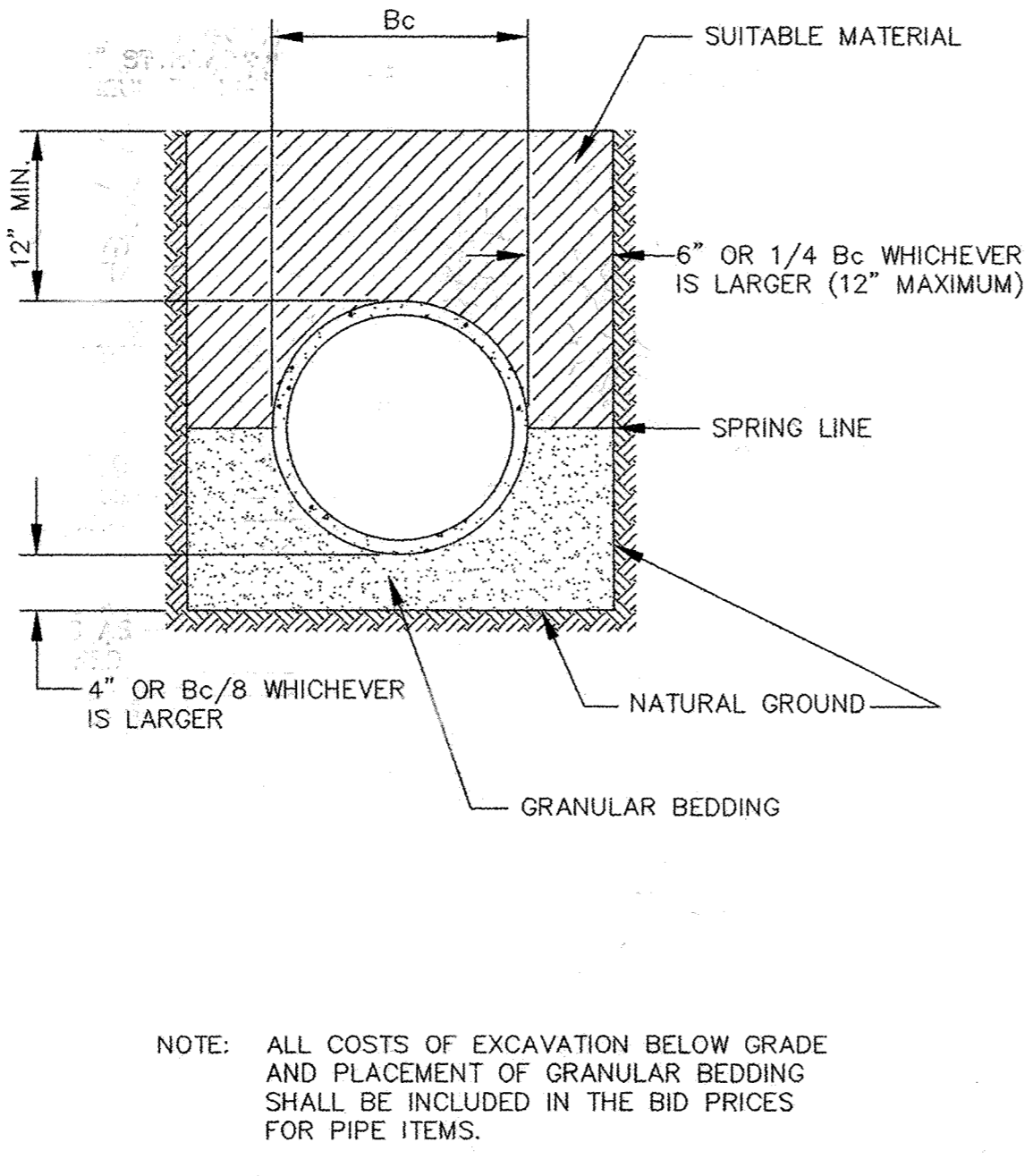


SLAB TOP MANHOLE

CONTRACTOR: RYAN CONTRACTING CO.
 RECORD DRAWING CONFORMING TO CONSTRUCTION RECORDS.
 BY STEVE PFLIPSEN DATE 12/6/07
 WESTWOOD PROFESSIONAL SERVICES

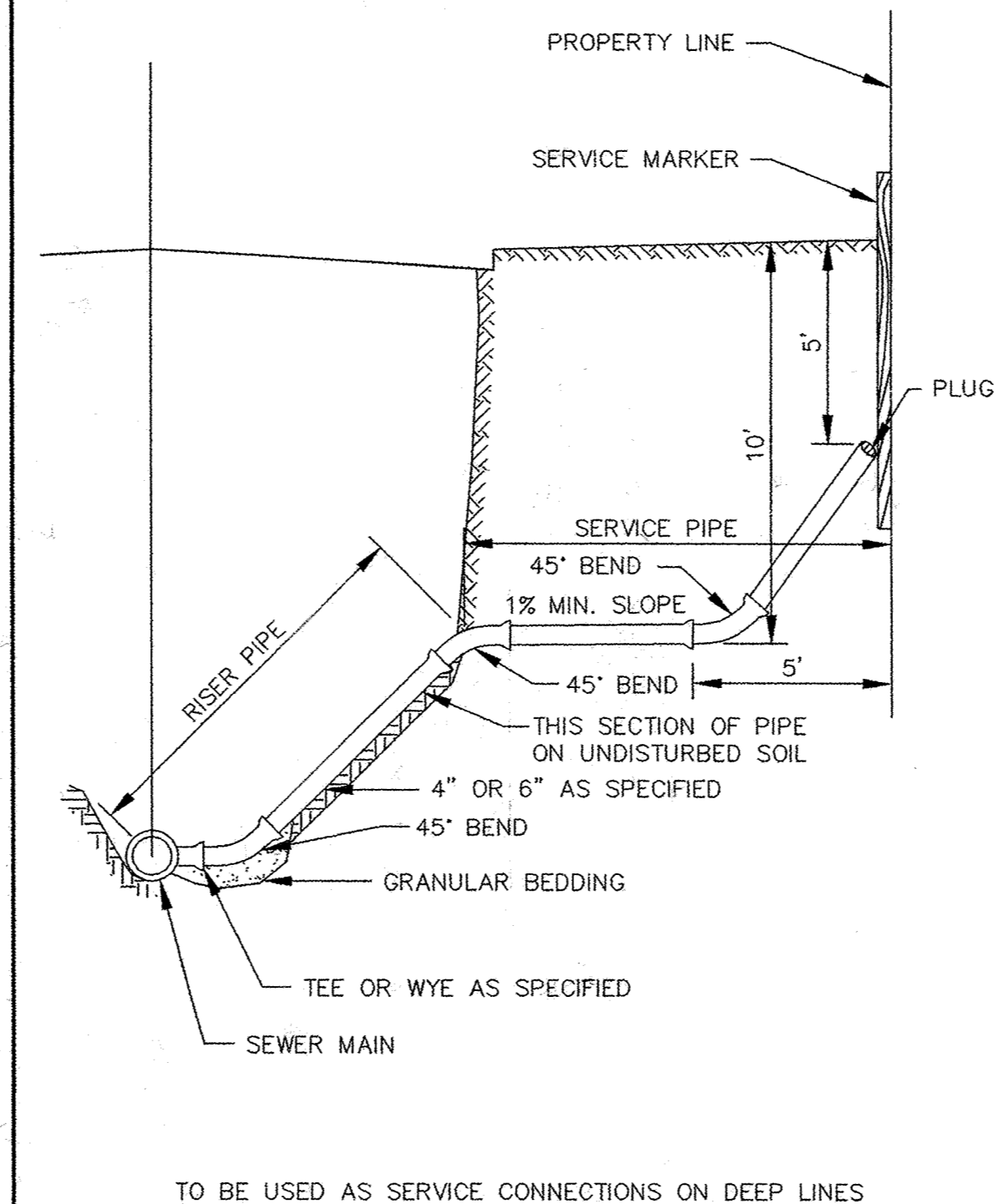
Westwood Professional Services, Inc.
 7599 Anagram Drive
 Eden Prairie, MN 55344
 Phone: 952/937-5150 Fax: 952/937-5822

PREPARED FOR
Van Den Berg Property
 10811 181st Avenue Northwest
 Elk River, Minnesota 55330



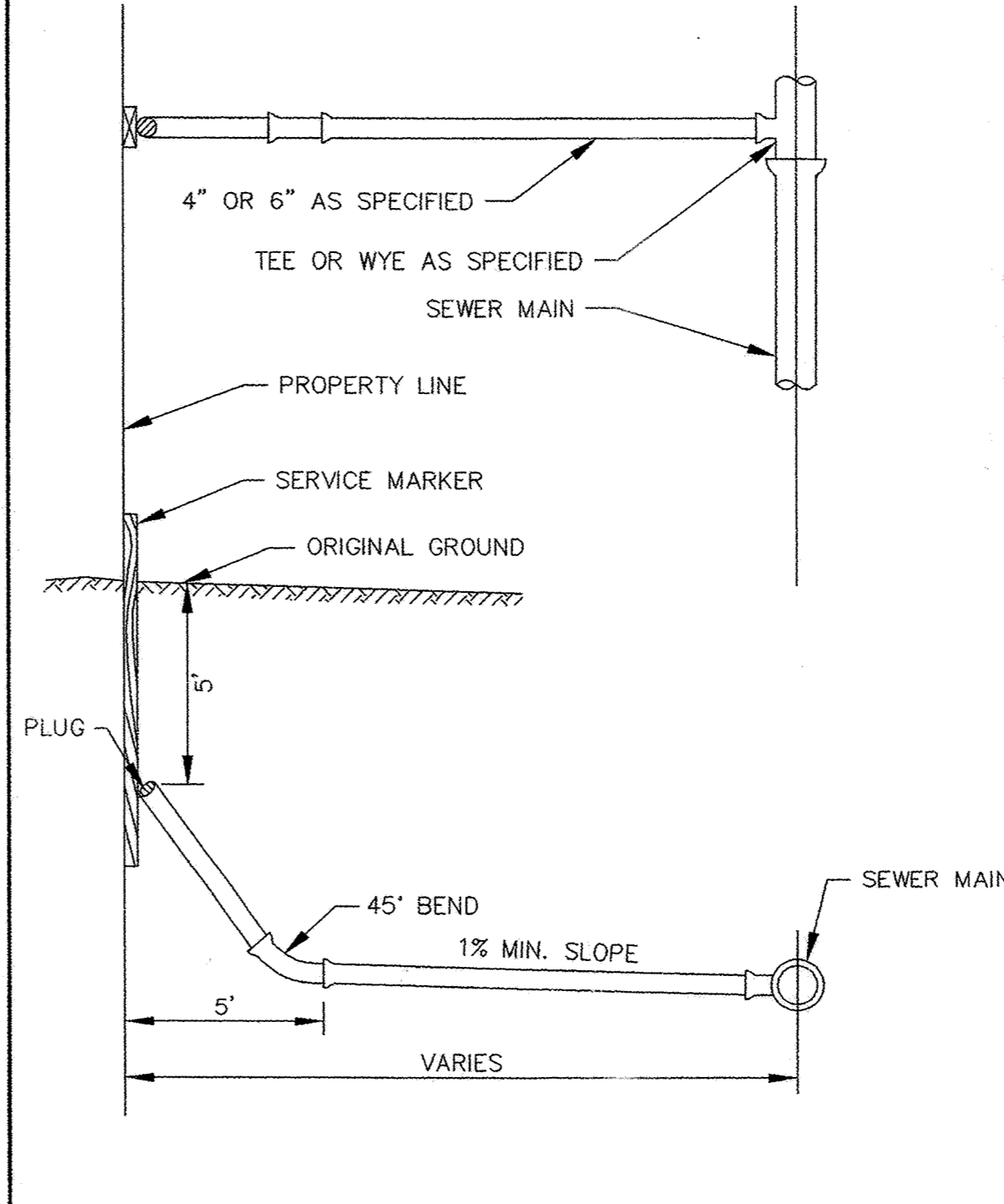
NOTE: ALL COSTS OF EXCAVATION BELOW GRADE AND PLACEMENT OF GRANULAR BEDDING SHALL BE INCLUDED IN THE BID PRICES FOR PIPE ITEMS.

CLASS B PIPE BEDDING

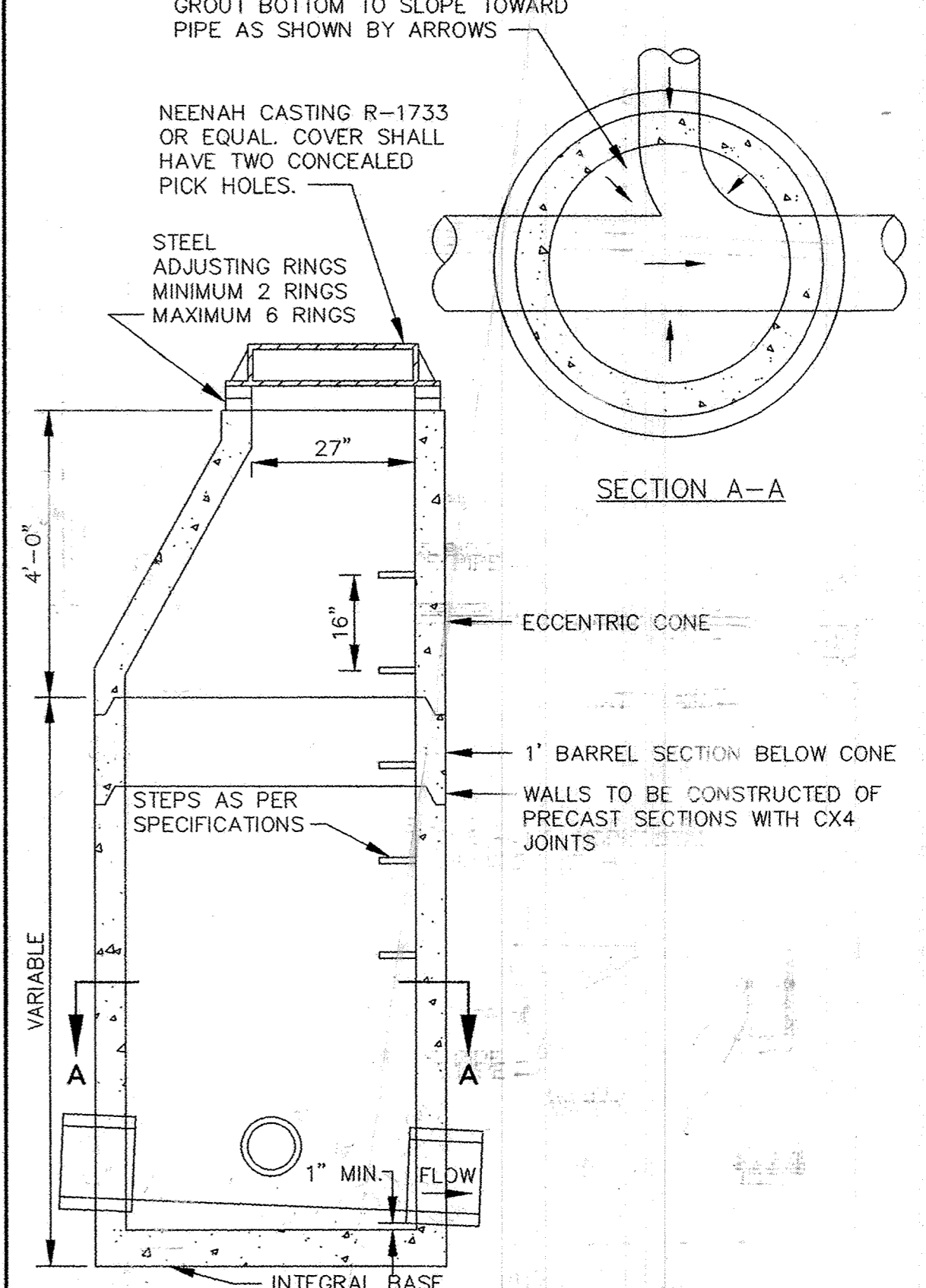


TO BE USED AS SERVICE CONNECTIONS ON DEEP LINES

SERVICE RISER SECTION



TYPICAL HOUSE SERVICE



STANDARD MANHOLE

DESIGNED BY: ---	DRAWN BY: ---
APPROVED: ---	JOB NUMBER: ---
CAD DATE: April 14, 1999 11:14:59 a.m.	
CAD FILE: 230000m\ER-SM.DWG	

HEREBY CERTIFY THAT THIS PLAN, SPECIFICATION, REPORT WAS PREPARED BY ME OR UNDER MY DIRECT SUPERVISION AND THAT I AM A DULY REGISTERED PROFESSIONAL ENGINEER UNDER THE LAWS OF THE STATE OF MINNESOTA.

NO.	DATE	BY	REVISION DESCRIPTION
1	03/20/06	DDB	CLIENT COMMENTS
2	10/20/06	GKB	RECORD DRAWINGS
3	01/15/07	SWW	RECORD DRAWINGS
4	04/26/07	SWW	FINAL RECORD DRAWINGS



1326 ENERGY PARK DRIVE
 ST. PAUL, MINNESOTA 55108
 (612) 644-4389
Howard R. Green Company
 CONSULTING ENGINEERS

**CITY OF ELK RIVER
 VAN DEN BERG PROPERTY
 SANITARY SEWER DETAILS**

SHEET NO.	5 OF 8
-----------	--------------