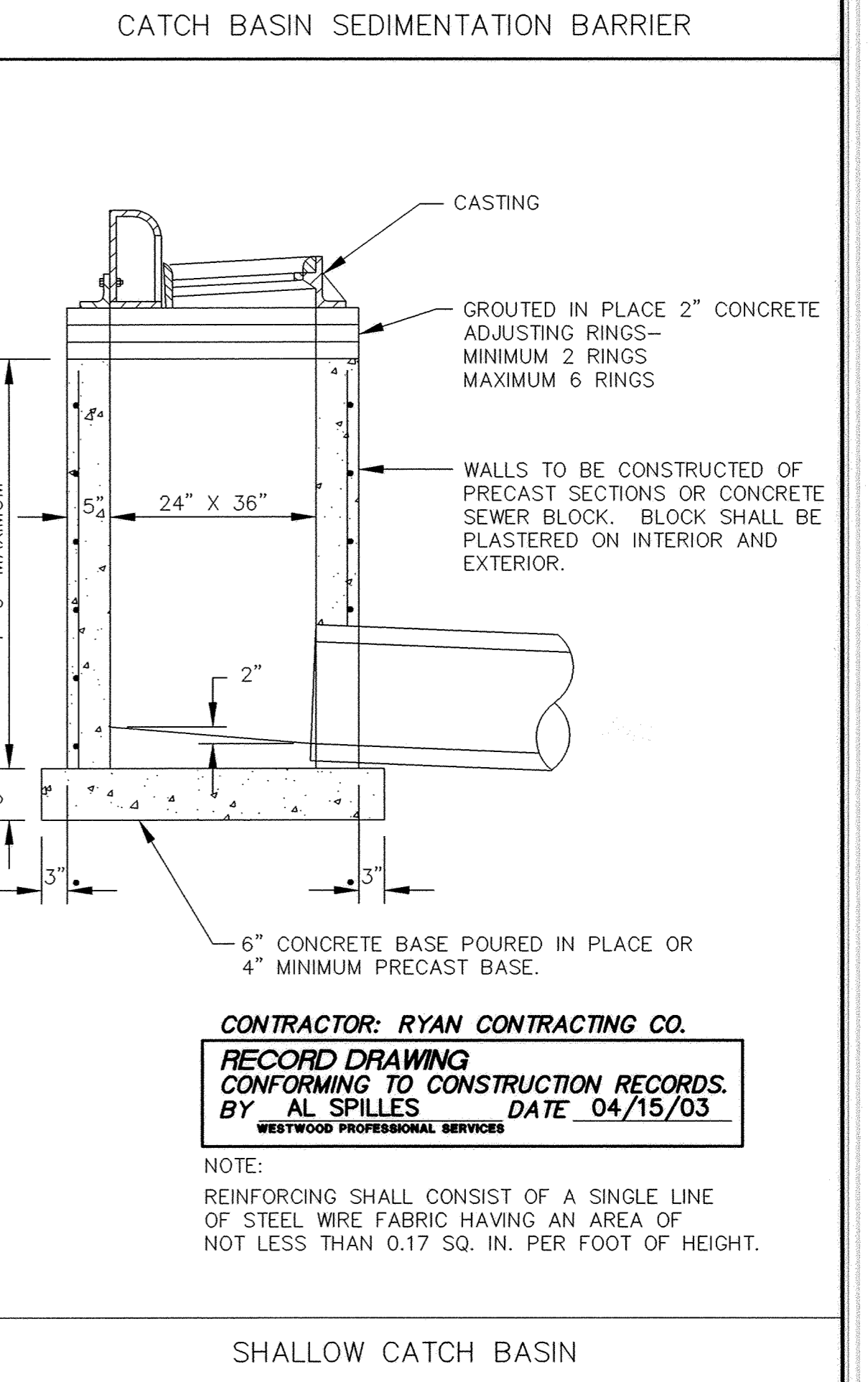
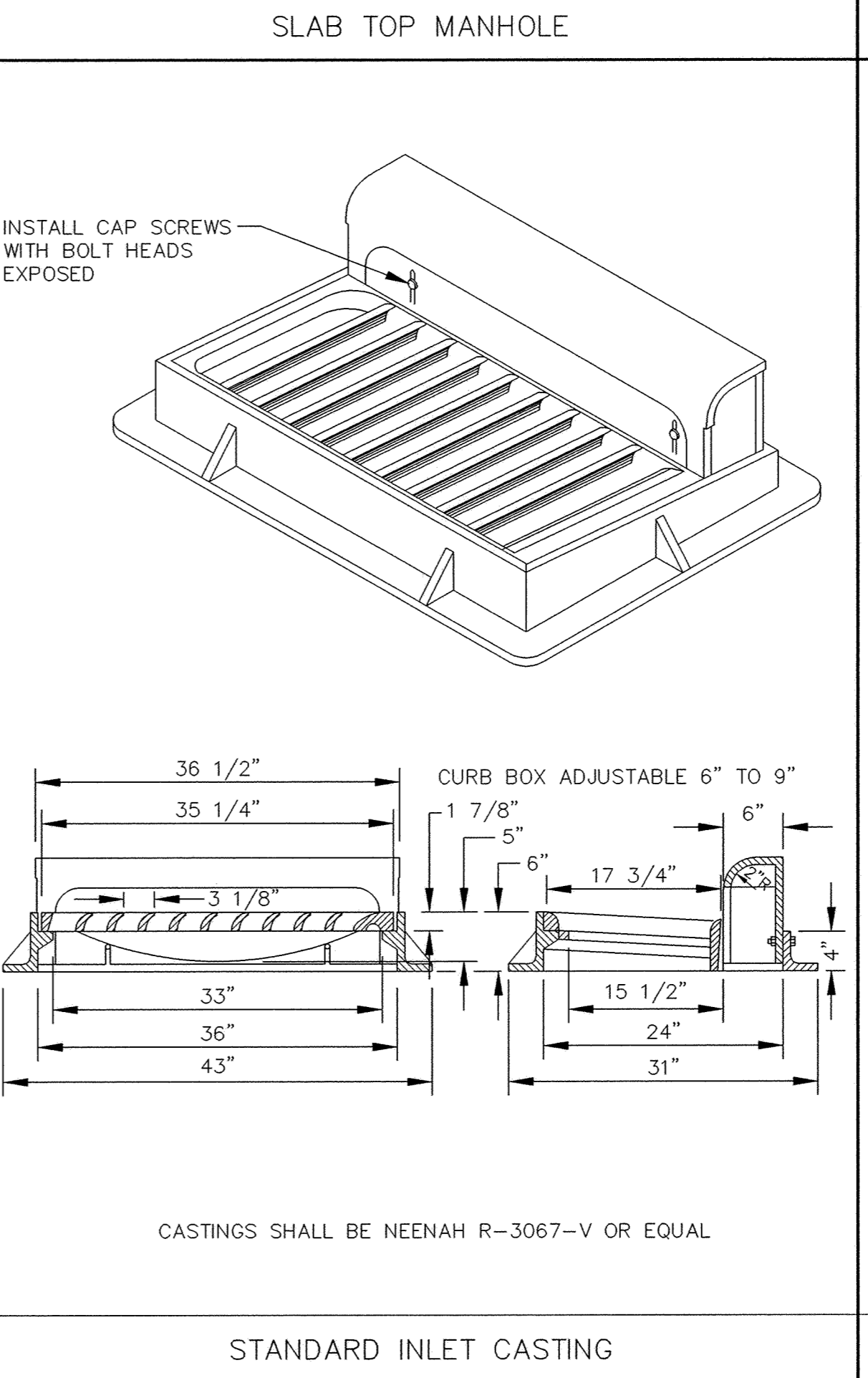
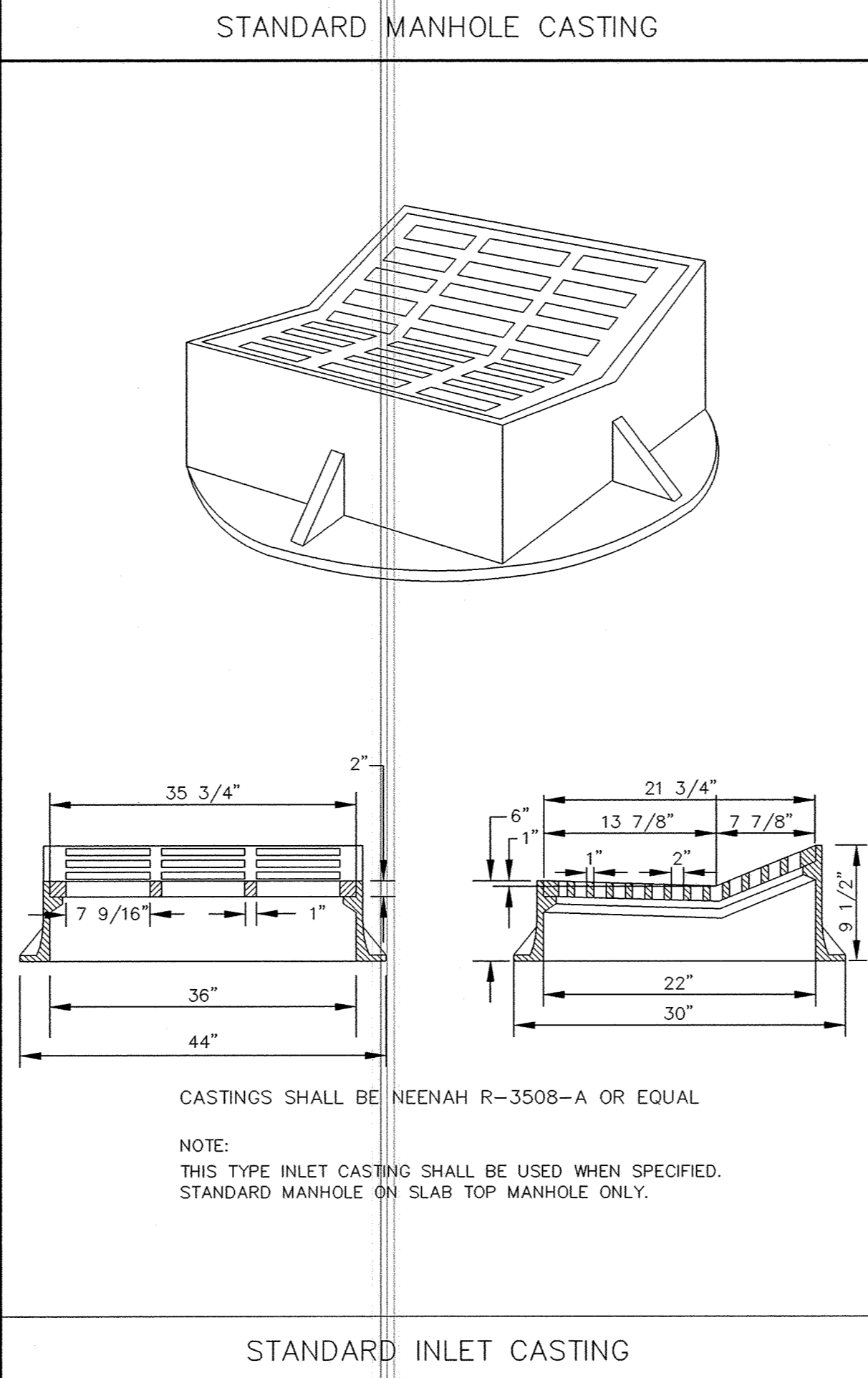
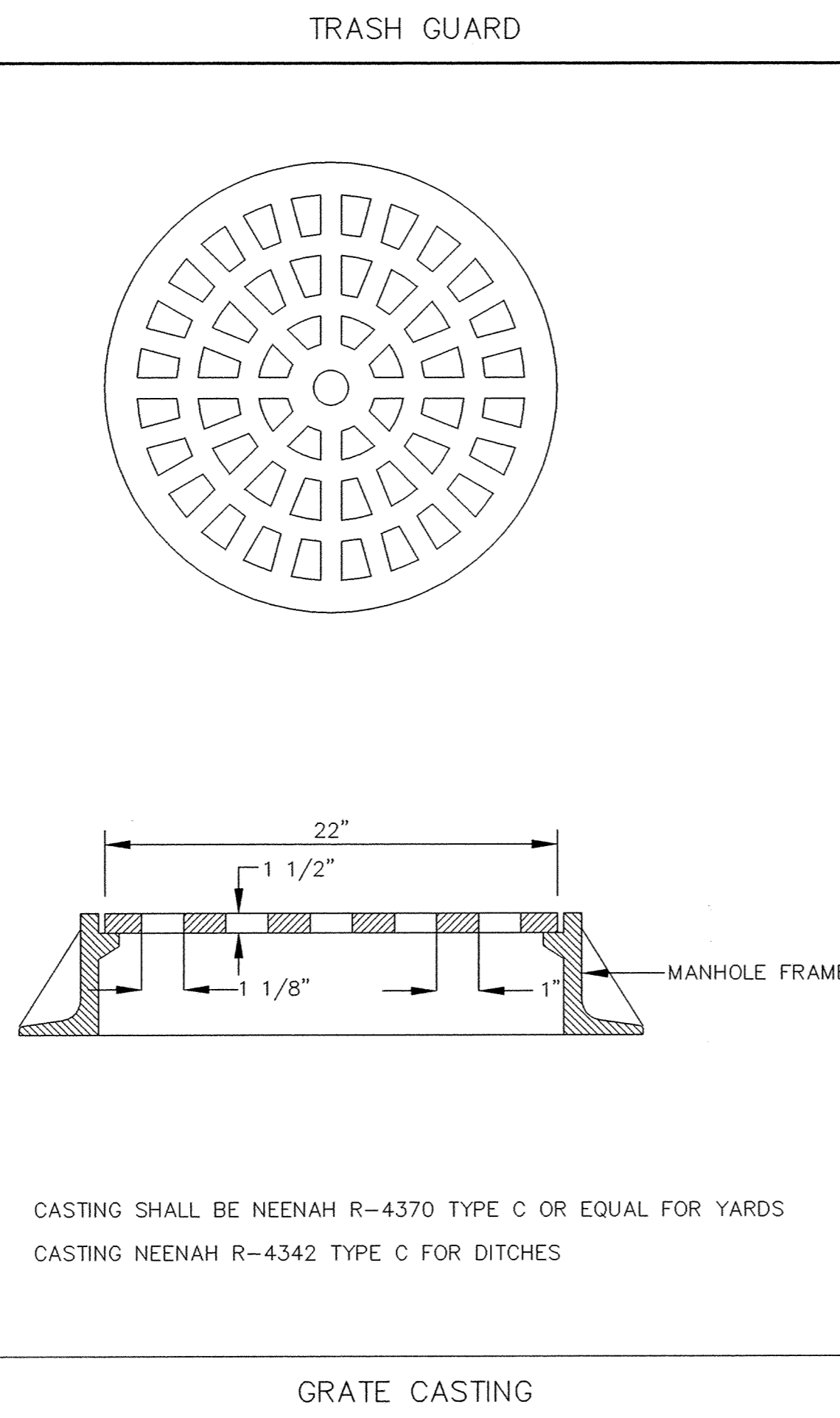
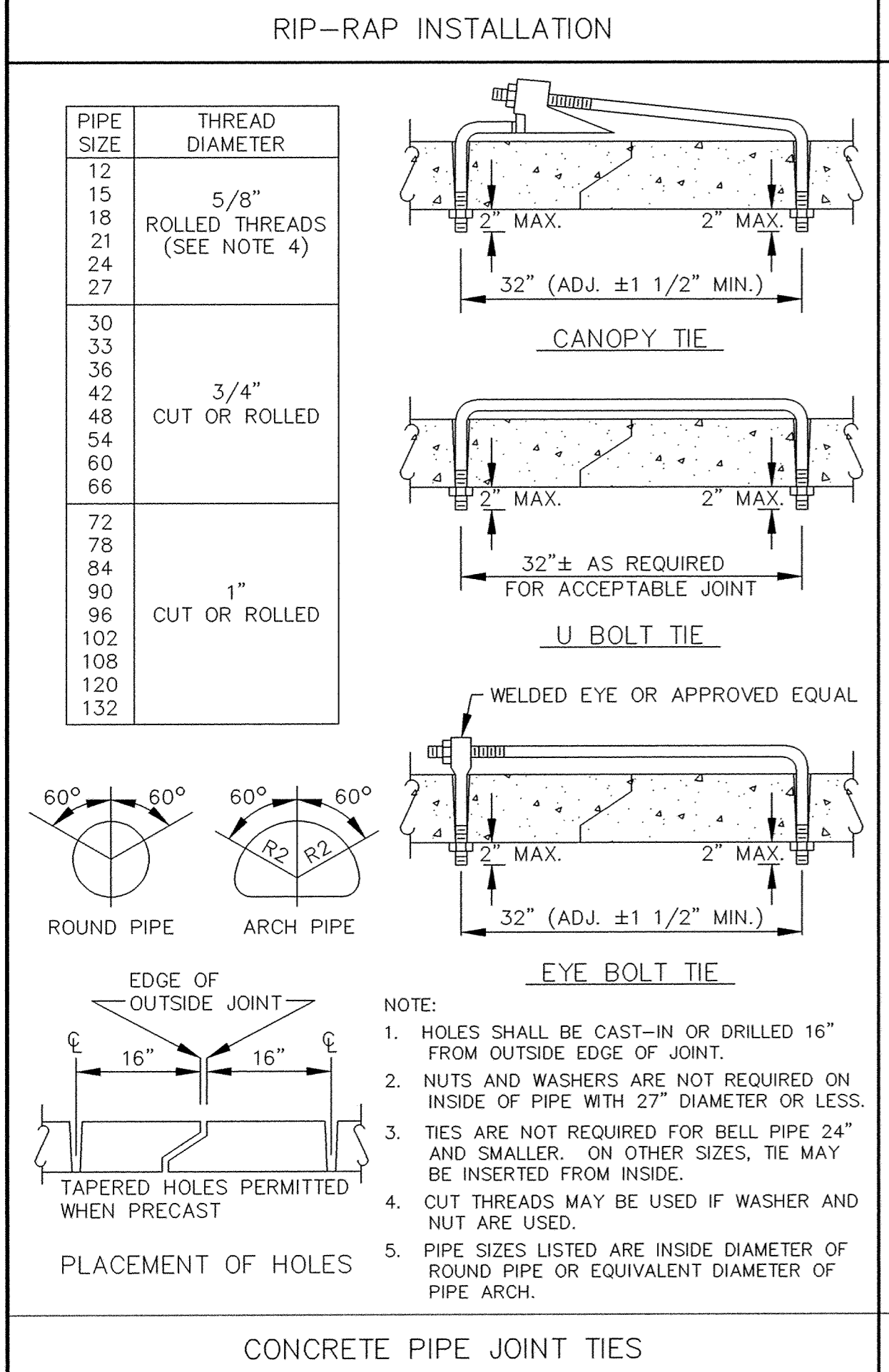
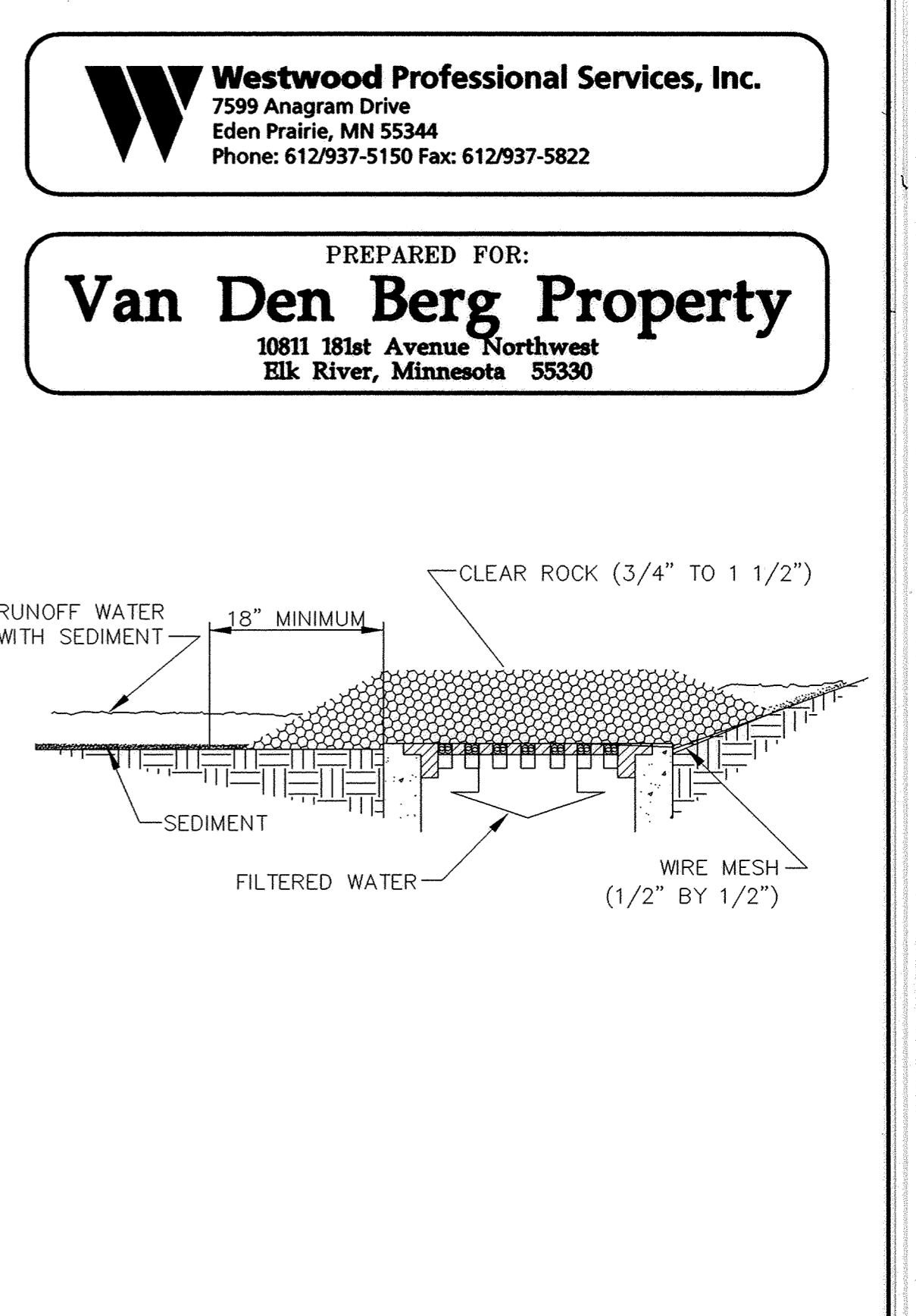
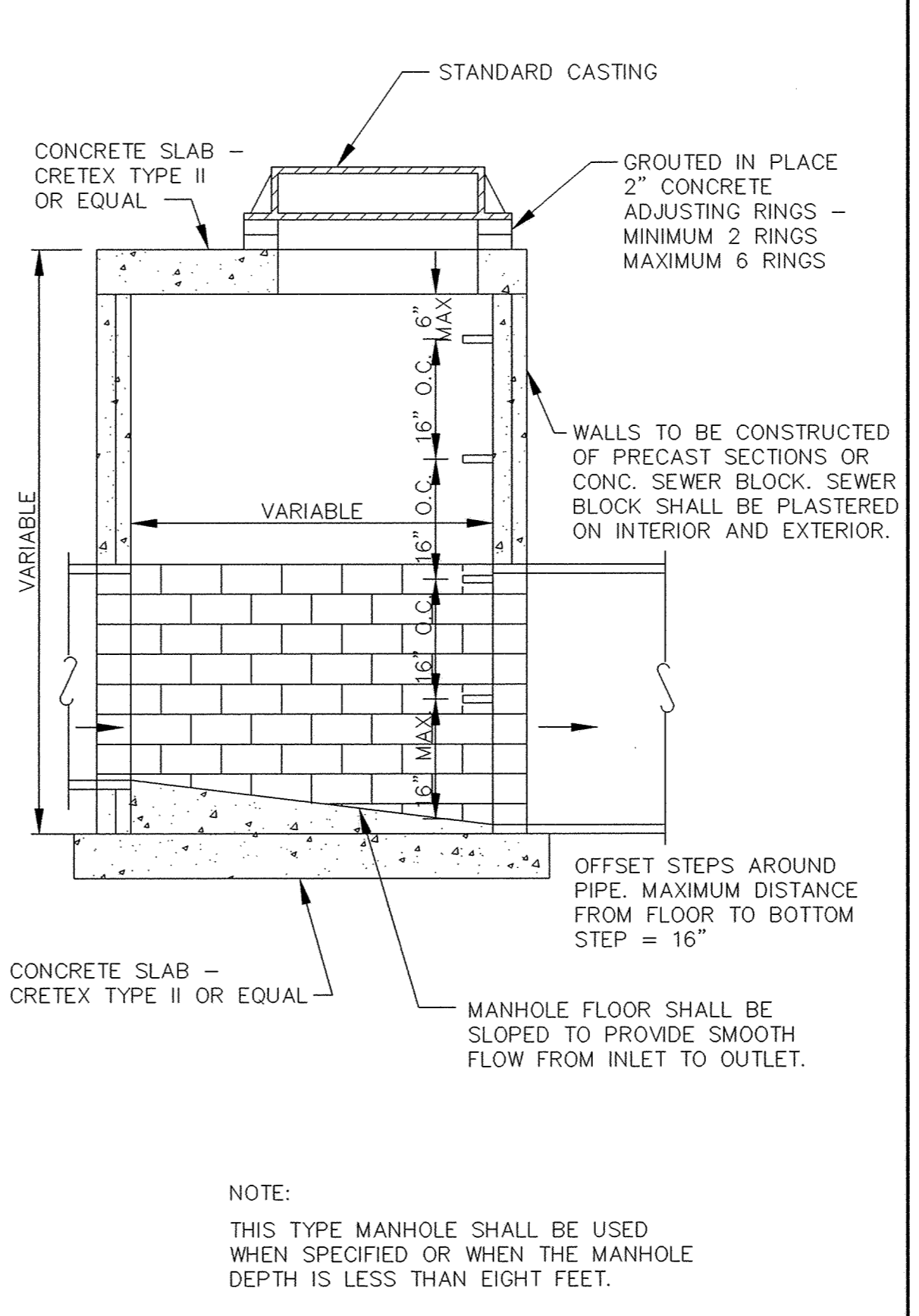
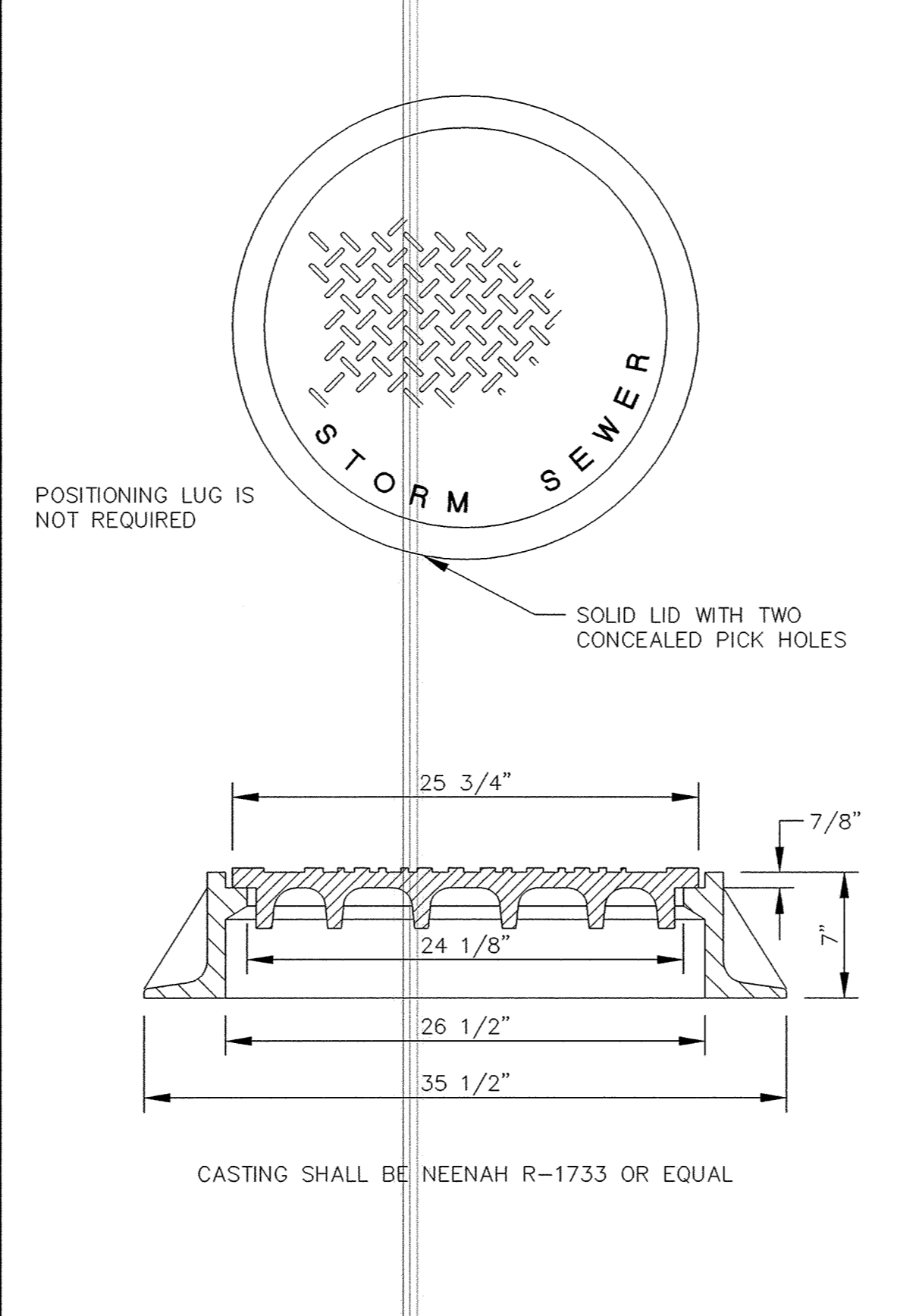
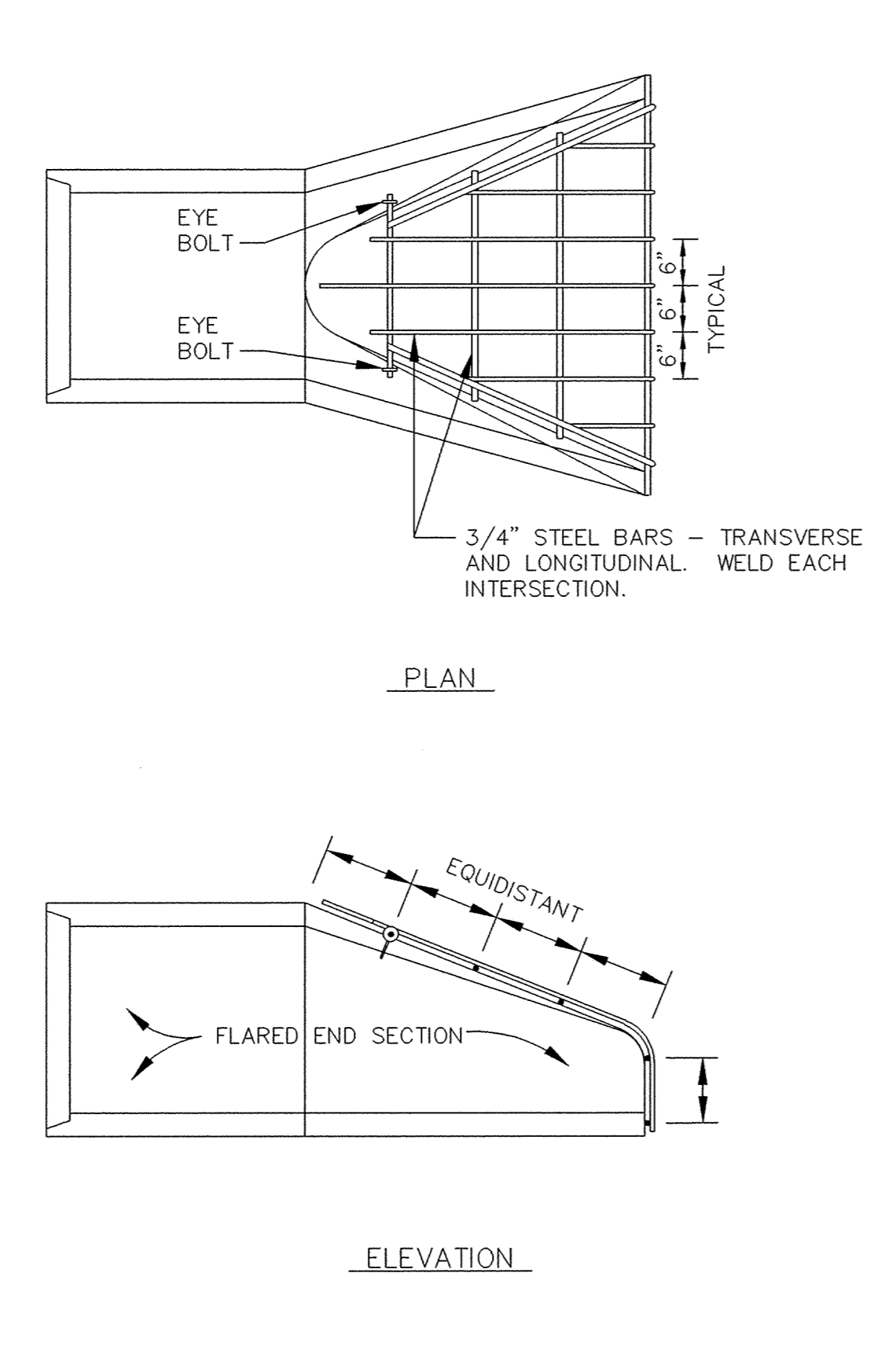
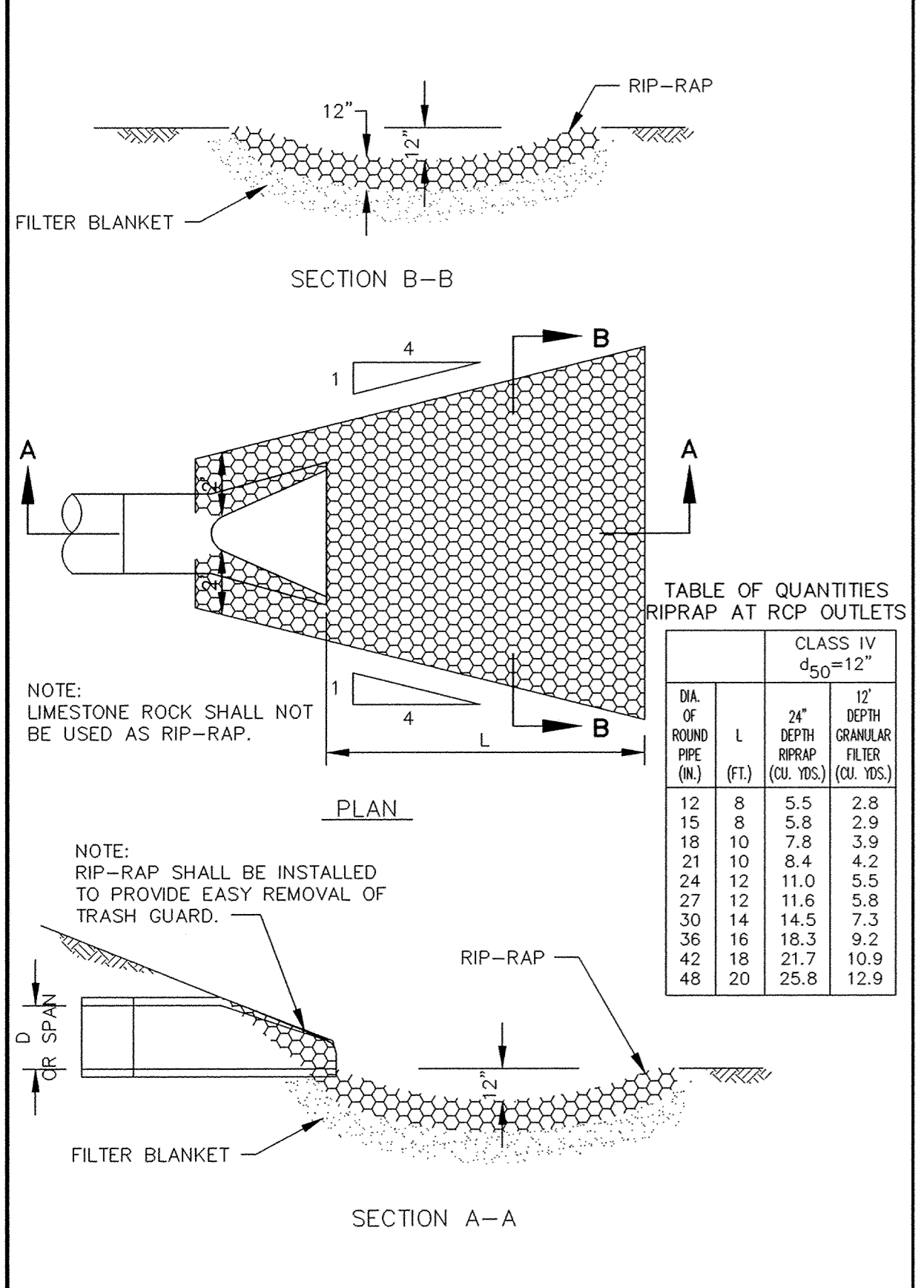


**Westwood Professional Services, Inc.**  
 7599 Anagram Drive  
 Eden Prairie, MN 55344  
 Phone: 612/937-5150 Fax: 612/937-5822

PREPARED FOR:  
**Van Den Berg Property**  
 10811 181st Avenue Northwest  
 Elk River, Minnesota 55330



DESIGNED BY: \_\_\_\_\_ DRAWN BY: \_\_\_\_\_  
 APPROVED: \_\_\_\_\_ JOB NUMBER \_\_\_\_\_  
 CAD DATE: April 14, 1999 11:14:59 a.m.  
 CAD FILE: 230000m\ER-SM.DWG

I HEREBY CERTIFY THAT THIS PLAN, SPECIFICATION, OR REPORT WAS PREPARED BY ME OR UNDER MY DIRECT SUPERVISION AND THAT I AM A DULY REGISTERED PROFESSIONAL ENGINEER UNDER THE LAWS OF THE STATE OF MINNESOTA.  
 DATE \_\_\_\_\_ REG. NO. \_\_\_\_\_

NO.	DATE	BY	REVISION DESCRIPTION
1	04/15/03	AS	RECORD DRAWINGS

1326 ENERGY PARK DRIVE  
 ST. PAUL, MINNESOTA 55108  
 (612) 644-4389  
**Howard R. Green Company**  
 CONSULTING ENGINEERS

CITY OF ELK RIVER  
 VAN DEN BERG PROPERTY  
 STORM SEWER DETAILS

SHEET NO.  
 7  
 OF  
 8