

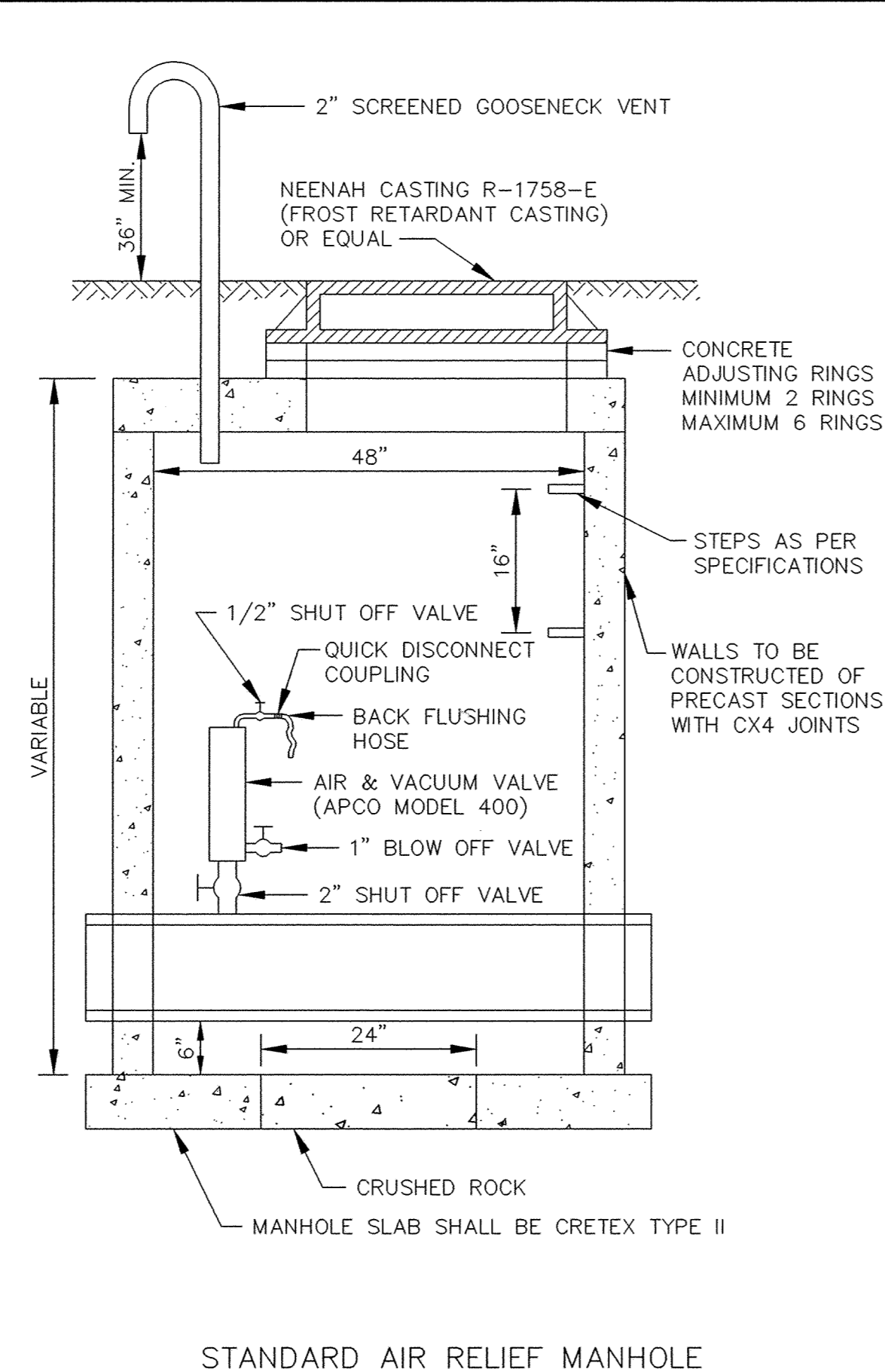
P:\20021059\dwg\RECORD\20021059de@1.dwg 04/16/2003 09:58:57 AM CDT

DRAWING NUMBER

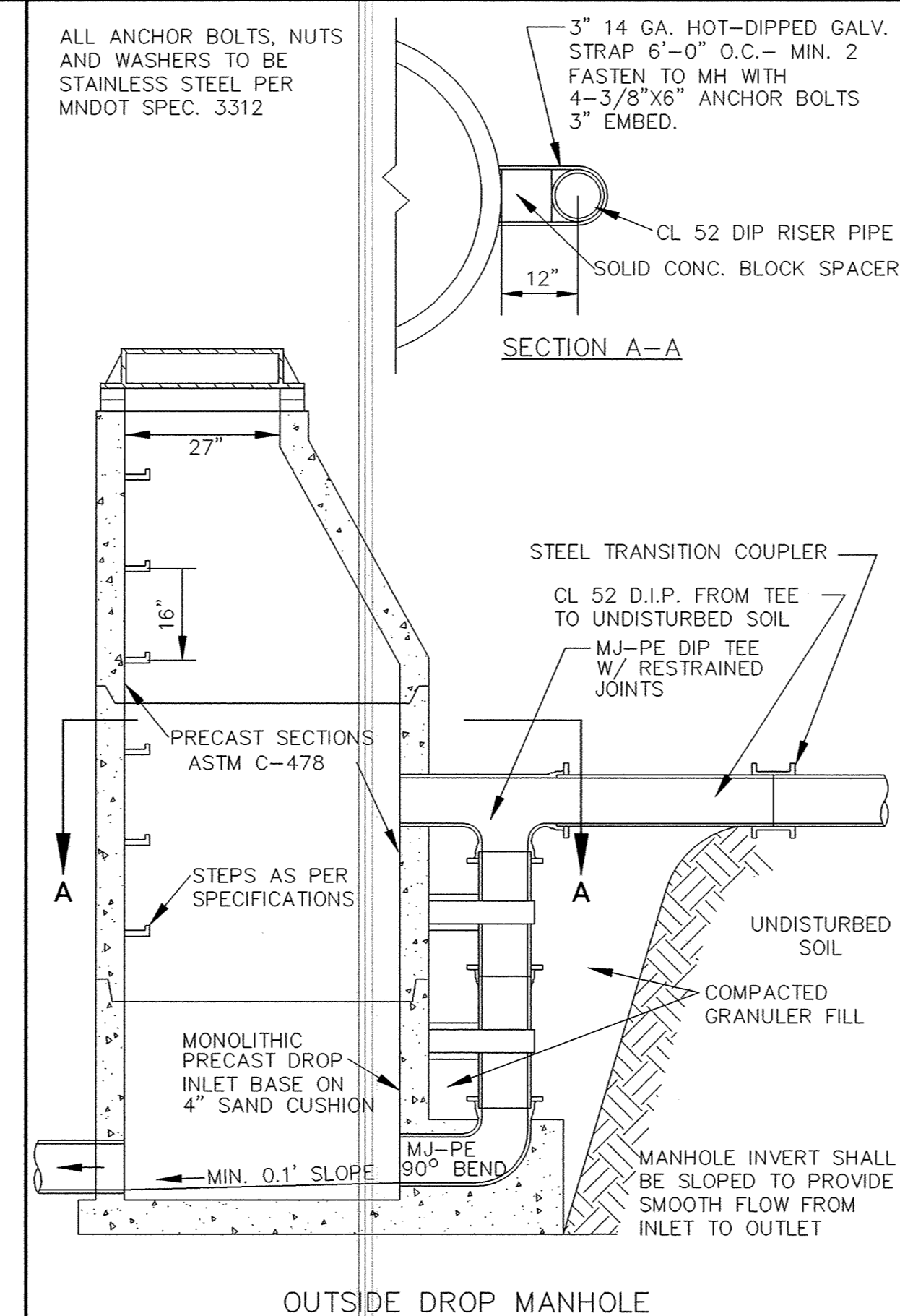
DRAWING NUMBER

DRAWING NUMBER

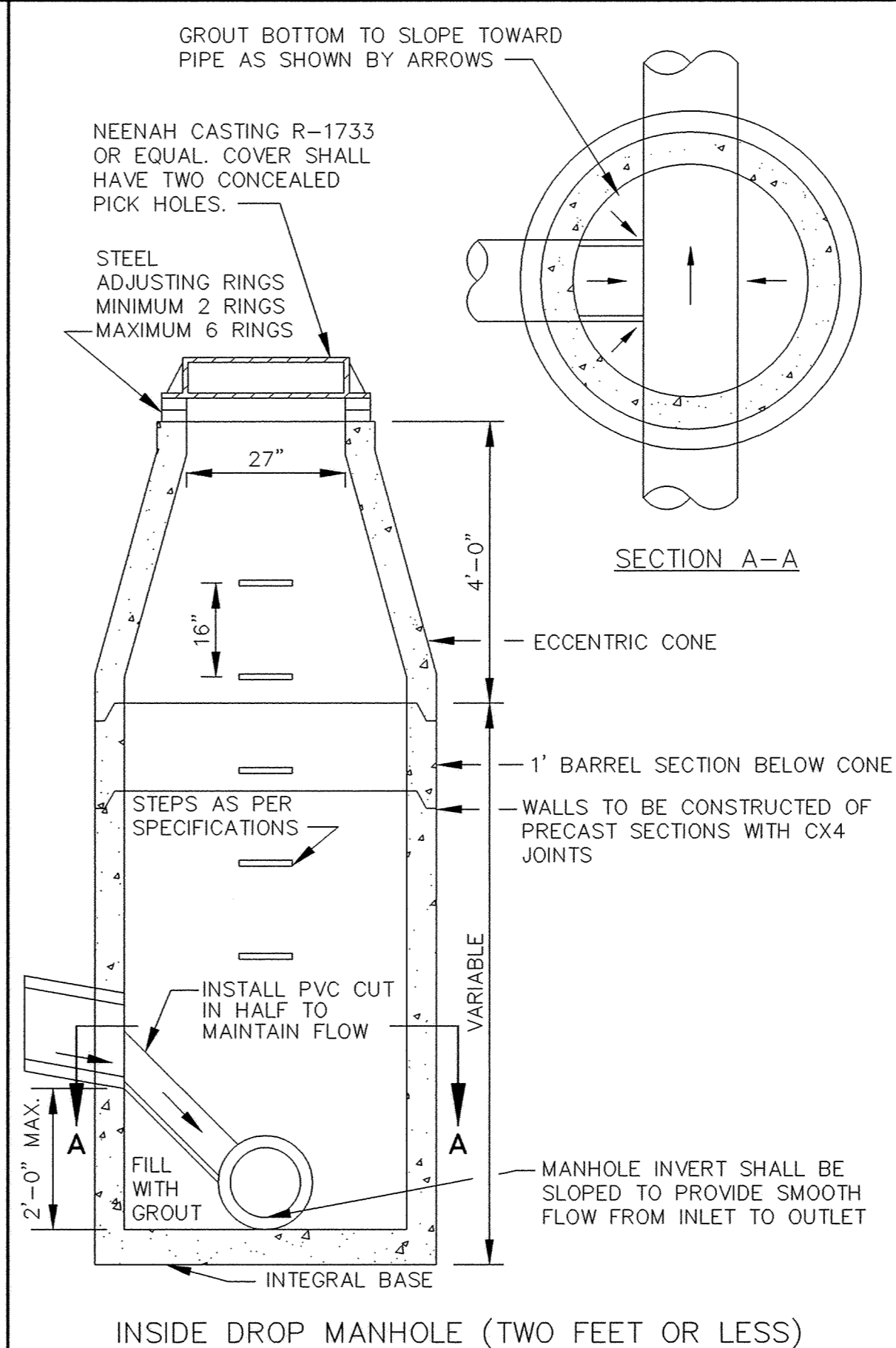
DRAWING NUMBER
VANDE.03



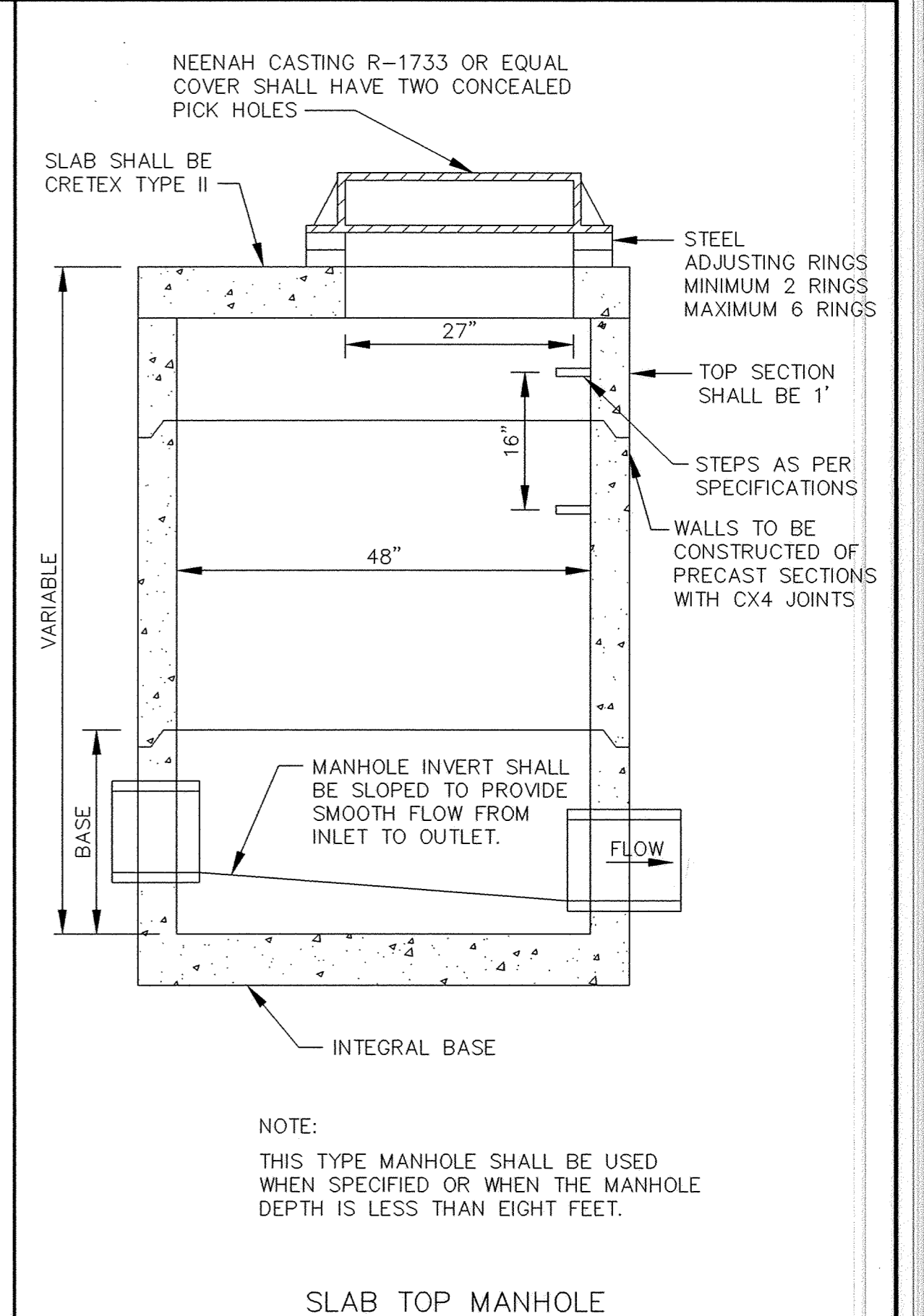
STANDARD AIR RELIEF MANHOLE



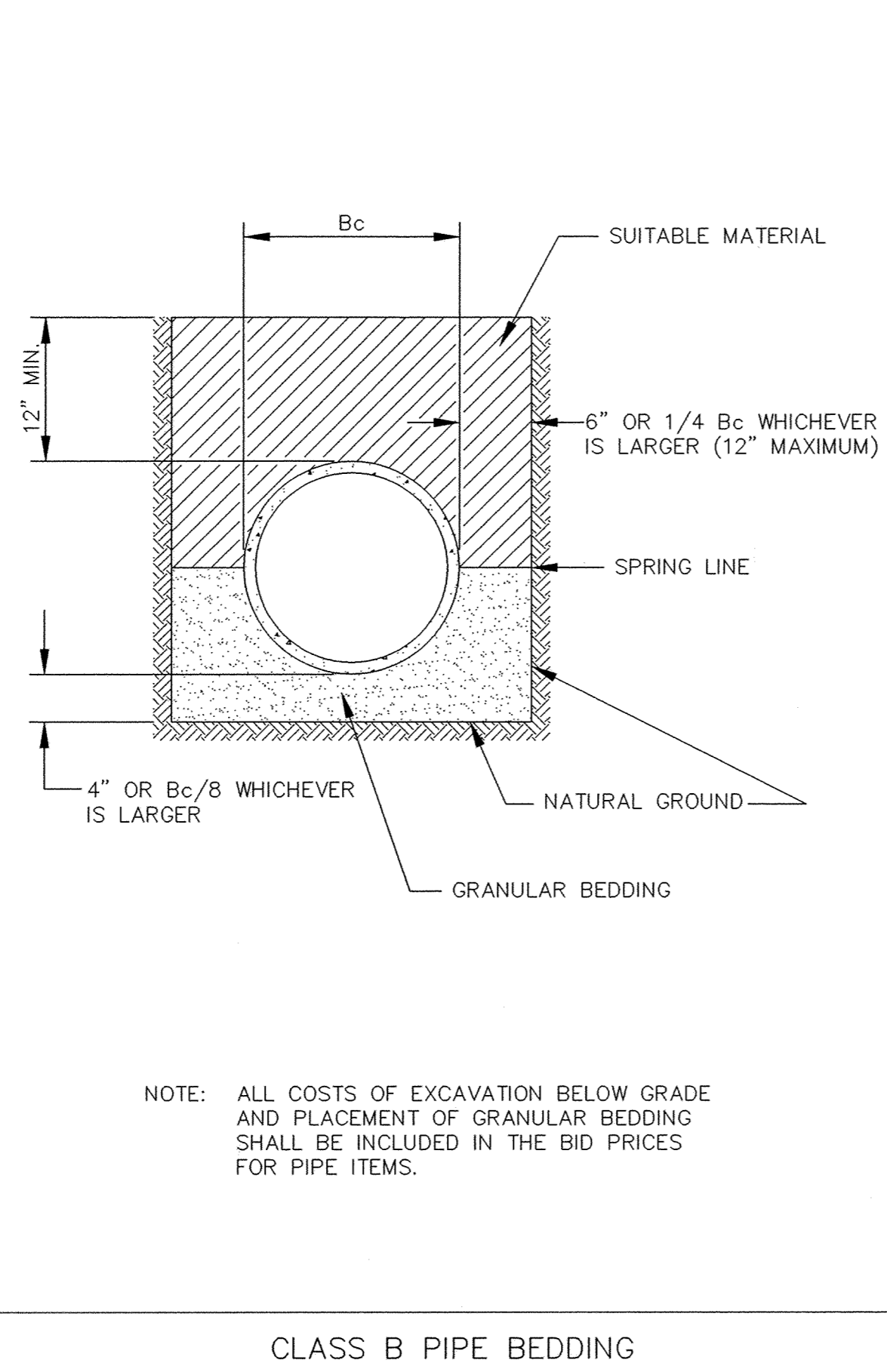
OUTSIDE DROP MANHOLE



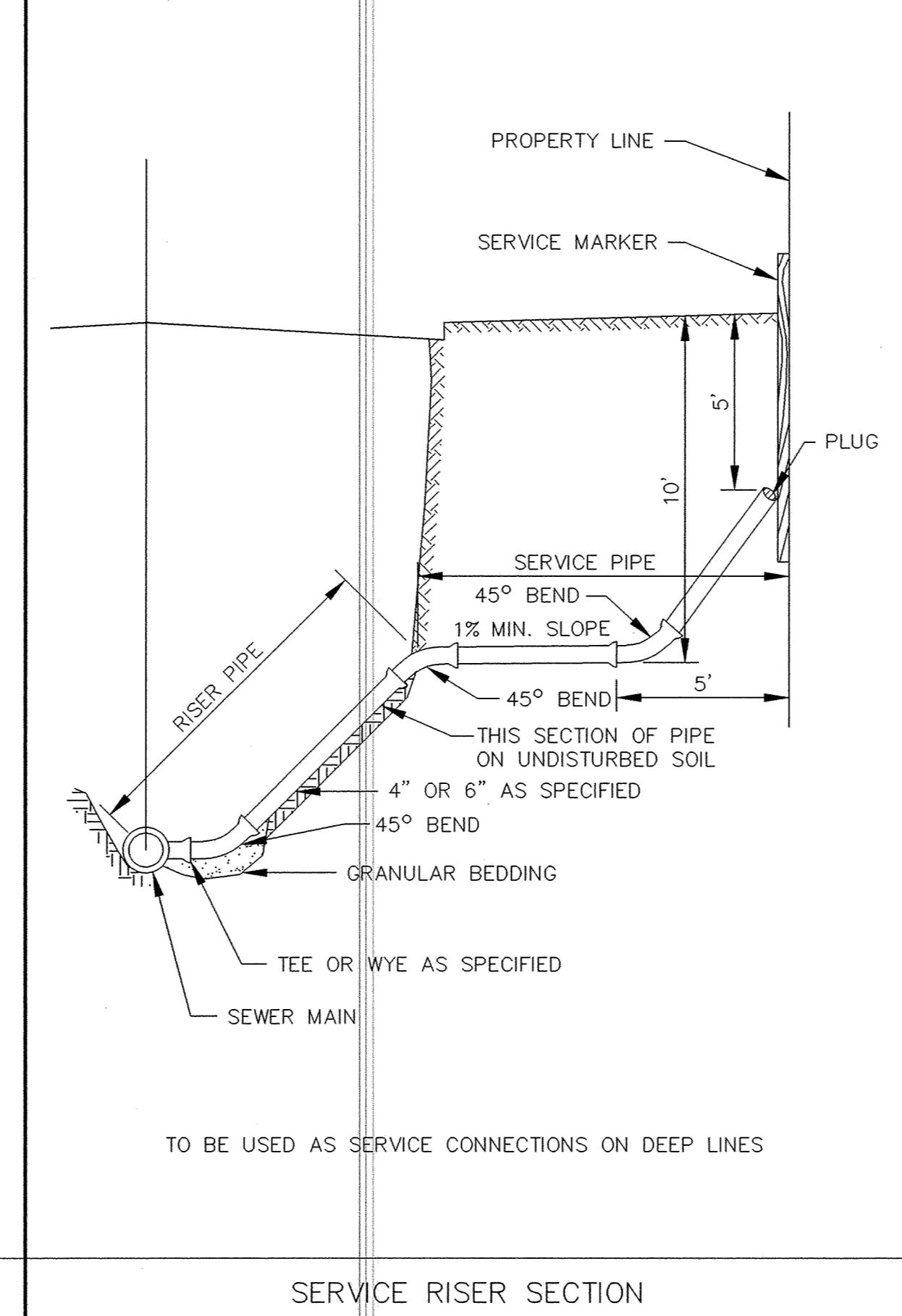
INSIDE DROP MANHOLE (TWO FEET OR LESS)



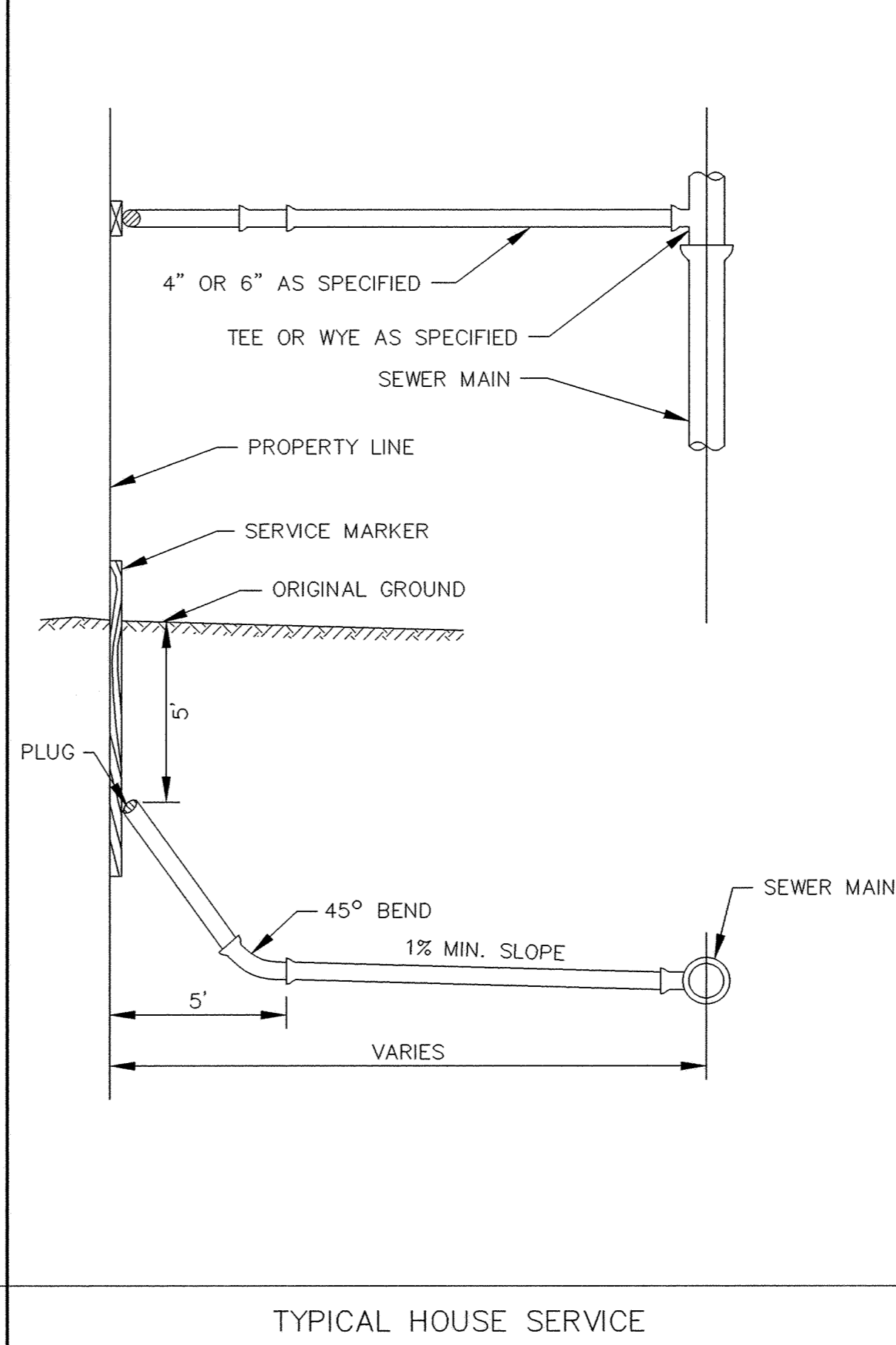
SLAB TOP MANHOLE



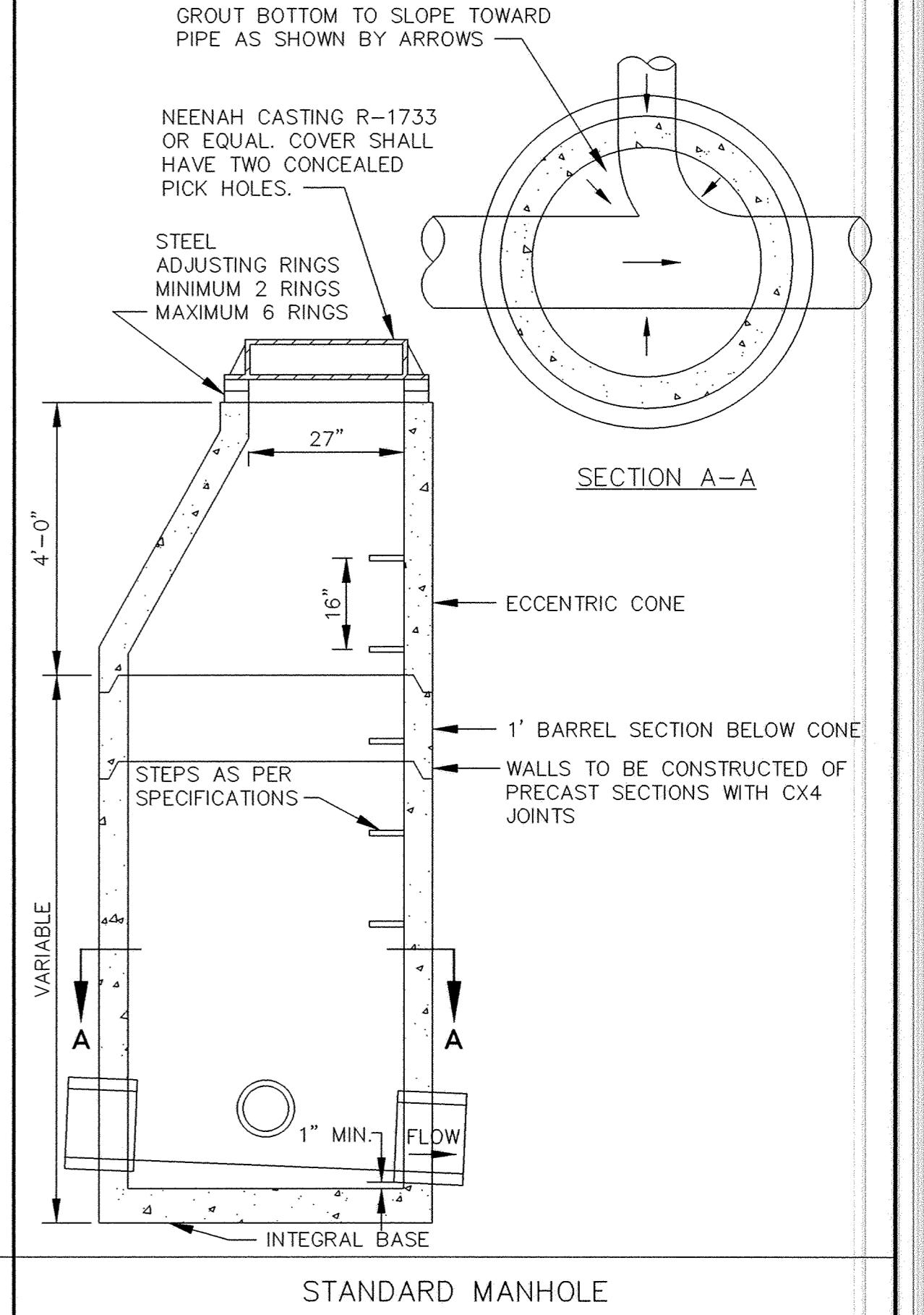
CLASS B PIPE BEDDING



SERVICE RISER SECTION



TYPICAL HOUSE SERVICE



STANDARD MANHOLE

CONTRACTOR: RYAN CONTRACTING CO.
RECORD DRAWING
CONFORMING TO CONSTRUCTION RECORDS.
BY AL SPILLES DATE 04/15/03
WESTWOOD PROFESSIONAL SERVICES

Westwood Professional Services, Inc.
7599 Anagram Drive
Eden Prairie, MN 55344
Phone: 952/937-5150 Fax: 952/937-5822

PREPARED FOR:
Van Den Berg Property
10811 181st Avenue Northwest
Elk River, Minnesota 55330

I HEREBY CERTIFY THAT THIS PLAN, SPECIFICATION, OR REPORT WAS PREPARED BY ME OR UNDER MY DIRECT SUPERVISION AND THAT I AM A DULY REGISTERED PROFESSIONAL ENGINEER UNDER THE LAWS OF THE STATE OF MINNESOTA.
DATE _____ REG. NO. _____

NO.	DATE	BY	REVISION DESCRIPTION
1	04/15/03	AS	RECORD DRAWINGS

1326 ENERGY PARK DRIVE
ST. PAUL, MINNESOTA 55108
(612) 644-4389
Howard R. Green Company
CONSULTING ENGINEERS

CITY OF ELK RIVER
VAN DEN BERG PROPERTY
SANITARY SEWER DETAILS

SHEET NO.
5
OF
8