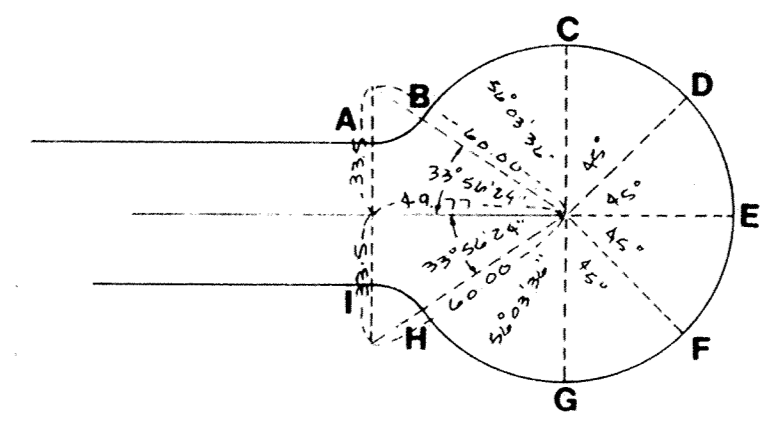
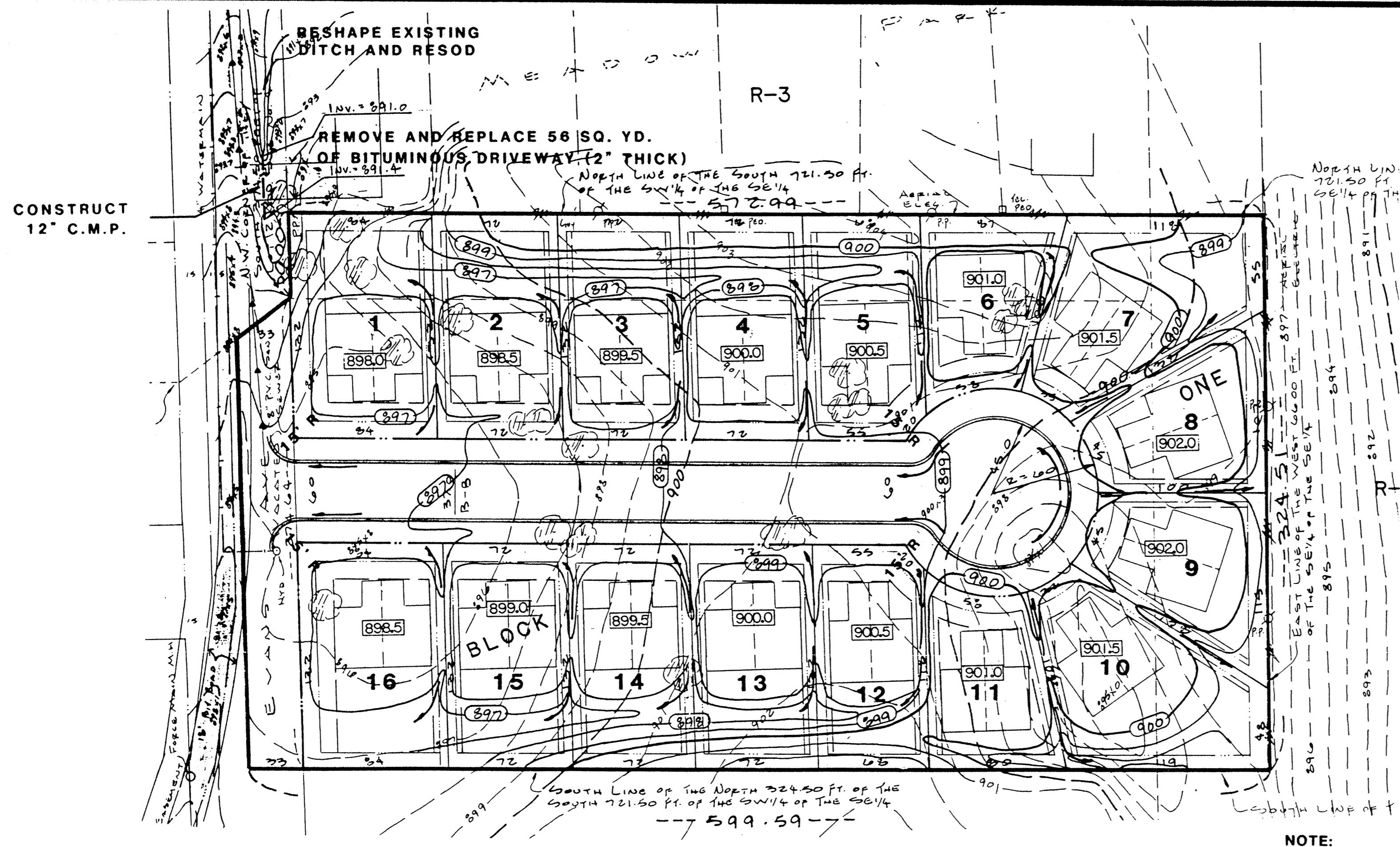
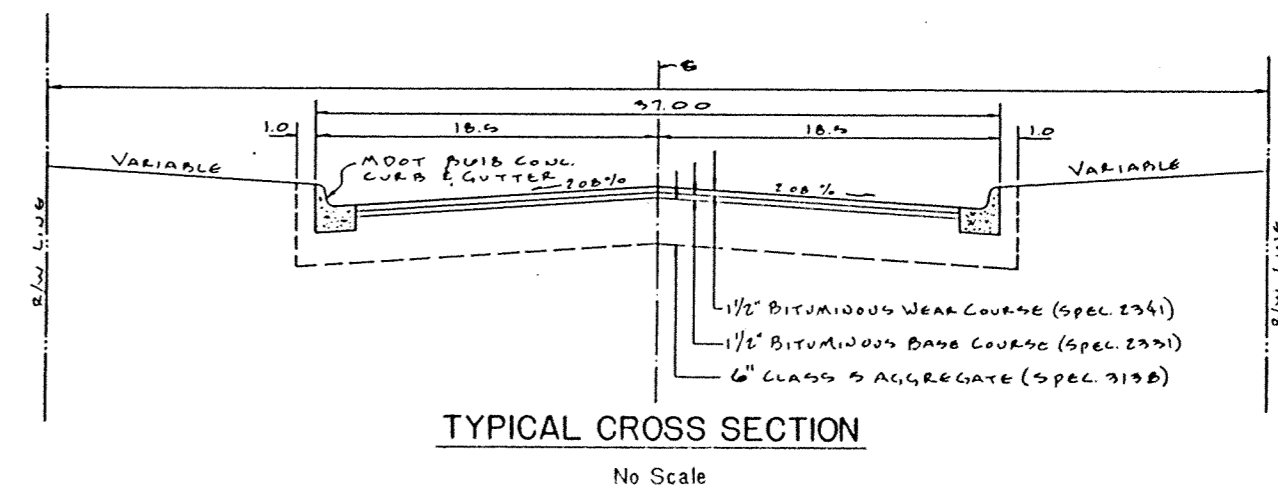


Fed. Proj. No.



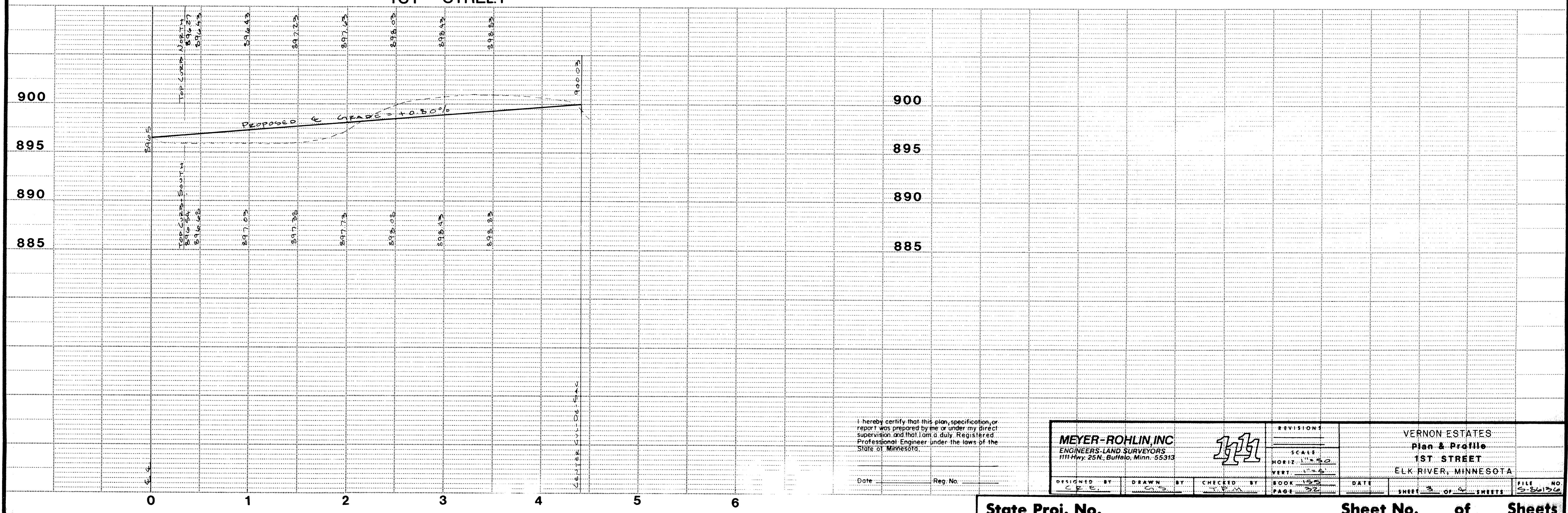
TOP CURB EL. ON CUL-DE-SAC

A	898.97
B	899.19
C	899.46
D	899.75
E	900.03
F	899.75
G	899.46
H	899.19
I	898.97



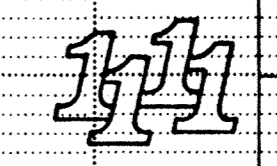
NOTE: LOCATION OF DRIVEWAY APRONS TO BE DETERMINED BY ENGINEER IN THE FIELD

1ST STREET



I hereby certify that this plan, specification, or report was prepared by me or under my direct supervision and that I am a duly Registered Professional Engineer under the laws of the State of Minnesota.

MEYER-ROHLIN, INC.
ENGINEERS-LAND SURVEYORS
111 Hwy. 25N, Buffalo, Minn. 55313



REVISIONS	

VERNON ESTATES
Plan & Profile
1ST STREET
ELK RIVER, MINNESOTA

DESIGNED BY C.R.E.	DRAWN BY C.R.E.	CHECKED BY J.P.M.	DATE	FILE NO. 5-36136
-----------------------	--------------------	----------------------	------	---------------------

State Proj. No.

Sheet No. of Sheets