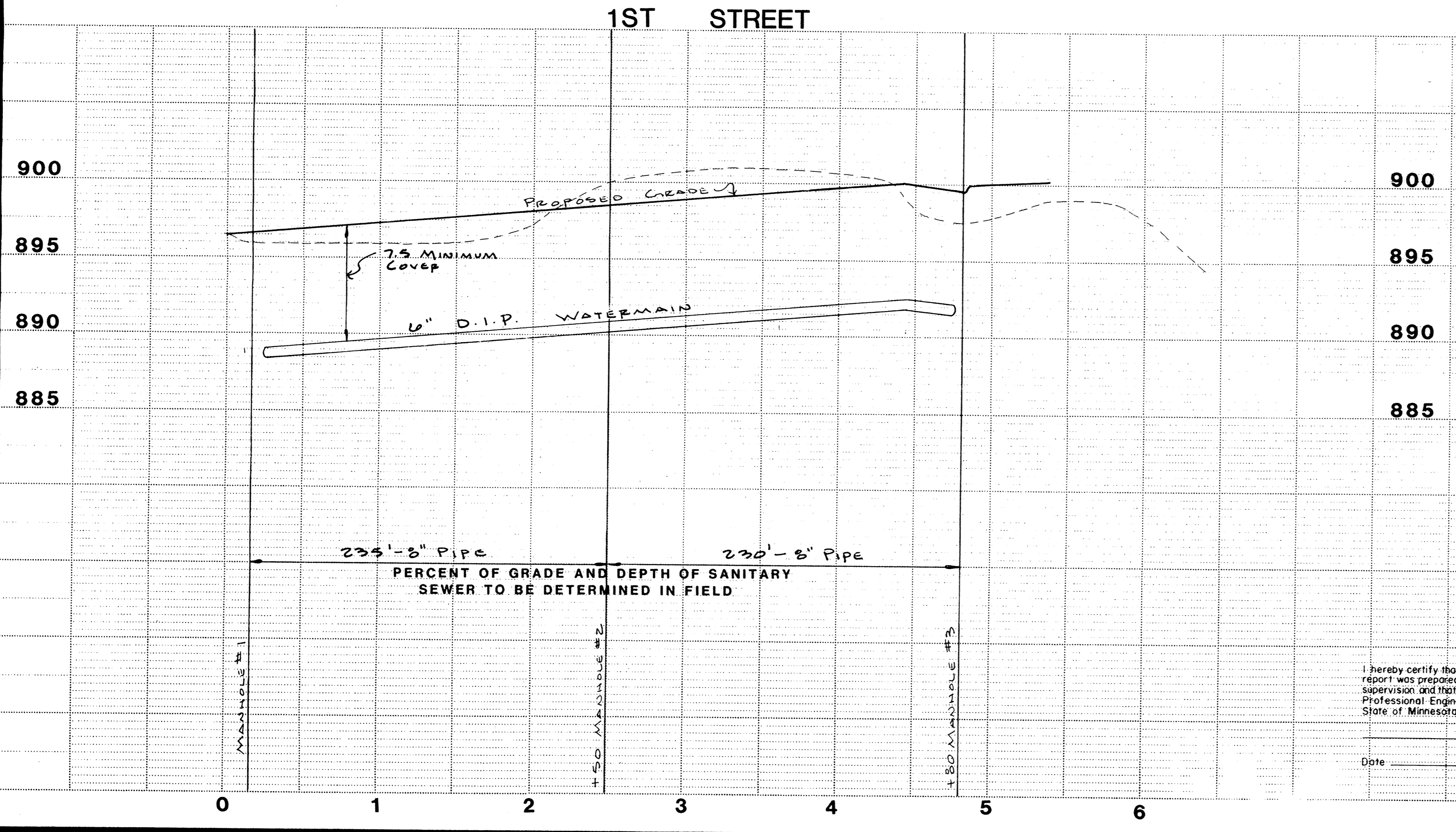
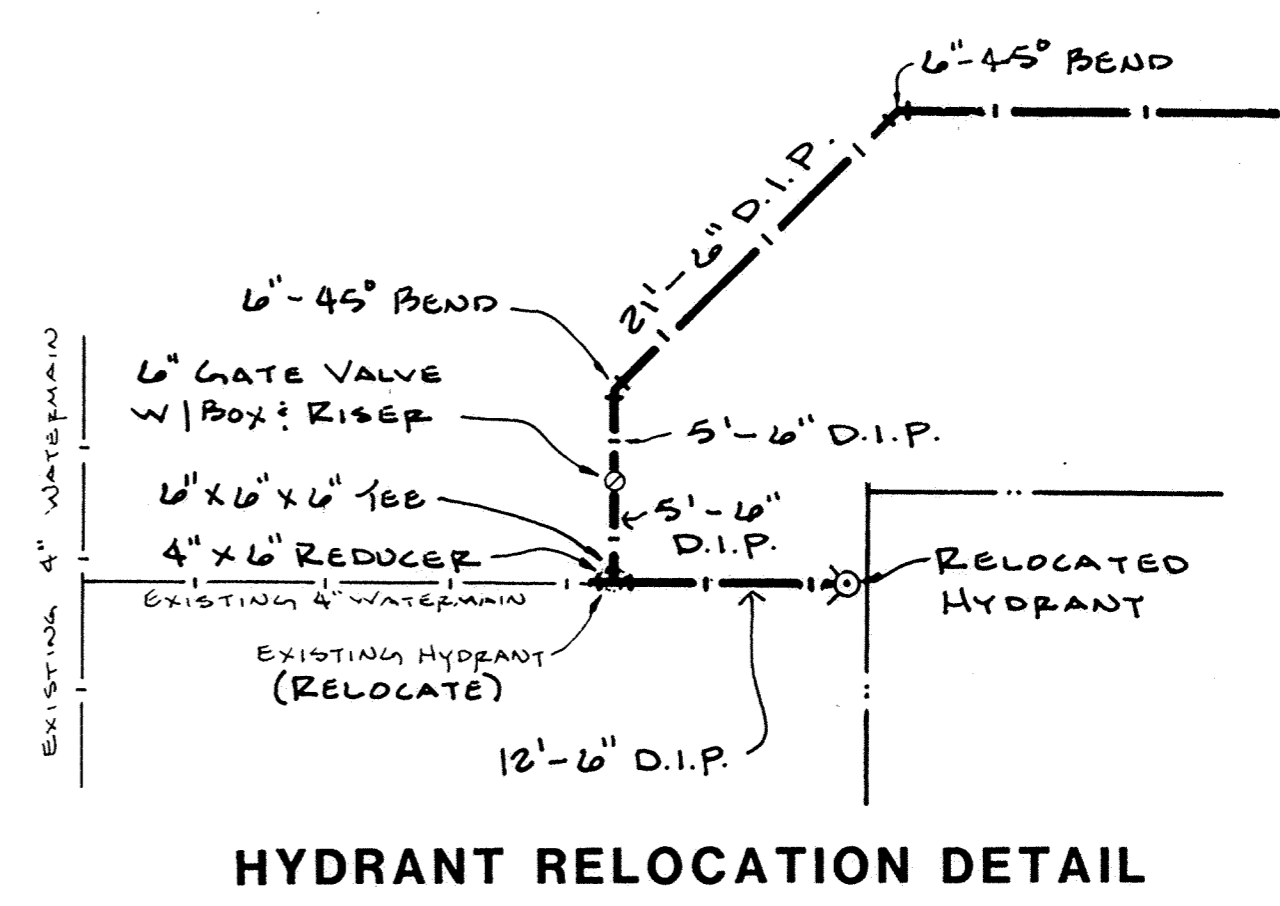
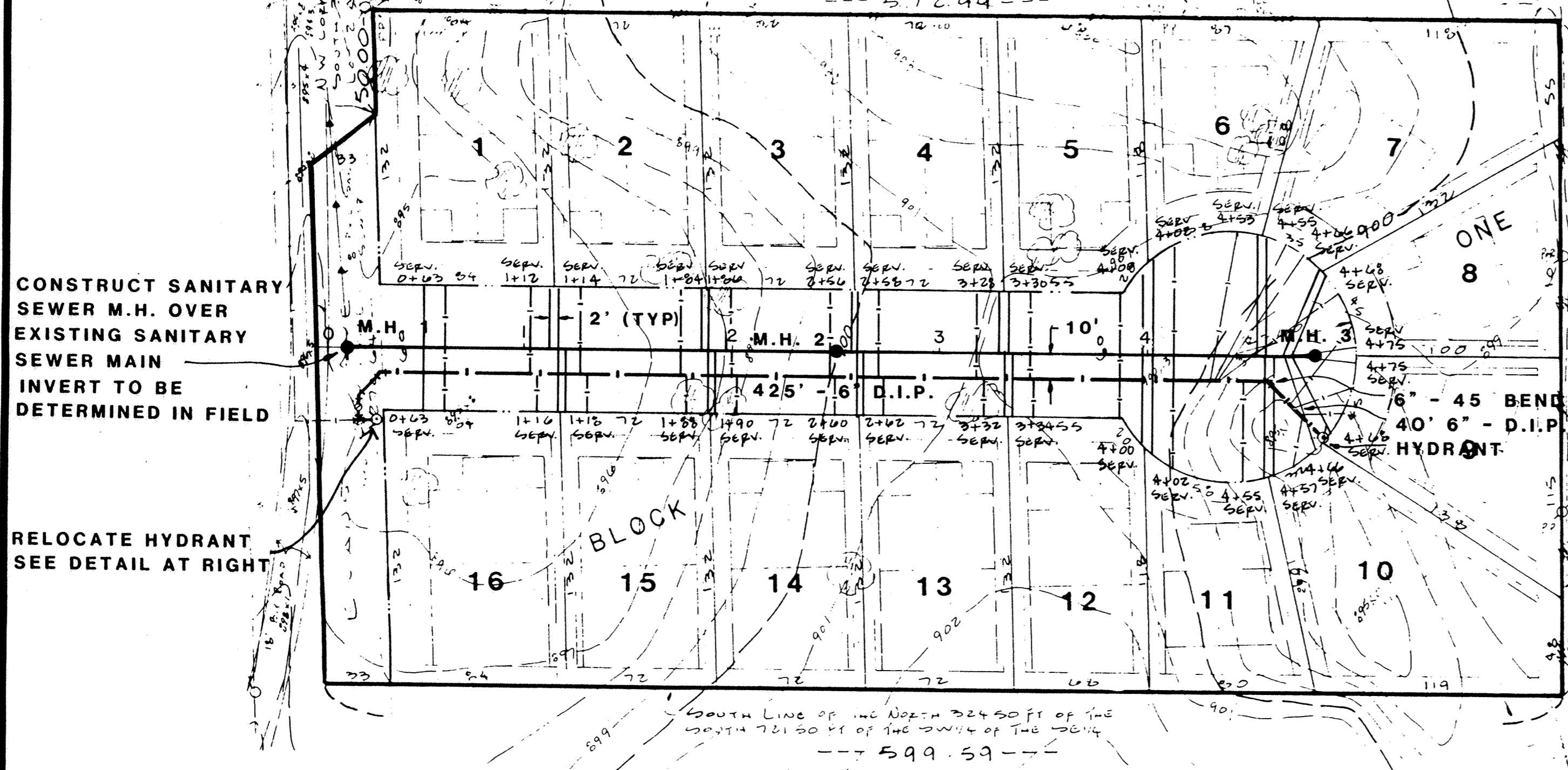


- NOTES:
1. All stations for services as shown on plans are to sanitary sewer service wyes.
  2. All sanitary sewer services are to be 4" PVC. All water services are to be 1" (Type K) Cu tubing.



I hereby certify that this plan, specification, or report was prepared by me or under my direct supervision and that I am a duly Registered Professional Engineer under the laws of the State of Minnesota.

Date \_\_\_\_\_ Reg. No. \_\_\_\_\_

<b>MEYER-ROHLIN, INC.</b> ENGINEERS, LAND SURVEYORS 111 Hwy. 26N, Buffalo, Minn. 55313		REVISIONS SCALE HORIZ. 1"=50' VERT. 1"=5' BOOK 155 PAGE 32	VERNON ESTATES UTILITY PLAN 88D STREET ELK RIVER, MINNESOTA	FILE NO. 5-86130
DESIGNED BY CSE	DRAWN BY CSE	CHECKED BY JPM	DATE	SHEET 2 OF 4 SHEETS

Copy Equipment Form #2