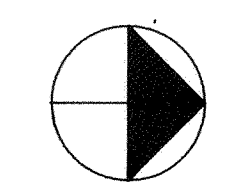
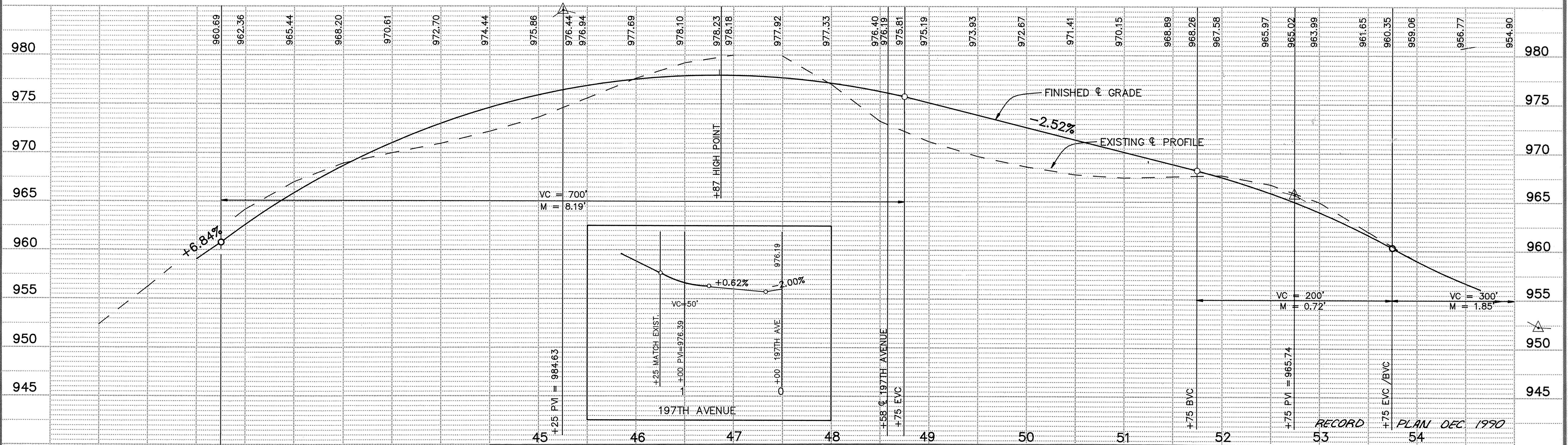
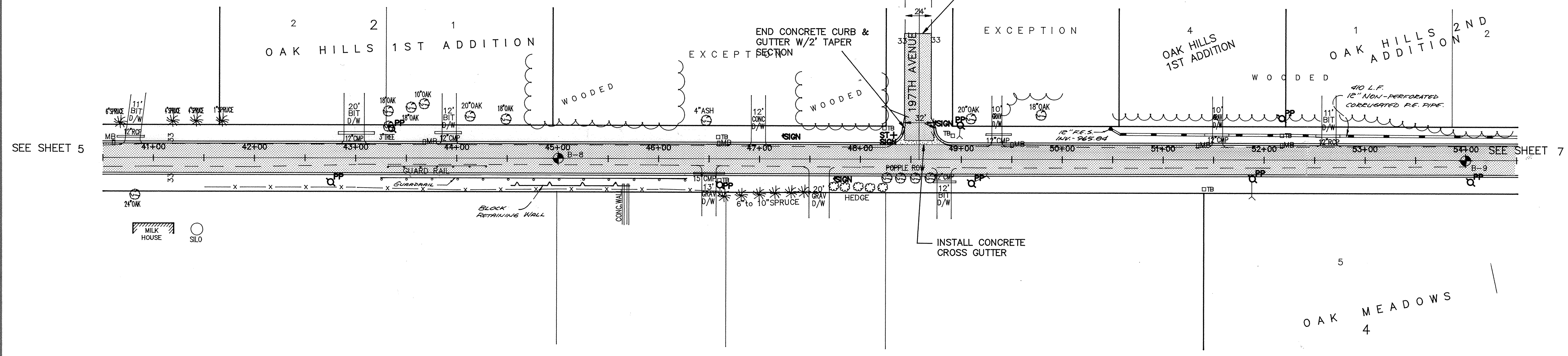


# TYLER STREET



**NOTE**  
MATCH POINT MOVED WEST TO 3+50  
FROM TYLER & TO REMOVE CREST FROM HILL.  
STRAIGHT LINE CUT, TACK &  
MATCH EXISTING BITUMINOUS



I HEREBY CERTIFY THAT THIS PLAN, SPECIFICATION OR REPORT WAS PREPARED BY ME OR UNDER MY DIRECT SUPERVISION AND THAT I AM A DULY REGISTERED PROFESSIONAL ENGINEER UNDER THE LAWS OF THE STATE OF MINNESOTA.

**Maier Stewart & Associates Inc.**  
CONSULTING ENGINEERS  
1959 SLOAN PLACE (612)774-6021 ST. PAUL, MINNESOTA 55117

DATE	DESCRIPTION	DESIGNED
7/5/89	STREET GRADES	CHECKED
		DRAWN
		GRAPHIC SCALE
		VERT. 5

**CITY OF ELK RIVER**  
STREET IMPROVEMENTS  
TYLER STREET  
SAP 204-114-01

DATE APRIL, 1989 SHEET 6 OF 22 SHEETS PROJECT NO. 230-063