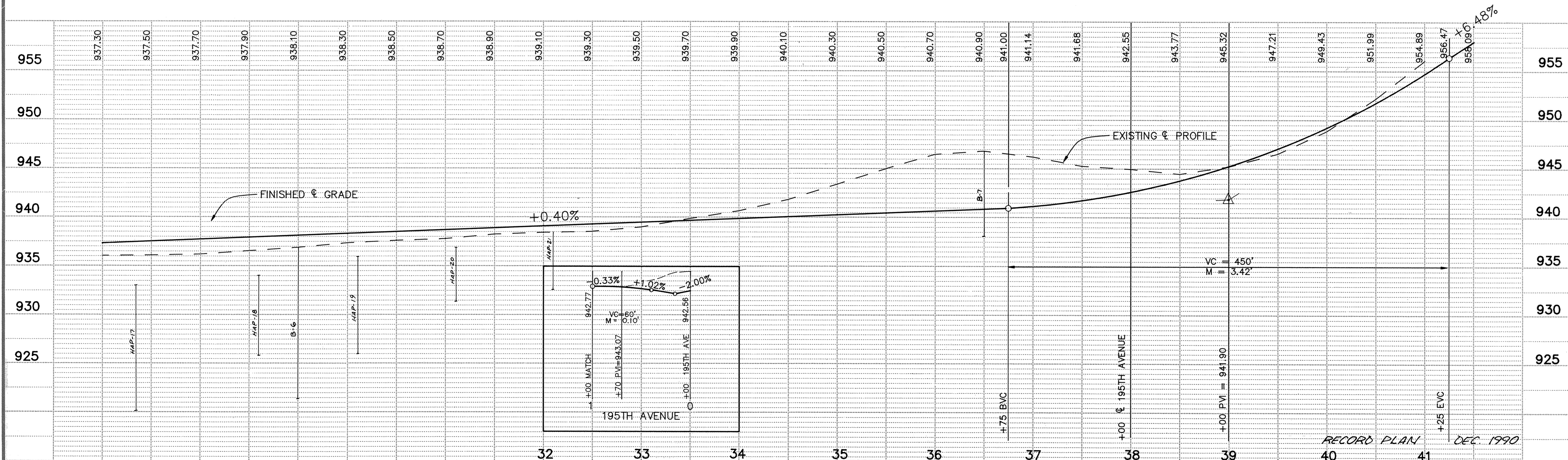
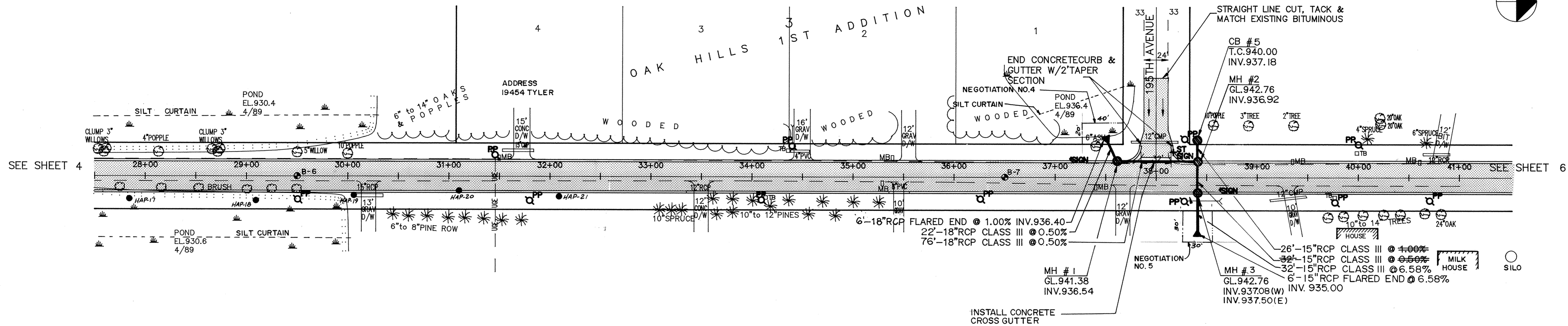


TYLER STREET



I HEREBY CERTIFY THAT THIS PLAN, SPECIFICATION, OR REPORT WAS PREPARED BY ME OR UNDER MY DIRECT SUPERVISION AND THAT I AM A DULY REGISTERED PROFESSIONAL ENGINEER UNDER THE LAWS OF THE STATE OF MINNESOTA.
Larry J. Mauser
 DATE 5/1/89 REG. NO. 15316

MSA CONSULTING ENGINEERS
Maier Stewart & Associates Inc.
 1959 SLOAN PLACE (612) 774-6021 ST. PAUL, MINNESOTA 55117

DATE	DESCRIPTION	DESIGNED	CHECKED

DRAWN 9/2
 GRAPHIC SCALE
 HORIZ. 50
 VERT. 5

CITY OF ELK RIVER
 STREET IMPROVEMENTS
 TYLER STREET
 SAP 204-114-01
 DATE APRIL, 1989 SHEET 5 OF 22 SHEETS PROJECT NO. 230-063

DRAWING NUMBER
 TYLER 90
 SA
 DRAWING NUMBER
 TYLER 90
 SA
 DRAWING NUMBER
 TYLER 90
 SA