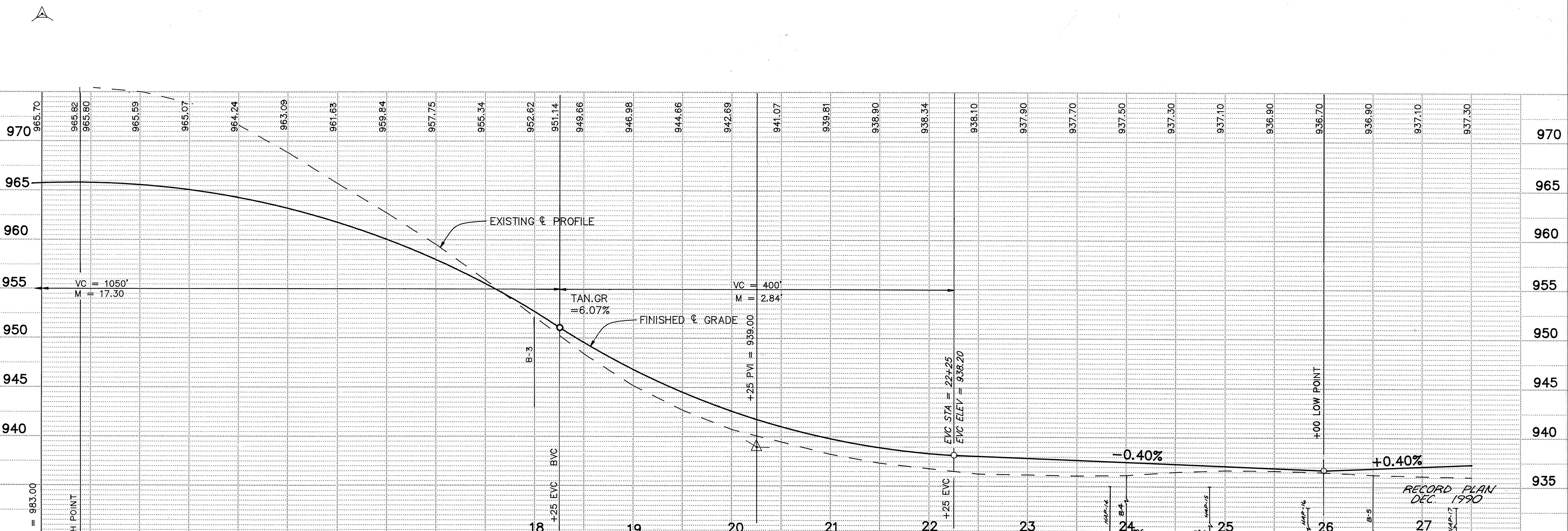
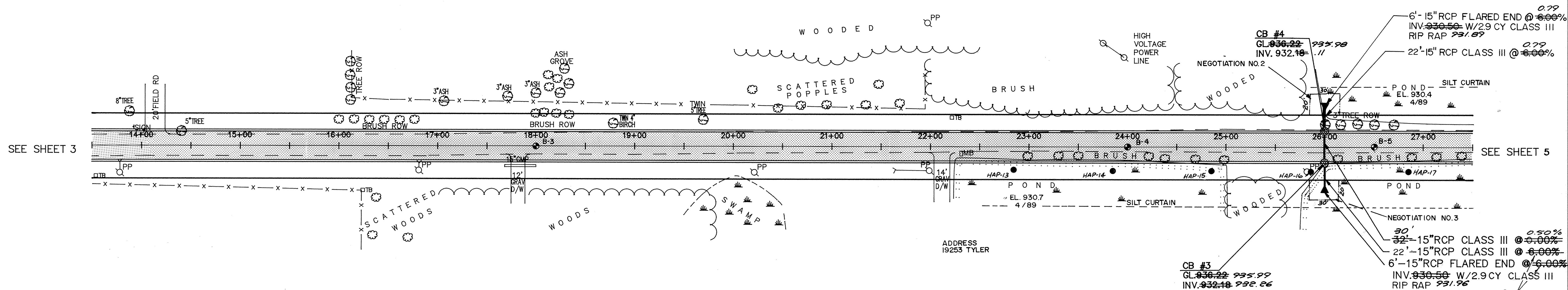
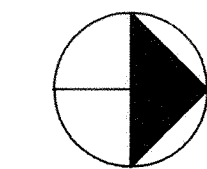


# TYLER STREET



I HEREBY CERTIFY THAT THIS PLAN, SPECIFICATION, OR REPORT WAS PREPARED BY ME OR UNDER MY DIRECT SUPERVISION AND THAT I AM A DULY REGISTERED PROFESSIONAL ENGINEER UNDER THE LAWS OF THE STATE OF MINNESOTA.

*Erny J. Mease*  
 DATE 5/1/89 REG. NO. 15316

**MSA** CONSULTING ENGINEERS  
**Maier Stewart & Associates Inc.**  
 1959 SLOAN PLACE (612) 774-6021 ST. PAUL, MINNESOTA 55117

REVISIONS	DATE	DESCRIPTION

DESIGNED \_\_\_\_\_  
 CHECKED \_\_\_\_\_  
 DRAWN *MS*  
 GRAPHIC SCALE  
 0' HORIZ. 50'  
 0' VERT. 5'

CITY OF ELK RIVER  
 STREET IMPROVEMENTS  
 TYLER STREET  
 S.A.P. 204-114-01

DATE APRIL, 1989 SHEET 4 OF 22 SHEETS PROJECT NO. 230-063

ER063-2

355

DRAWING NUMBER

DRAWING NUMBER

DRAWING NUMBER

DRAWING NUMBER  
 TYLER 90  
 4