

# CITY OF ELK RIVER

## SECTIONS 23 & 25, T33N, R26W

### STORM SEWER & STREET CONSTRUCTION

#### TYLER STREET

# M.S.A.S. 204-114-01

#### PLAN SYMBOLS

- SECTION LINE
- QUARTER LINE
- SIXTEENTH LINE
- RIGHT OF WAY LINE
- PROPERTY LINE
- CENTER LINE
- FENCE LINE
- RIVER OR CREEK
- LAKE OR POND
- CULVERT
- BRIDGE
- RETAINING WALL

- TREES
- BRUSH OR SHRUBS
- HEDGE
- CONIFERS
- SWAMP
- MAILBOX
- SIGN

#### UTILITIES SYMBOLS

- SANITARY SEWER
- STORM SEWER
- WATERMAIN
- GAS LINE
- POWER LINE
- MANHOLE
- CATCH BASIN
- VALVE

- HYDRANT
- POWER, TELEPHONE, OR LIGHT POLE
- ANCHOR
- SOIL BORING LOCATION

PRESENT ADT (1987) 700 PROJ. ADT (2007) 1050

SHOULDER WIDTH \_\_\_\_\_

\_\_\_\_\_ 9 TON TON DESIGN

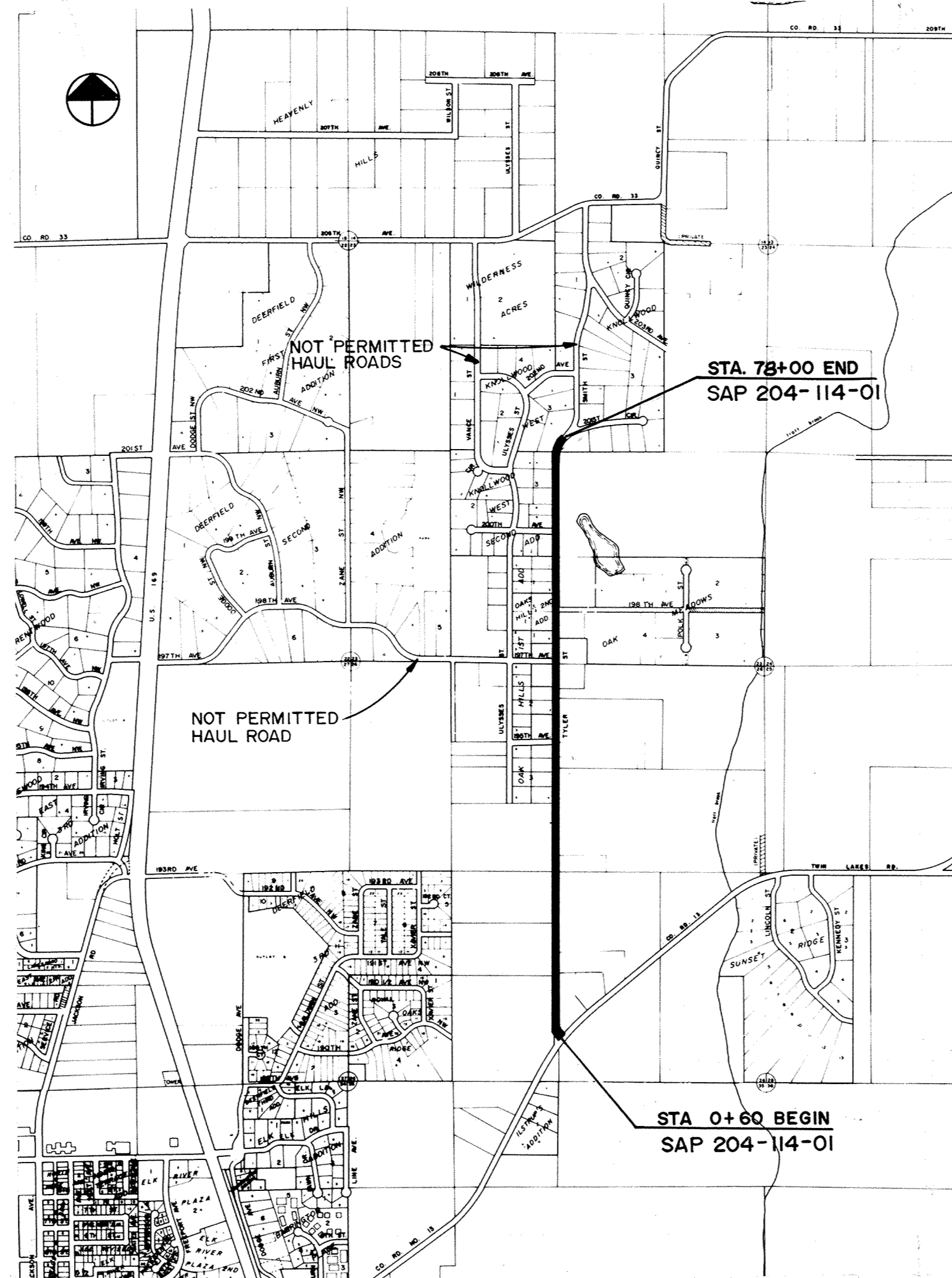
SOIL FACTOR 75 PROJ. HCDT (2007) 62

R-VALUE \_\_\_\_\_ N <sup>OR</sup> <sub>18</sub> FACTOR \_\_\_\_\_

DESIGN SPEED 40 MPH  
 DESIGN SPEED NOT ACHIEVED AT:  
 STA. 3+75 TO STA. 7+75 35 MPH  
 STA. 73+00 TO STA. 78+00 30 MPH  
 STOP CONDITION AT COUNTY ROAD 13

STOPPING SITE DISTANCE BASED ON:  
 3.5' HEIGHT OF EYE  
 0.5' HEIGHT OF OBJECT

FUNCTIONAL CLASSIFICATION:  
 LOW DENSITY COLLECTOR  
 2 TRAFFIC LANES  
 0 PARKING LANES



BETWEEN CO. RD. NO. 13	AND CO. RD. NO. 33			
GROSS LENGTH	7740	FEET	1.47	MILES
BRIDGES LENGTH	0	FEET	0	MILES
EXCEPTION LENGTH	0	FEET	0	MILES
NET LENGTH	7740	FEET	1.47	MILES

PLAN 1" = 50'

SCALES: PROFILE HOR. 1" = 50'  
 VERT. 1" = 5'

CROSS SECTIONS HOR. 1" = 10'  
 VERT. 1" = 5'

#### INDEX OF SHEETS

- 1 TITLE SHEET & LAYOUT MAP
- 2 EST. QUANTITY, STREET SECTIONS & NOTES
- 3-8 PLAN AND PROFILE
- 9-21 CROSS SECTIONS
- 22 DETAILS

I HEREBY CERTIFY THAT THIS PLAN, SPECIFICATION, OR REPORT WAS PREPARED BY ME OR UNDER MY DIRECT SUPERVISION AND THAT I AM A DULY REGISTERED PROFESSIONAL ENGINEER UNDER THE LAWS OF THE STATE OF MINNESOTA.

*Tony J. Maurer*  
 DATE 5/1/89 REG. NO. 15316

APPROVED *Tony J. Maurer* CITY ENGINEER 5/1/89 DATE

RECOMMENDED FOR APPROVAL *D. O. Reed* DISTRICT STATE AID ENGINEER 5-31-89 DATE

RECOMMENDED FOR APPROVAL *Janice Skellman* STATE PLANS & SPEC. ENGINEER 6/30/89 DATE

APPROVED 6/30/1989 1985 *William H. Gray* STATE AID DIRECTOR DATE