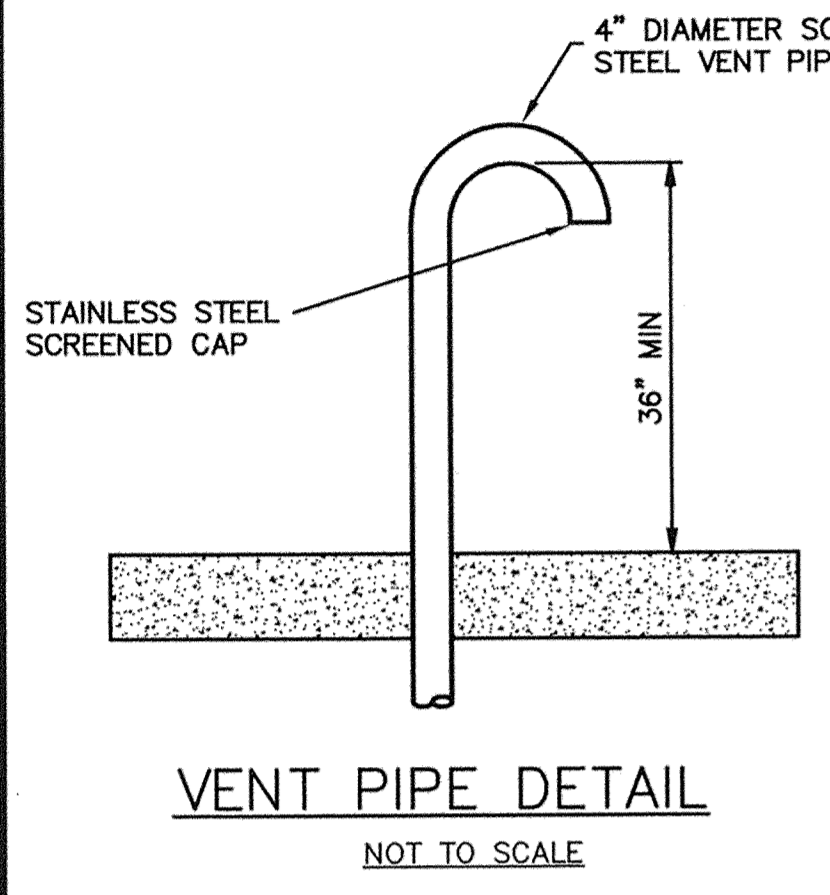


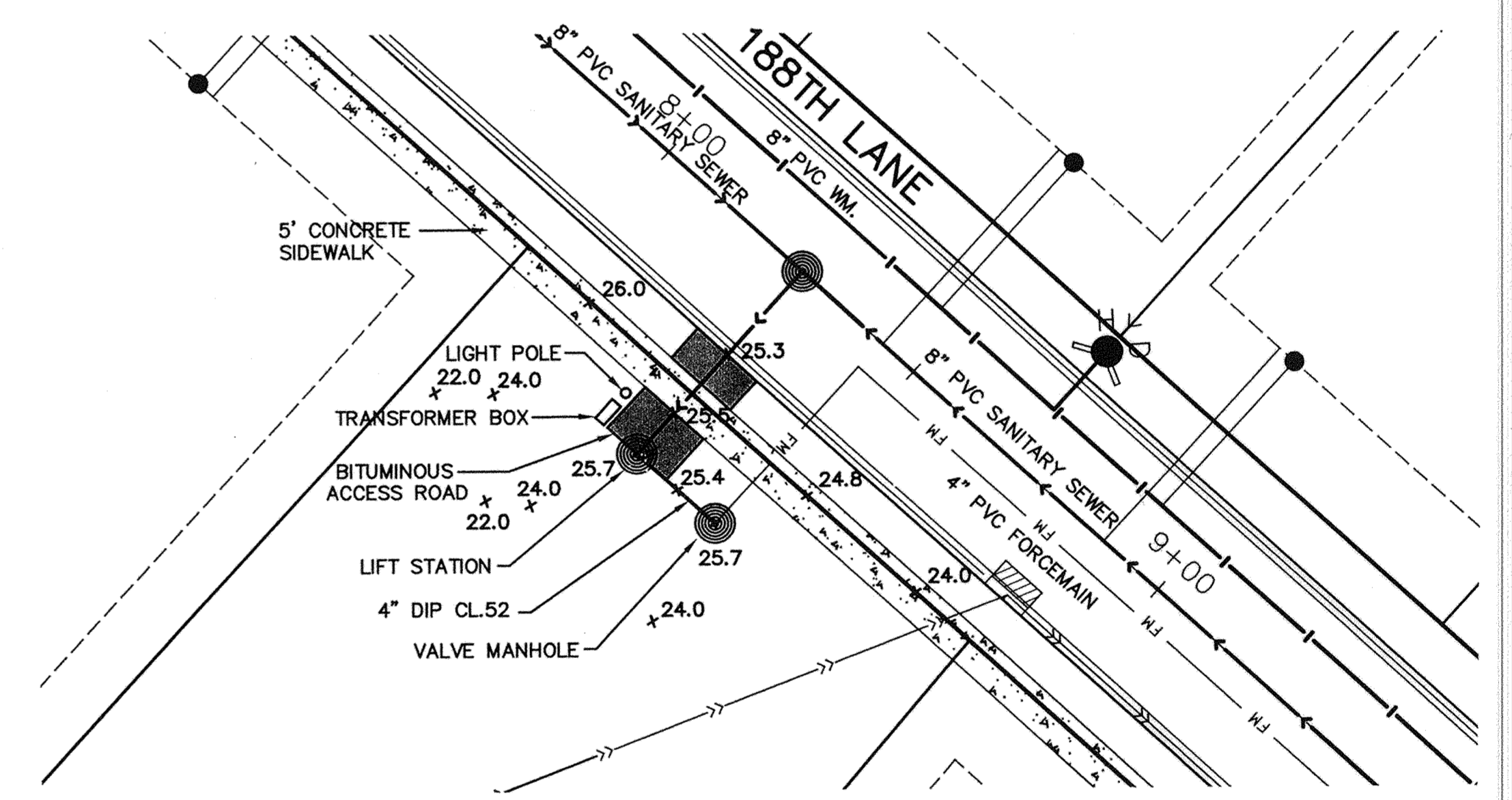
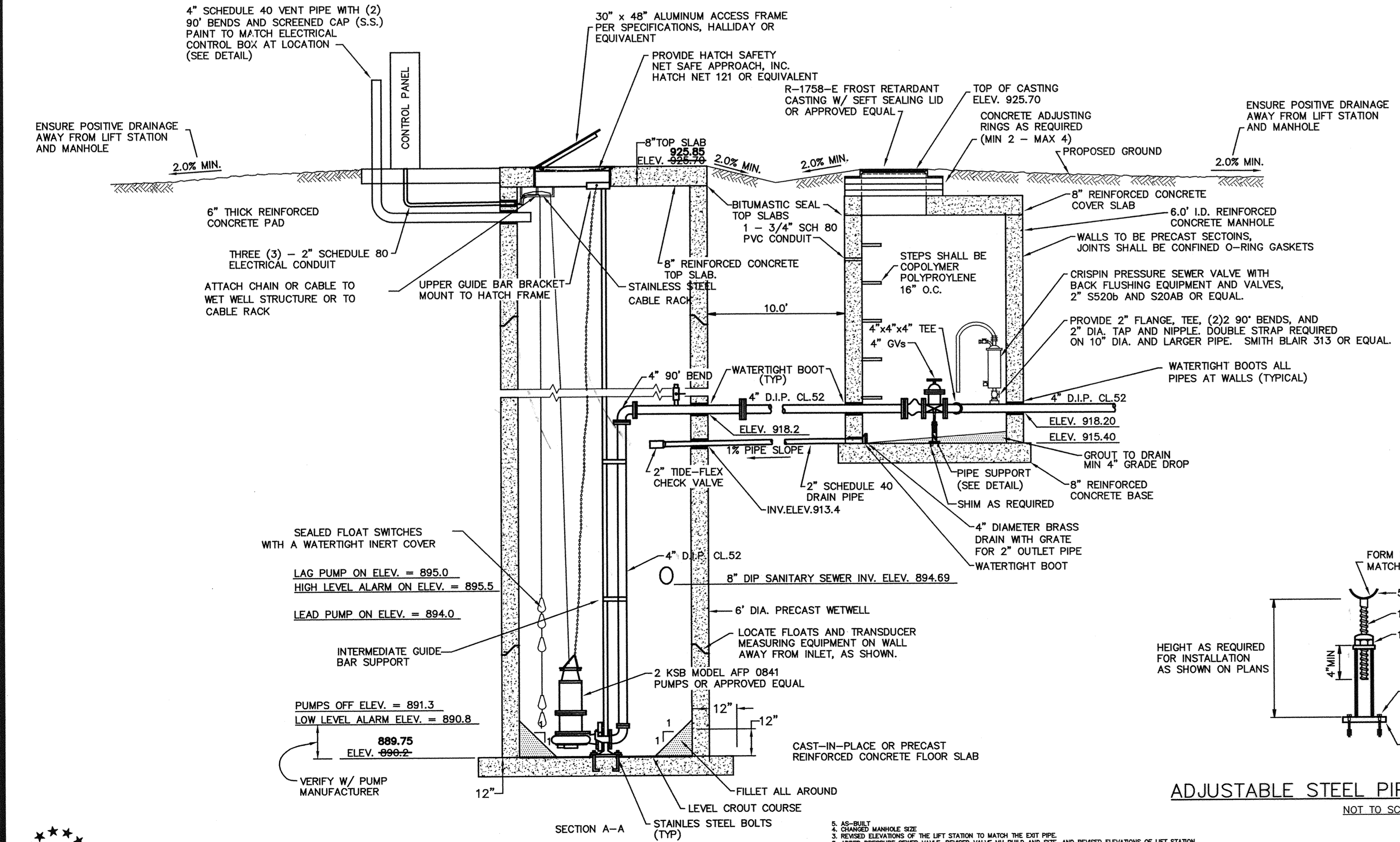
- NOTES:
- PRECAST CONCRETE STRUCTURES, BASE SLABS AND TOP SLABS SHALL BE CONSTRUCTED ACCORDING TO APPLICABLE MNDOT SPECIFICATIONS AND AS SHOWN. DESIGN OF WET WELL BASE SLAB SHALL BE SUBMITTED TO THE CITY FOR REVIEW AND APPROVAL PRIOR TO CONSTRUCTION.
  - THE CONTRACTOR SHALL COORDINATE THE LOCATION OF THE TRANSDUCER AND ALARM FLOAT WITH THE ENGINEER IN THE FIELD.
  - ANCHOR BOLTS SHALL BE PER PUMP MANUFACTURER'S SPECIFICATIONS.
  - SAFETY RAIL SHALL BE 2" DIA. STEEL, PAINTED PER SPECIFICATIONS. RAIL SHALL BE SIZED TO FIT ACCESS DOOR OPENING AS REQUIRED.
  - GUARD POSTS FOR ELECTRIC TRANSFORMER SHALL BE 6" DIA. STEEL POSTS, PAINTED PER SPECIFICATIONS. POSTS SHALL BE SET IN CONCRETE, MINIMUM 6" AROUND POSTS.
  - LOCATION OF PUMPS AND ACCESSORIES SHALL BE IN ACCORDANCE TO THE PUMP MANUFACTURER'S SPECIFICATIONS.
  - THE BOTTOM SLAB ELEVATION OF THE WETWELL MAY VARY DEPENDING ON THE TYPE OF PUMP CHOSEN.
  - SEE SHEET 16 FOR ELECTRICAL PLAN.
  - CONCRETE PAD FOR CONTROL PANEL SHALL BE SIZED TO PROVIDE ADEQUATE CLEARANCE FROM RAILING TO PANEL, AND TO MEET MANUFACTURER'S RECOMMENDATION.

- NOTES:
1. ADJUSTABLE STEEL PIPE SUPPORTS SHALL BE PROVIDED FOR THE TWO GATE VALVES.
  2. LOCATION AND MOUNTING ARRANGEMENT OF PUMP BASES SHALL BE PER MANUFACTURER'S RECOMMENDATIONS.
  3. ALL CLAMPS, NUTS, BOLTS, MOUNTING BRACKETS, ETC. SHALL BE STAINLESS STEEL.
  4. RESTORE ALL DISTURBED AREAS WITH 4" OF SALVAGED TOPSOIL AND SEED.

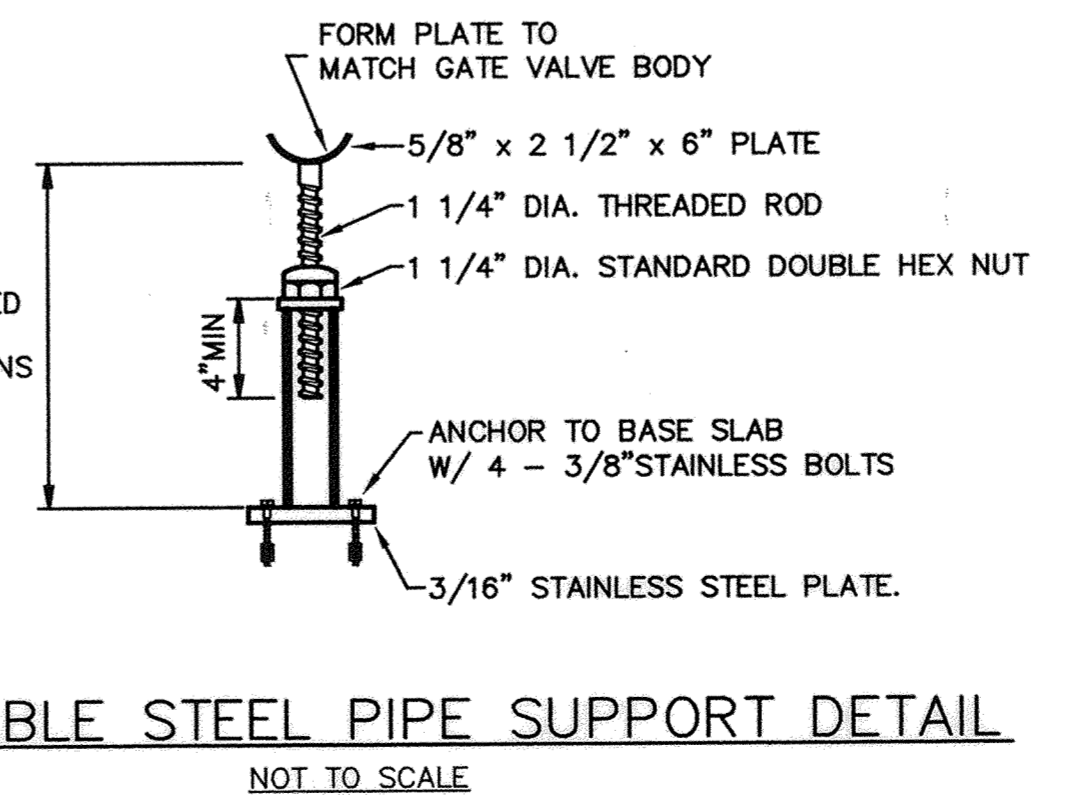


VENT PIPE DETAIL  
NOT TO SCALE

NOTE: CONTRACTOR TO VERIFY HATCH OPENING SIZE AND PUMP RAIL SPACING WITH PUMP SUPPLIER



SITE PLAN  
GRAPHIC SCALE IN FEET



ADJUSTABLE STEEL PIPE SUPPORT DETAIL  
NOT TO SCALE

RECORD PLAN 2005  
CONTRACTOR  
RYAN CONTRACTING  
8700 13TH AVE.  
SHAKOPEE, MN  
(952) 894-3200

**PIONEER engineering**  
201 85th Avenue NE  
Coon Rapids, MN 55433  
(763) 783-1882 FAX: 783-1883  
2422 Enterprise Drive  
Maple Heights, MN 55120  
(651) 681-3614 FAX: 681-3488

I hereby certify that this plan was prepared by me or under my direct supervision and that I am a duly Licensed Professional Engineer under the laws of the State of Minnesota.

Name Paul J. Chaffin  
Reg. No. 19890 Date 7/16/04

Revisions  
1. 8/27/04  
2. 9/23/04  
3. 10/18/04  
4. 10/19/04

Date 7/16/04  
Designed C.J.H.  
Drawn C.J.H.

OWNER  
**RYAN CONTRACTING CO.**  
8700 13TH AVENUE EAST  
SHAKOPEE, MINNESOTA 55379

PROJECT  
**TWIN LAKES ESTATES**  
ELK RIVER, MINNESOTA

SHEET **24** OF **24** SHEETS

RECORD PLAN 2005