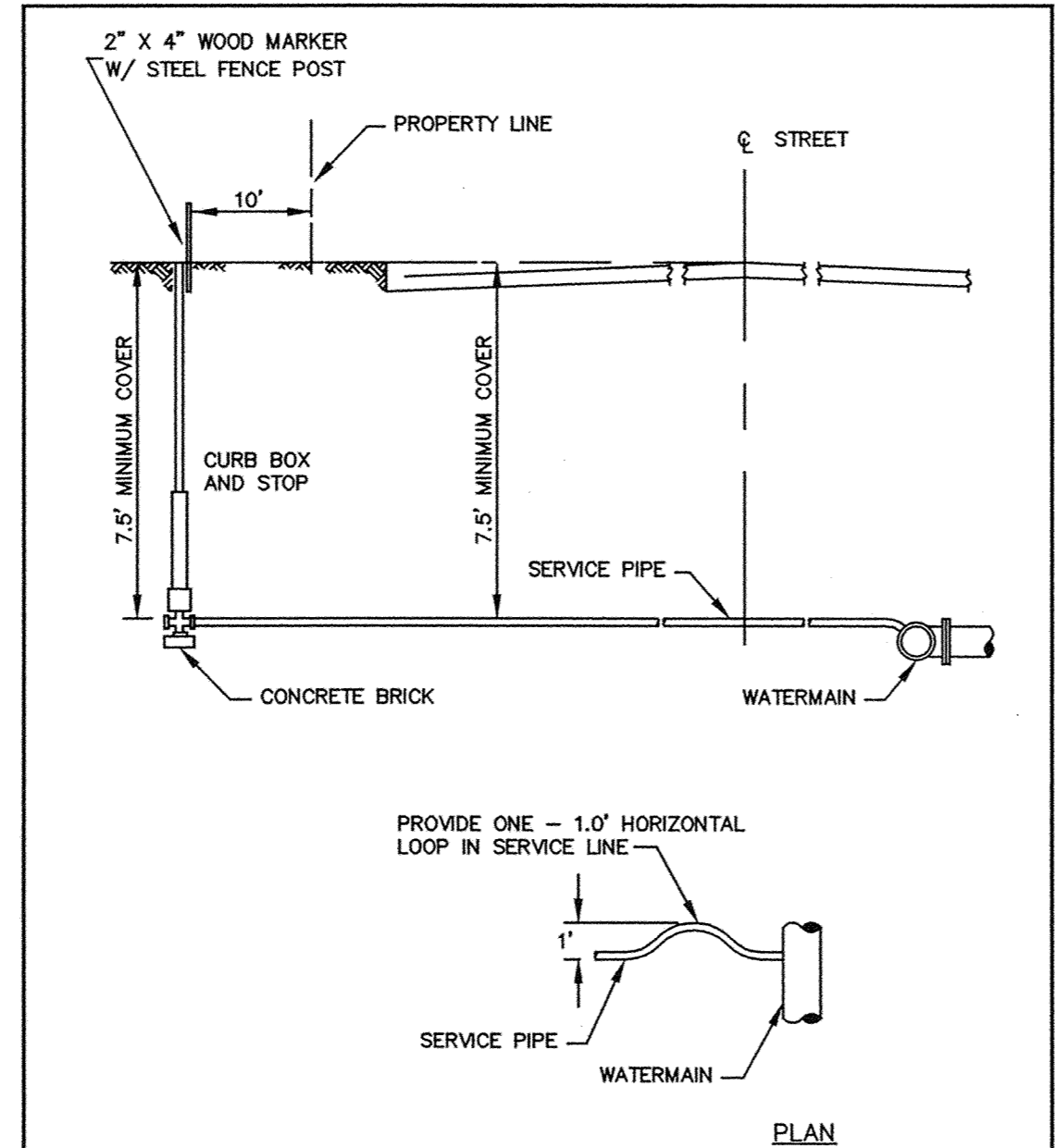
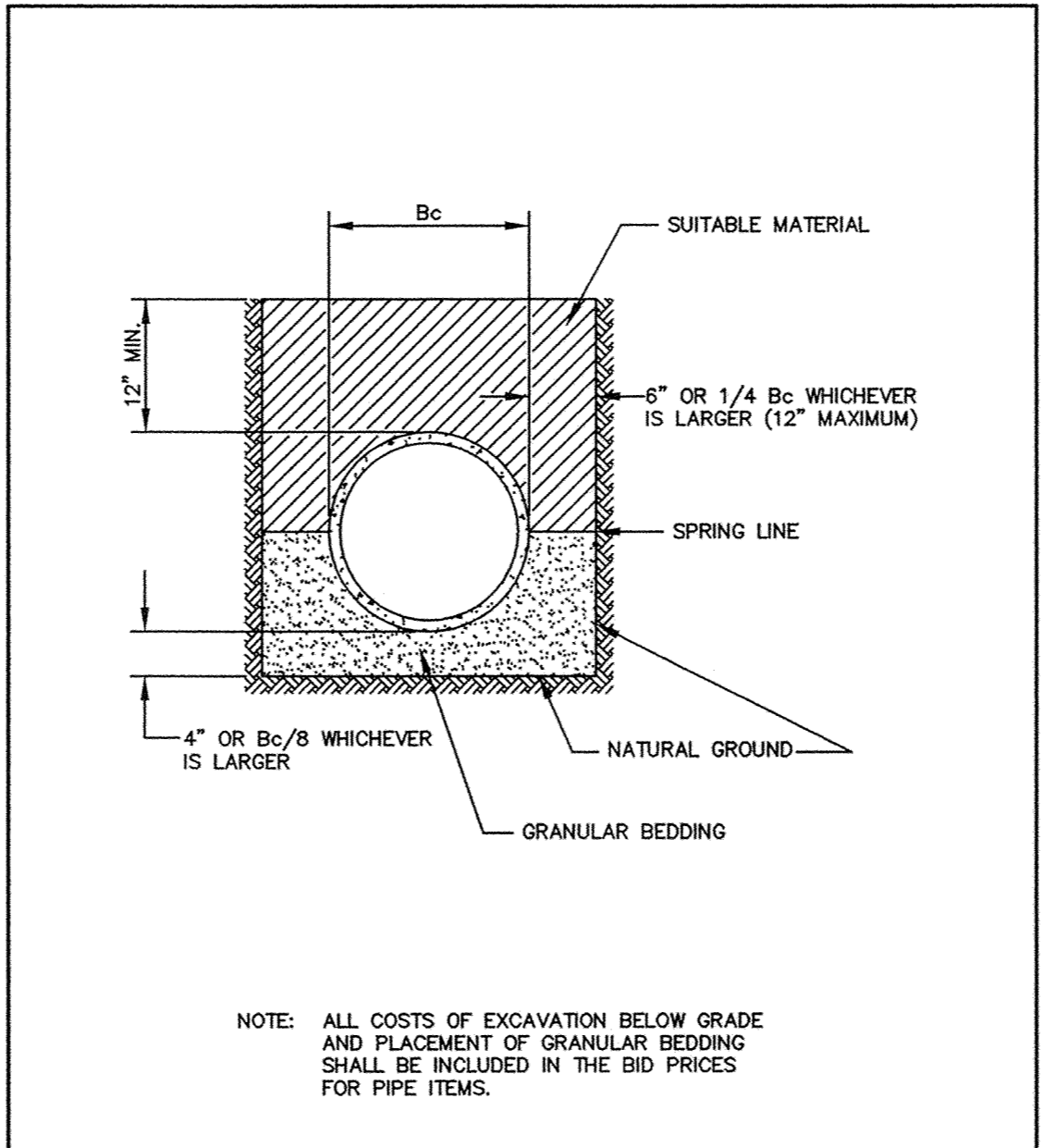


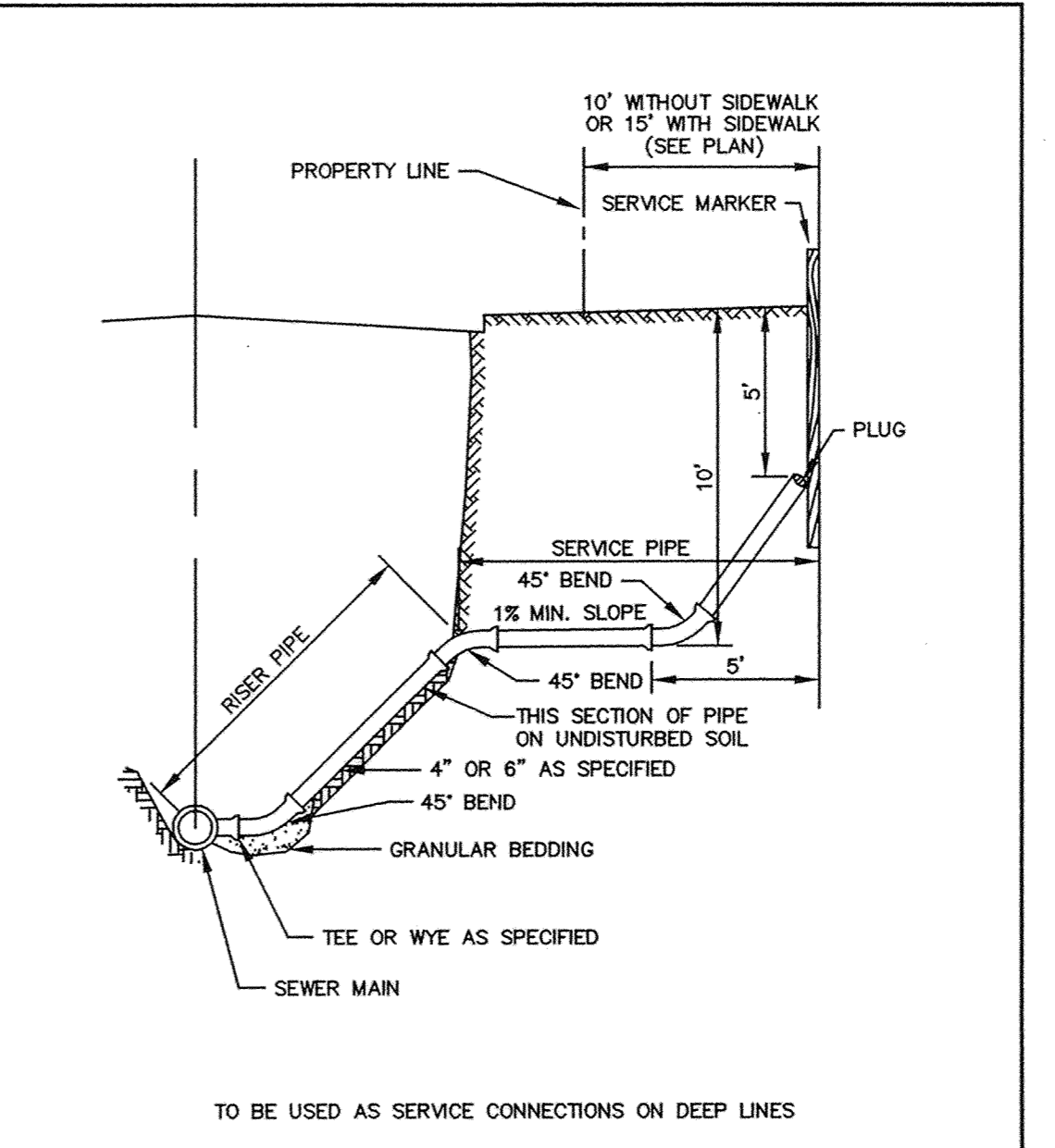
ERSTD-WM  
**RODDING DETAIL**  
 City of Elk River  
 STANDARD PLATE NO. 3402



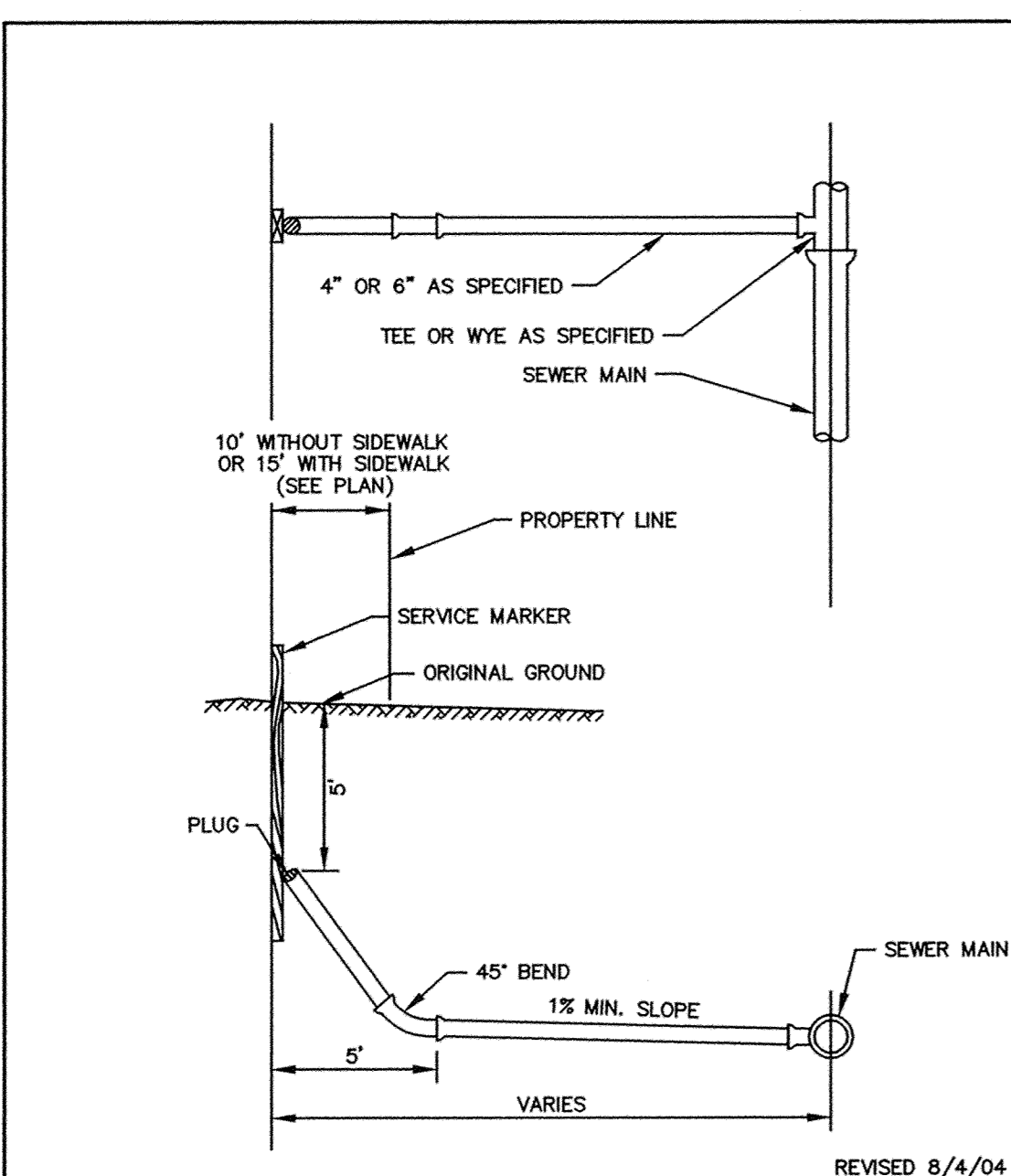
ERSTD-WM  
**TYPICAL SERVICE DETAIL**  
 City of Elk River  
 STANDARD PLATE NO. 3403



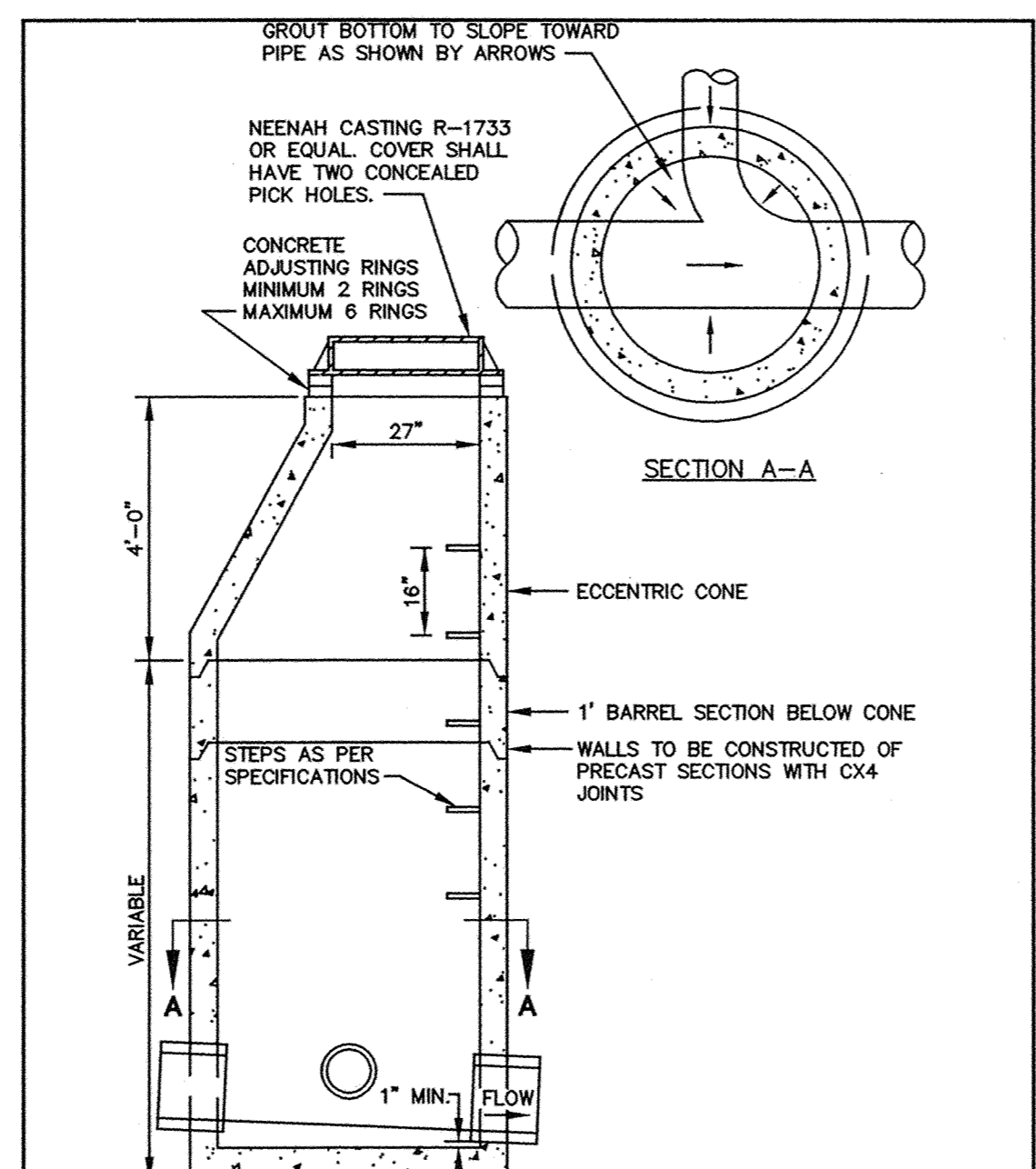
ERSTD-SA  
**CLASS B PIPE BEDDING**  
 City of Elk River  
 STANDARD PLATE NO. 4006



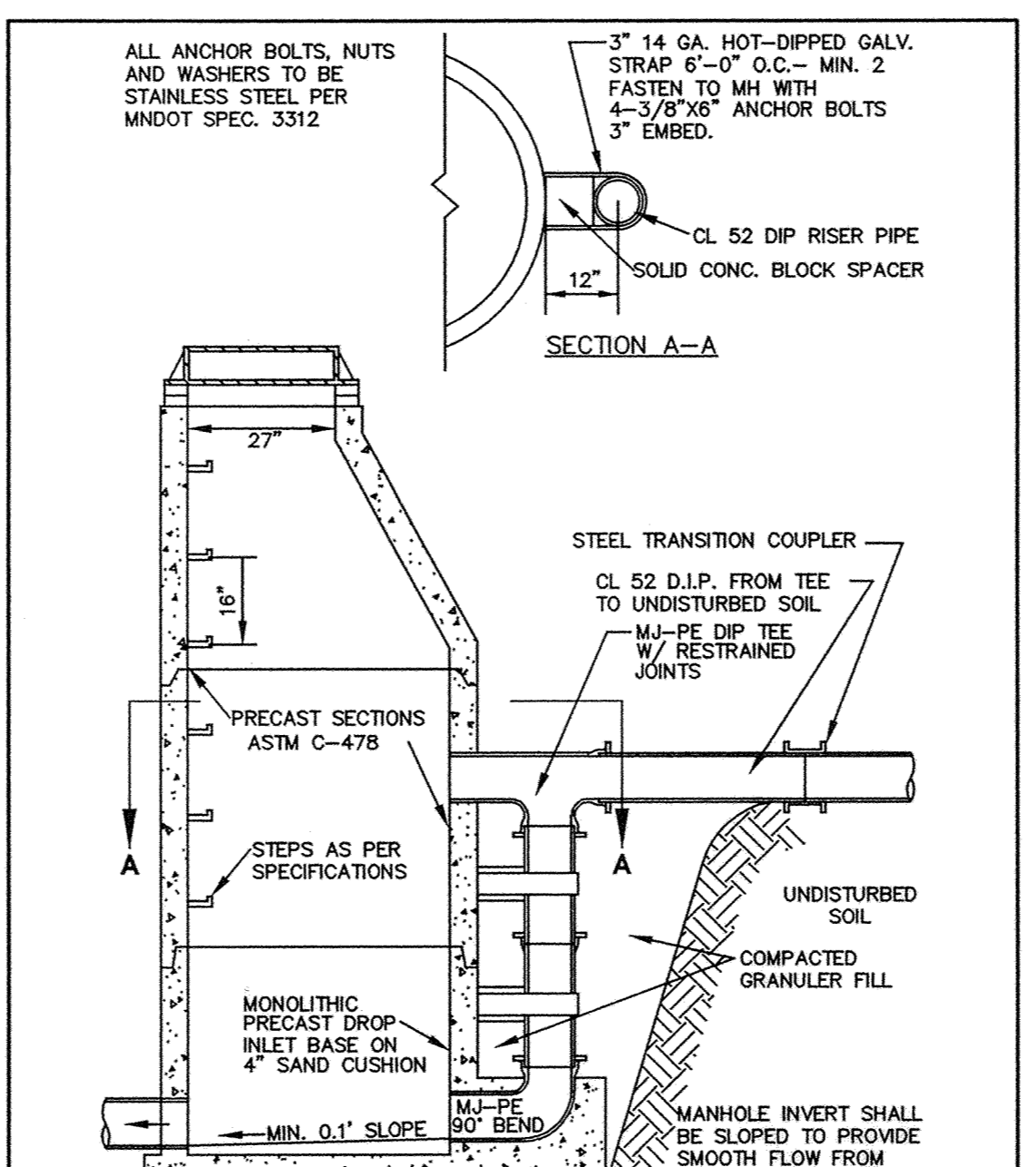
ERSTD-SA  
**SERVICE RISER SECTION**  
 City of Elk River  
 STANDARD PLATE NO. 4008



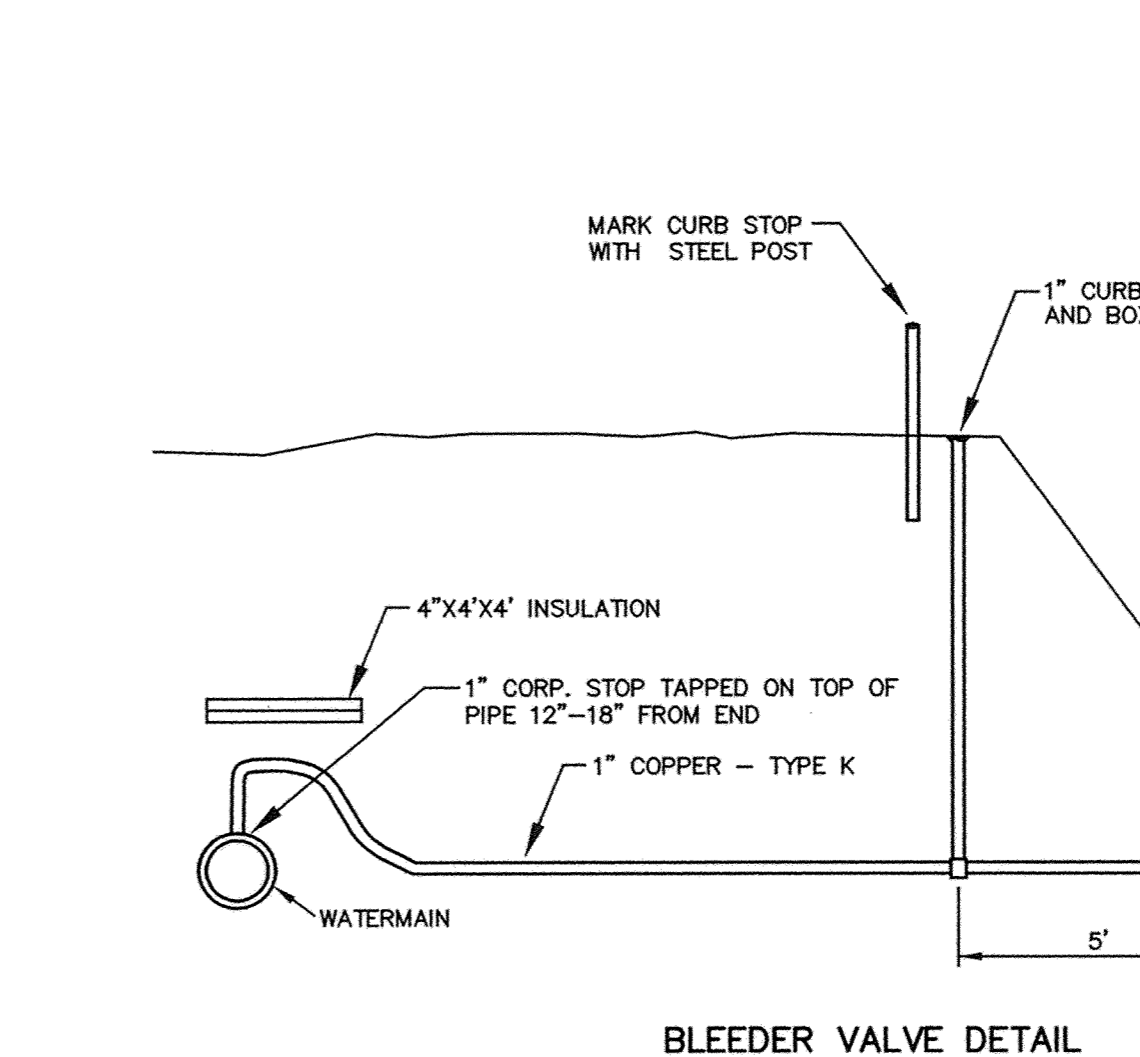
ERSTD-SA  
**TYPICAL HOUSE SERVICE**  
 City of Elk River  
 STANDARD PLATE NO. 4007



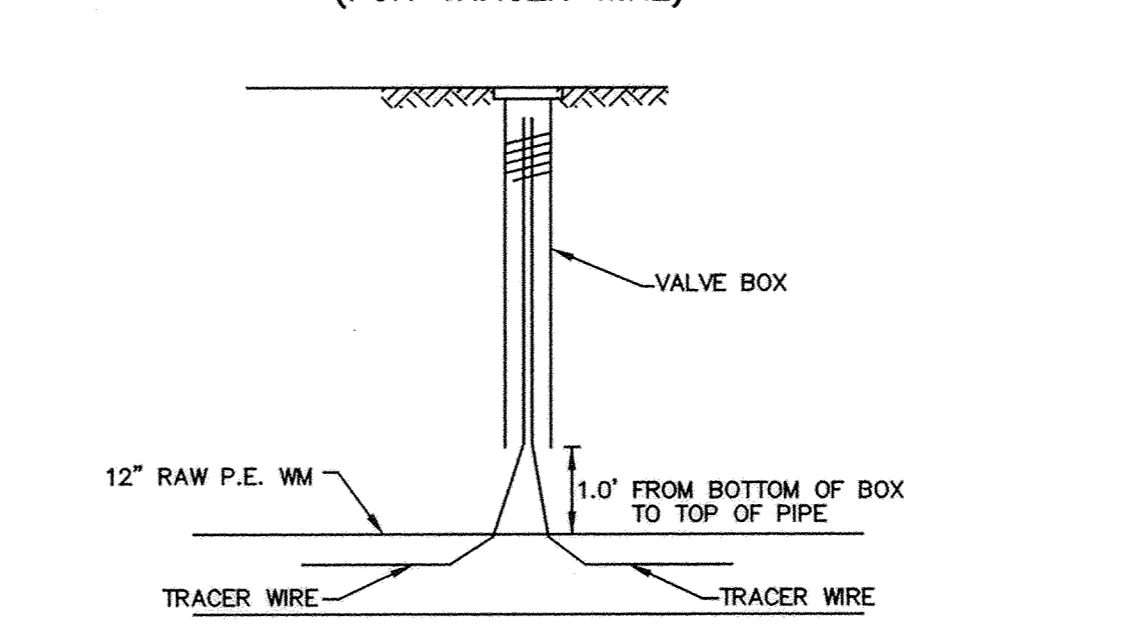
ERSTD-SA  
**STANDARD MANHOLE**  
 City of Elk River  
 STANDARD PLATE NO. 4000



ERSTD-SA  
**OUTSIDE DROP MANHOLE**  
 City of Elk River  
 STANDARD PLATE NO. 4004



**BLEEDER VALVE DETAIL**



**VALVE BOX DETAIL (FOR TRACER WIRE)**

RECORD PLAN 2005  
 CONTRACTOR  
 RYAN CONTRACTING  
 8700 13TH AVE.  
 SHAKOPEE, MN  
 (952) 894-3200

RECORD PLAN 2005

I hereby certify that this plan was prepared by me or under my direct supervision and that I am a duly Licensed Professional Engineer under the laws of the State of Minnesota.

Name Paul J. Cherno  
 Reg. No. 19860 Date 7/16/04

3. AS-BUILT  
 2. ADDED VALVE BOX DETAIL  
 1. REVISE STANDARD PLATE NO. 4007 & 4008.  
 Revisions  
 1. 8/4/04  
 2. 8/27/04  
 3. xx/xx/xx

Date 7/16/04  
 Designed B.K.  
 Drawn

SHEET TITLE  
**DETAILS**

OWNER **RYAN CONTRACTING CO.**  
 8700 13TH AVENUE EAST  
 SHAKOPEE, MINNESOTA 55379

PROJECT **TWIN LAKES ESTATES**  
 ELK RIVER

SHEET 23 OF 24 SHEETS