

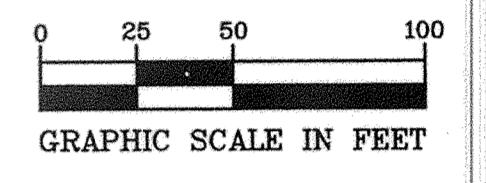
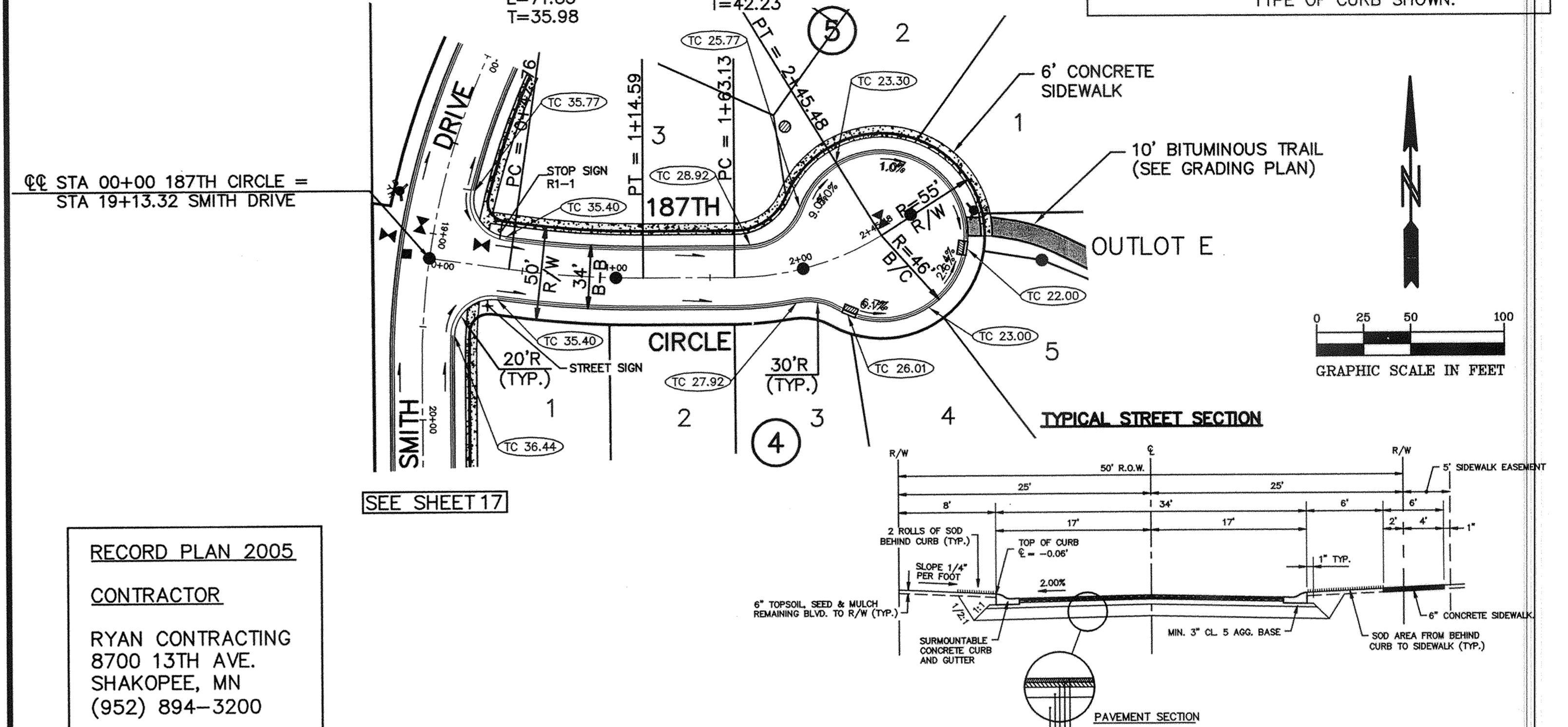
**BENCH MARKS**  
 CAST IRON MONUMENT: NORTHEAST CORNER OF SEC. 35, TWP. 33, RNG. 26. ELEVATION = 904.80  
 CAST IRON MONUMENT: NORTH QUARTER CORNER OF SEC. 35, TWP. 33, RNG. 26. ELEVATION = 935.67

**CURVE DATA**  
 $\Delta = 31'19'21''$   
 $R = 150.65$   
 $L = 82.36$   
 $T = 42.23$

**CURB TYPES**

	DENOTES SURMOUNTABLE CONCRETE CURB & GUTTER
	DENOTES B618 CONCRETE CURB & GUTTER
	DENOTES B612 CONCRETE CURB & GUTTER

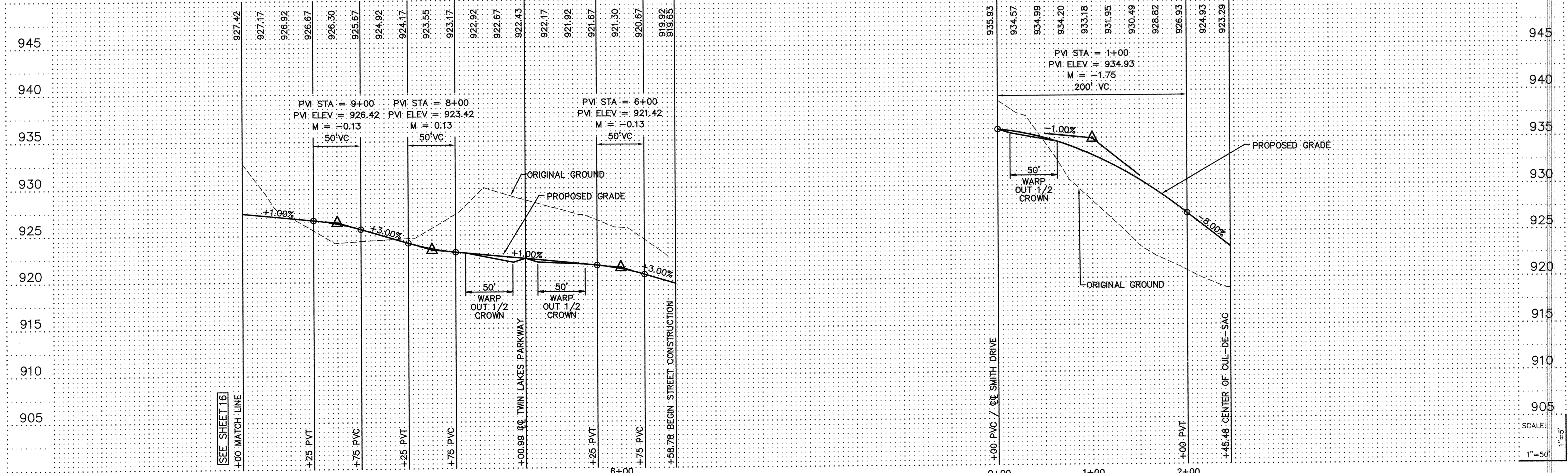
NOTE: TOP OF CURB ELEV. ARE THE ACTUAL ELEV'S FOR THE TYPE OF CURB SHOWN.



**RECORD PLAN 2005**  
**CONTRACTOR**  
 RYAN CONTRACTING  
 8700 13TH AVE.  
 SHAKOPEE, MN  
 (952) 894-3200

**SMITH DRIVE**

**187TH CIRCLE**



**PIONEER engineering**  
 LAND SURVEYORS & CIVIL ENGINEERS  
 LAND PLANNERS & LANDSCAPE ARCHITECTS  
 201 85th Avenue NE, Coon Rapids, MN 55433  
 (763) 783-1800 FAX: 783-1883  
 2422 Enterprise Drive, Mendota Heights, MN 55120  
 (651) 681-1914 FAX: 681-9488

I hereby certify that this plan was prepared by me or under my direct supervision and that I am a duly Licensed Professional Engineer under the laws of the State of Minnesota.

Name: *Paul J. Chappo*  
 Reg. No.: 19860 Date: 7/18/04

Revisions:  
 1. REVISED TOP OF CURB ELEVATIONS.  
 2. REVISED GRADES AT CUL-DE-SAC & EXTENDED BIT. TRAIL TO BACK OF CURB.  
 3. REVISED ELEVATIONS OF 187TH CIRCLE.  
 4. MOVED BARRICADES CLOSER TO INTERSECTION, ADDED GRADES ON CUL-DE-SAC AND REVISED STREET SECTION.  
 5. 3/10/05  
 6. X/XX/XX

Date: 7/16/04  
 Designed: BJK  
 Drawn: SAG  
**STREET CONSTRUCTION**

OWNER: RYAN CONTRACTING CO.  
 8700 13TH AVENUE EAST  
 SHAKOPEE, MINNESOTA 55379

PROJECT: TWIN LAKES ESTATES  
 ELK RIVER

RECORD PLAN 2005  
 SHEET 18 OF 24 SHEETS