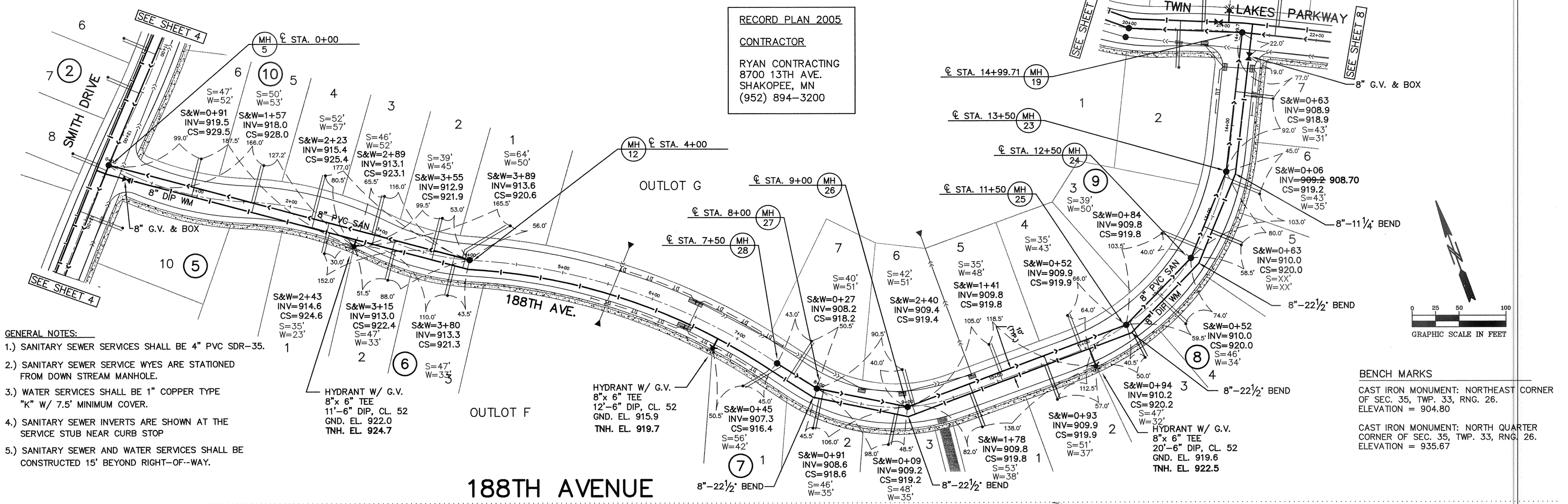
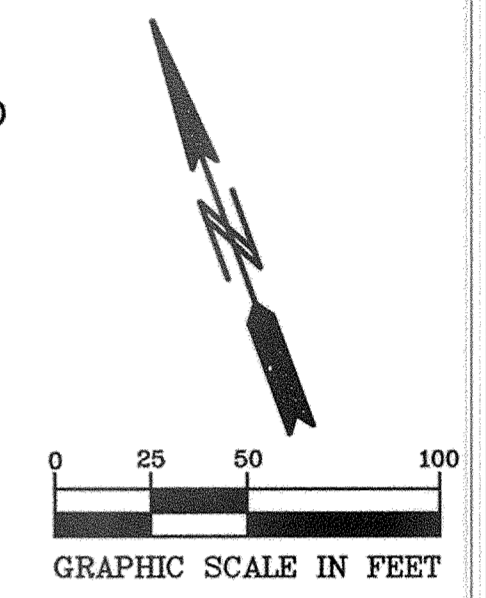


RECORD PLAN 2005
 CONTRACTOR
 RYAN CONTRACTING
 8700 13TH AVE.
 SHAKOPEE, MN
 (952) 894-3200



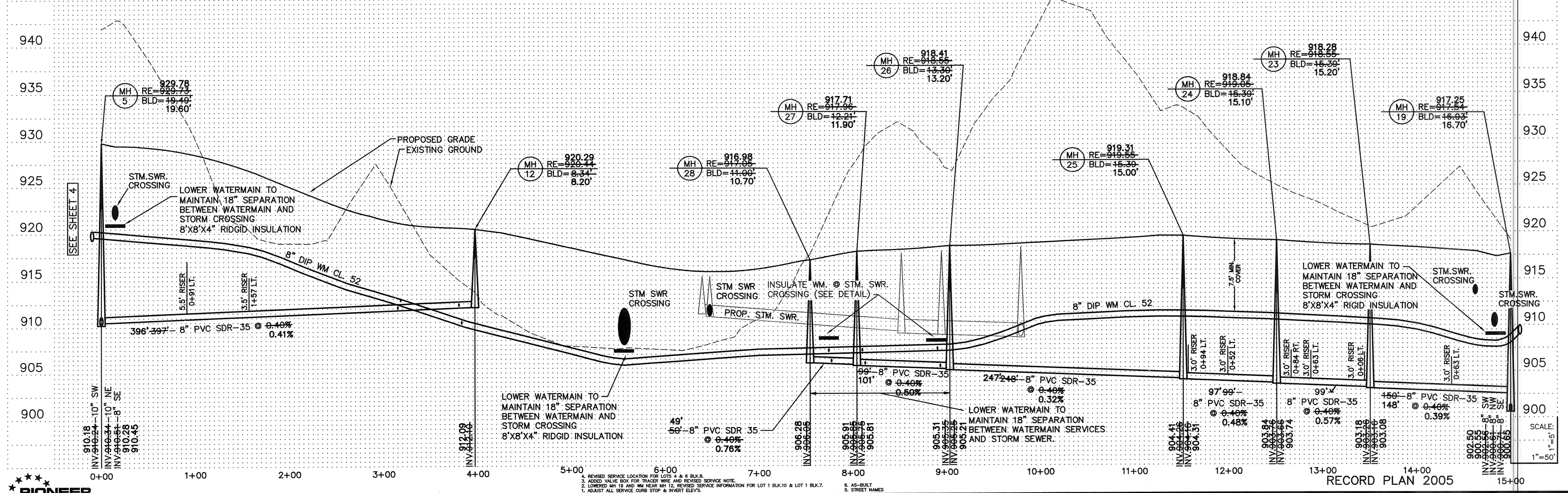
- GENERAL NOTES:**
- 1.) SANITARY SEWER SERVICES SHALL BE 4" PVC SDR-35.
 - 2.) SANITARY SEWER SERVICE WYES ARE STATIONED FROM DOWN STREAM MANHOLE.
 - 3.) WATER SERVICES SHALL BE 1" COPPER TYPE "K" W/ 7.5' MINIMUM COVER.
 - 4.) SANITARY SEWER INVERTS ARE SHOWN AT THE SERVICE STUB NEAR CURB STOP
 - 5.) SANITARY SEWER AND WATER SERVICES SHALL BE CONSTRUCTED 15' BEYOND RIGHT-OF-WAY.



BENCH MARKS

CAST IRON MONUMENT: NORTHEAST CORNER OF SEC. 35, TWP. 33, RNG. 26. ELEVATION = 904.80

CAST IRON MONUMENT: NORTH QUARTER CORNER OF SEC. 35, TWP. 33, RNG. 26. ELEVATION = 935.67



PIONEER engineering
 LAND SURVEYORS • CIVIL ENGINEERS
 201 85th Avenue NW, PA
 (763) 782-1800 FAX: 783-1883
 2422 Enterprise Drive
 Mendota Heights, MN 55120
 (651) 581-1914 FAX: 681-9488

I hereby certify that this plan was prepared by me or under my direct supervision and that I am a duly Licensed Professional Engineer under the laws of the State of Minnesota.

Name: *Paul J. Chirila*
 Reg. No.: 19860 Date: 7/16/04

Revisions:
 1. 8/1/04
 2. 8/27/04
 3. 9/3/04
 4. 10/29/04

S. 3/10/05
 6. XX/XX/XX

Date: 7/16/04
 Designed: AMH
 Drawn: AMH

SHEET TITLE
SANITARY SEWER & WATERMAIN

OWNER: RYAN CONTRACTING CO.
 8700 13TH AVENUE EAST
 SHAKOPEE, MINNESOTA 55379

PROJECT: TWIN LAKES ESTATES
 ELK RIVER

SHEET 9 OF 24 SHEETS