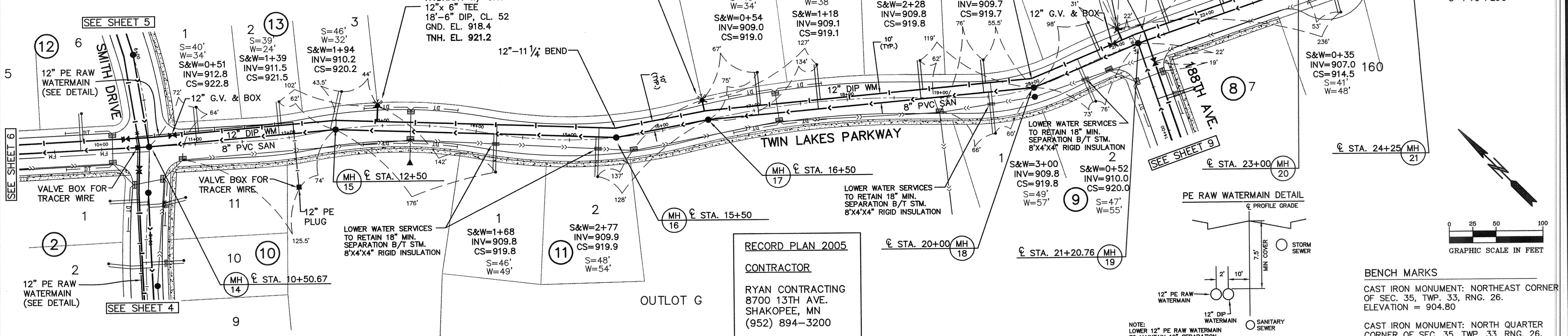
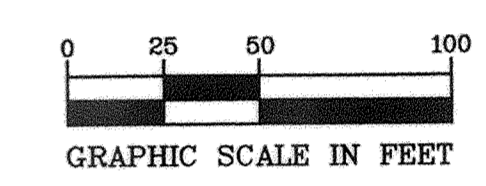


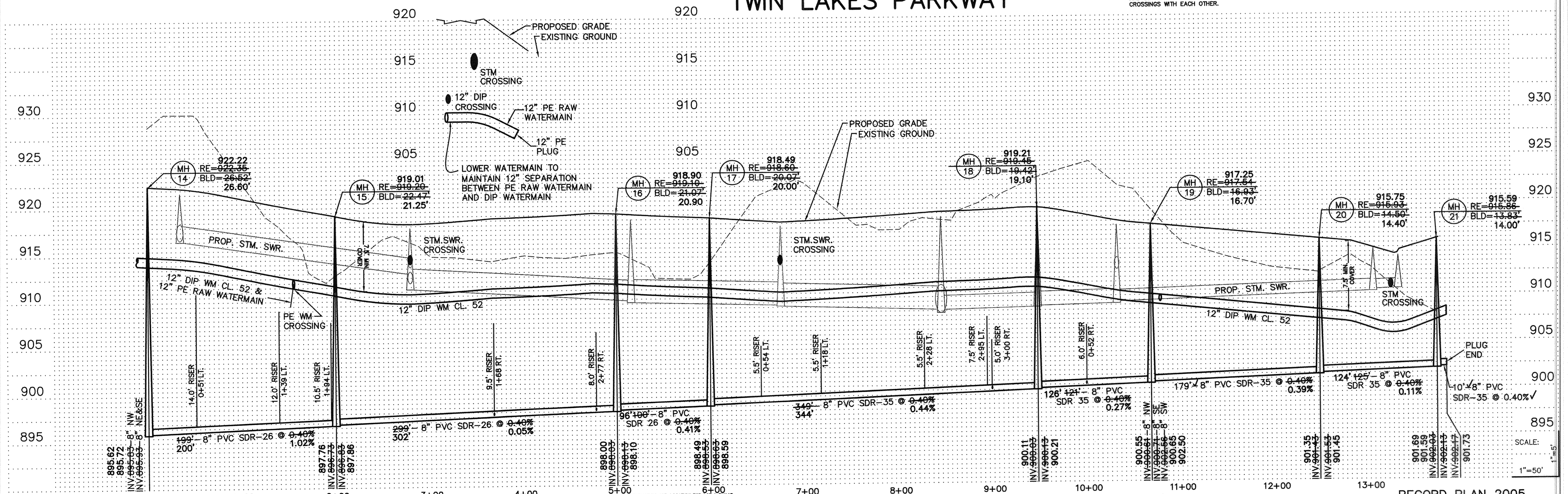
- GENERAL NOTES:**
- 1.) SANITARY SEWER SERVICES SHALL BE 4" PVC SDR-35.
  - 2.) SANITARY SEWER SERVICE WYES ARE STATIONED FROM DOWN STREAM MANHOLE.
  - 3.) WATER SERVICES SHALL BE 1" COPPER TYPE "K" W/ 7.5' MINIMUM COVER.
  - 4.) SANITARY SEWER INVERTS ARE SHOWN AT THE SERVICE STUB NEAR CURB STOP
  - 5.) SANITARY SEWER AND WATER SERVICES SHALL BE CONSTRUCTED 15' BEYOND RIGHT-OF-WAY.



**RECORD PLAN 2005**  
**CONTRACTOR**  
 RYAN CONTRACTING  
 8700 13TH AVE.  
 SHAKOPEE, MN  
 (952) 894-3200



**BENCH MARKS**  
 CAST IRON MONUMENT: NORTHEAST CORNER OF SEC. 35, TWP. 33, RNG. 26. ELEVATION = 904.80  
 CAST IRON MONUMENT: NORTH QUARTER CORNER OF SEC. 35, TWP. 33, RNG. 26. ELEVATION = 935.67



**PIONEER engineering PA**  
 LAND SURVEYORS - CIVIL ENGINEERS  
 LAND PLANNERS - LANDSCAPE ARCHITECTS  
 201 55th Avenue NW, Shakopee, MN 55443  
 (763) 783-1880 FAX: 783-1883  
 2422 Enterprise Drive, Hopkins, MN 55103  
 (612) 681-1914 FAX: 681-3488

I hereby certify that this plan was prepared by me or under my direct supervision and that I am a duly Licensed Professional Engineer under the laws of the State of Minnesota.

Name: *Paul J. Chmiele*  
 Paul J. Chmiele  
 Reg. No. 19860 Date 7/18/04

Revisions	Date	Designed	Drawn
1. 8/4/04	5. 10/20/04	AMH	AMH
2. 8/27/04	6. 3/10/05	AMH	AMH
3. 9/3/04	7. 3/23/05	AMH	AMH
4. 10/19/04			

**SANITARY SEWER & WATERMAIN**

**OWNER** RYAN CONTRACTING CO.  
 8700 13TH AVENUE EAST  
 SHAKOPEE, MINNESOTA 55379

**PROJECT** TWIN LAKES ESTATES  
 ELK RIVER

**SHEET 8 OF 24 SHEETS**

DRAWING NUMBER  
 TWIN LAKES EST. 05  
 8  
 SANITARY SEWER & WATERMAIN  
 RECORD PLAN 2005  
 204045