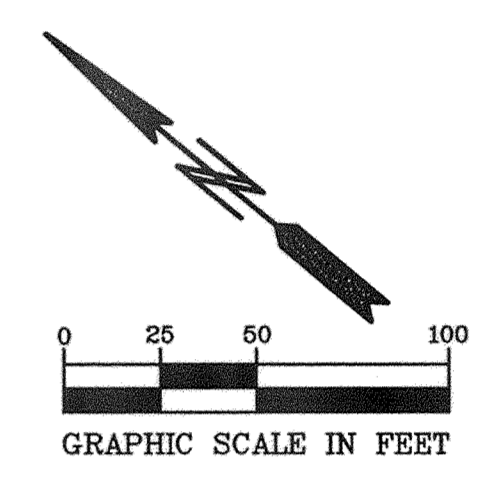


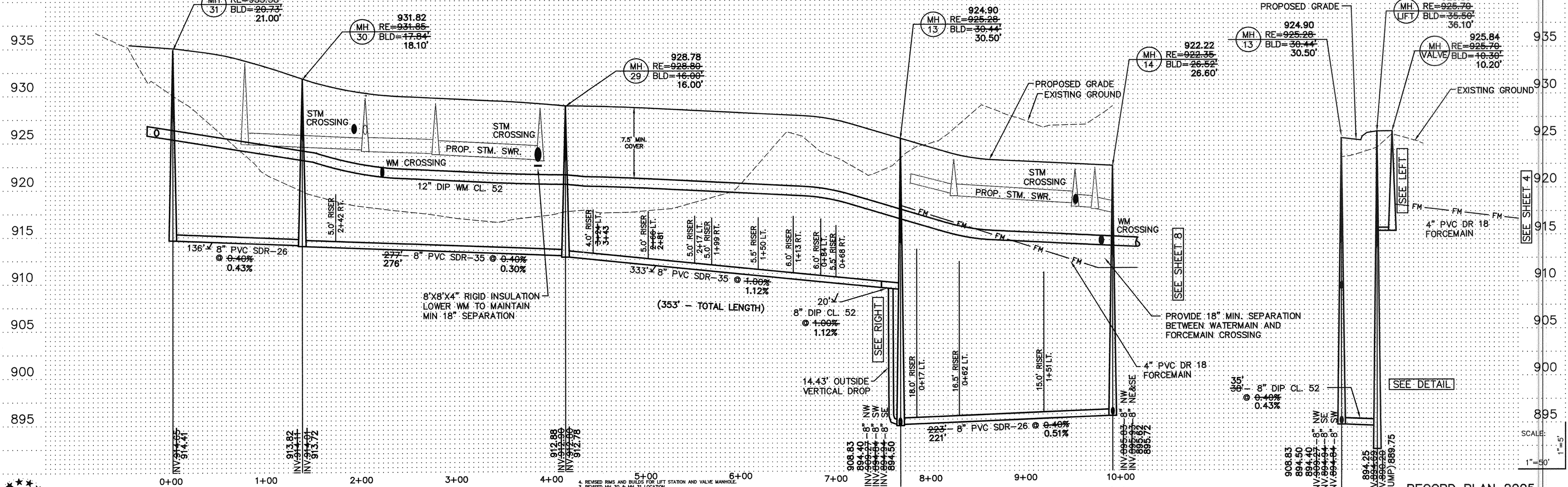
- GENERAL NOTES:
- 1.) SANITARY SEWER SERVICES SHALL BE 4" PVC SDR-35.
 - 2.) SANITARY SEWER SERVICE WYES ARE STATIONED FROM DOWN STREAM MANHOLE.
 - 3.) WATER SERVICES SHALL BE 1" COPPER TYPE "K" W/ 7.5' MINIMUM COVER.
 - 4.) SANITARY SEWER INVERTS ARE SHOWN AT THE SERVICE STUB NEAR CURB STOP.
 - 5.) SANITARY SEWER AND WATER SERVICES SHALL BE CONSTRUCTED 15' BEYOND RIGHT-OF-WAY.

RECORD PLAN 2005
 CONTRACTOR
 RYAN CONTRACTING
 8700 13TH AVE.
 SHAKOPEE, MN
 (952) 894-3200



BENCH MARKS
 CAST IRON MONUMENT: NORTHEAST CORNER OF SEC. 35, TWP. 33, RNG. 26. ELEVATION = 904.80
 CAST IRON MONUMENT: NORTH QUARTER CORNER OF SEC. 35, TWP. 33, RNG. 26. ELEVATION = 935.67

TWIN LAKES PARKWAY



PIONEER engineering
 LAND SURVEYORS • CIVIL ENGINEERS
 LAND PLANNERS • LANDSCAPE ARCHITECTS
 201 85th Avenue NW, Suite 2000, Minneapolis, MN 55425
 (612) 922-1800 FAX: 763-1883
 2422 Enterprise Drive, Mendota Heights, MN 55120
 (651) 681-1914 FAX: 612-3488

I hereby certify that this plan was prepared by me or under my direct supervision and that I am a duly Licensed Professional Engineer under the laws of the State of Minnesota.

Name: *Paul J. Chaffin*
 Reg. No.: 19860 Date: 7/16/04

Revisions:
 1. 8/1/04
 2. 8/2/04
 3. 8/5/04
 4. 10/16/04
 5. 10/19/04
 6. 10/20/04
 7. 3/10/05
 8. 3/23/05

Date: 7/16/04
 SHEET TITLE: SANITARY SEWER & WATERMAIN
 OWNER: RYAN CONTRACTING CO.
 8700 13TH AVENUE EAST
 SHAKOPEE, MINNESOTA 55379

PROJECT: TWIN LAKES ESTATES
 ELK RIVER

SHEET 6 OF 24 SHEETS

RECORD PLAN 2005