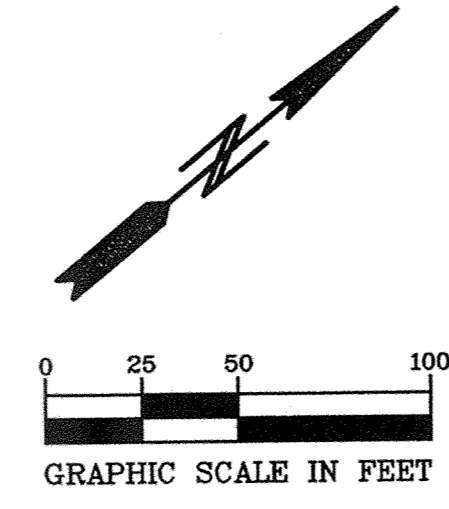
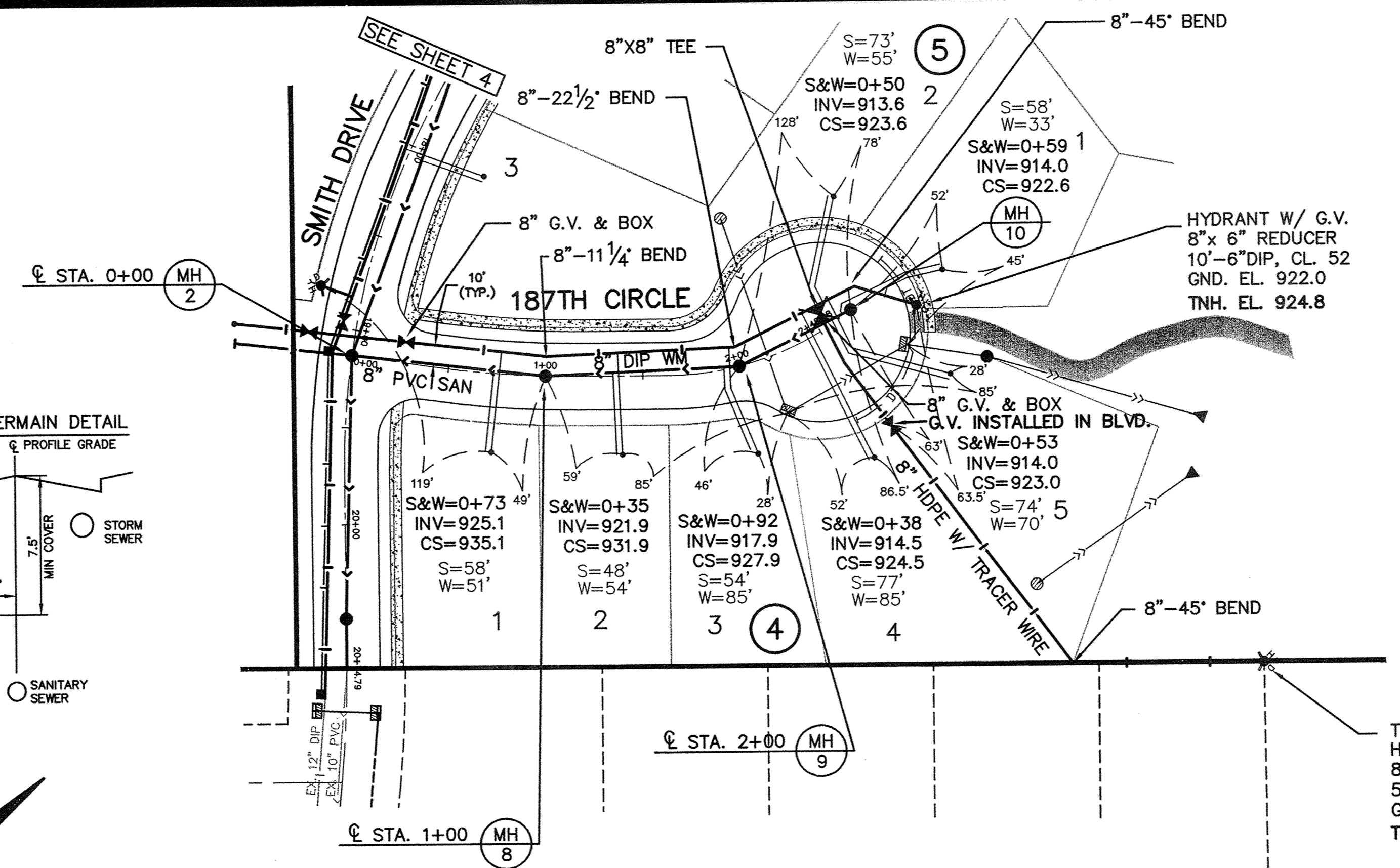


NOTE:
LOWER 12\"/>



SMITH DRIVE



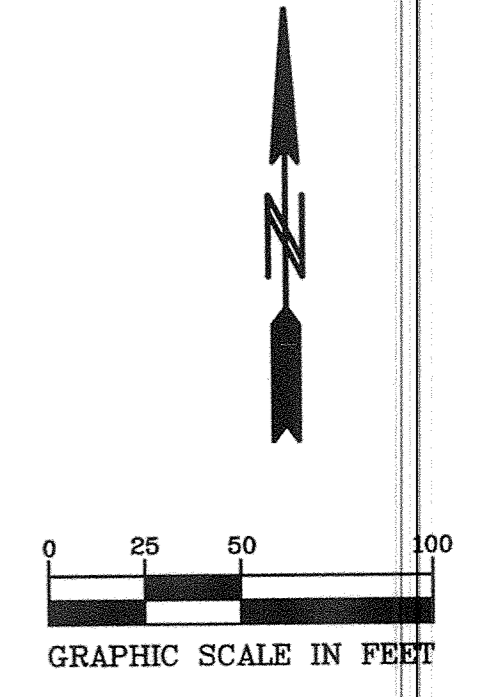
TEMPORARY
HYDRANT W/ G.V.
8\"/>

187TH CIRCLE

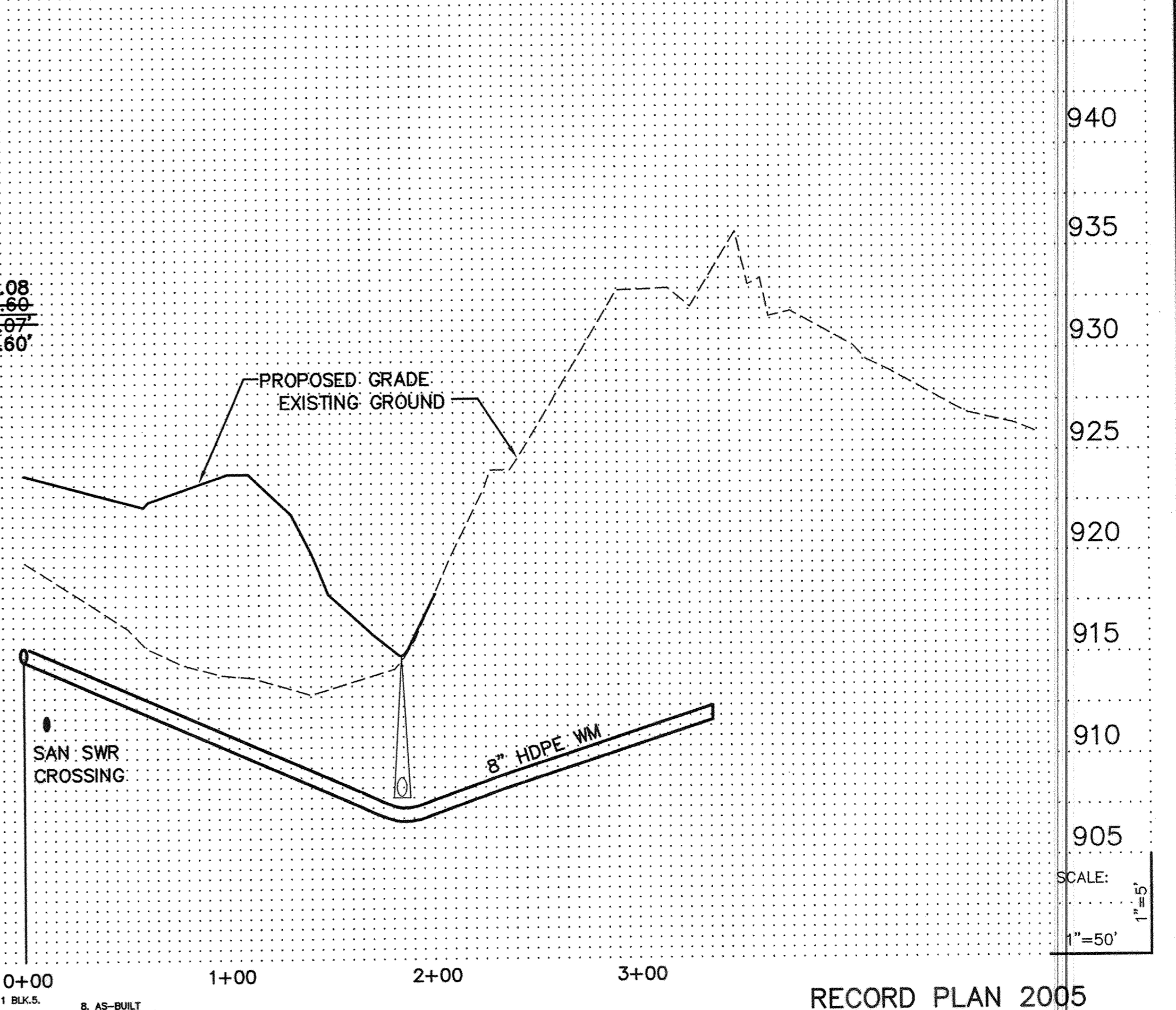
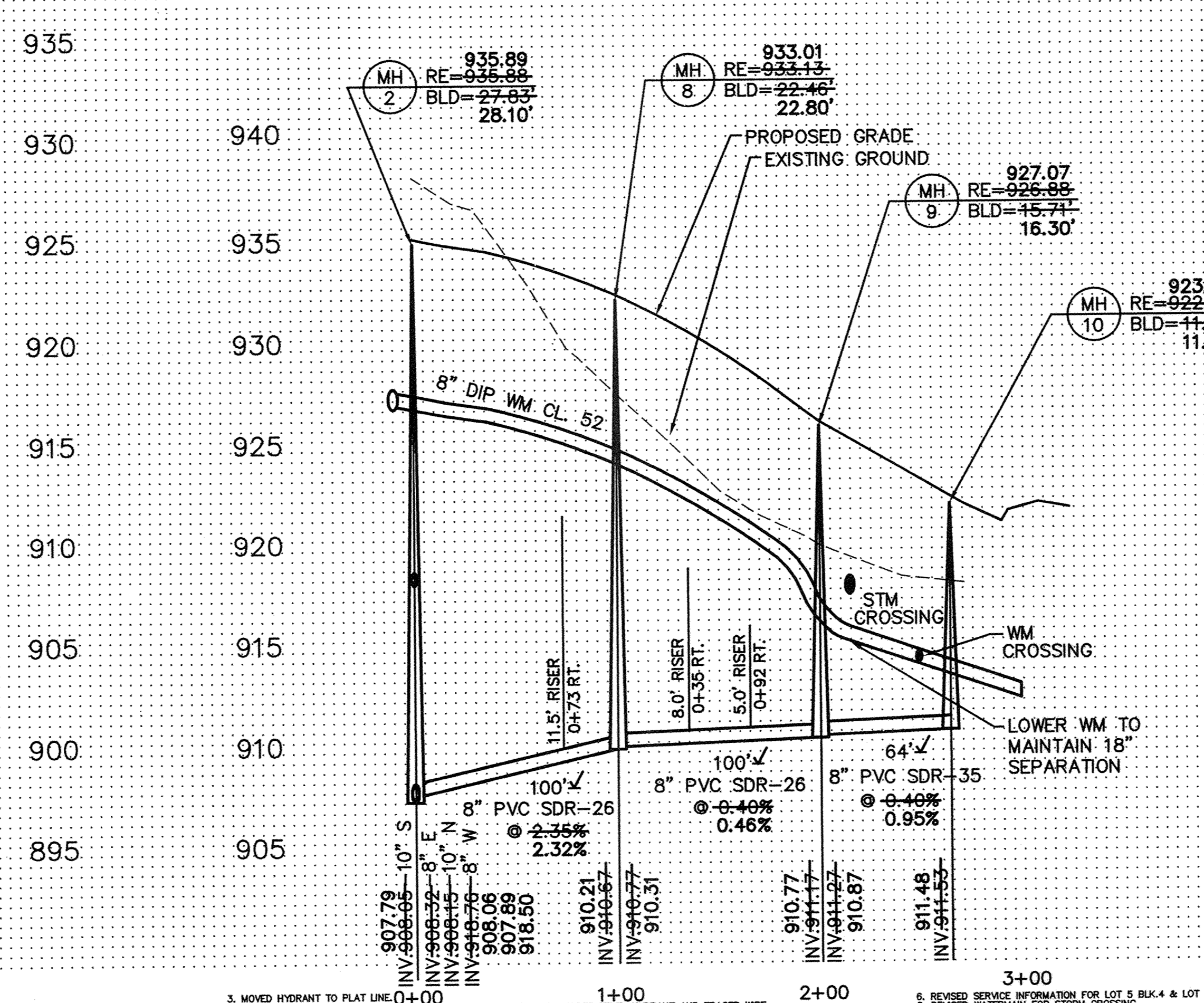
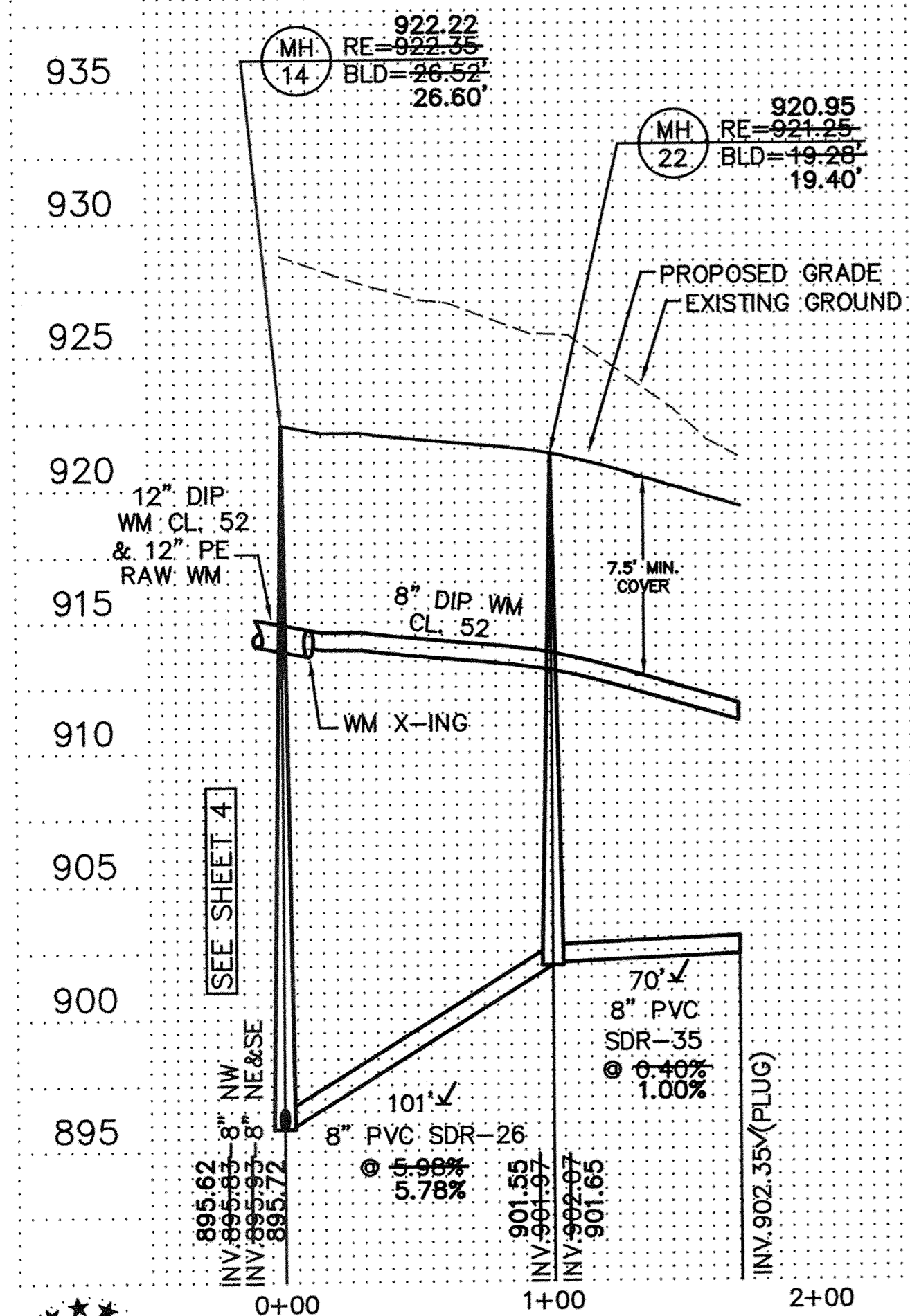
WM-OVERLAND-SOUTH

- GENERAL NOTES:**
- 1.) SANITARY SEWER SERVICES SHALL BE 4" PVC SDR-35.
 - 2.) SANITARY SEWER SERVICE WYES ARE STATIONED FROM DOWN STREAM MANHOLE.
 - 3.) WATER SERVICES SHALL BE 1" COPPER TYPE "K" W/ 7.5" MINIMUM COVER.
 - 4.) SANITARY SEWER INVERTS ARE SHOWN AT THE SERVICE STUB NEAR CURB STOP.
 - 5.) SANITARY SEWER AND WATER SERVICES SHALL BE CONSTRUCTED 15' BEYOND RIGHT-OF-WAY.

RECORD PLAN 2005
CONTRACTOR
RYAN CONTRACTING
8700 13TH AVE.
SHAKOPEE, MN
(952) 894-3200



BENCH MARKS
CAST IRON MONUMENT: NORTHEAST CORNER OF SEC. 35, TWP. 33, RNG. 26. ELEVATION = 904.80
CAST IRON MONUMENT: NORTH QUARTER CORNER OF SEC. 35, TWP. 33, RNG. 26. ELEVATION = 935.67



3. MOVED HYDRANT TO PLAT LINE 0+00. 4. LOWERED MANHOLE 14, ADDED INSULATION TO STORM CROSSING, ADDED TEMP. HYDRANT AND TRACER WIRE.
1. ADJUST ALL SERVICE CURB STOP & INVERT ELEV'S; ADD 12\"/>

PIONEER engineering
201 85th Avenue NW
Shakopee, MN 55379
763-765-1000 FAX: 763-1883
2422 Enterprise Drive
Minnetonka, MN 55345
(612) 681-1514 FAX: 681-9488

I hereby certify that this plan was prepared by me or under my direct supervision and that I am a duly Licensed Professional Engineer under the laws of the State of Minnesota.

Name: *R. D. ...*
Reg. No.: 19860 Date: 7/16/04

Revisions:
1. 1/4/04
2. 5/22/04
3. 5/2/04
4. 9/21/04

Date: 7/16/04
Designed: AMH
Drawn: AMH

SHEET TITLE: **SANITARY SEWER & WATERMAIN**

OWNER: **RYAN CONTRACTING CO.**
8700 13TH AVENUE EAST
SHAKOPEE, MINNESOTA 55379

PROJECT: **TWIN LAKES ESTATES**
ELK RIVER

SHEET 5 OF 24 SHEETS