

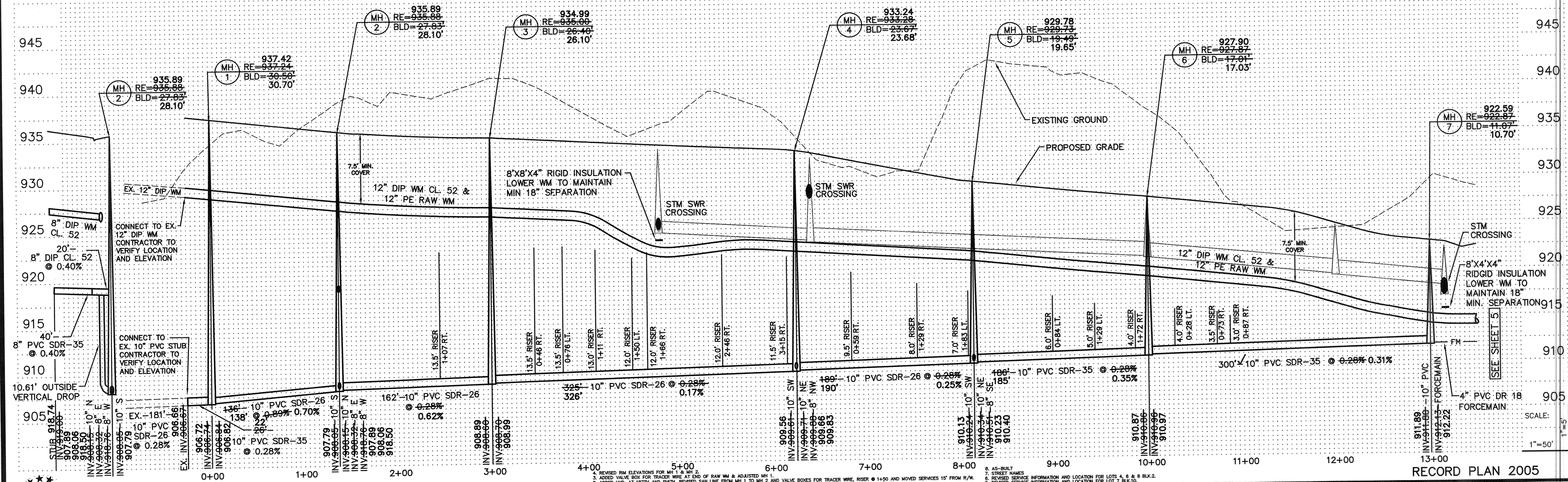
**RECORD PLAN 2005**  
**CONTRACTOR**  
 RYAN CONTRACTING  
 8700 13TH AVE.  
 SHAKOPEE, MN  
 (952) 894-3200

- GENERAL NOTES:**
- 1.) SANITARY SEWER SERVICES SHALL BE 4" PVC SDR-35.
  - 2.) SANITARY SEWER SERVICE WYES ARE STATIONED FROM DOWN STREAM MANHOLE.
  - 3.) WATER SERVICES SHALL BE 1" COPPER TYPE "K" W/ 7.5" MINIMUM COVER.
  - 4.) SANITARY SEWER INVERTS ARE SHOWN AT THE SERVICE STUB NEAR CURB STOP.
  - 5.) SANITARY SEWER AND WATER SERVICES SHALL BE CONSTRUCTED 15' BEYOND RIGHT-OF-WAY.

**BENCH MARKS**

CAST IRON MONUMENT: NORTHEAST CORNER OF SEC. 35, TWP. 33, RNG. 26. ELEVATION = 904.80

CAST IRON MONUMENT: NORTH QUARTER CORNER OF SEC. 35, TWP. 33, RNG. 26. ELEVATION = 935.67



**PIONEER engineering PA**  
 LAND SURVEYORS - CIVIL ENGINEERS  
 LAND PLANNERS - LANDSCAPE ARCHITECTS  
 1201 85th Avenue NW  
 Coon Rapids, MN 55433  
 (763) 783-1880 FAX: 783-1883  
 2422 Enterprise Drive  
 Mendota Heights, MN 55120  
 (651) 681-1914 FAX: 681-9488

I hereby certify that this plan was prepared by me or under my direct supervision and that I am a duly Licensed Professional Engineer under the laws of the State of Minnesota.

Name: *Paul J. Chene*  
 Reg. No.: 19860 Date: 7/16/04

Revisions	Date	Drawn
1. 8/4/04	5. 10/19/04	AMH
2. 8/27/04	6. 10/20/04	AMH
3. 9/2/04	7. 3/17/05	AMH
4. 9/21/04	8. 02/XX/XX	AMH

SHEET TITLE: **SANITARY SEWER & WATERMAIN**

OWNER: **RYAN CONTRACTING CO.**  
 8700 13TH AVENUE EAST  
 SHAKOPEE, MINNESOTA 55379

PROJECT: **TWIN LAKES ESTATES**  
 ELK RIVER

SHEET 4 OF 24 SHEETS