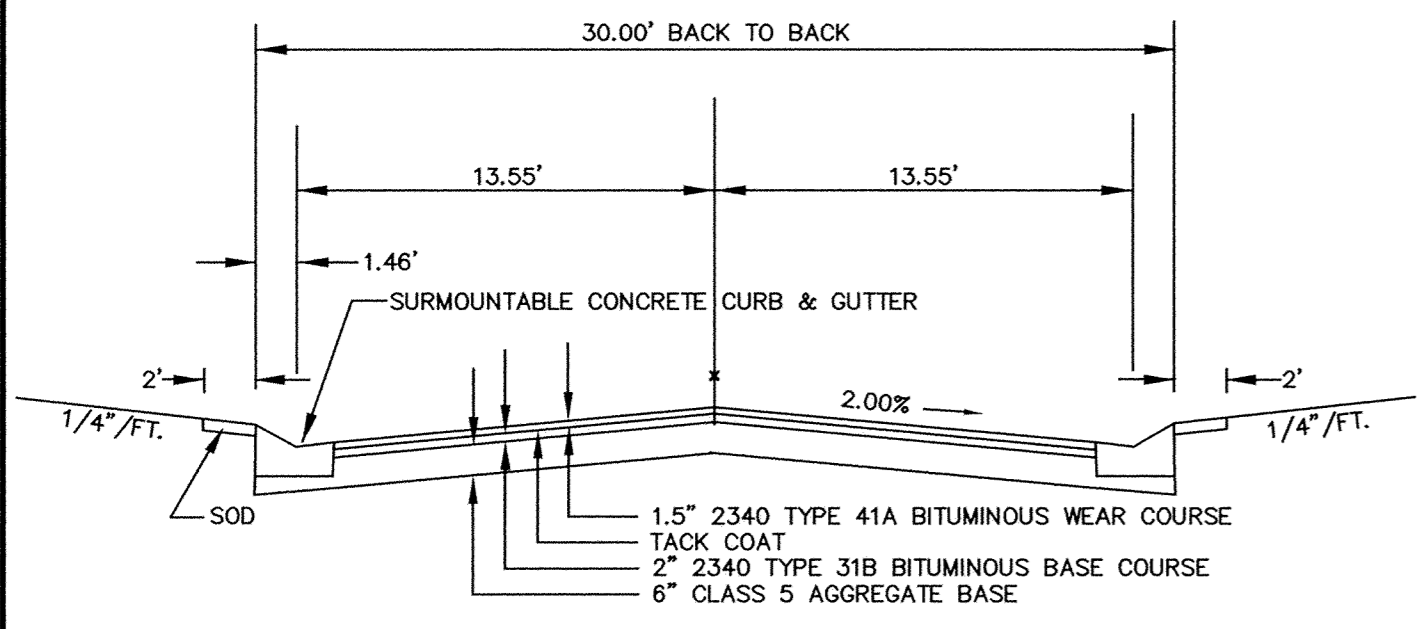
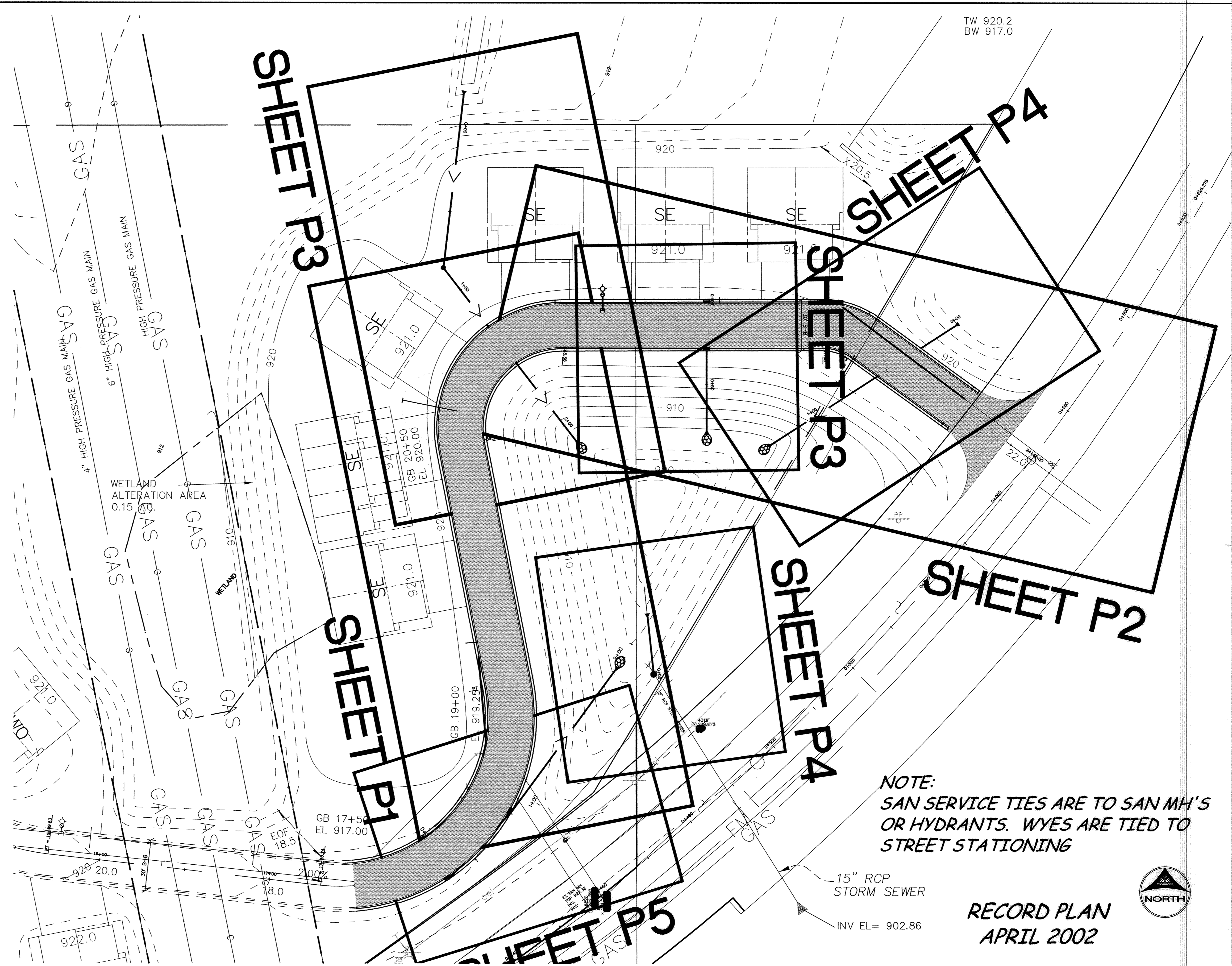


SACO PRODUCTS • NEW HOPE, MINNESOTA
 REPRODUCED BY PART NUMBER 8552
 SACO PRODUCTS • NEW HOPE, MINNESOTA
 REPRODUCED BY PART NUMBER 8552
 SACO PRODUCTS • NEW HOPE, MINNESOTA
 REPRODUCED BY PART NUMBER 8552
 SACO PRODUCTS • NEW HOPE, MINNESOTA
 REPRODUCED BY PART NUMBER 8552

TW 920.2
BW 917.0



TYPICAL STREET SECTION
 NOTE:
 B618 CONCRETE CURB AND GUTTER SHALL BE PLACED AROUND RADII AND AT STORM SEWER STRUCTURES.



NOTE:
 SAN SERVICE TIES ARE TO SAN MH'S OR HYDRANTS. WYES ARE TIED TO STREET STATIONING

15" RCP
STORM SEWER
INV EL= 902.86




RECORD PLAN
APRIL 2002

DESIGNED BY: _____ DRAWN BY: RM
 APPROVED BY: _____ JOB NUMBER 809781J
 CAD DATE: April 03, 2002 1:59:51 p.m.
 CAD FILE: 809783J\Phase III-Asbuilts\809783L.DWG

I HEREBY CERTIFY THAT THIS PLAN, SPECIFICATION, OR REPORT WAS PREPARED BY ME OR UNDER MY DIRECT SUPERVISION AND THAT I AM A DAILY LICENSED PROFESSIONAL ENGINEER UNDER THE LAWS OF THE STATE OF MINNESOTA.
 SIGNATURE: _____ DATE: _____
 PRINTED NAME: TERRY J. MAURER LIC. NO. 15316

NO.	DATE	BY	REVISION DESCRIPTION


Howard R. Green Company
 CONSULTING ENGINEERS
 1326 ENERGY PARK DRIVE
 ST. PAUL, MINNESOTA 55108
 (651) 644-4389

CITY OF ELK RIVER
TWIN LAKES TOWNHOMES 3RD ADDITION
STREET AND UTILITY IMPROVEMENTS

SHEET INDEX, TYPICAL SECTION, NOTES

SHEET NO.
L1