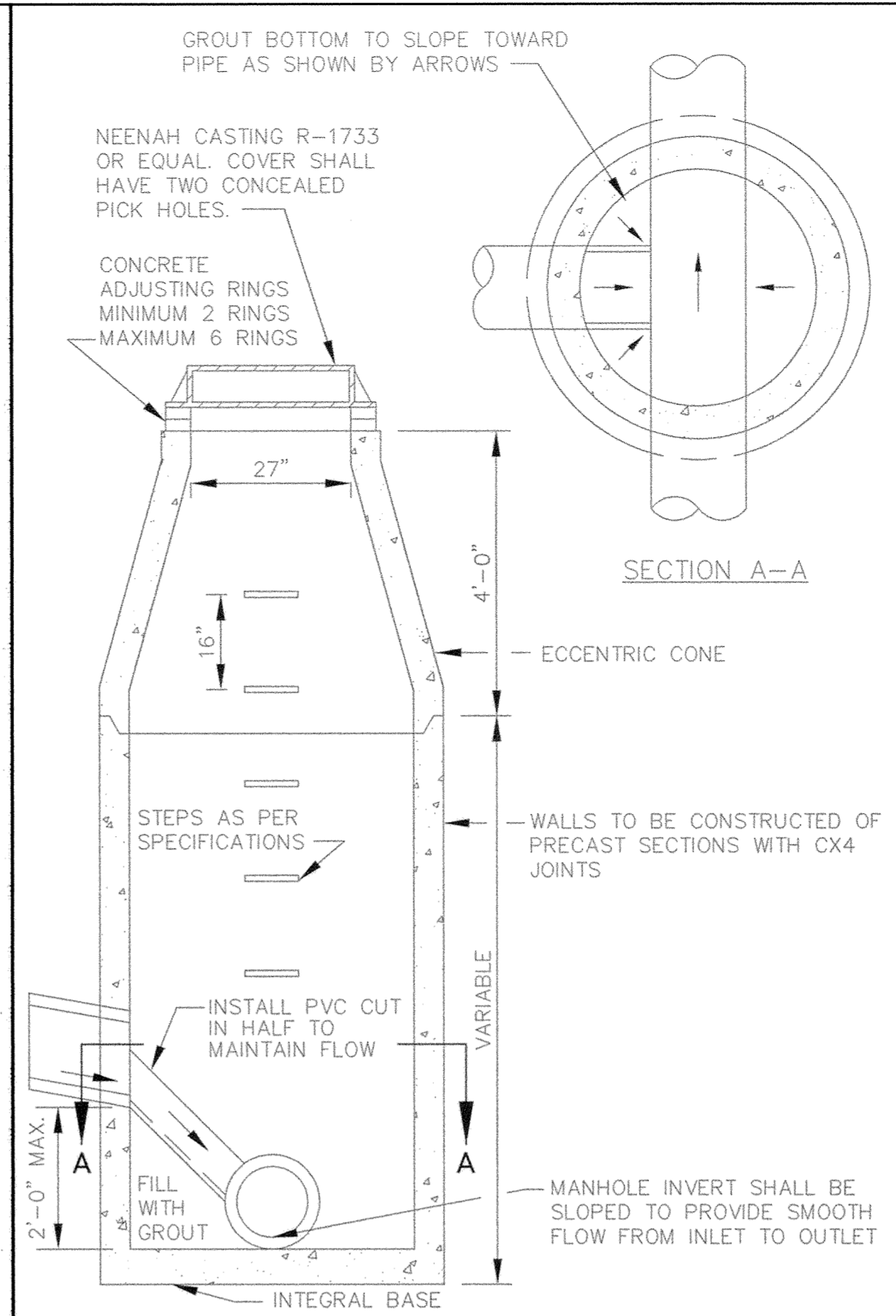
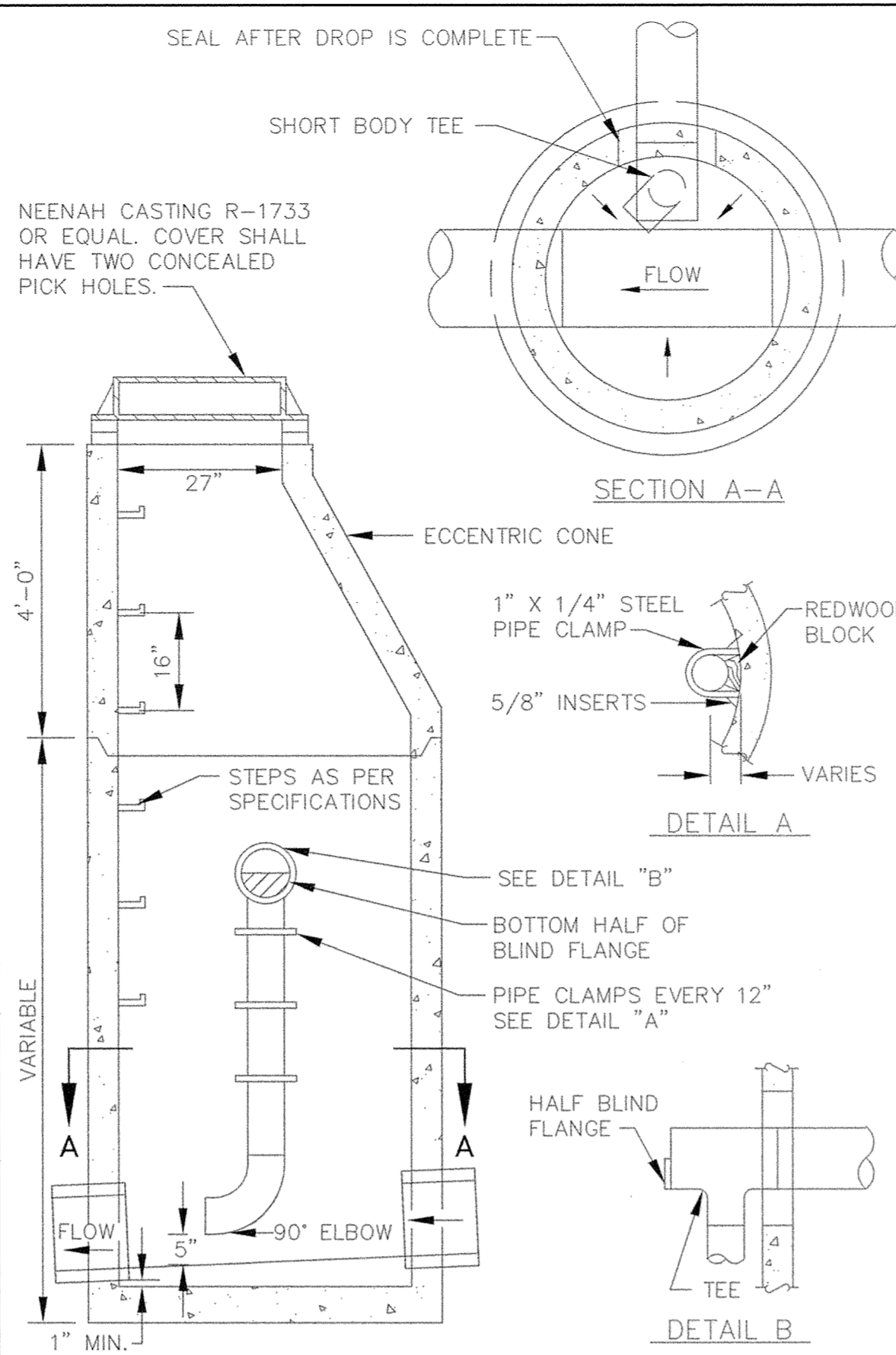


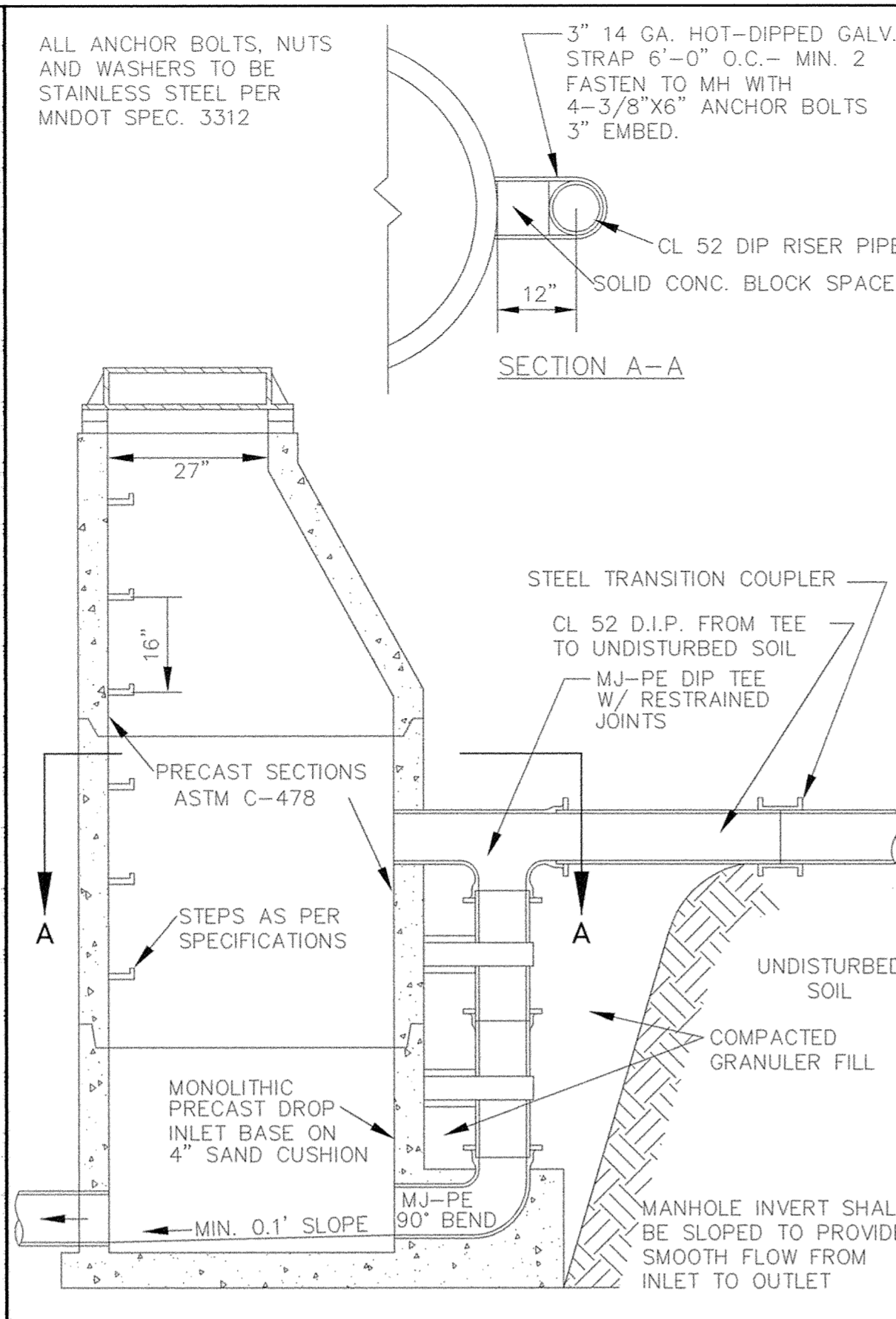
SLAB TOP MANHOLE



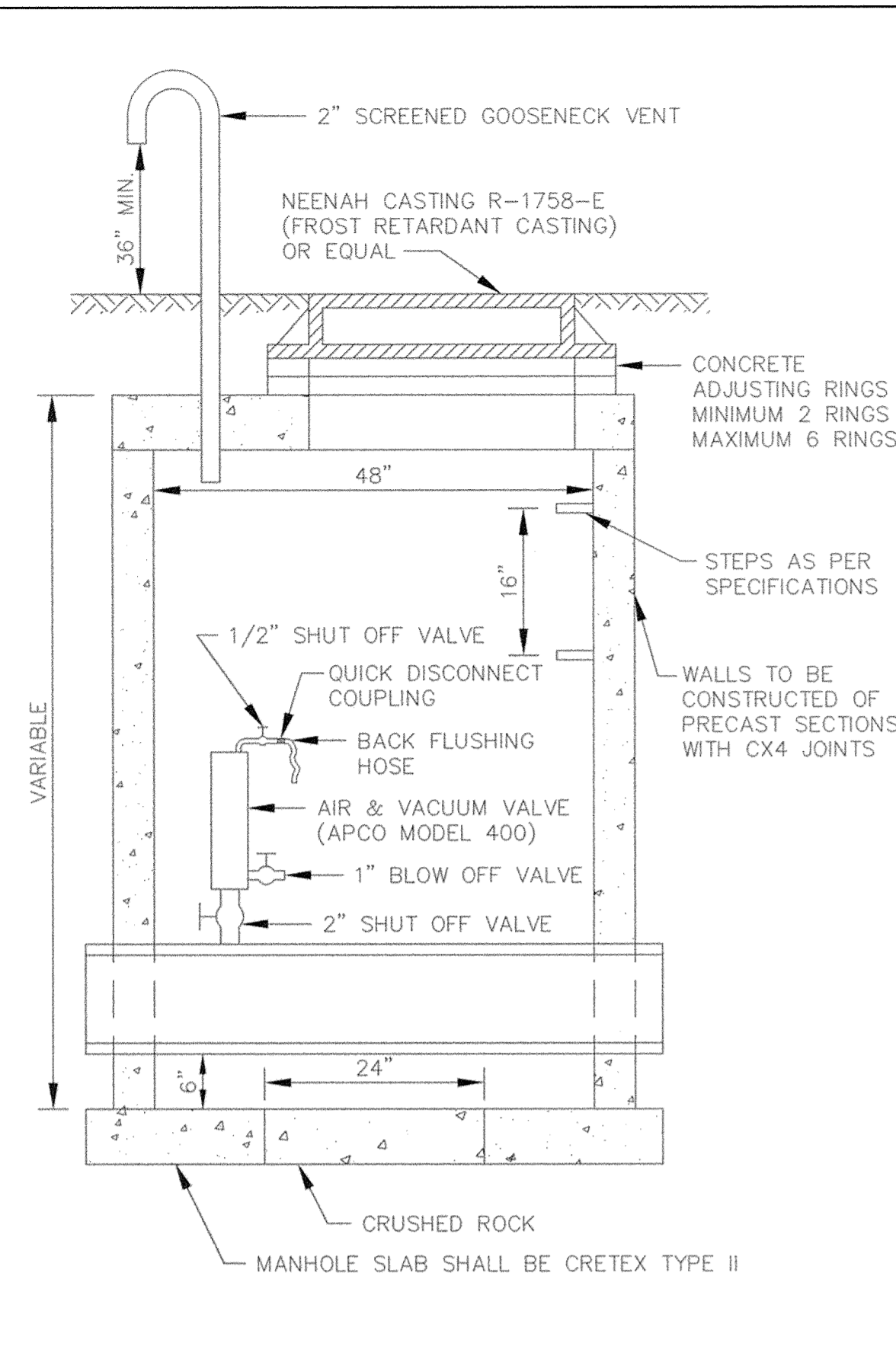
INSIDE DROP MANHOLE (TWO FEET OR LESS)



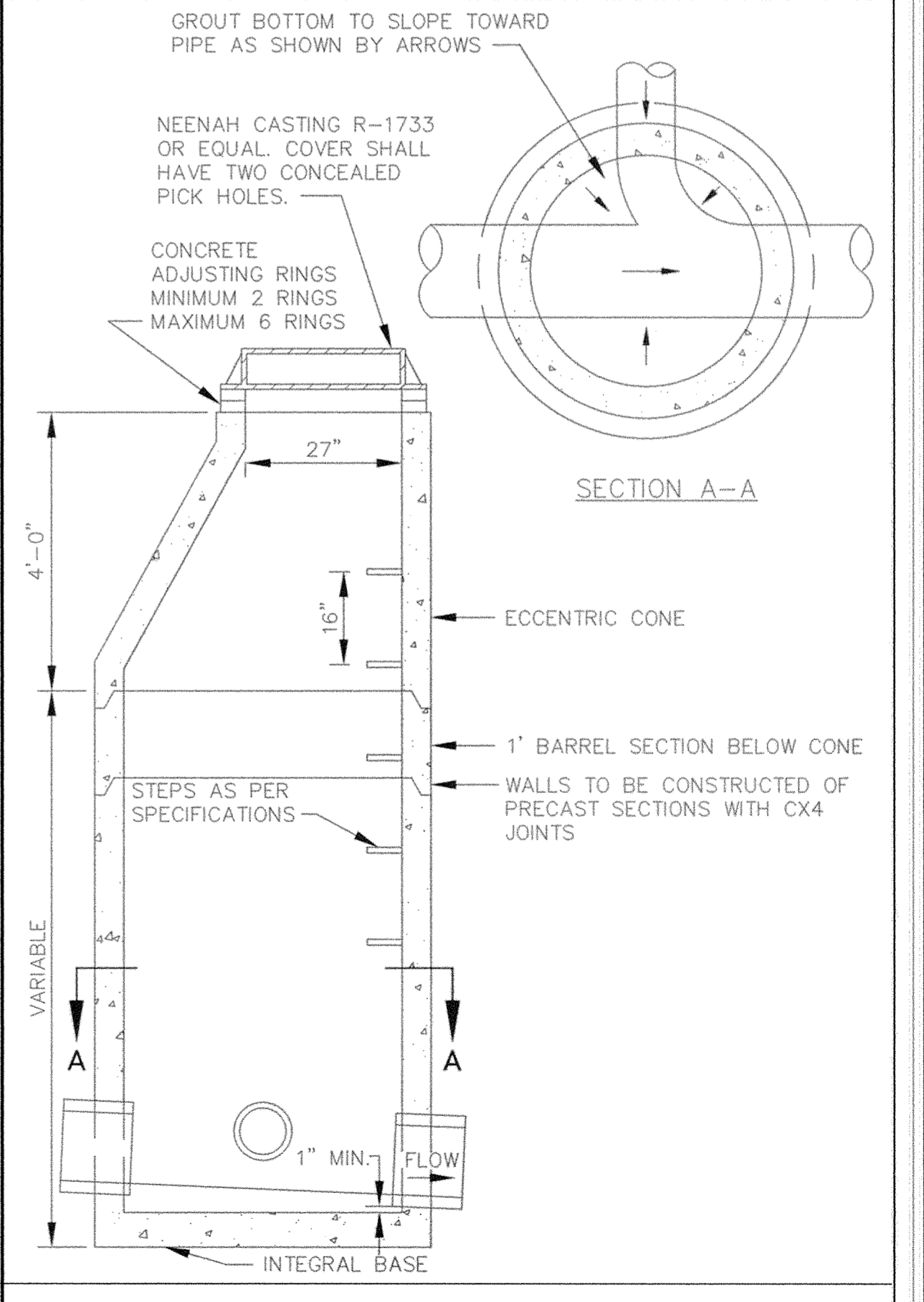
INSIDE DROP MANHOLE



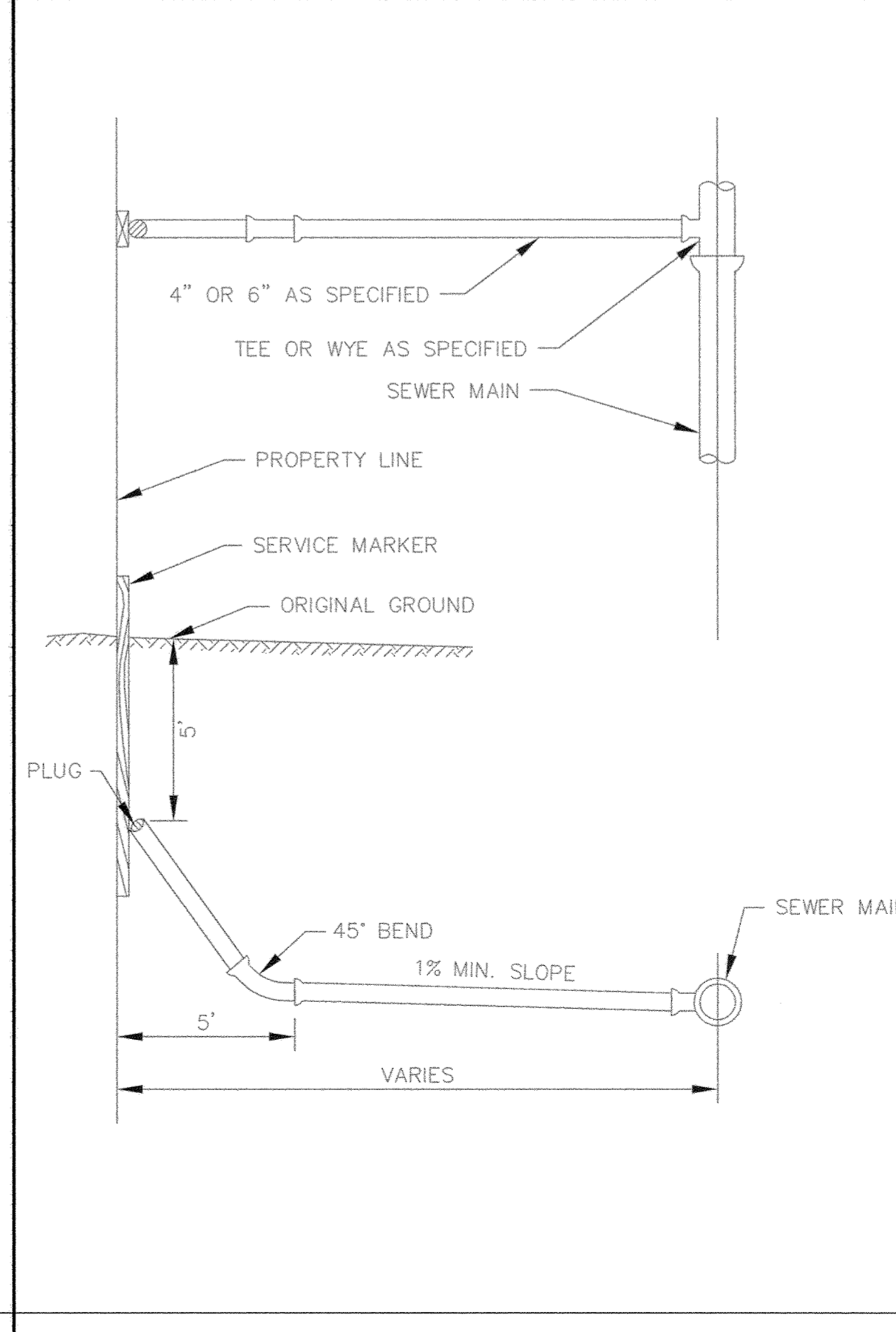
OUTSIDE DROP MANHOLE



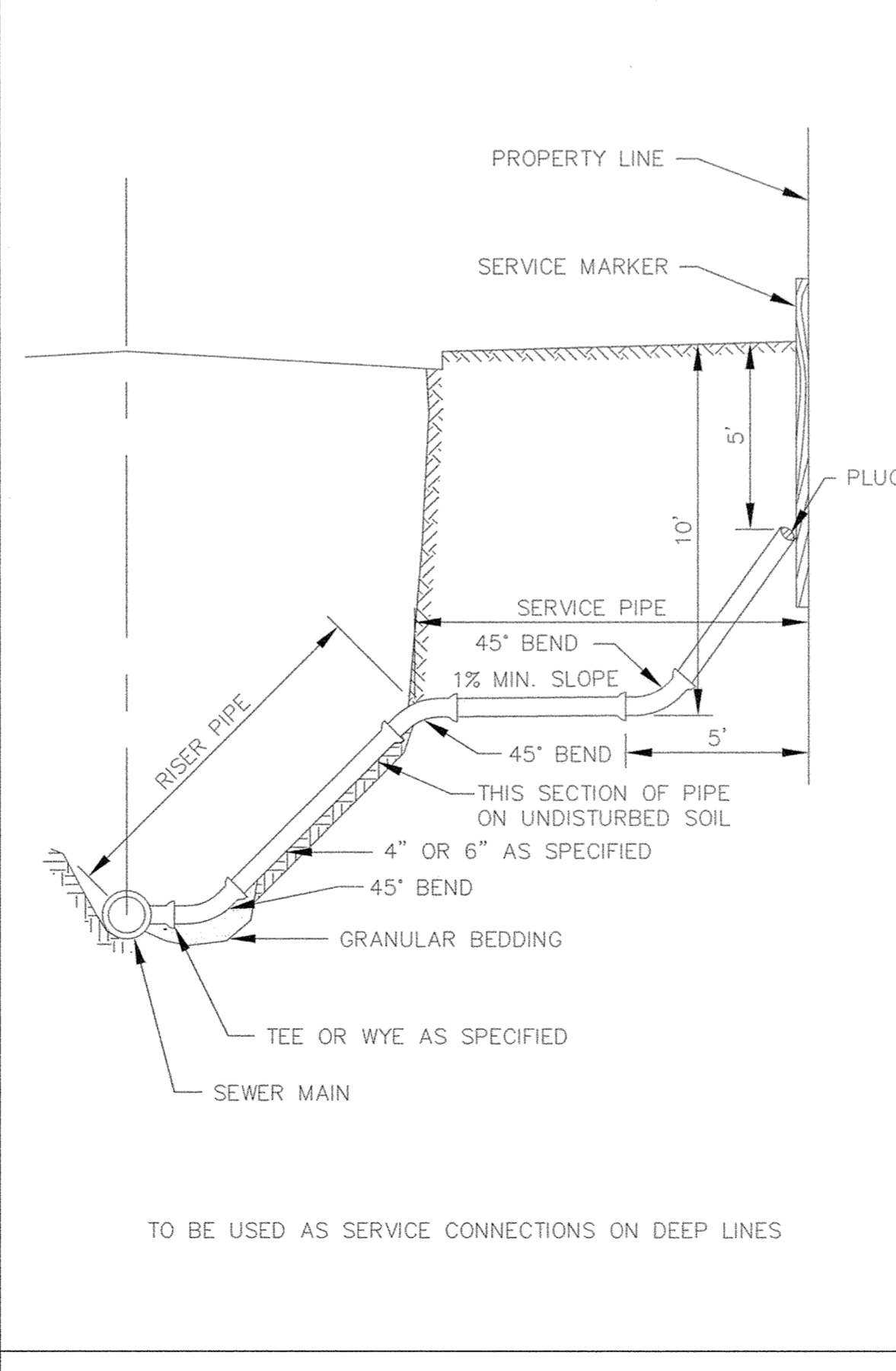
STANDARD AIR RELIEF MANHOLE



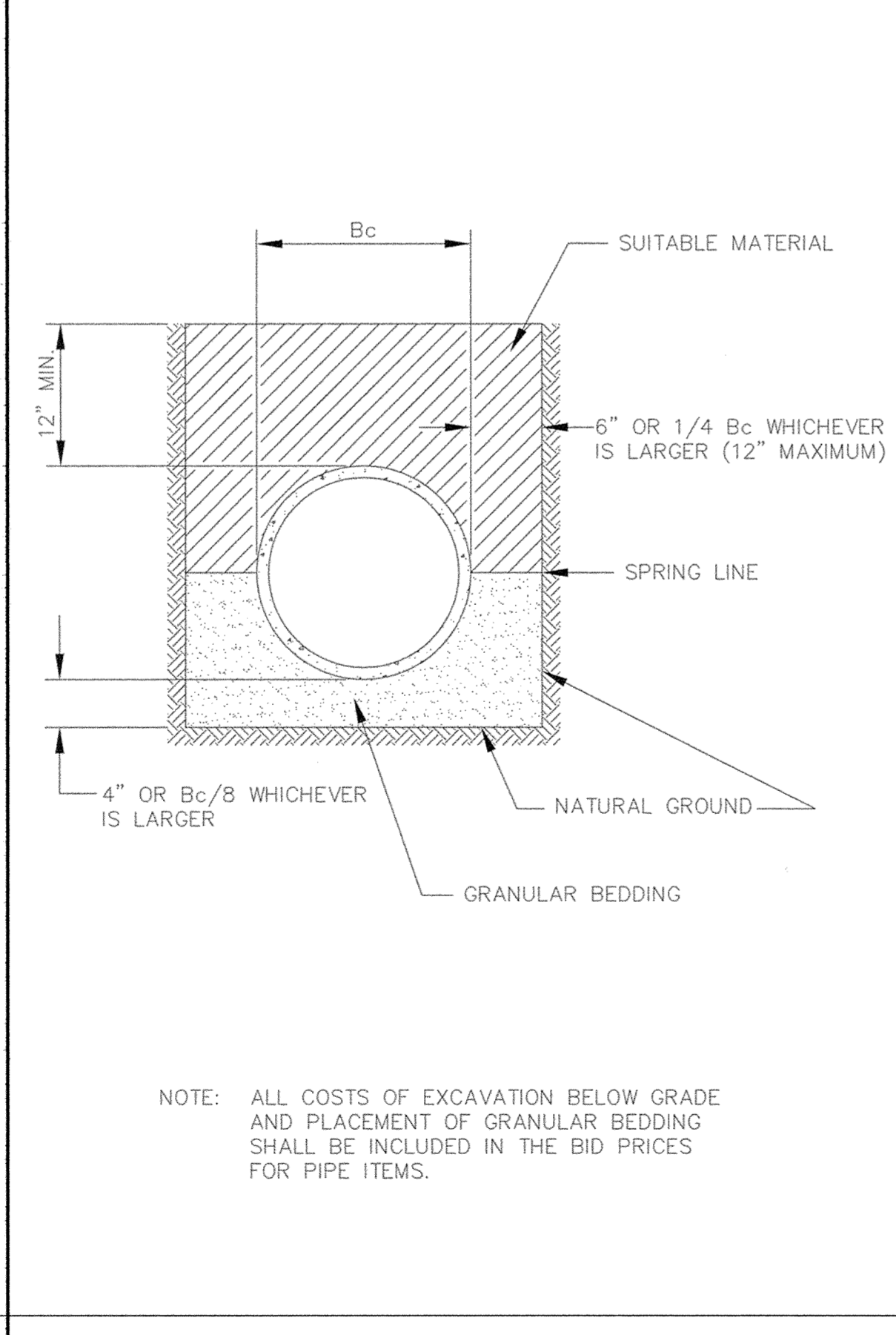
STANDARD MANHOLE



TYPICAL HOUSE SERVICE



SERVICE RISER SECTION



CLASS B PIPE BEDDING



CLASS B PIPE BEDDING

DESIGNED BY: _____ DRAWN BY: RM
 APPROVED BY: _____ JOB NUMBER 809781J
 CAD DATE: January 20, 2005 1:14:53 p.m.
 CAD FILE: 809782\ASBUILT\Phase2\809782-SA.DWG

I HEREBY CERTIFY THAT THIS PLAN, SPECIFICATION, OR REPORT WAS PREPARED BY ME OR UNDER MY DIRECT SUPERVISION AND THAT I AM A DULY LICENSED PROFESSIONAL ENGINEER UNDER THE LAWS OF THE STATE OF MINNESOTA.
 SIGNATURE _____ DATE _____
 PRINTED NAME JOHN M. ANDERSON LIC. NO. 25889

NO.	DATE	BY	REVISION DESCRIPTION

1326 ENERGY PARK DRIVE
 ST. PAUL, MINNESOTA 55108
 (651) 644-4389
Howard R. Green Company
 CONSULTING ENGINEERS

CITY OF ELK RIVER
TWIN LAKES TOWNHOMES 2ND ADDITION
STREET AND UTILITY IMPROVEMENTS

SANITARY SEWER CONSTRUCTION DETAILS

SHEET NO.
D1