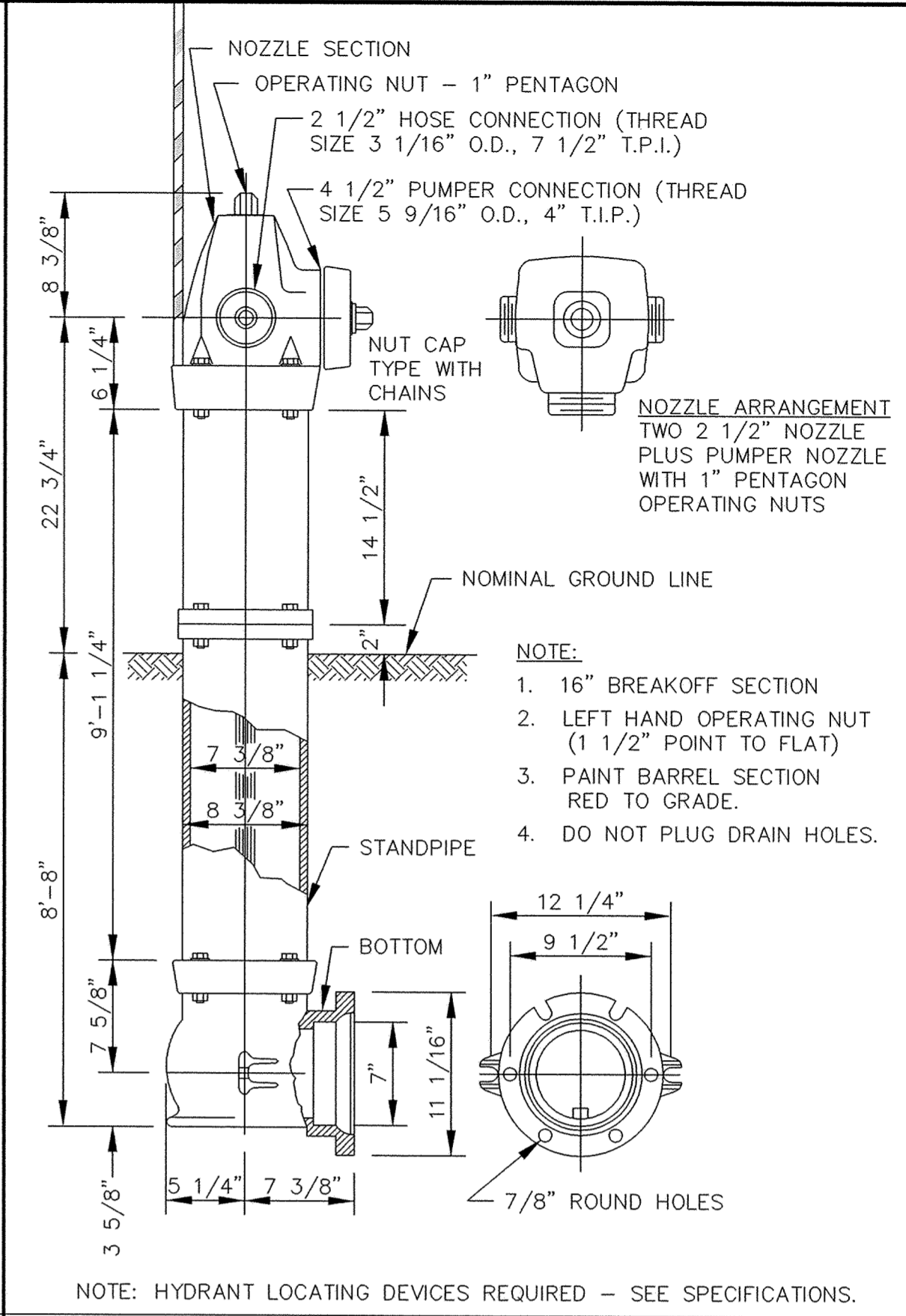
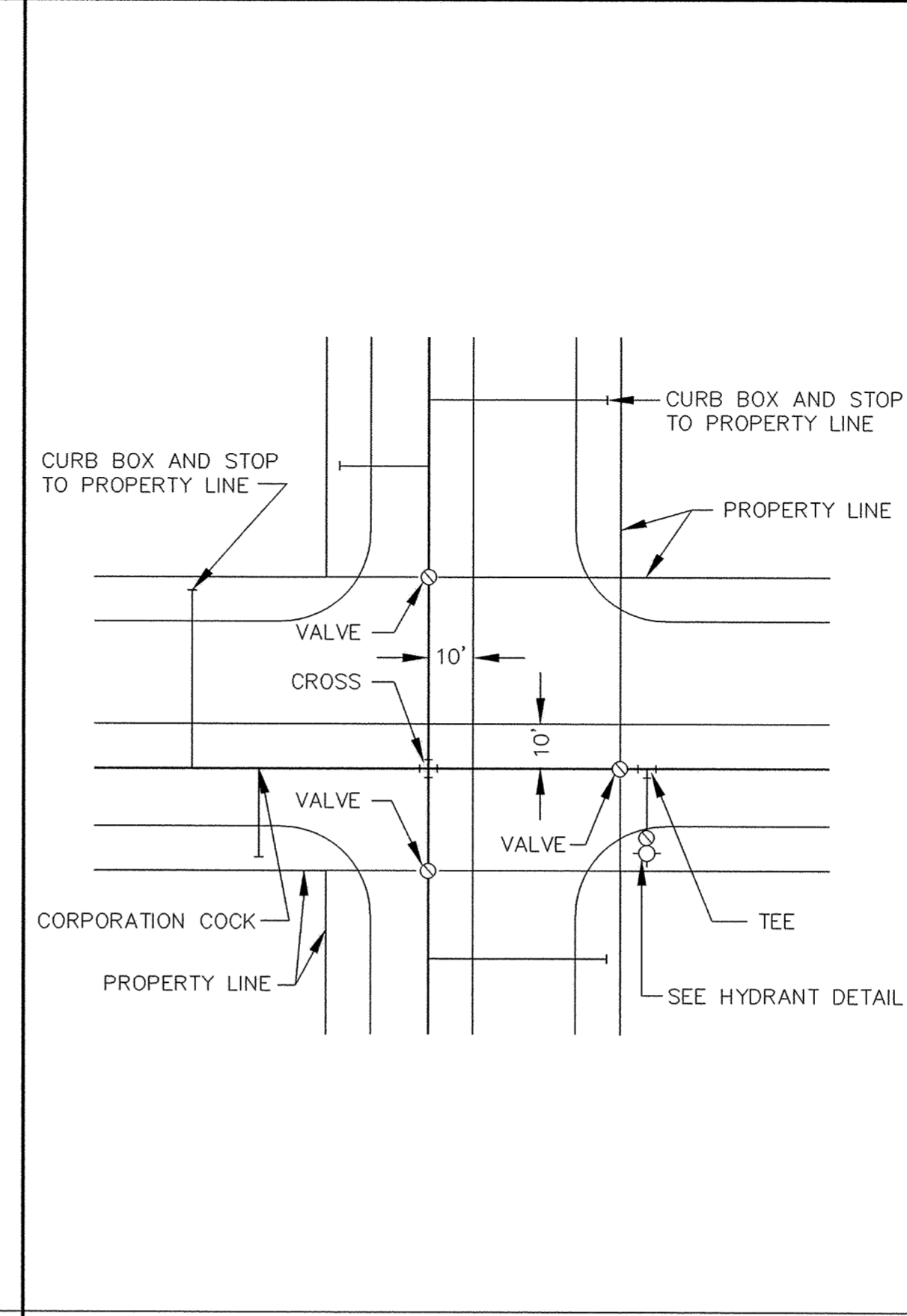


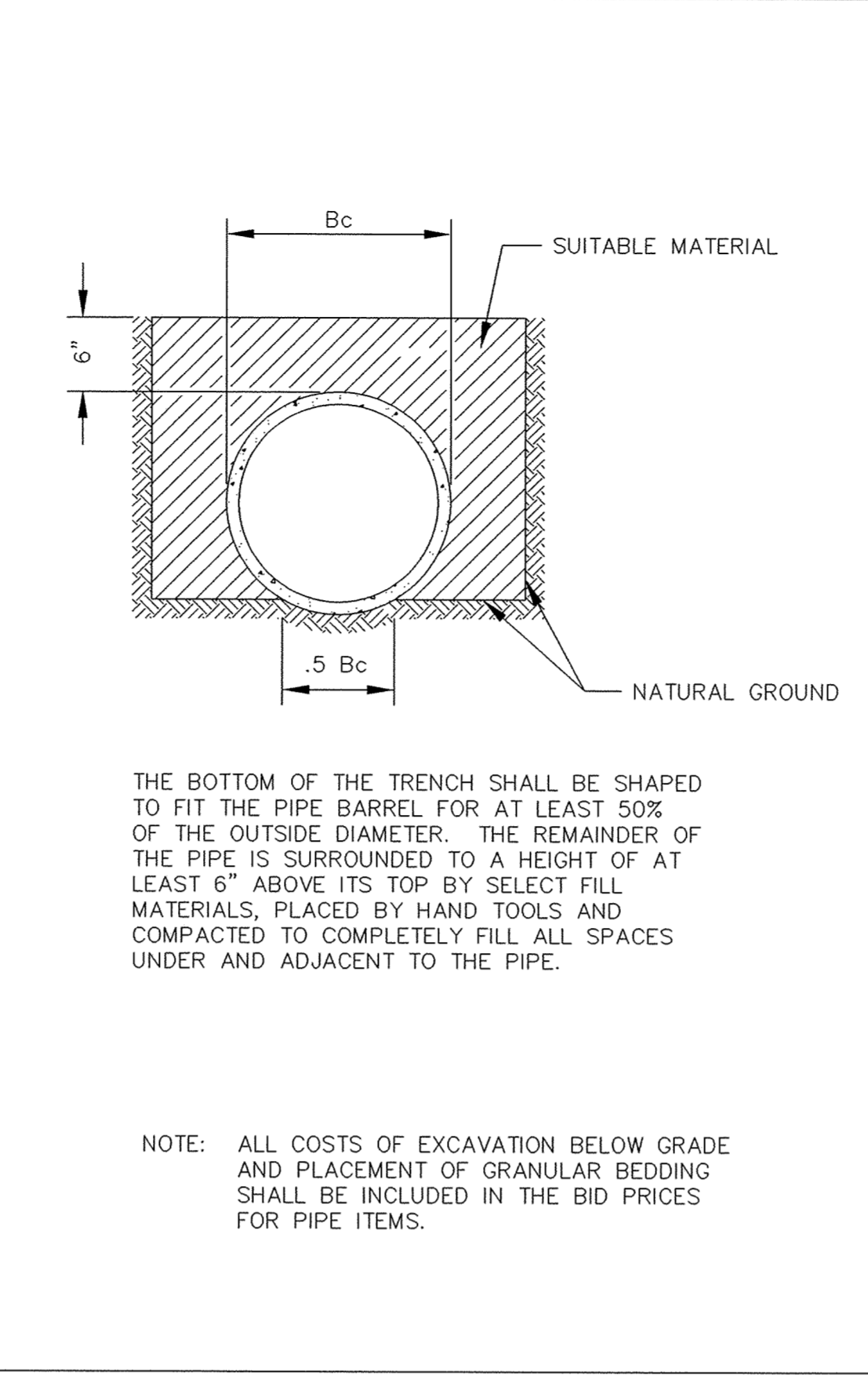
SAECO PRODUCTS • NEW HOPE, MINNESOTA
SAECO PRODUCTS • NEW HOPE, MINNESOTA
SAECO PRODUCTS • NEW HOPE, MINNESOTA
SAECO PRODUCTS • NEW HOPE, MINNESOTA



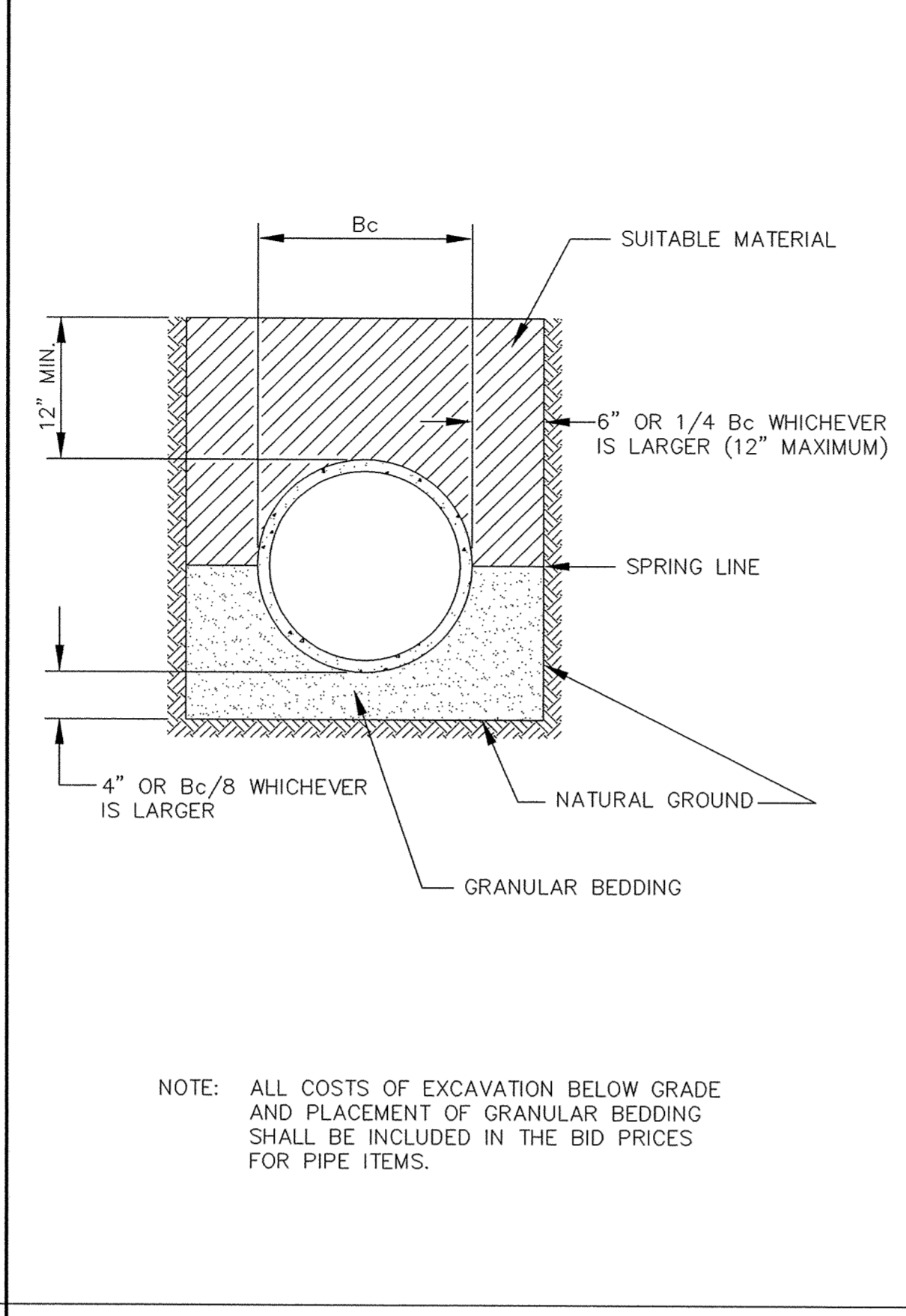
PACER HYDRANT DETAIL



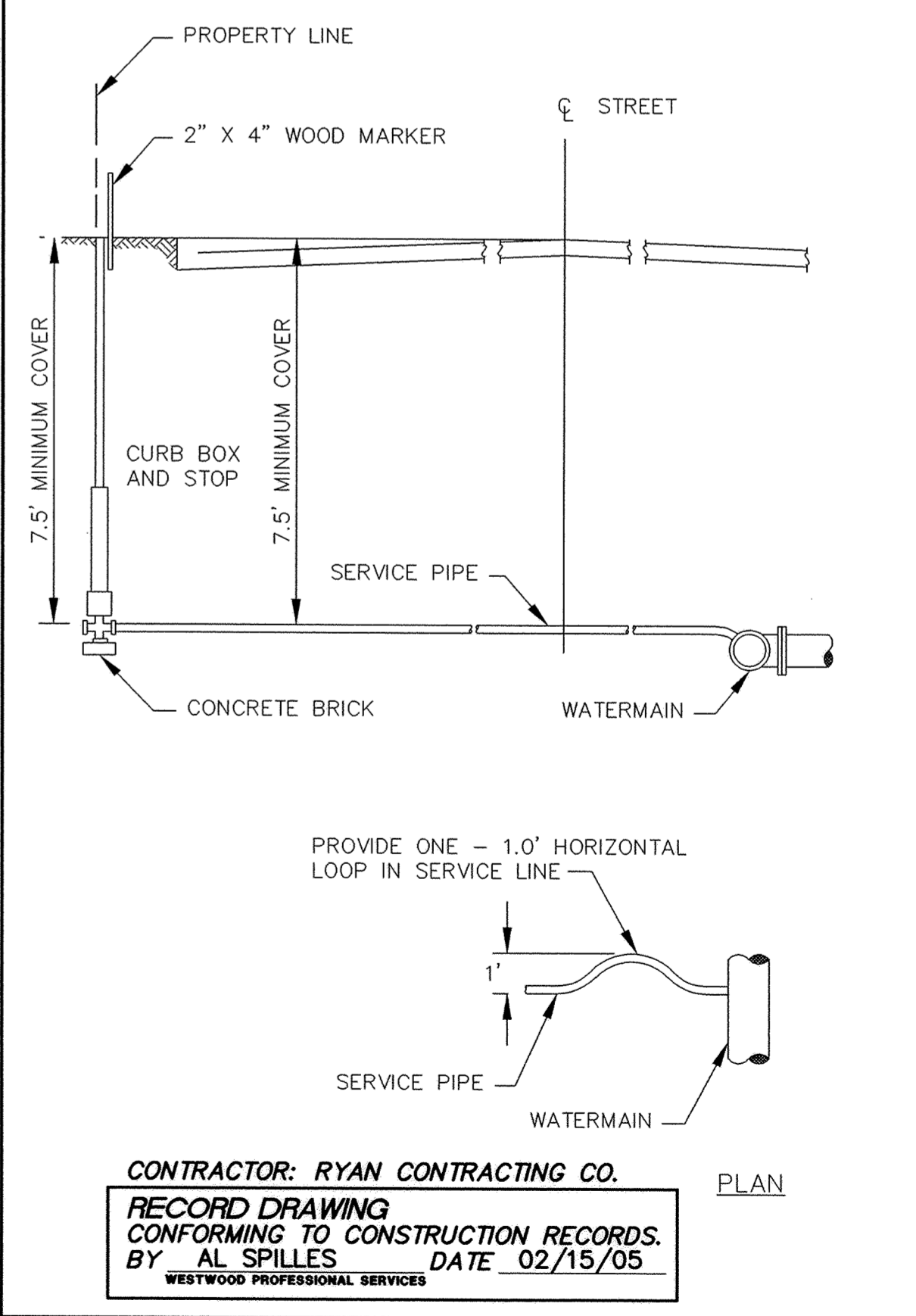
TYPICAL WATER LAYOUT



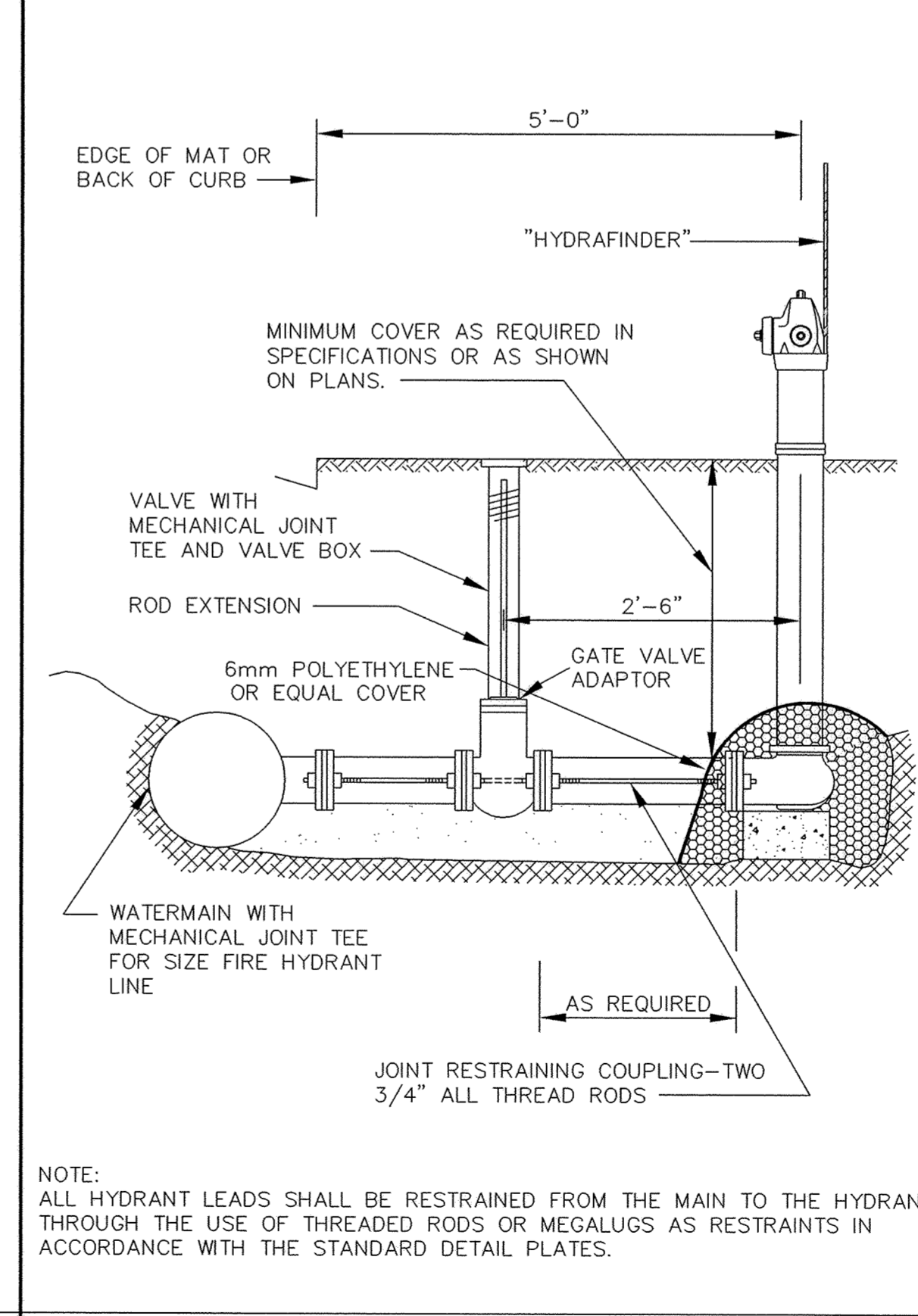
CLASS C PIPE BEDDING



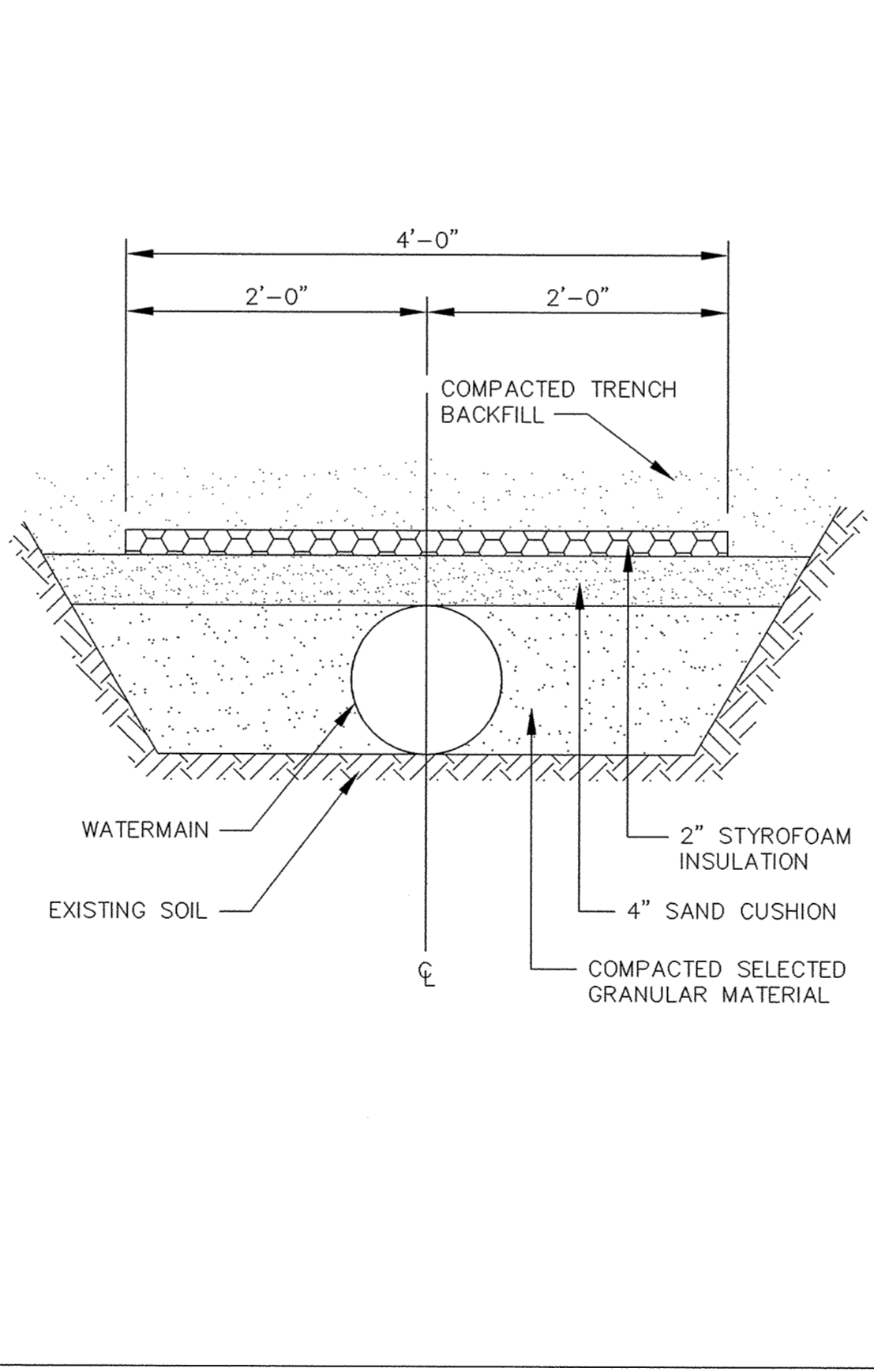
CLASS B PIPE BEDDING



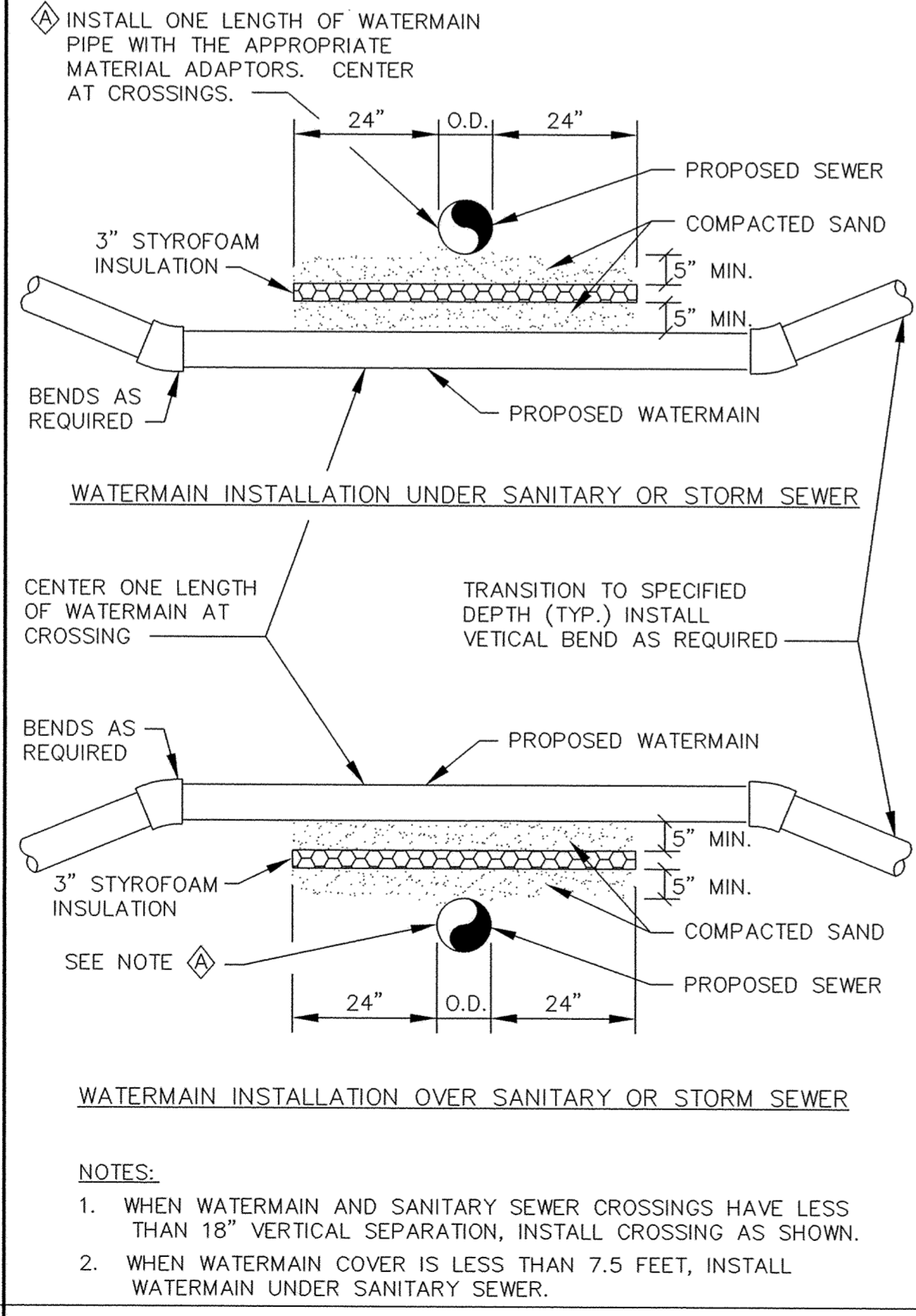
TYPICAL SERVICE DETAIL



RODDING DETAIL



PIPE INSULATION DETAIL



WATERMAIN CROSSING

Westwood Professional Services, Inc.
7599 Anagram Drive
Eden Prairie, MN 55344
Phone: 952/937-5150 Fax: 952/937-5822

PREPARED FOR:
D. R. Horton, Inc.
20860 Kenbridge Court
Lakeville, Minnesota 55044

P:\20011034\dwg\RECORD\20011034DE@2.dwg 5/3/2005 8:43:55 AM CST

DESIGNED BY: --- DRAWN BY: ---
APPROVED: --- JOB NUMBER ---
CAD DATE: April 14, 1999 11:14:59 a.m.
CAD FILE: 230000m\ER-SM.DWG

I HEREBY CERTIFY THAT THIS PLAN, SPECIFICATION, OR REPORT WAS PREPARED BY ME OR UNDER MY DIRECT SUPERVISION AND THAT I AM A DULY REGISTERED PROFESSIONAL ENGINEER UNDER THE LAWS OF THE STATE OF MINNESOTA.
DATE _____ REG. NO. _____

NO.	DATE	BY	REVISION DESCRIPTION
1	06/17/04	AS	RECORD DRAWING
2	02/15/05	GKB	RECORD DRAWING

1326 ENERGY PARK DRIVE
ST. PAUL, MINNESOTA 55108
(612) 644-4389
Howard R. Green Company
CONSULTING ENGINEERS

CITY OF ELK RIVER
TROTT BROOK FARMS SOUTH
WATER MAIN DETAILS

SHEET NO.
18
OF
21