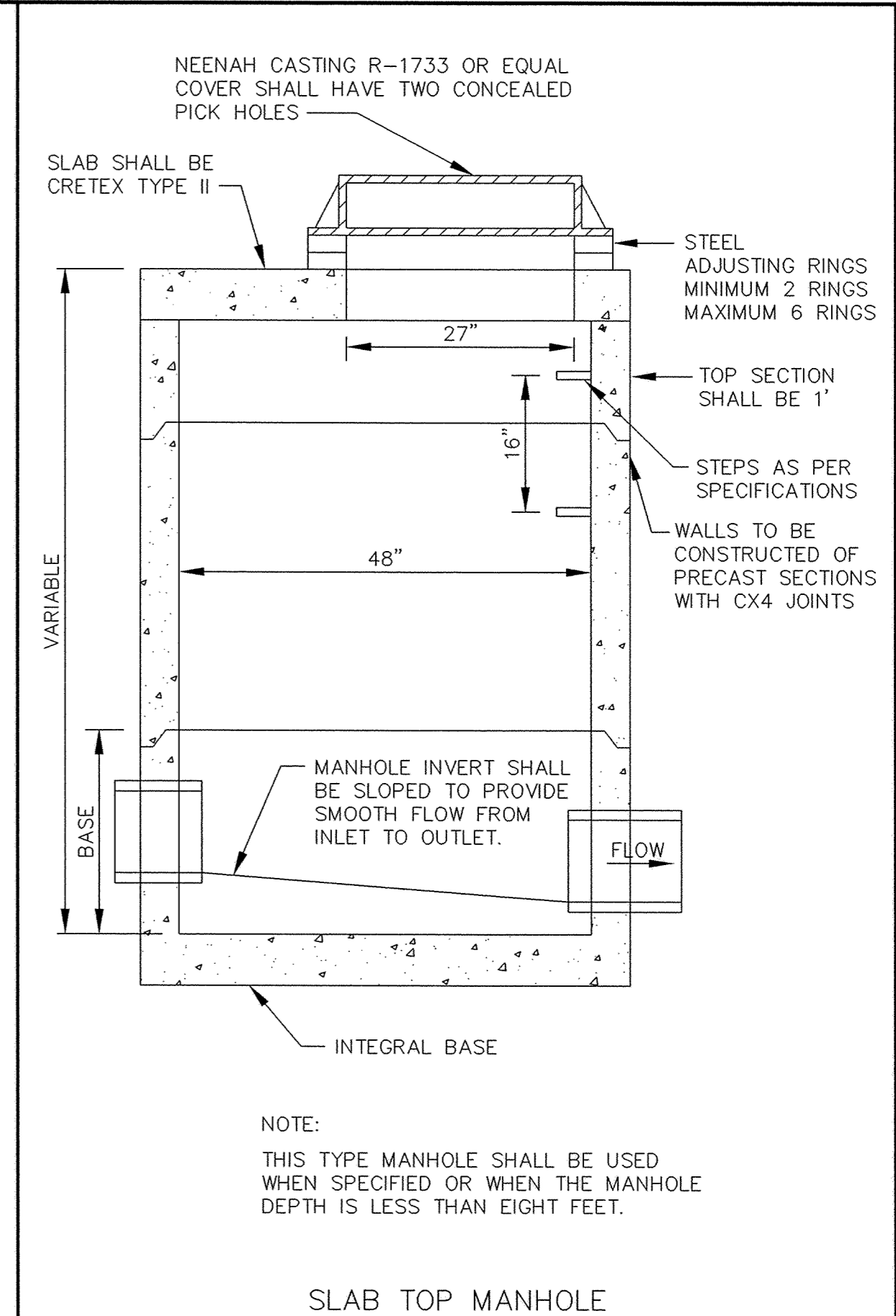
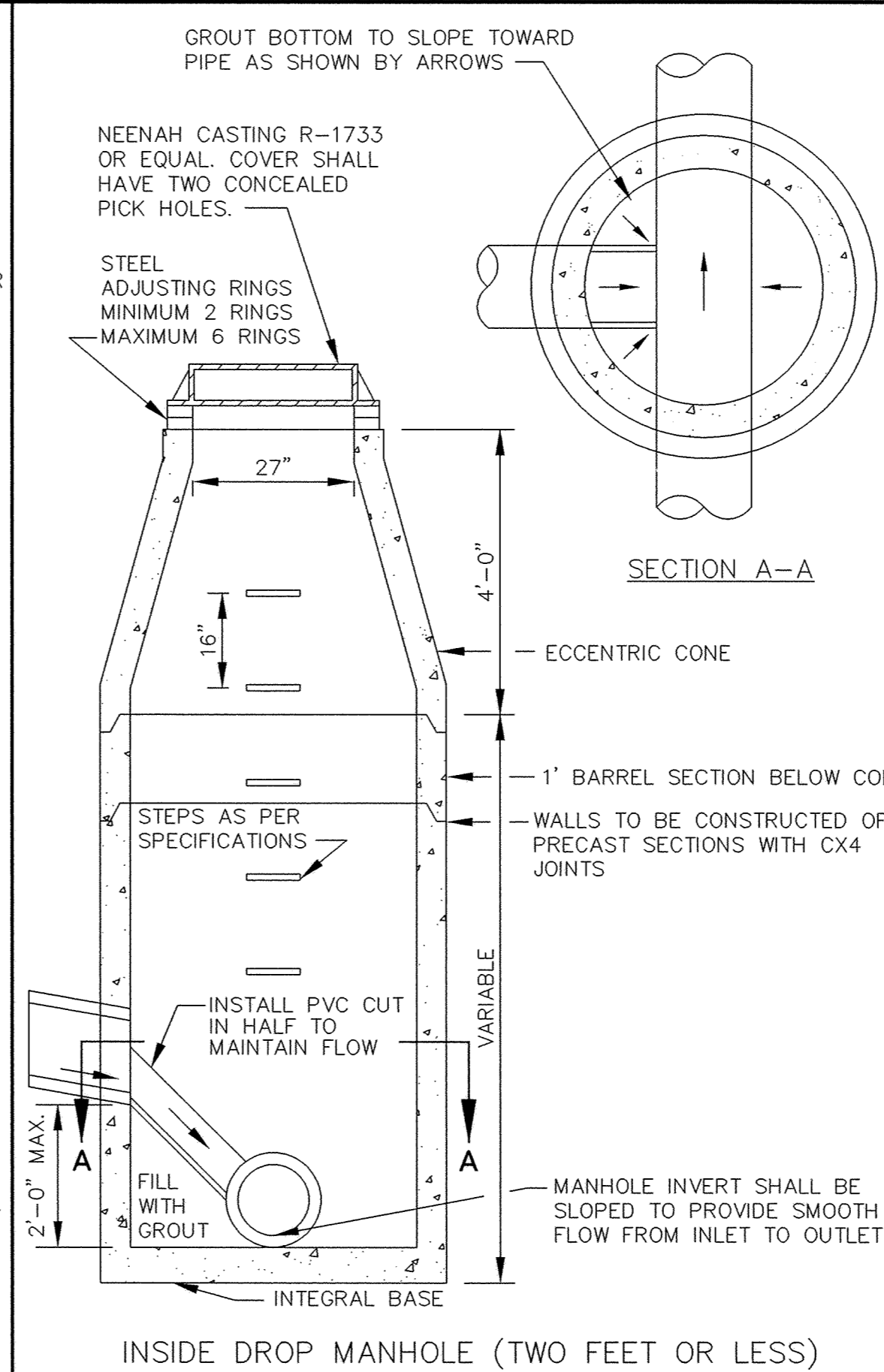


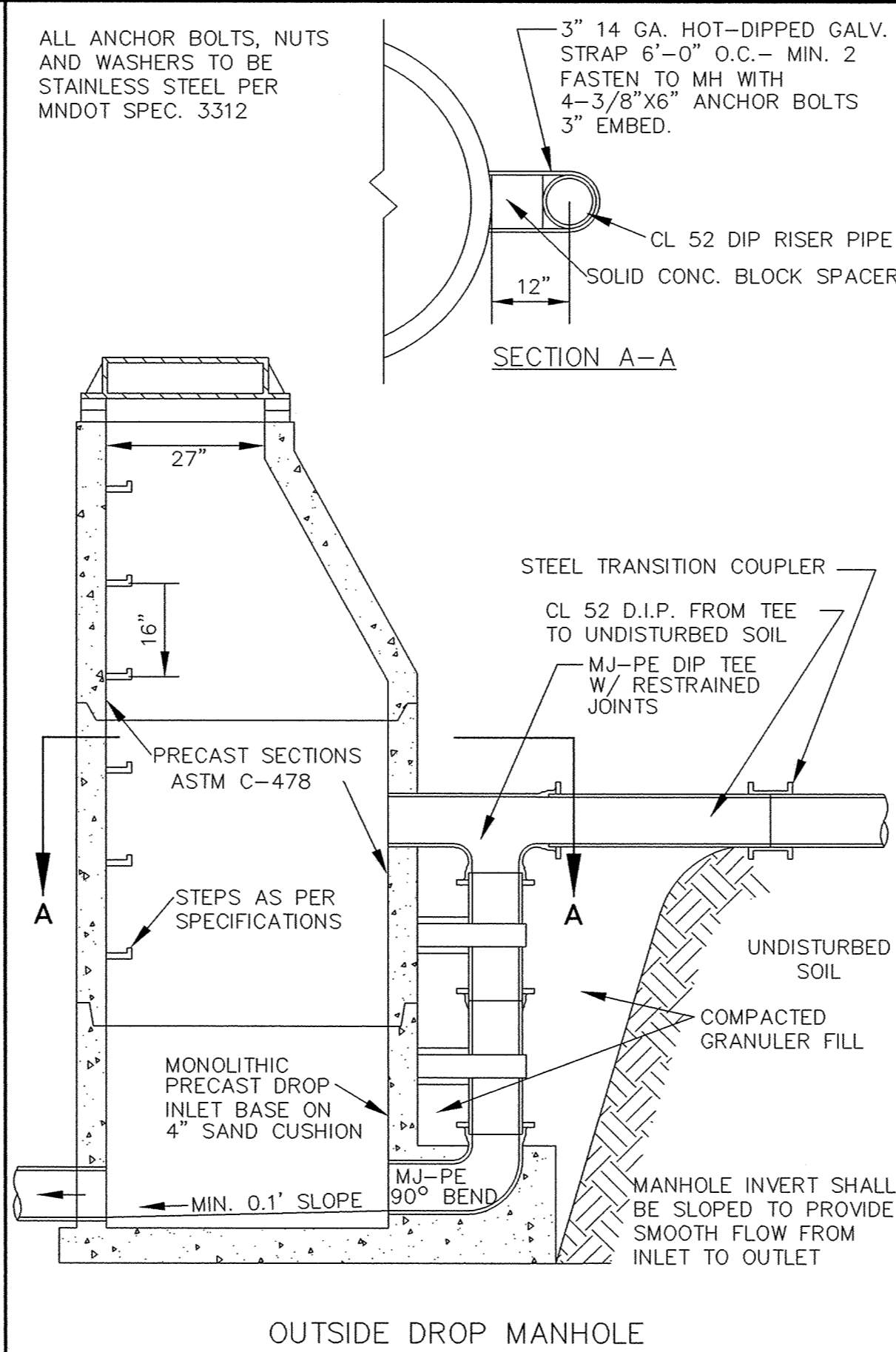
SAFECO PRODUCTS - NEW HAVEN, CONNECTICUT
REPRODUCED BY PART NUMBER 0202
PRINTED UNDER THE SUPERVISION OF THE ENGINEER



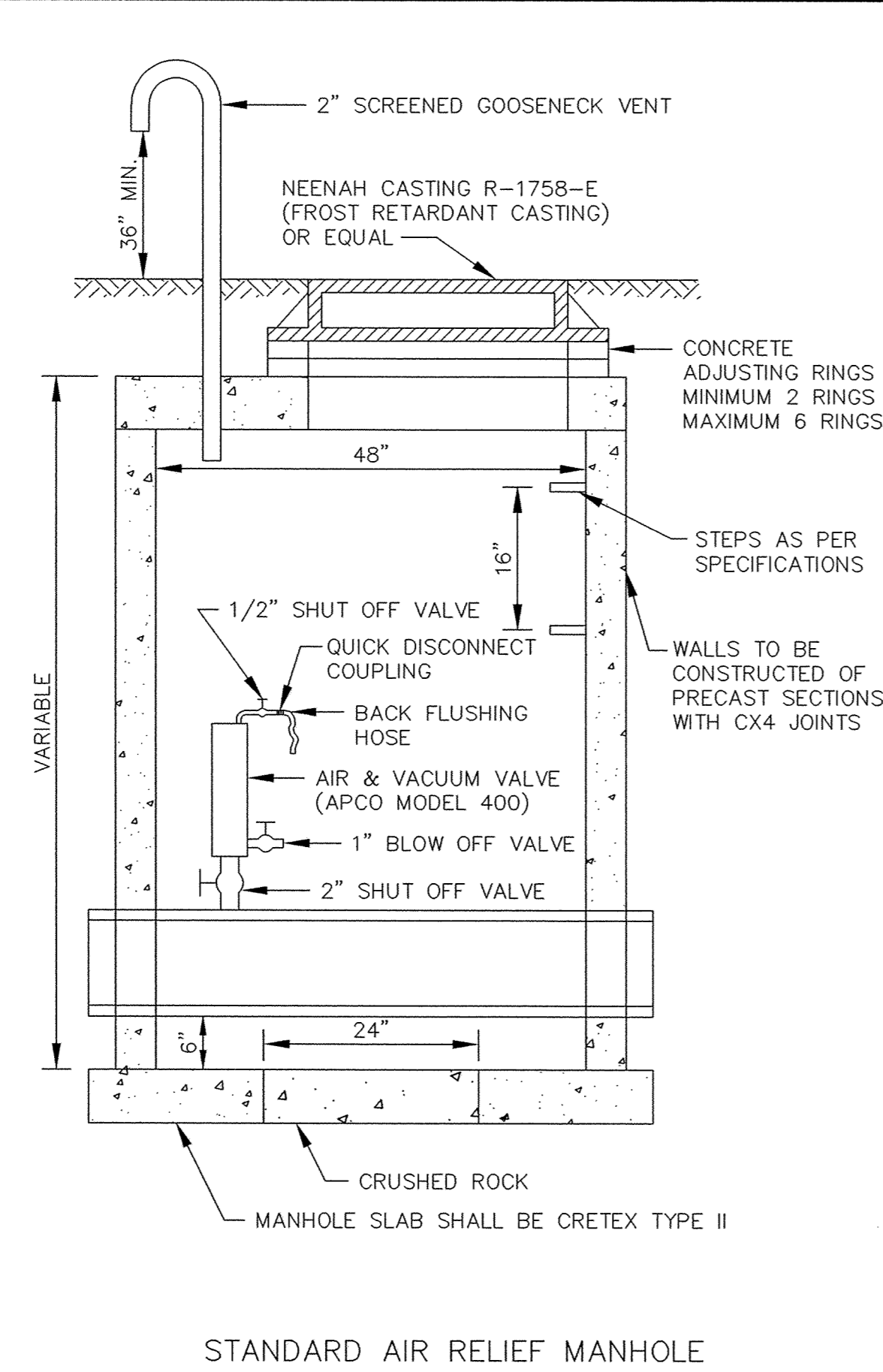
SLAB TOP MANHOLE



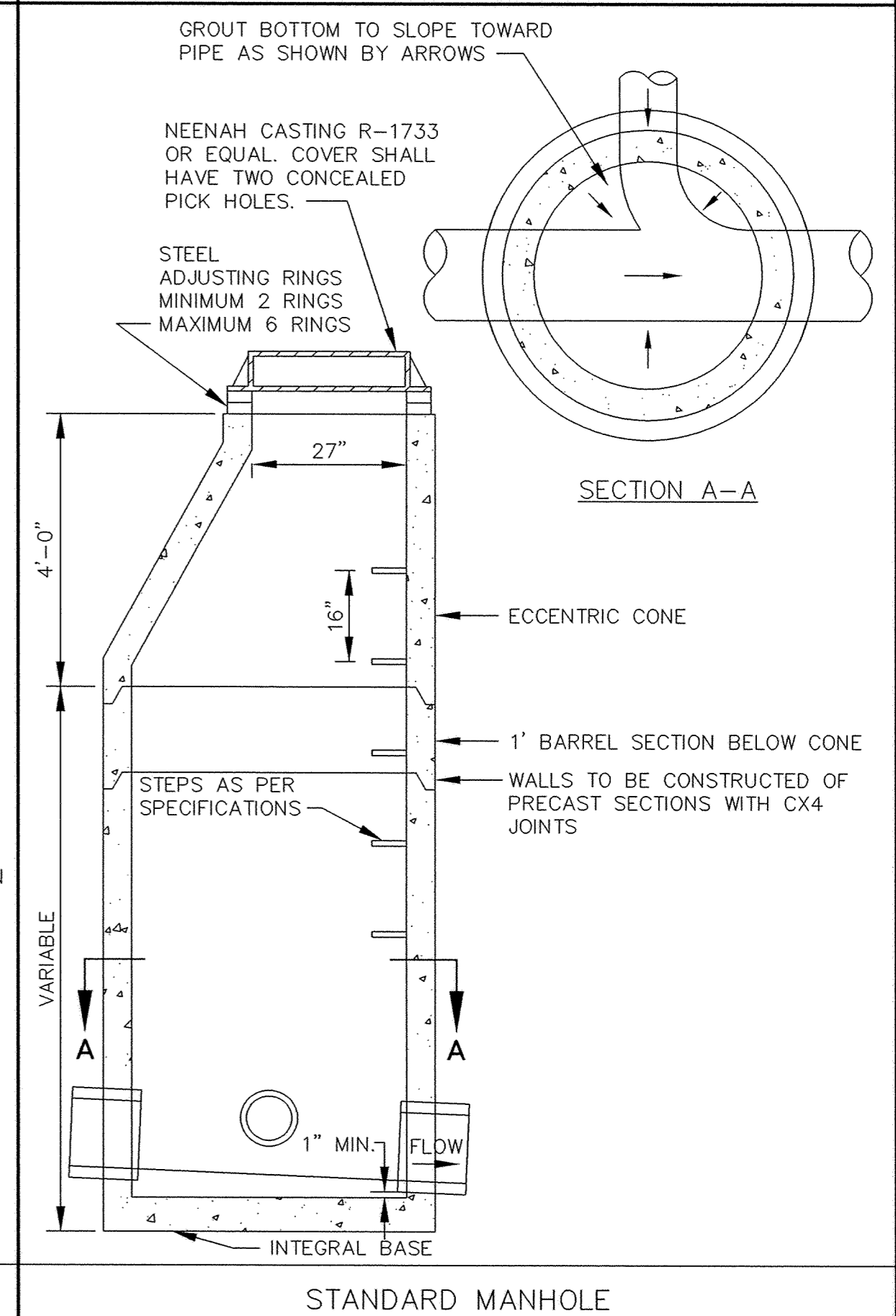
INSIDE DROP MANHOLE (TWO FEET OR LESS)



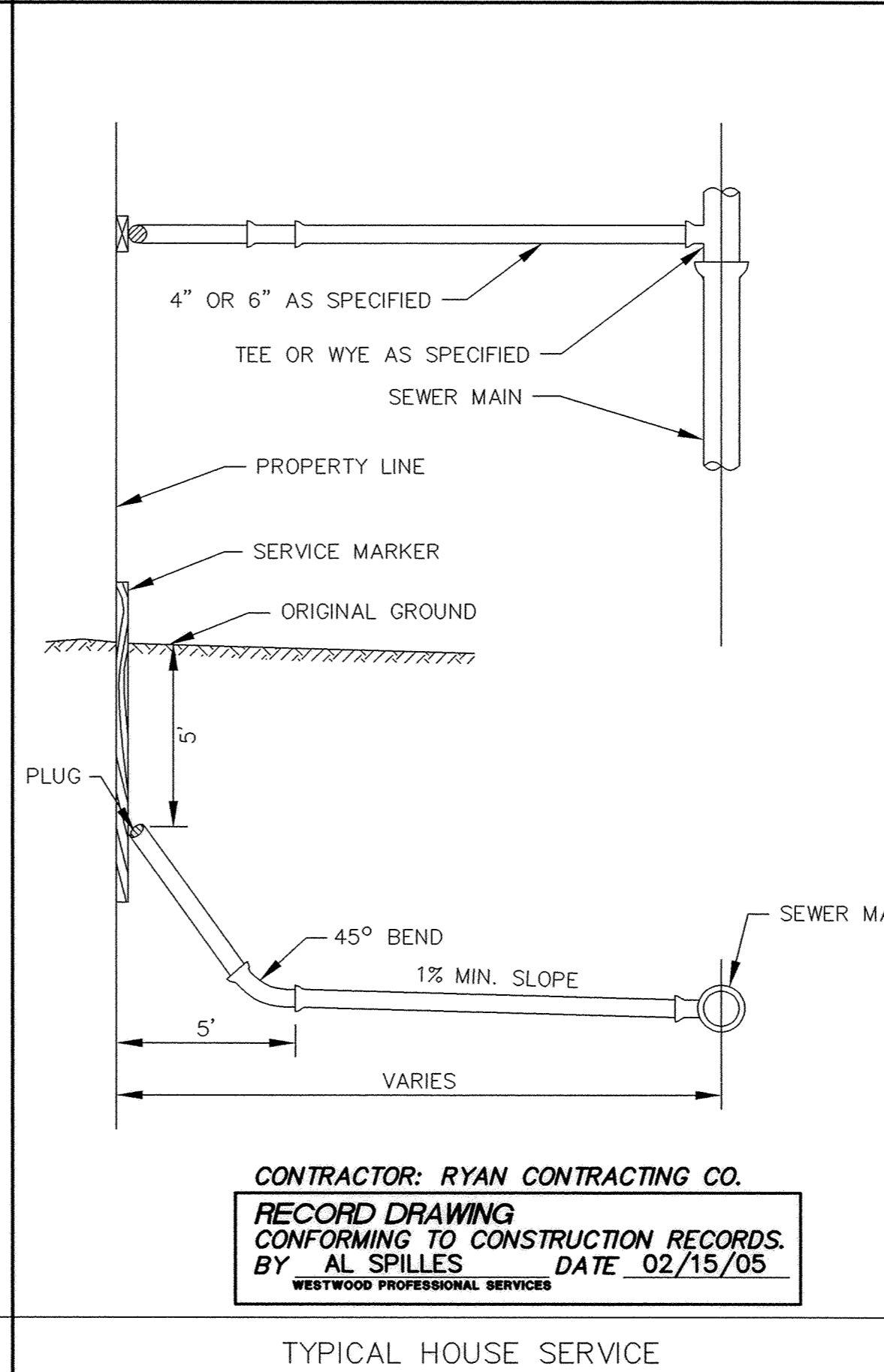
OUTSIDE DROP MANHOLE



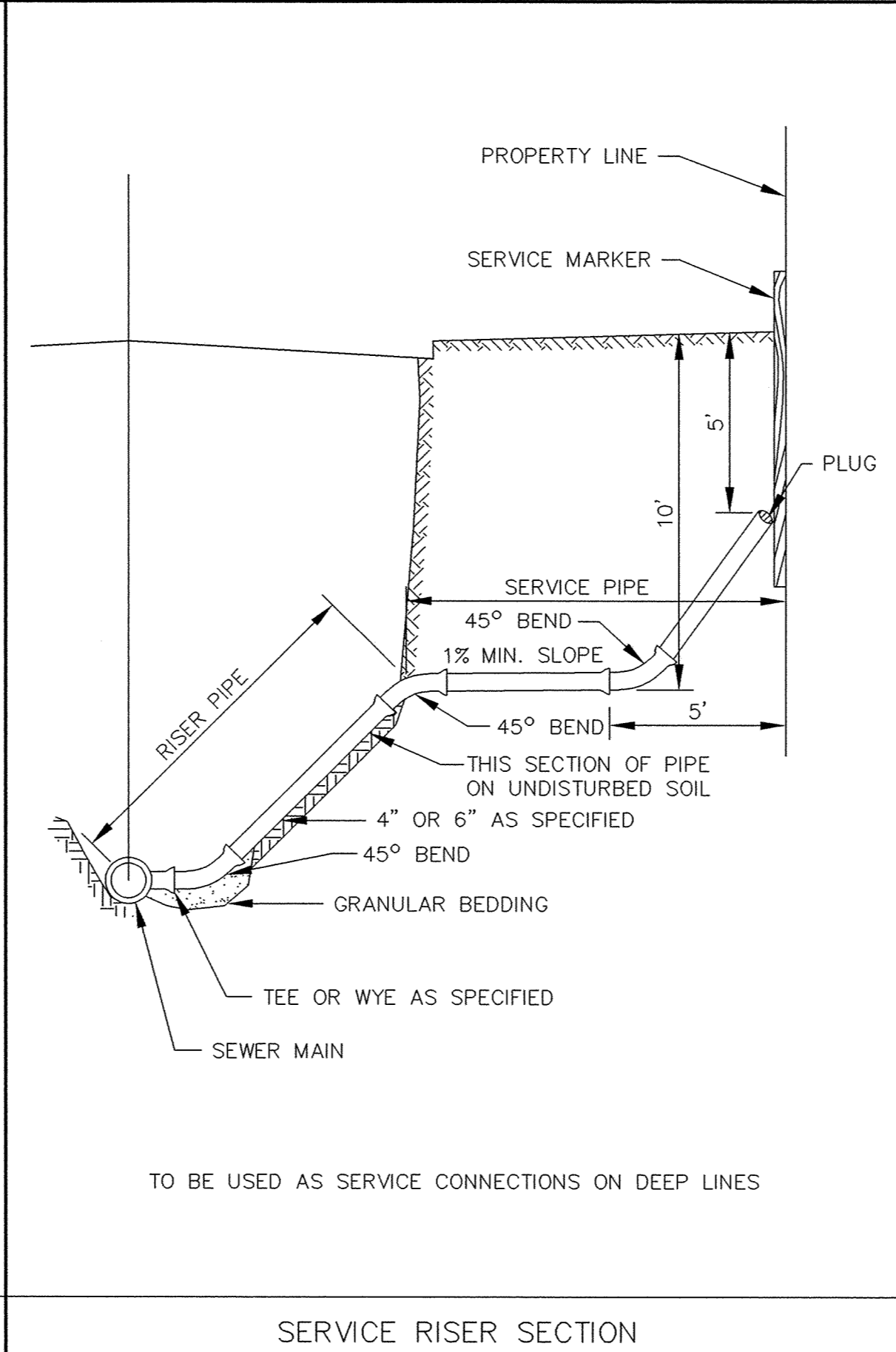
STANDARD AIR RELIEF MANHOLE



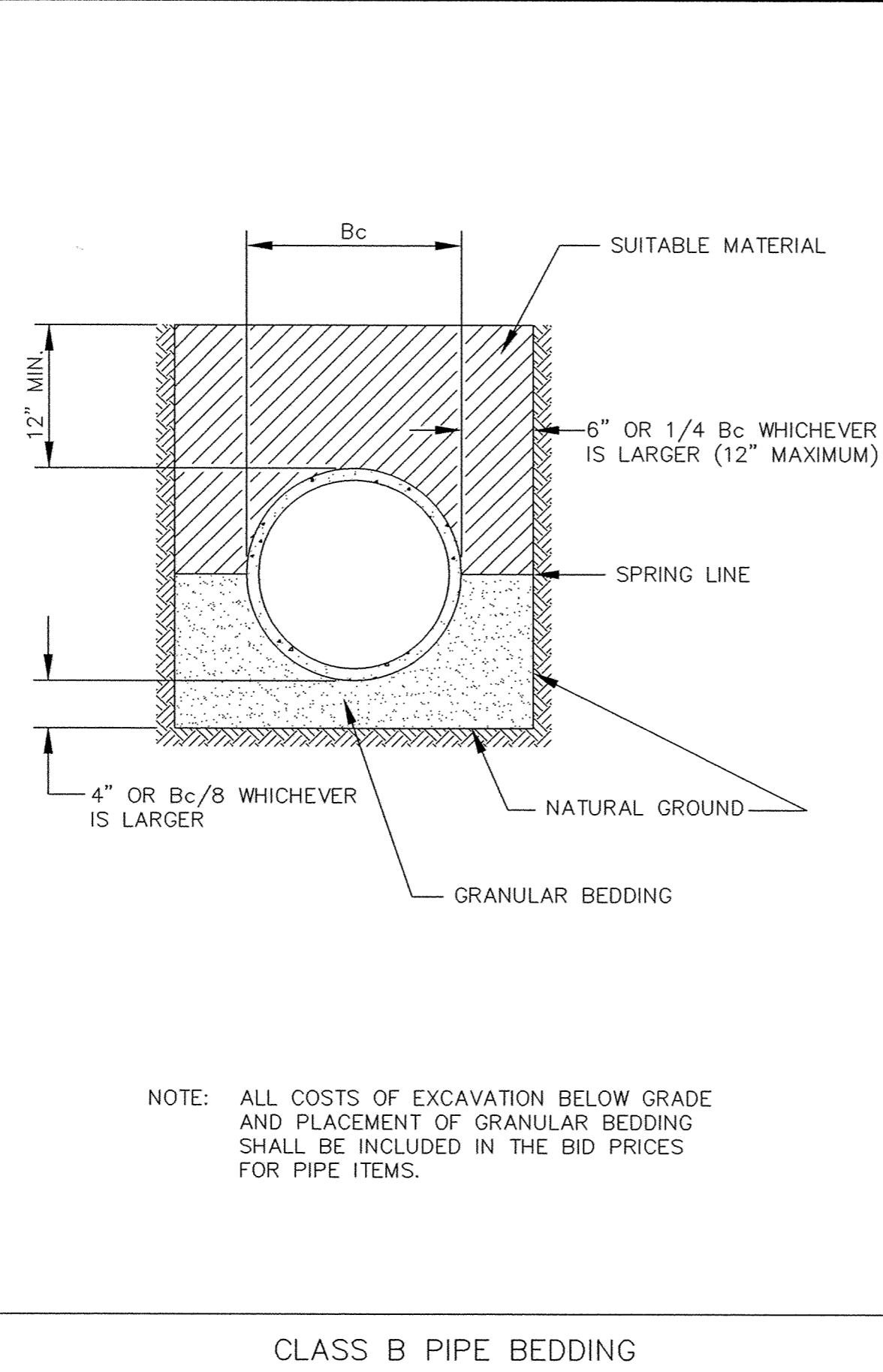
STANDARD MANHOLE



TYPICAL HOUSE SERVICE



SERVICE RISER SECTION



CLASS B PIPE BEDDING

Westwood Professional Services, Inc.
7599 Anagram Drive
Eden Prairie, MN 55344
Phone: 952/937-5150 Fax: 952/937-5822

PREPARED FOR:
D. R. Horton, Inc.
20860 Kenbridge Court
Lakeville, Minnesota 55044

NO.	DATE	BY	REVISION DESCRIPTION
1	06/17/04	AS	RECORD DRAWING
2	02/15/05	GKB	RECORD DRAWING

1326 ENERGY PARK DRIVE
ST. PAUL, MINNESOTA 55108
(612) 644-4389
Howard R. Green Company
CONSULTING ENGINEERS

CITY OF ELK RIVER
TROTT BROOK FARMS SOUTH
SANITARY SEWER DETAILS

SHEET NO.
17
OF
21

P:\20011034\dwg\RECORD\20011034.dwg 5/3/2005 8:40:36 AM CST