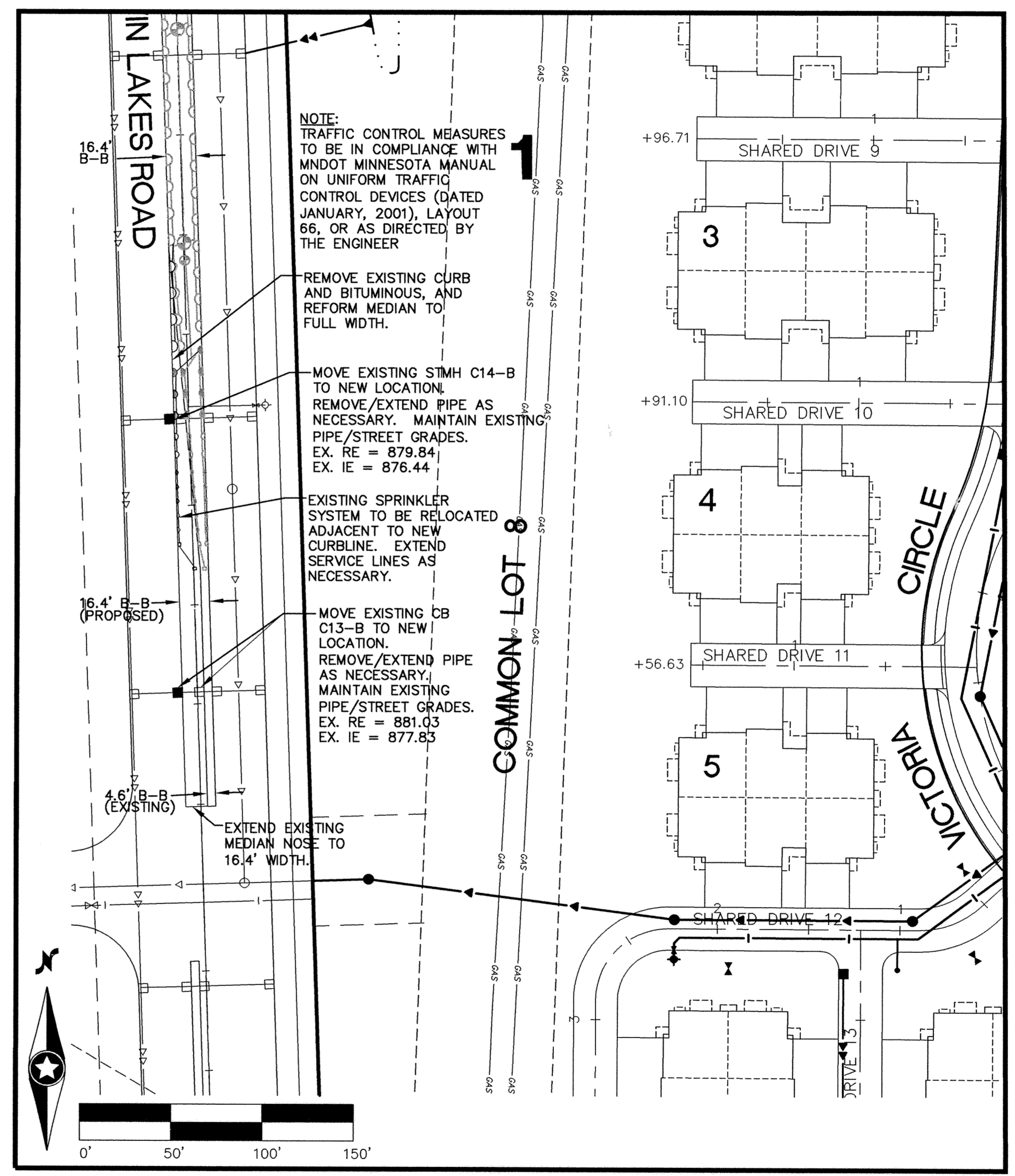
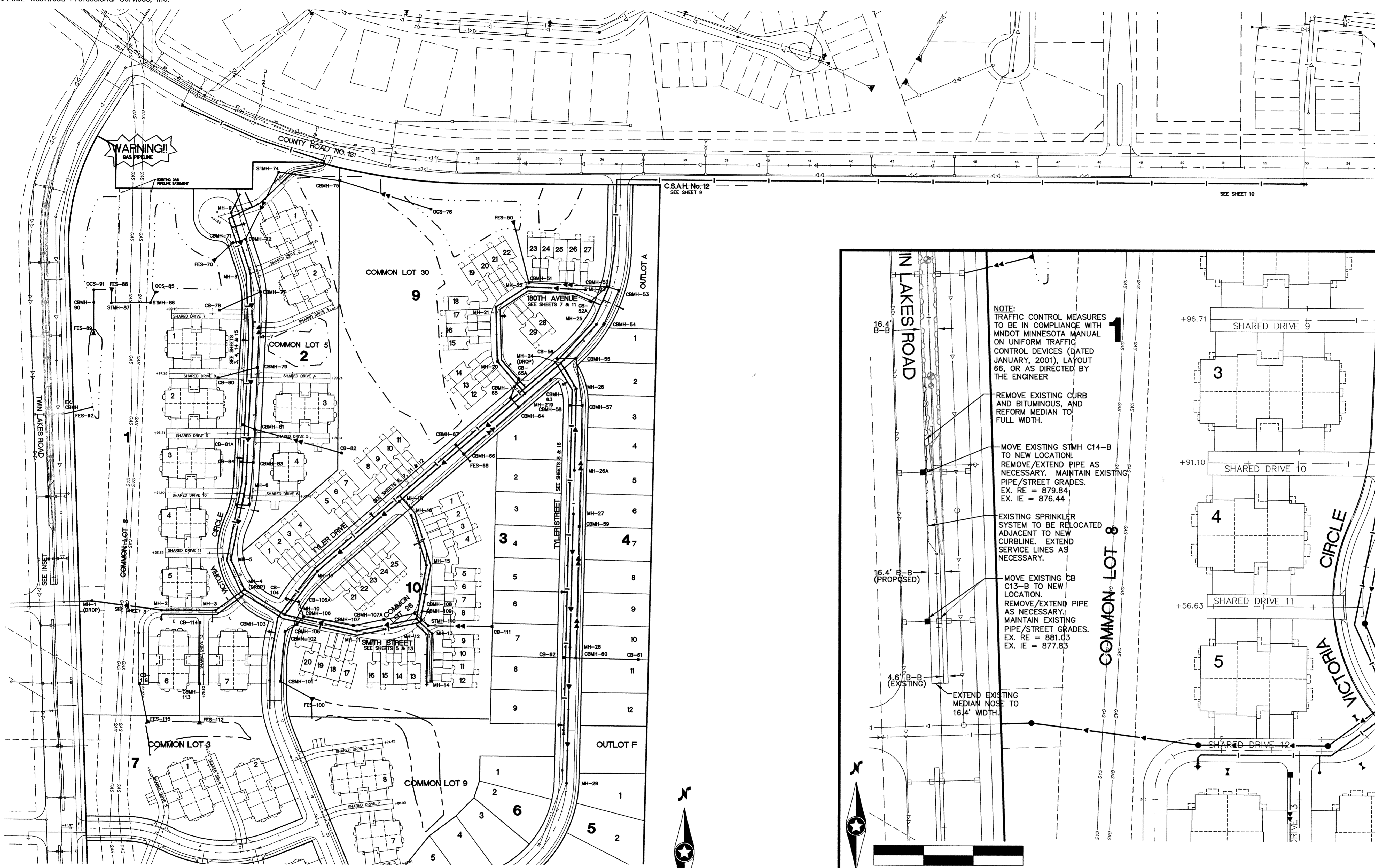


STORM SEWER CASTING SCHEDULE			
STRUCTURE			
NUMBER	TYPE	DIA.	CASTING TYPE
50	FES	30"	
51	CBMH	60"	R-3067-V
52	CBMH	96"	R-3067-V
52A	CB	2'x3'	R-3067-V
53	CBMH	66"	R-3067-V
54	CBMH	48"	R-3067-V
55	CBMH	84"	R-3067-V
56	CB	2'x3'	R-3067-V
57	CBMH	48"	R-3067-V
58	CB	2'x3'	R-3067-V
59	CBMH	48"	R-3067-V
60	CBMH	48"	R-3067-V
61	CB	27"	R-4342
62	CB	2'x3'	R-3067-V
63	CBMH	48"	R-3067-V
64	CBMH	48"	R-3067-V
65	CBMH	48"	R-3067-V
65A	CB	2'x3'	R-3067-V
66	CBMH	48"	R-3067-V
67	CB	2'x3'	R-3067-V
68	FES	12"	
70	FES	30"	
71	CBMH	60"	R-3067-V
72	CBMH	60"	R-3067-V
74	STMH	48"	R-1733
75	CBMH	48"	R-4342
76	OCS	SEE DETAIL, SHEET 21	
77	CBMH	48"	R-3067-V
78	CB	2'x3'	R-3067-V
79	CBMH	48"	R-3067-V
80	CB	2'x3'	R-3067-V
81	CBMH	60"	R-3067-V
81A	CB	2'x3'	R-3067-V
82	CB	27"	R-4342
83	CBMH	48"	R-3067-V
84	CB	2'x3'	R-3067-V
85	OCS	SEE DETAIL, SHEET 21	
86	STMH	48"	R-1733
87	STMH	48"	R-1733
88	FES	12"	
89	FES	12"	
90	CBMH	48"	R-3067-V
91	OCS	SEE DETAIL, SHEET 21	
92	FES	12"	
100	FES	24"	R-3067-V
101	CBMH	48"	R-3067-V
102	CBMH	48"	R-3067-V
103	CBMH	48"	R-3067-V
104	CB	2'x3'	R-3067-V
105	CBMH	48"	R-3067-V
106	CBMH	48"	R-3067-V
106A	CB	2'x3'	R-3067-V
107	CBMH	48"	R-3067-V
107A	CBMH	48"	R-3067-V
108	CBMH	48"	R-3067-V
109	CBMH	48"	R-3067-V
110	STMH	48"	R-1733
111	CB	27"	R-4342
112	FES	15"	
113	CBMH	48"	R-3067-V
114	CB	2'x3'	R-3067-V
115	FES	12"	
116	CB	2'x3'	R-3067-V

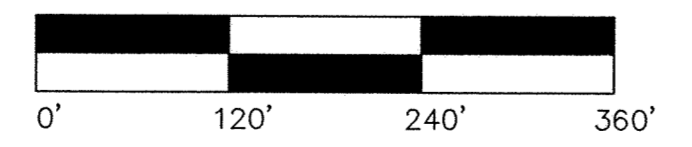


CONTRACTOR: RYAN CONTRACTING CO.
 RECORD DRAWING CONFORMING TO CONSTRUCTION RECORDS. BY AL SPILLES DATE 02/15/05
 WESTWOOD PROFESSIONAL SERVICES

LATEST REVISION DATE: 02/15/05
 E-3 200110340A01.DWG
 Date: 05/28/02 Sheet: 2 OF 21

LEGEND

FUTURE	EXISTING	PROPOSED
Sanitary Sewer	Sanitary Sewer	Sanitary Sewer
Water	Water	Water
Hyd. w/Valve	Hyd. w/Valve	Hyd. w/Valve
Storm Sewer	Storm Sewer	Storm Sewer



Westwood Professional Services, Inc.
 7599 Anagram Drive
 Eden Prairie, MN 55344
 Phone: 952/937-5150 Fax: 952/937-5822

I hereby certify that this plan was prepared by me or under my direct supervision and that I am a duly licensed PROFESSIONAL ENGINEER under the laws of the State of Minnesota.
 Francis D. Hagen, II
 Date: 02/15/05 License No. 17716

Revisions:
 06/27/02 City Review-RNS
 08/01/02 Add G.V.'s for Villas-RNS
 02/06/03 Revise Grades NE Area-CLJ
 08/17/04 RECORD DRAWING (AS/CRK)
 02/15/05 RECORD DRAWING-CITY REVS. (CRK)

Designed: JMM/FDH, II
Checked: FDH, II
Drawn: WH/RNS
Record Drawing by/date: GKB 2/15/05

Prepared for:
D. R. Horton, Inc. - Minnesota
 20860 Kenbridge Court, Suite 100
 Lakeville, Minnesota 55044

Trott Brook Farms South
 Elk River, Minnesota

Overall Plan

DRAWING NUMBER

DRAWING NUMBER

DRAWING NUMBER

DRAWING NUMBER
 TROTTS.02
 2

P:\20011034.dwg RECD\20011034.dwg 2/14/2005 8:14:37 AM CST