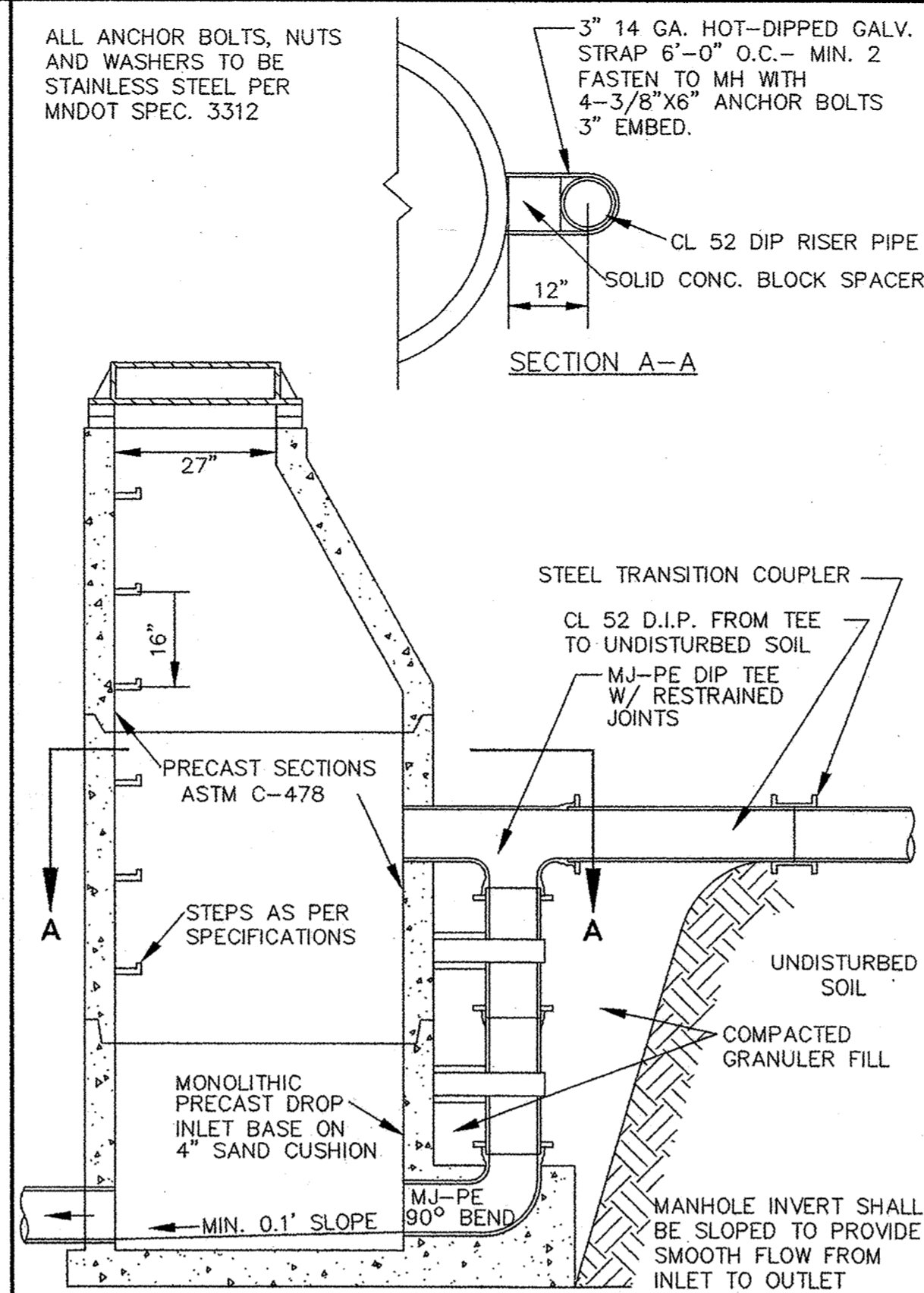
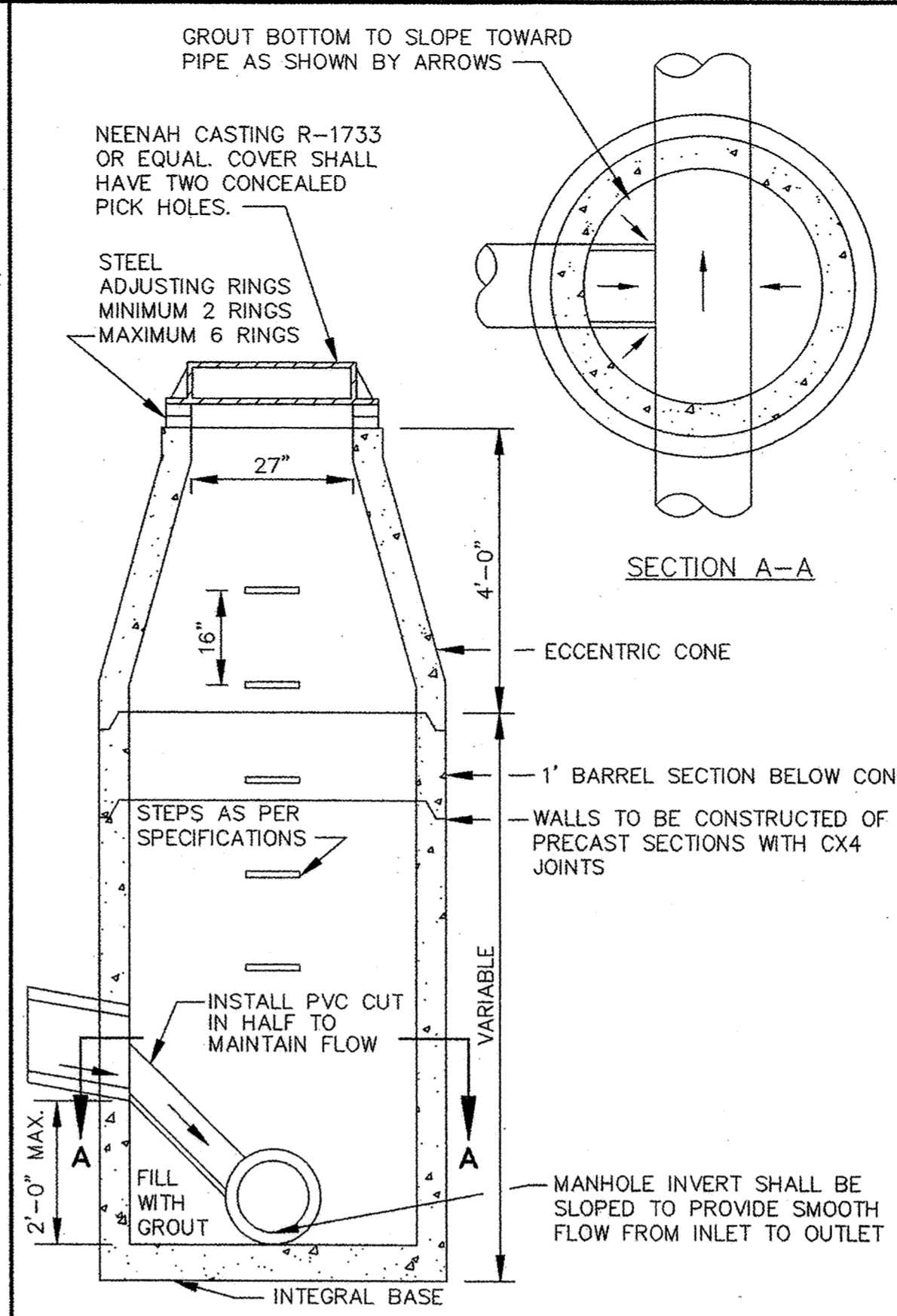


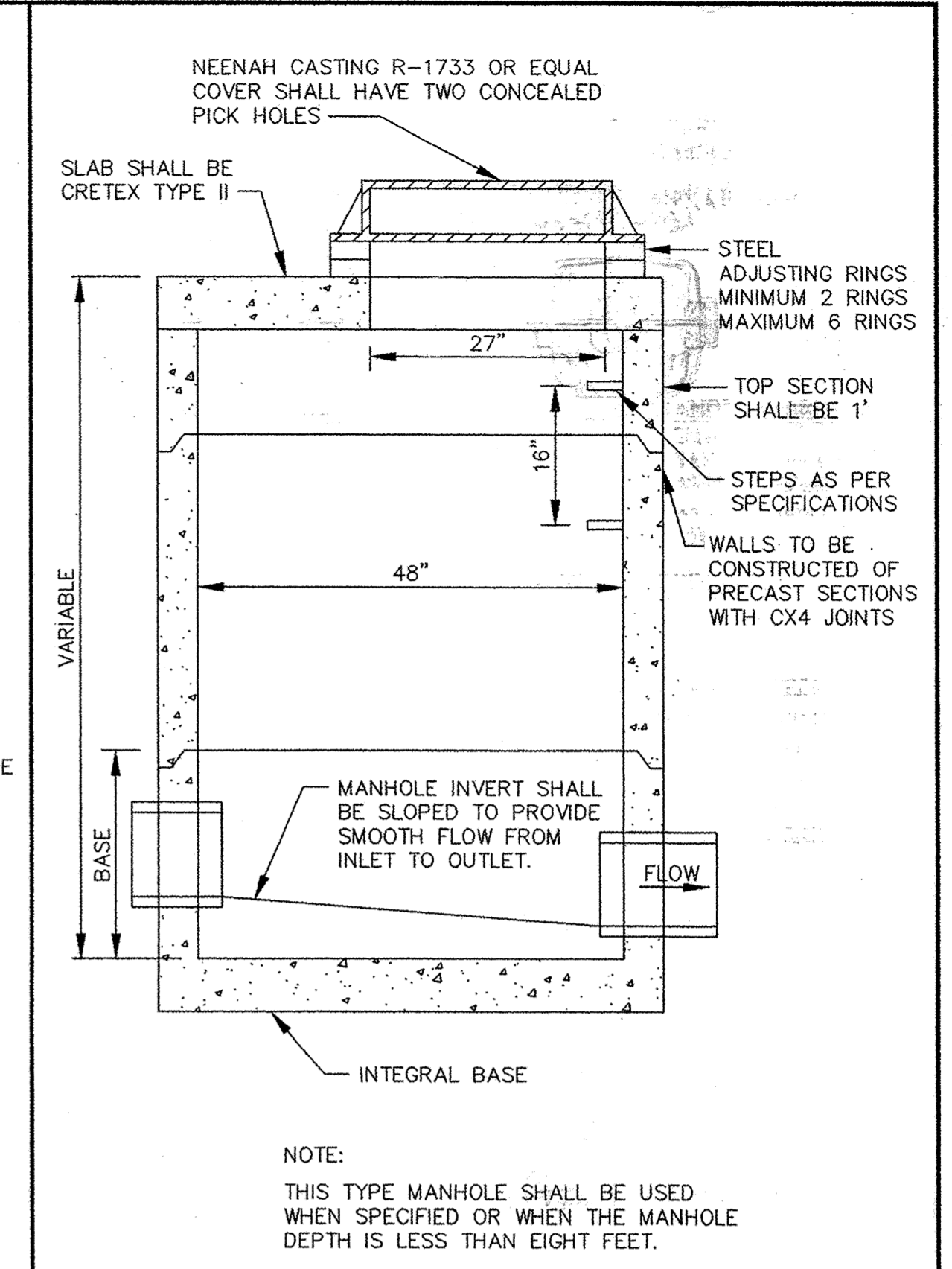
STANDARD AIR RELIEF MANHOLE



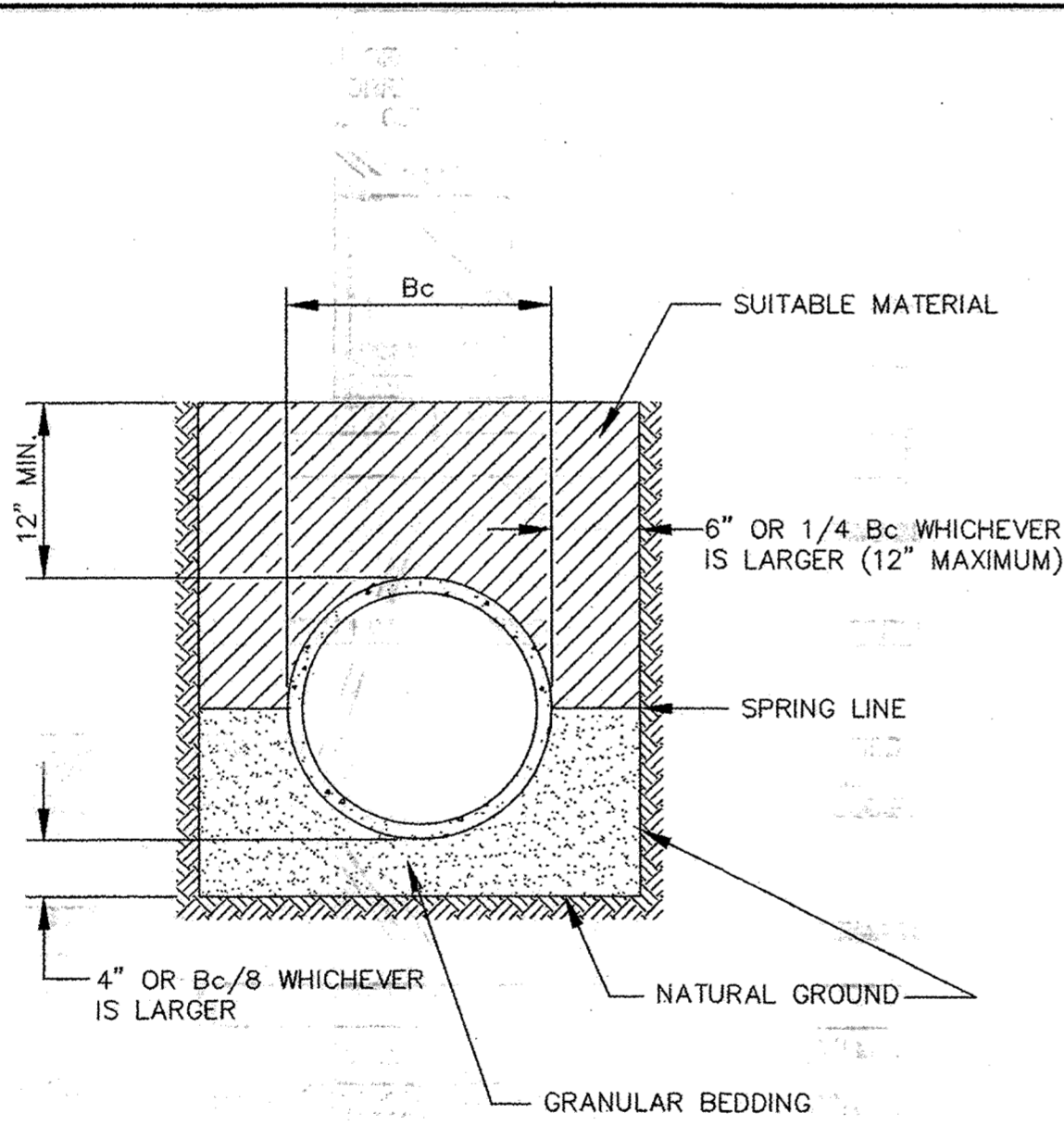
OUTSIDE DROP MANHOLE



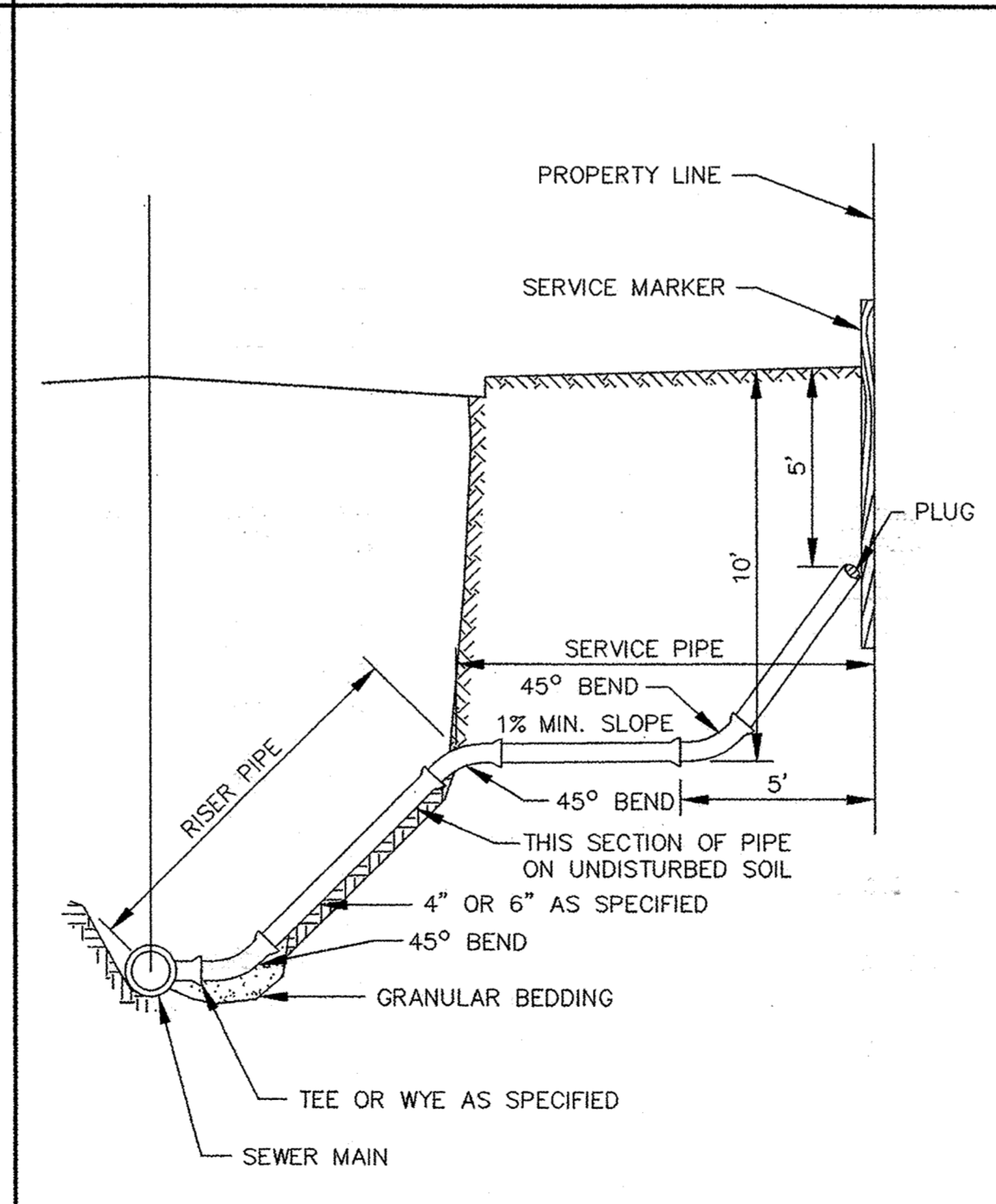
INSIDE DROP MANHOLE (TWO FEET OR LESS)



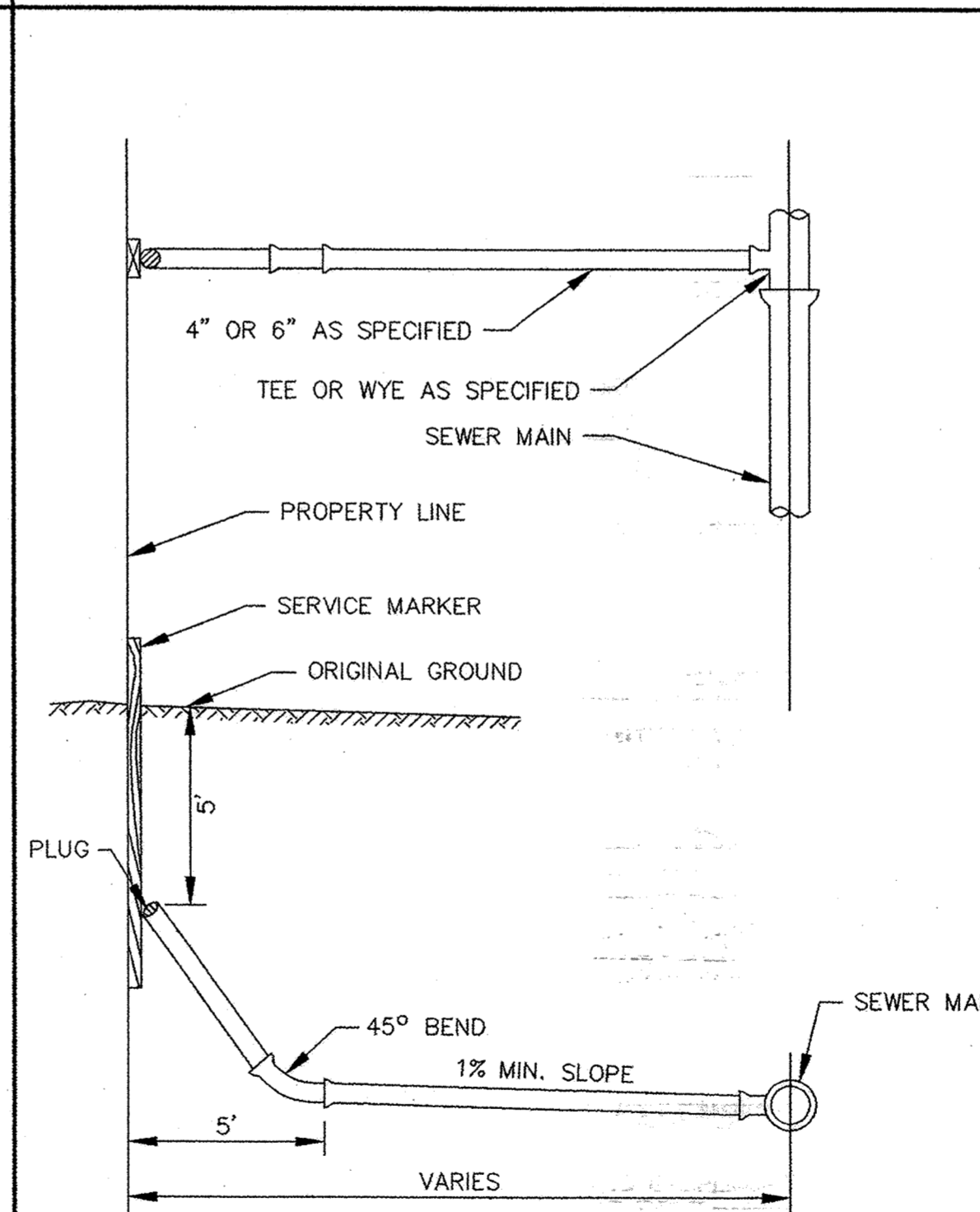
SLAB TOP MANHOLE



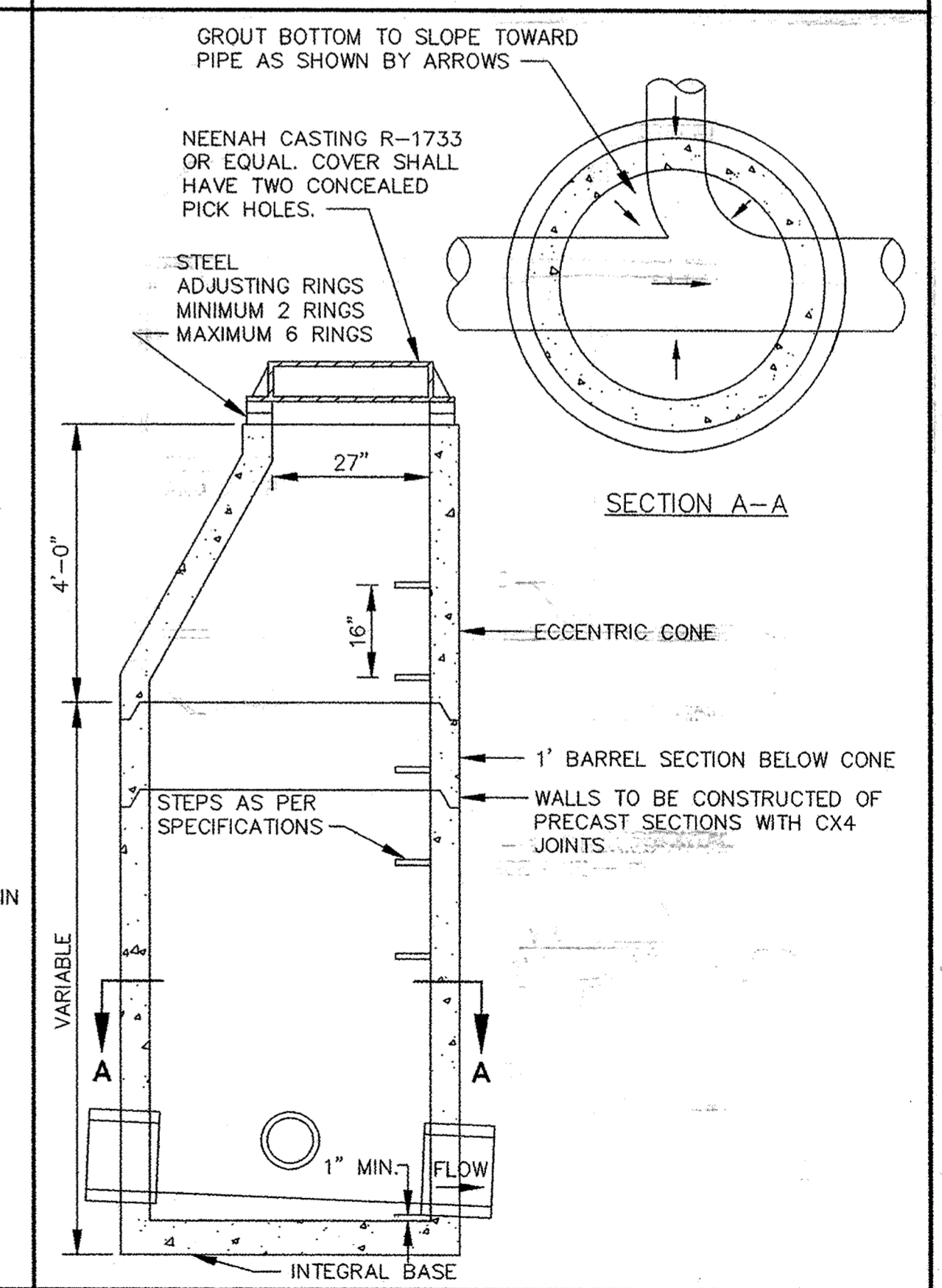
CLASS B PIPE BEDDING



SERVICE RISER SECTION



TYPICAL HOUSE SERVICE



STANDARD MANHOLE

CONTRACTOR: Ryan Contracting Co.  
8700 13th Ave. East  
Shakopee, MN 55379  
# 952-894-3200

RECORD DRAWING  
CONFORMING TO CONSTRUCTION RECORDS.  
BY STEVE PHILIPSEN DATE 12/08/06  
WESTWOOD PROFESSIONAL SERVICES

**Westwood**  
Westwood Professional Services, Inc.  
7699 Anagram Drive  
Eden Prairie, MN 55344  
PHONE 952-937-5150  
FAX 952-937-5822  
TOLL FREE 1-888-937-5150  
www.westwoodps.com

PREPARED FOR:  
**D.R. Horton, Inc.**  
20860 Kenbridge Court, Suite 100  
Lakeville, MN 55044

NOTE: ALL COSTS OF EXCAVATION BELOW GRADE AND PLACEMENT OF GRANULAR BEDDING SHALL BE INCLUDED IN THE BID PRICES FOR PIPE ITEMS.

TO BE USED AS SERVICE CONNECTIONS ON DEEP LINES

DESIGNED BY: \_\_\_\_\_ DRAWN BY: \_\_\_\_\_  
APPROVED: \_\_\_\_\_ JOB NUMBER \_\_\_\_\_  
CAD DATE: April 14, 1999 11:14:59 a.m.  
CAD FILE: 230000m\ER-SM.DWG

I HEREBY CERTIFY THAT THIS PLAN, SPECIFICATION, OR RECORD WAS PREPARED BY ME OR UNDER MY DIRECT SUPERVISION AND THAT I AM A DULY REGISTERED PROFESSIONAL ENGINEER UNDER THE LAWS OF THE STATE OF MINNESOTA.  
DATE: 09/21/06 REG. NO. \_\_\_\_\_

NO.	DATE	BY	REVISION DESCRIPTION
09/21/06			RECORD DRAWING (SGM/SRB)

1326 ENERGY PARK DRIVE  
ST. PAUL, MINNESOTA 55108  
(612) 644-4389  
**Howard R. Green Company**  
CONSULTING ENGINEERS

CITY OF ELK RIVER  
TROTT BROOK FARMS 11TH ADDITION  
SANITARY SEWER DETAILS

SHEET NO.  
7  
OF  
10