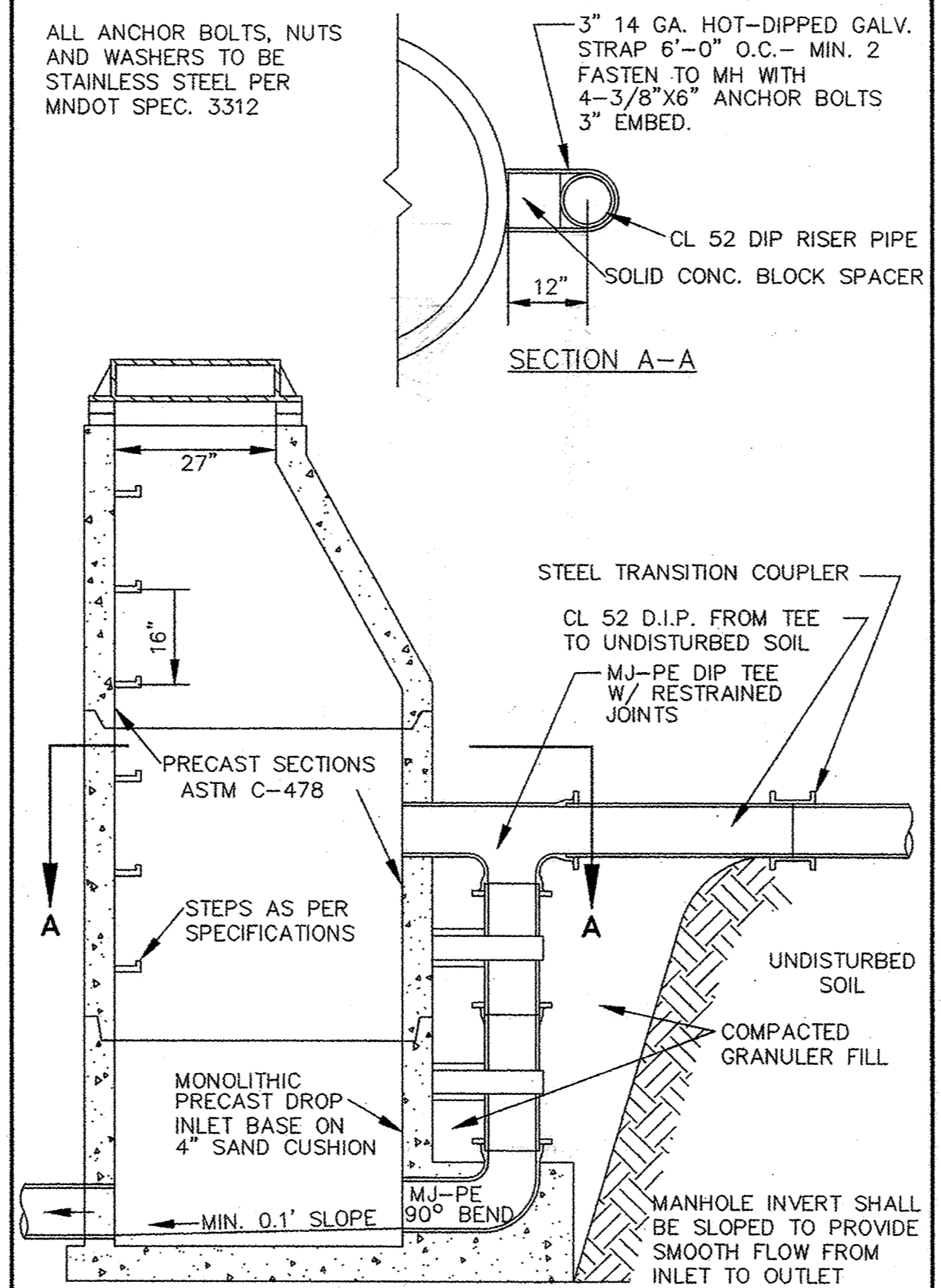
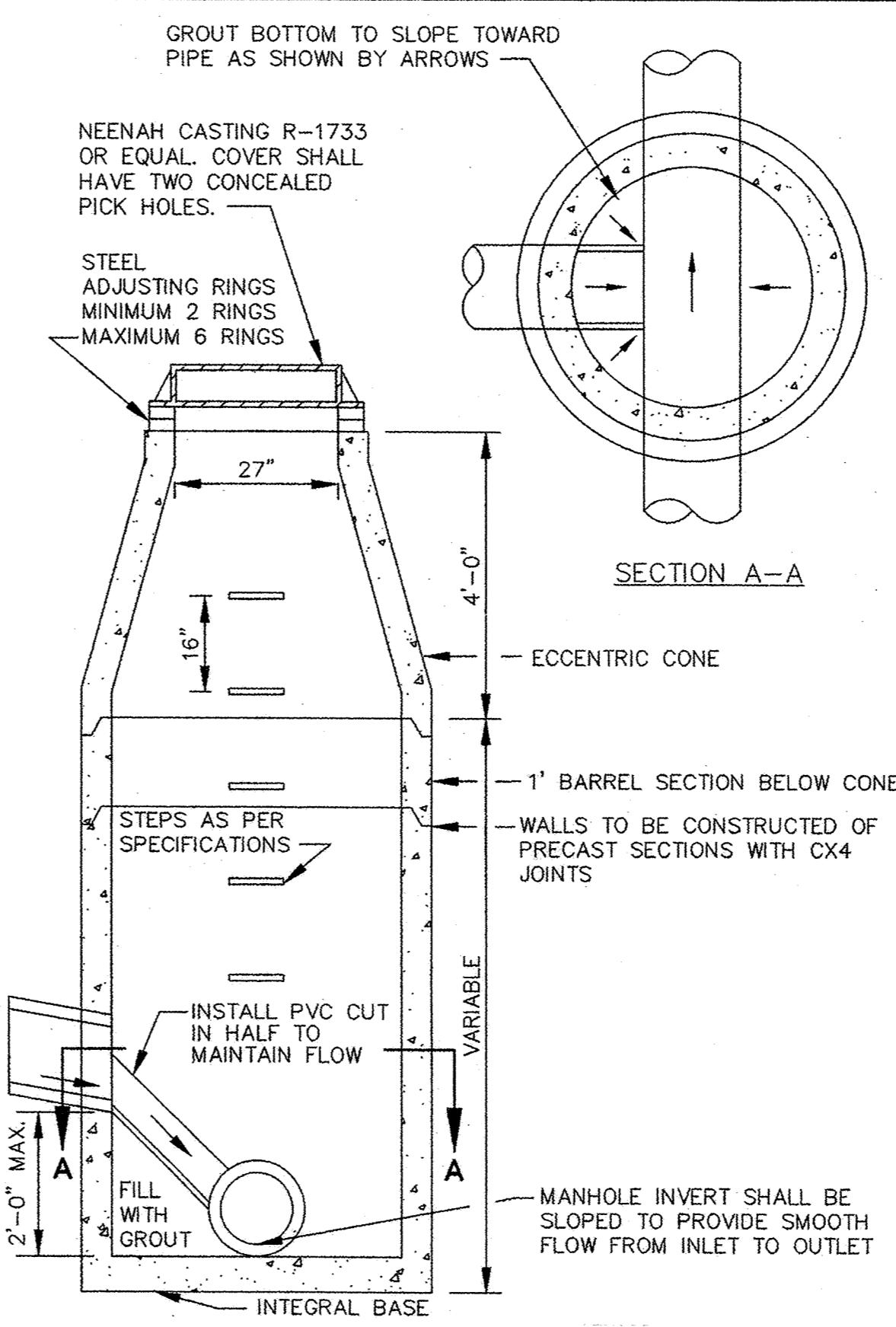


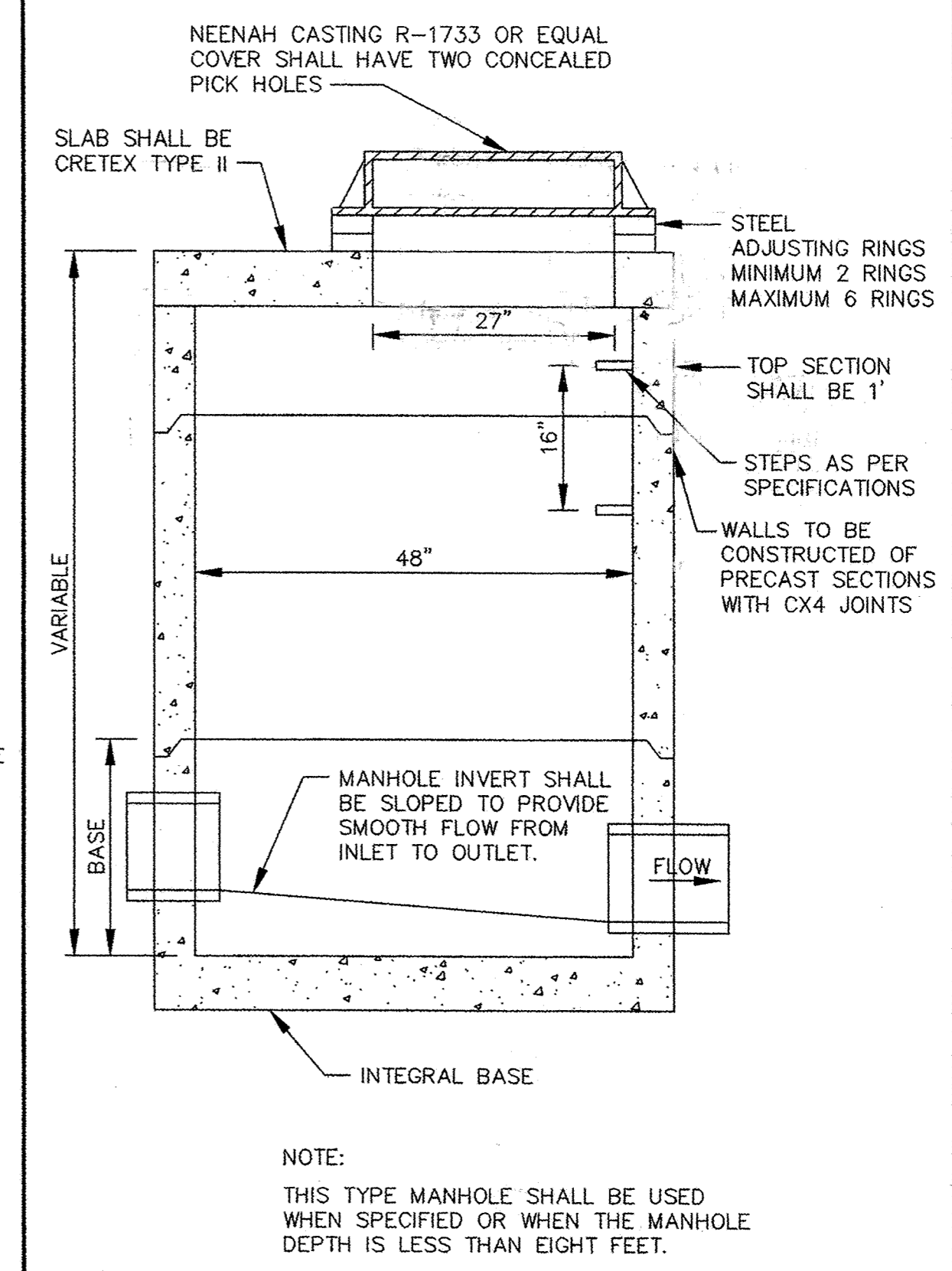
STANDARD AIR RELIEF MANHOLE



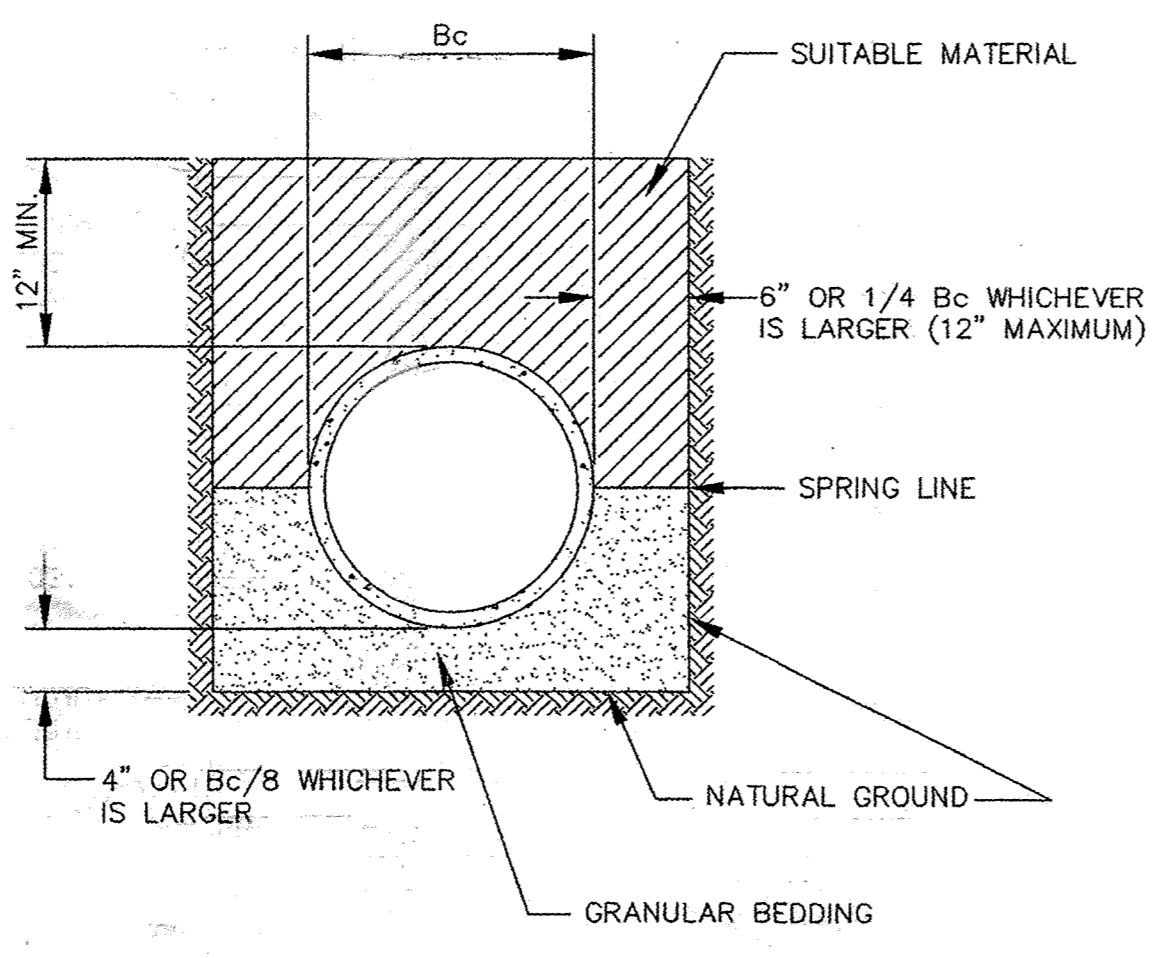
OUTSIDE DROP MANHOLE



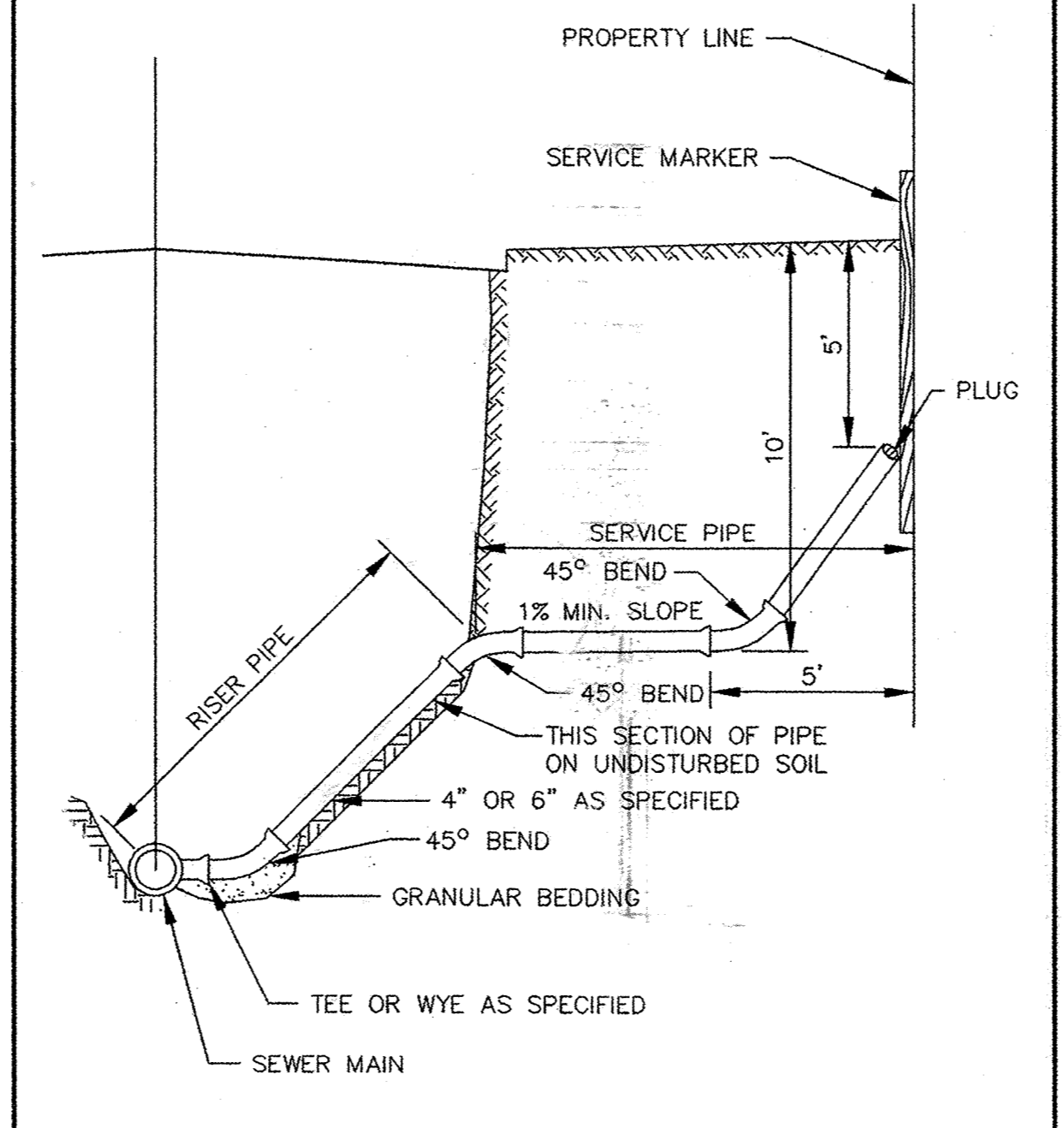
INSIDE DROP MANHOLE (TWO FEET OR LESS)



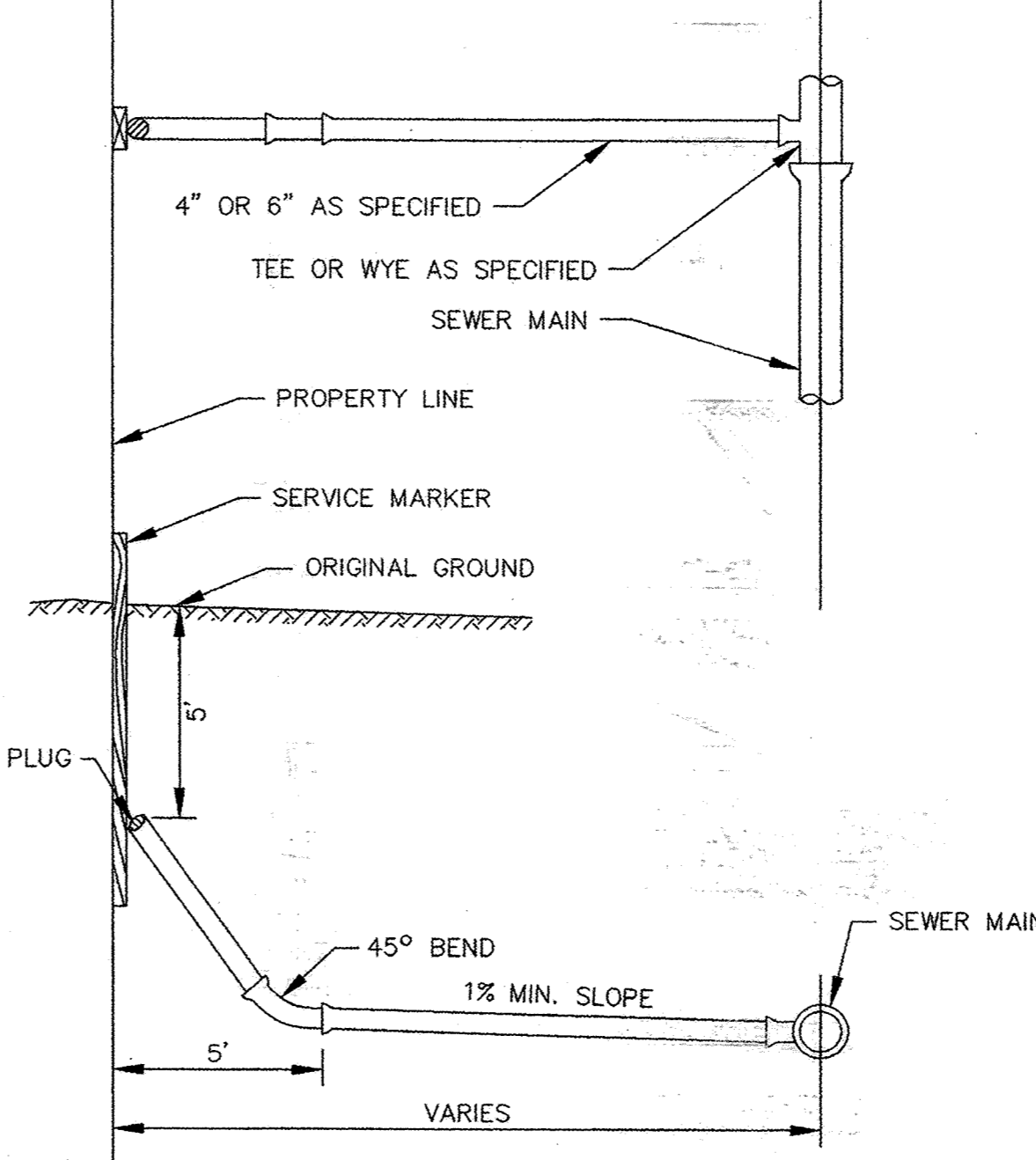
SLAB TOP MANHOLE



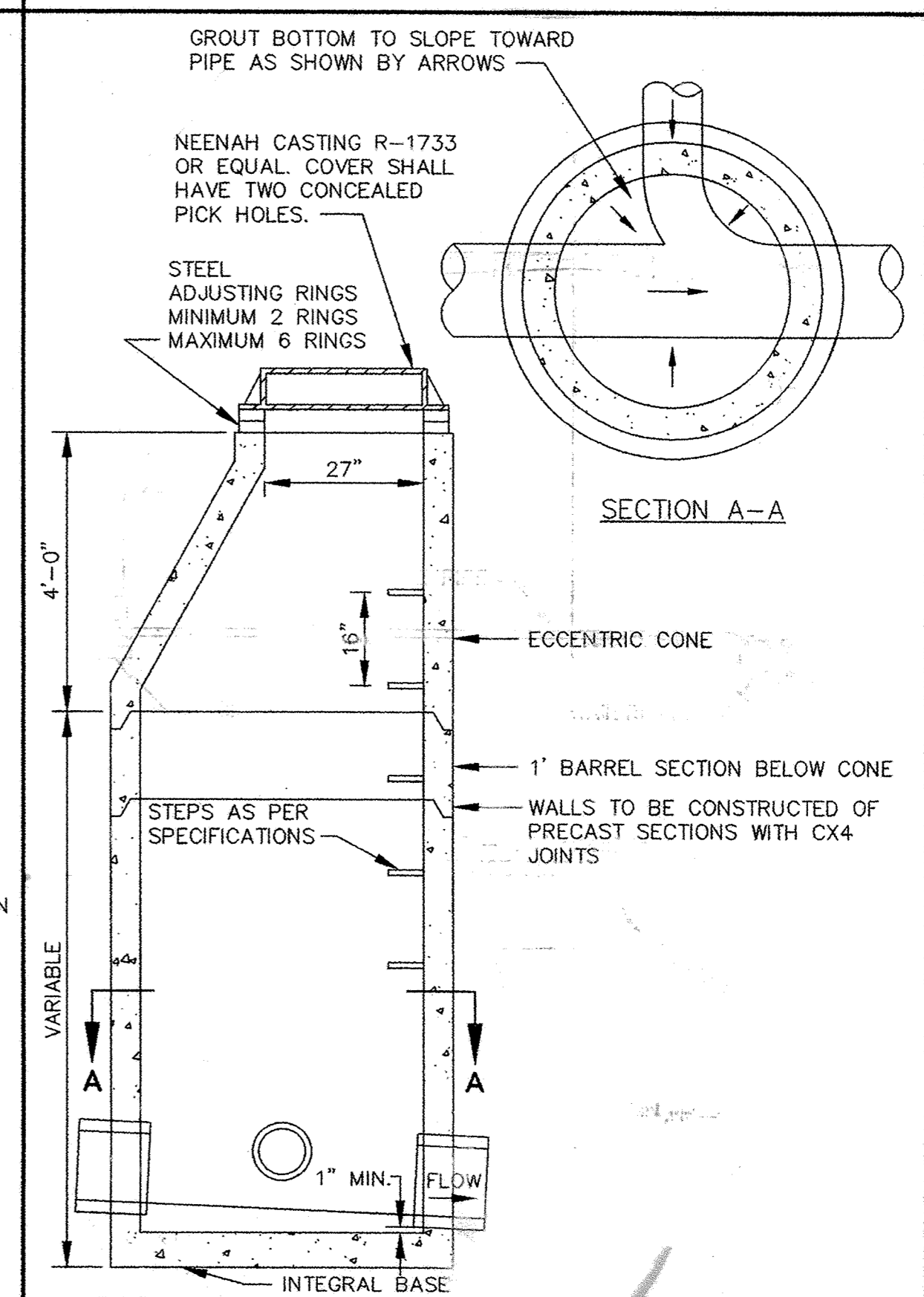
CLASS B PIPE BEDDING



TO BE USED AS SERVICE CONNECTIONS ON DEEP LINES



TYPICAL HOUSE SERVICE



STANDARD MANHOLE

CONTRACTOR: Ryan Contracting Co.  
8700 13th Ave. East  
Shakopee, MN 55379  
# 952-894-3200

RECORD DRAWING  
CONFORMING TO CONSTRUCTION RECORDS  
BY STEVE PELPSEN DATE 12/08/06  
WESTWOOD PROFESSIONAL SERVICES

Westwood Professional Services, Inc.  
7699 Anagram Drive  
Eden Prairie, MN 55344

PHONE 952-937-5150  
FAX 952-937-9822  
TOLL FREE 1-888-957-5150  
www.westwoodps.com

PREPARED FOR:  
**D.R. Horton, Inc.**  
20860 Kenbridge Court, Suite 100  
Lakeville, MN 55044

NO.	DATE	BY	REVISION DESCRIPTION

1326 ENERGY PARK DRIVE  
ST. PAUL, MINNESOTA 55108  
(612) 644-4389

**Howard R. Green Company**  
CONSULTING ENGINEERS

CITY OF ELK RIVER  
TROTTS BROOK FARMS 10TH ADDITION  
SANITARY SEWER DETAILS

SHEET NO.  
**9**  
OF  
**12**

P:\20041126\dwg\Record\20041126DE01.dwg 10/12/2006 10:08:11 AM CST

SACFO PRODUCTS - NEW HOPE, MINNESOTA  
PREPARED BY PART NUMBER 5532  
REVISION NUMBER 02  
SACFO PRODUCTS - NEW HOPE, MINNESOTA  
PREPARED BY PART NUMBER 5532  
REVISION NUMBER 02  
SACFO PRODUCTS - NEW HOPE, MINNESOTA  
PREPARED BY PART NUMBER 5532  
REVISION NUMBER 02  
SACFO PRODUCTS - NEW HOPE, MINNESOTA  
PREPARED BY PART NUMBER 5532  
REVISION NUMBER 02  
9  
TROTTSBK-F10.06