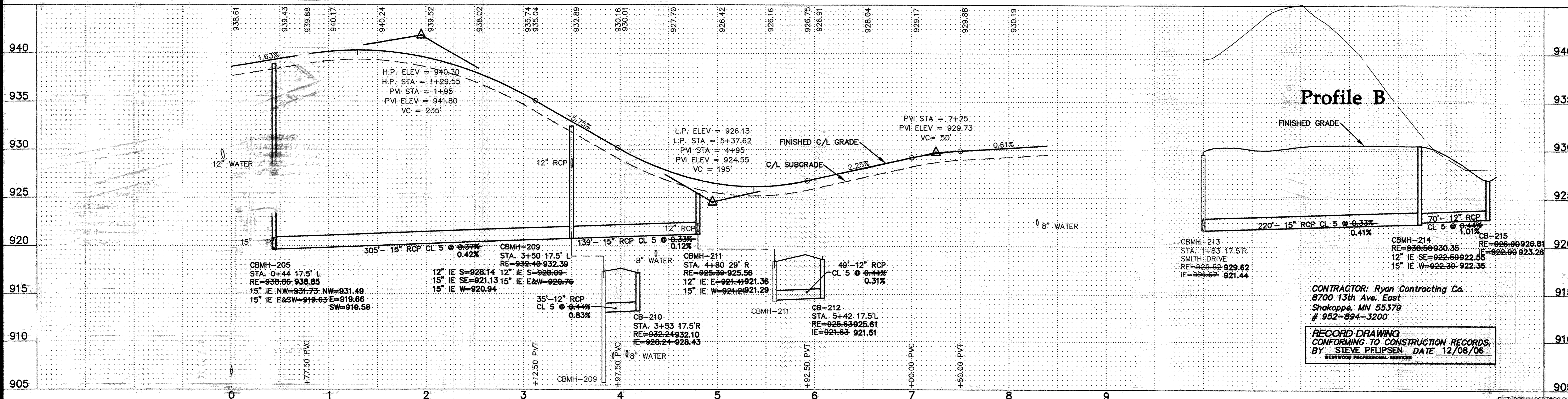
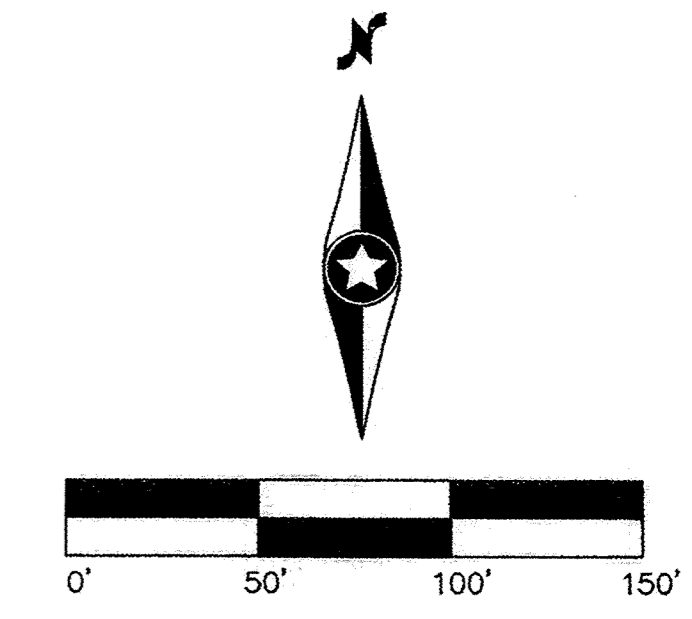


**GENERAL NOTES:**

- RADIUS TO BE 8618 C. & G. WITH 10' TRANSITION FROM SURMOUNTABLE CURB
- DENOTES GUTTERLINE ELEVATION AT INTERSECTIONS
- ALL RCP SHALL BE CLASS 4, UNLESS OTHERWISE NOTED

**CASTING NOTE:**

ALL CATCH BASIN CASTINGS IN CURB SHALL BE SUMPED 0.15 FEET AND MANHOLE CASTINGS IN PAVED AREAS SHALL BE SUMPED 0.05 FEET. RIM ELEVATIONS ON PLAN PROFILES REFLECT THE SUMPED ELEVATIONS.



P:\2004\126.dwg (Record) 10/12/2006 10:01:04 AM CST

**Westwood Professional Services, Inc.**  
 7850 Augsburg Drive  
 Eden Prairie, MN 55344  
 PHONE: 952-937-5122  
 FAX: 952-937-5424  
 TOLL FREE: 1-888-937-5150  
 www.westwoodps.com

I hereby certify that this drawing was prepared by me or under my direct supervision and that I am a duly licensed PROFESSIONAL ENGINEER under the laws of the State of Minnesota.

*Jason M. McCarty*  
 Jason M. McCarty License No. 41955  
 Date: 12/08/06

**Revisions:**

10/18/04	ADD 186TH CIRCLE, 187TH AVENUE
11/04/04	CITY REVIEW (SHS)
11/19/04	SMITH DRIVE DATUM ALIGNMENT (CL)
12/20/04	SMITH DRIVE REVISION (SHS)
10/12/06	RECORD DRAWING (SHS)
12/08/06	RECORD DRAWING-BOM COMMENTS (SWW)

**Design:** JMM  
**Checked:** CLJ  
**Drawn:** SHS  
**Record Drawing by/date:**

Prepared for:

**D.R. Horton, Inc.**  
 20860 Kenbridge Court, Suite 100  
 Lakeville, Minnesota 55044

**Trott Brooks Farm  
 10th Addition**  
 Elk River, Minnesota

**Storm Sewer  
 and Street  
 Record Plans**  
 186th Circle

SACO PRODUCTS • NEW HOPE, MINNESOTA  
 REPRODUCED BY PART NUMBER 8532  
 SACO PRODUCTS • NEW HOPE, MINNESOTA  
 REPRODUCED BY PART NUMBER 8532  
 SACO PRODUCTS • NEW HOPE, MINNESOTA  
 REPRODUCED BY PART NUMBER 8532