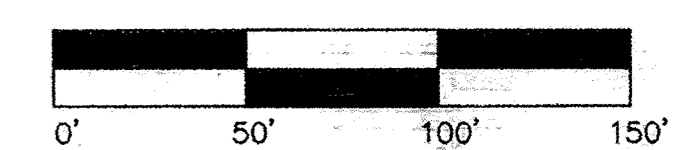
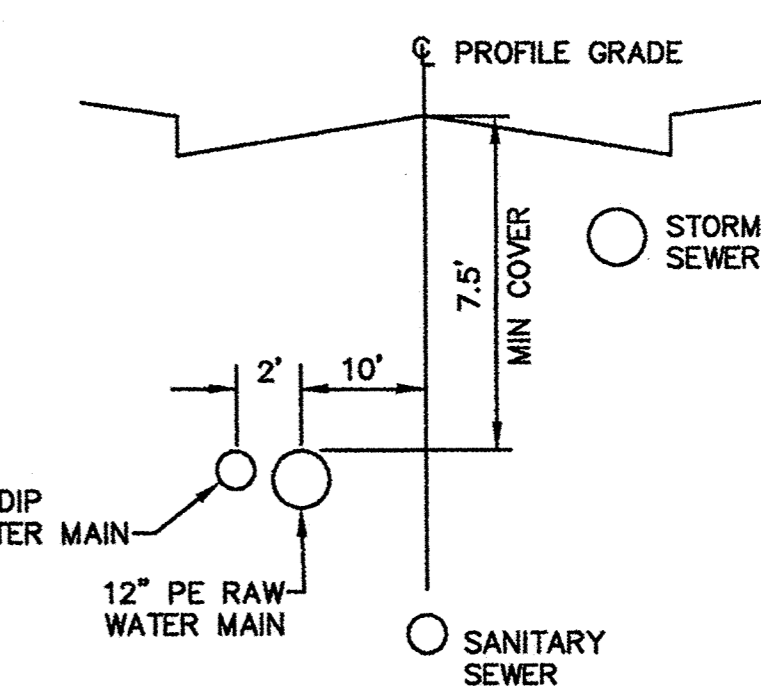


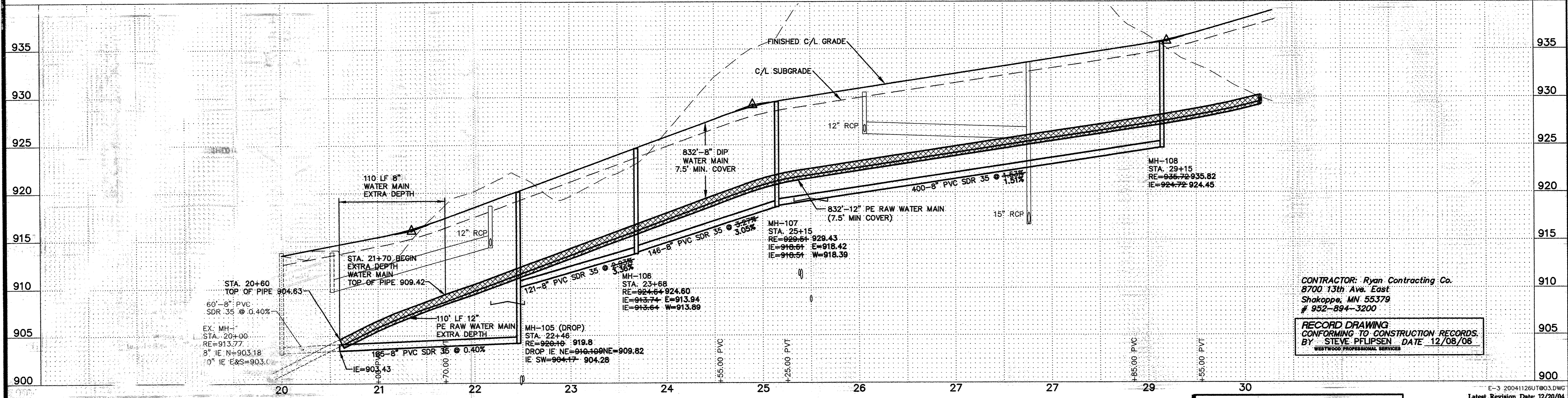
GENERAL NOTES:

- (XXX) DENOTES SANITARY SEWER SERVICE INVERT @ END OF FUTURE SERVICE STUB
- WYE=X+XX DENOTES SANITARY SEWER SERVICE WYE LOCATED ON MAINLINE FROM DOWN STREAM M.H.
- EXTEND RODS ON DEEP VALVES.
- ALL DROP MANHOLES WITH DROPS OVER 2' TO BE CONSTRUCTED USING OUTSIDE DROPS.
- SANITARY SEWER & WATER SERVICES TO BE EXTENDED 10' PAST ROW ON ALL LOTS

PE RAW WATER MAIN DETAIL



187th Avenue



P:\2004\1126\dwg\Record\20041126\187th Avenue.dwg 12/8/2006 1:26:58 PM CST

Westwood Professional Services
7690 Anagram Drive
Lakeville, MN 55344
PHONE 952-937-5150
FAX 952-937-5822
TOLL FREE 1-888-937-5150
www.westwoodps.com

I hereby certify that this plan was prepared by me or under my direct supervision and that I am a duly licensed PROFESSIONAL ENGINEER under the laws of the State of Minnesota.
Steve Pflipsen
Steve Pflipsen
12/08/06 License No. 41955

Revisions:

10/18/04	ADD 186TH CIRCLE, 187TH AVENUE
11/20/04	CITY REVIEW (SHS)
11/18/04	SMITH DRIVE DATUM ALIGNMENT (CLJ)
12/20/04	SMITH DRIVE REVISION (SHS)
10/12/06	RECORD DRAWING (SHS)
12/08/06	RECORD DRAWING-BDM COMMENTS (SHW)

Prepared for:

Design:	JMM
Check:	CLJ
Draw:	HW
Record Drawing by/Date:	

D.R. Horton, Inc.
20860 Kenbridge Court, Suite 100
Lakeville, MN 55044

Trott Brook Farms
10th Addition
Elk River, Minnesota

Sanitary Sewer and Water Main Record Plans
187th Avenue

Date: 10/18/04 Sheet: 5 OF 12
Latest Revision Date: 12/20/04