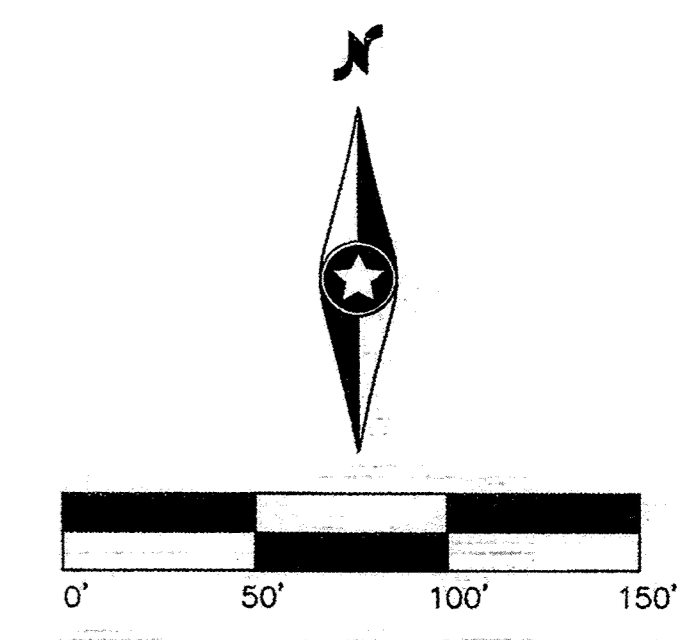
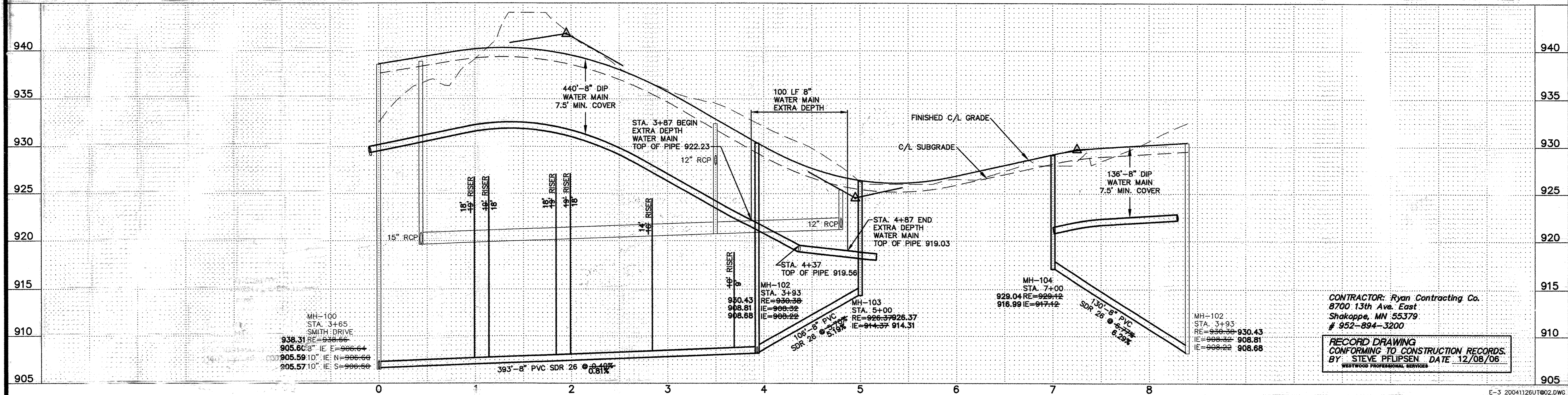


- GENERAL NOTES:**
- XXX.X DENOTES SANITARY SEWER SERVICE INVERT @ END OF FUTURE SERVICE STUB
 - WYE=X+XX DENOTES SANITARY SEWER SERVICE WYE LOCATED ON MAINLINE FROM DOWN STREAM M.H.
 - EXTEND RODS ON DEEP VALVES.
 - ALL DROP MANHOLES WITH DROPS OVER 2' TO BE CONSTRUCTED USING OUTSIDE DROPS.
 - SANITARY SEWER & WATER SERVICES TO BE EXTENDED 10' PAST ROW ON ALL LOTS
 - * INSTALL WATER SERVICES OVER STORM SEWER



186th Circle



CONTRACTOR: Ryan Contracting Co.
 8700 13th Ave. East
 Shakopee, MN 55379
 # 952-894-3200

RECORD DRAWING
 CONFORMING TO CONSTRUCTION RECORDS.
 BY: STEVE PFLIPSEN DATE: 12/08/06
 WESTWOOD PROFESSIONAL SERVICES

P:\2004\1126.dwg Record\2004\1126\T02.dwg 12/8/2006 12:51:16 PM CST

Westwood
 Westwood Professional Services, Inc.
 7995 Grand Drive
 Eden Prairie, MN 55344

PHONE: 952-937-5150
 FAX: 952-937-9822
 TOLL FREE: 1-888-937-5150
 www.westwoodps.com

I certify that this plan was prepared by me or under my supervision and that I am a duly licensed PROFESSIONAL ENGINEER under the laws of the State of Minnesota.

John M. McCarty
 John M. McCarty
 12/08/06 License No. 41955

Revisions:

0/18/04	ADD 186TH CIRCLE, 187TH AVENUE
12/24/04	CITY REVIEW (SHS)
1/17/04	SANITARY REVISION (SHS)
1/18/04	SMITH DRIVE DATUM ALIGNMENT (CLJ)
12/20/04	SMITH DRIVE REVISION (SHS)
0/12/06	RECORD DRAWING (SHS)
2/08/06	RECORD DRAWING-BOM COMMENTS (SWW)

Designed: JMM
 Checked: CLJ
 Drawn: HW
 Record Drawing by/date:

Prepared for:

D.R. Horton, Inc.
 20860 Kenbridge Court, Suite 100
 Lakeville, MN 55044

Trott Brook Farms
 10th Addition
 Elk River, Minnesota

Sanitary Sewer and Water Main Record Plans
 186th Circle