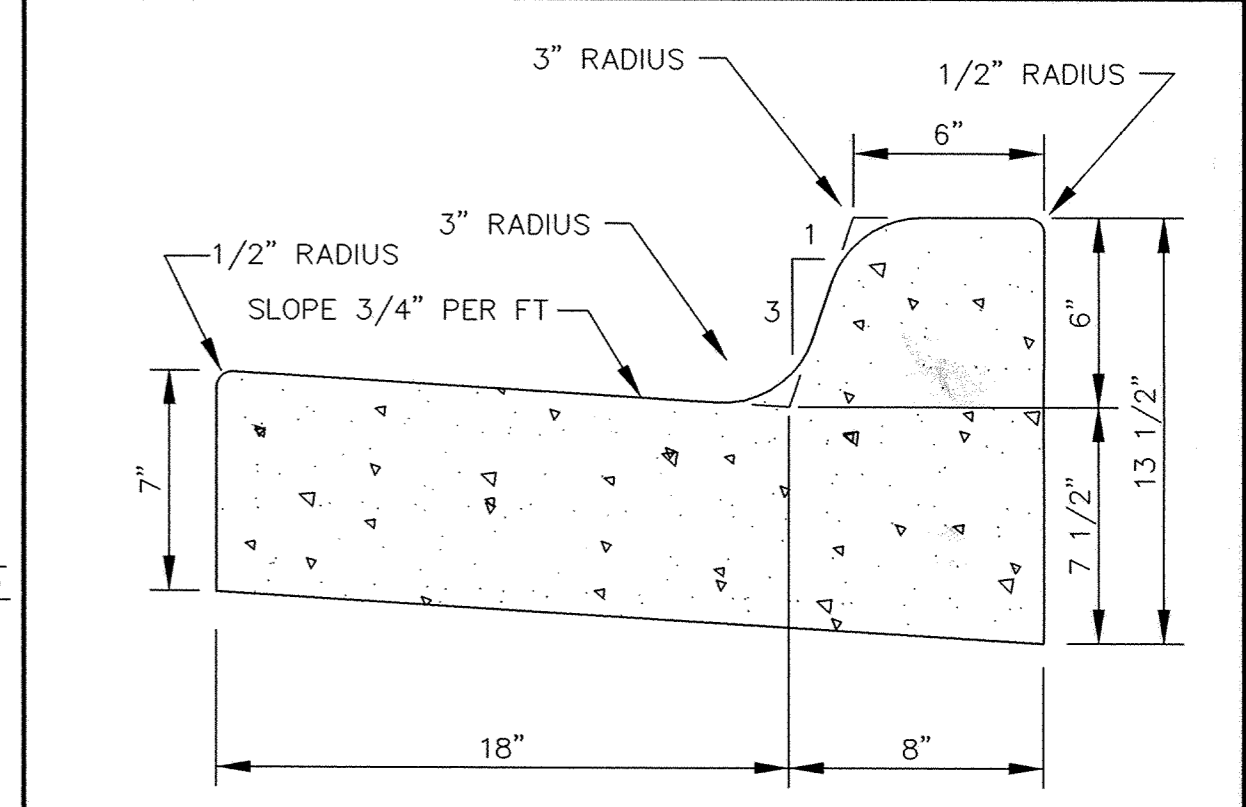
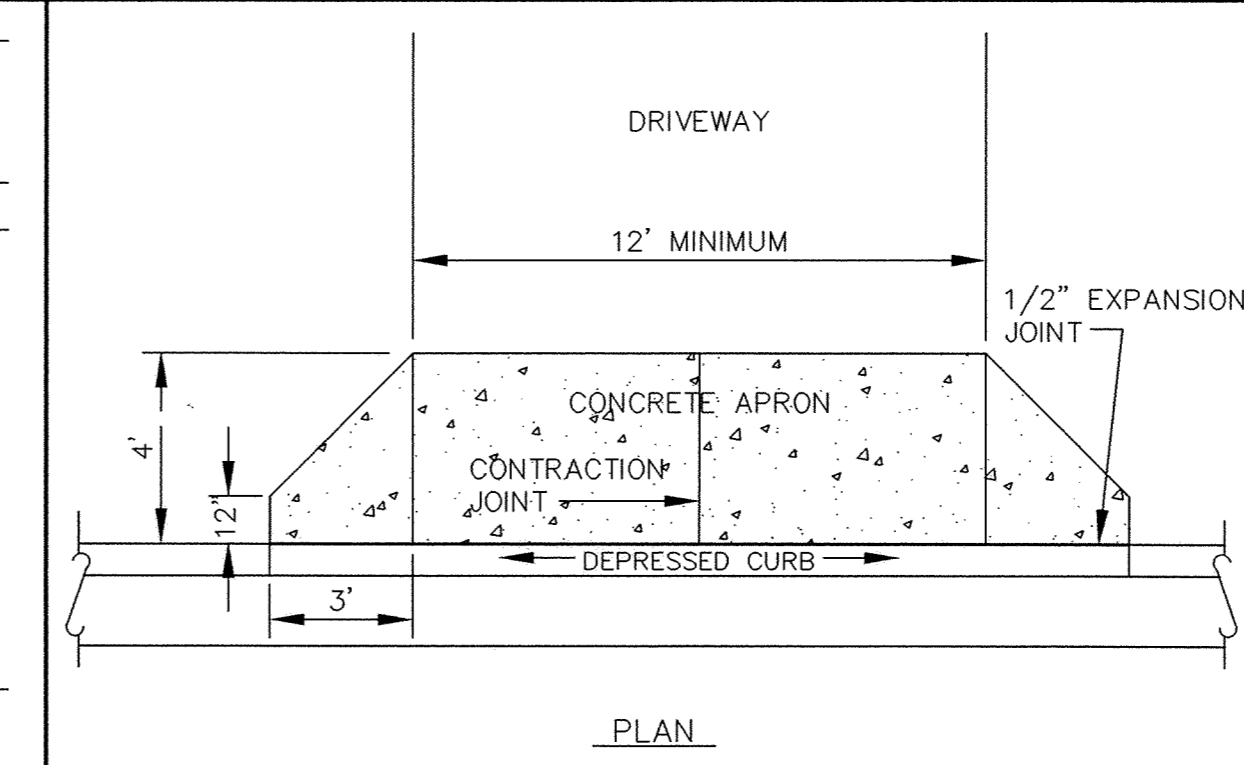


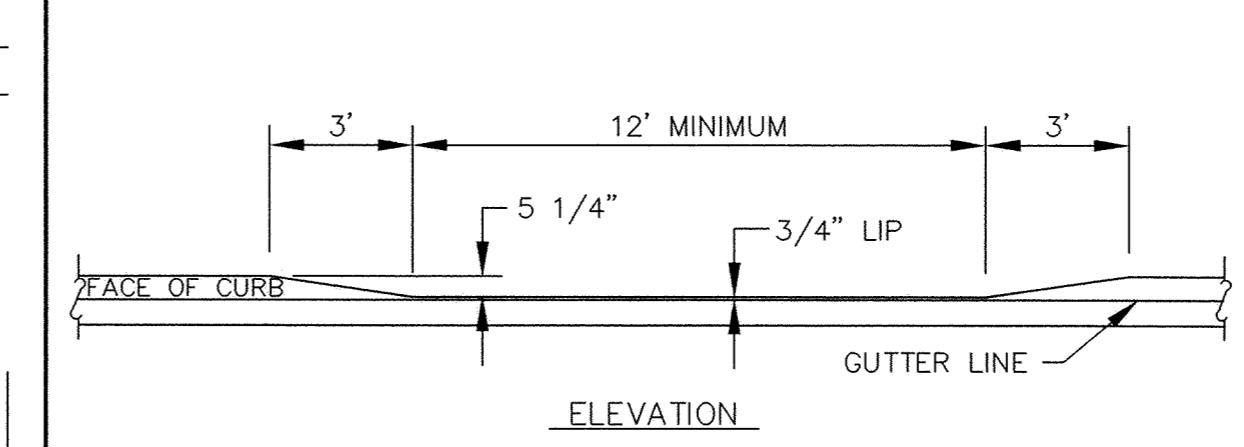
SURMOUNTABLE CONCRETE CURB AND GUTTER



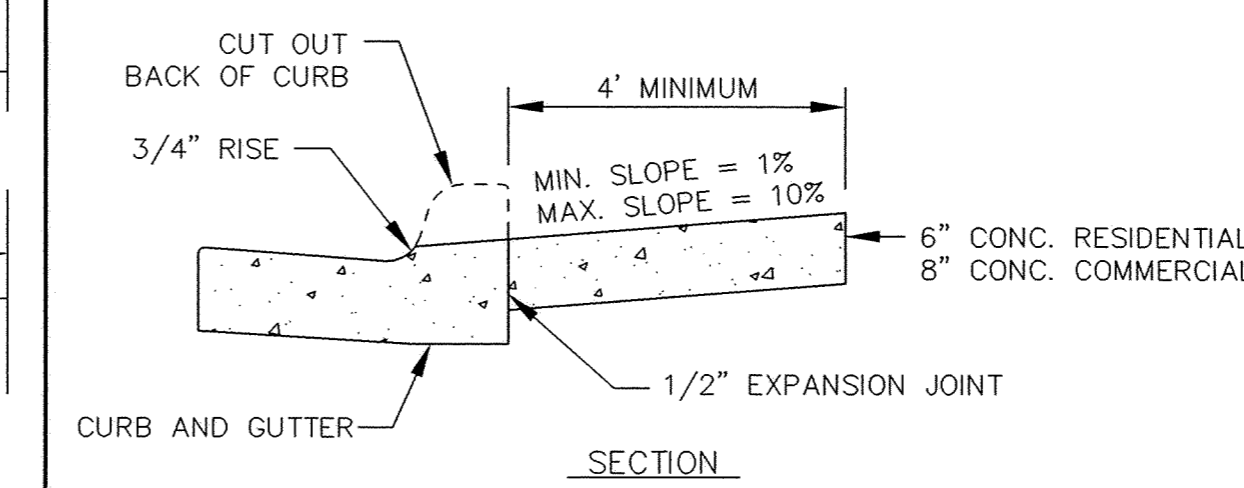
CONCRETE CURB AND GUTTER B618



PLAN

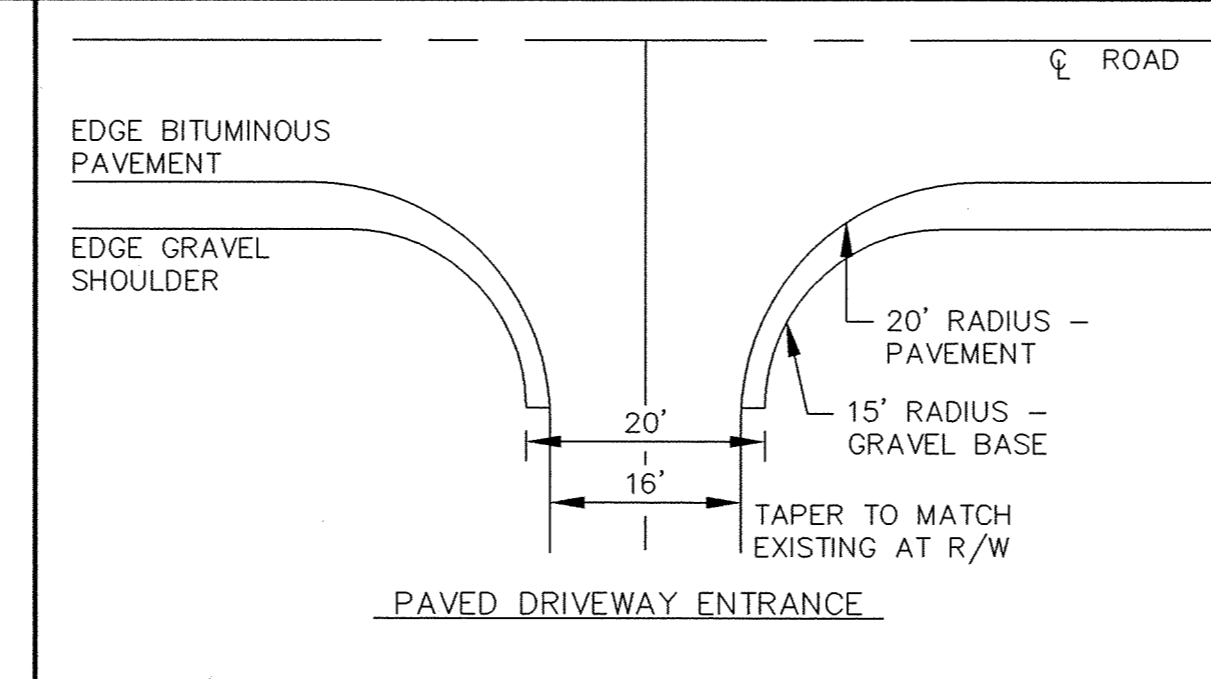


ELEVATION

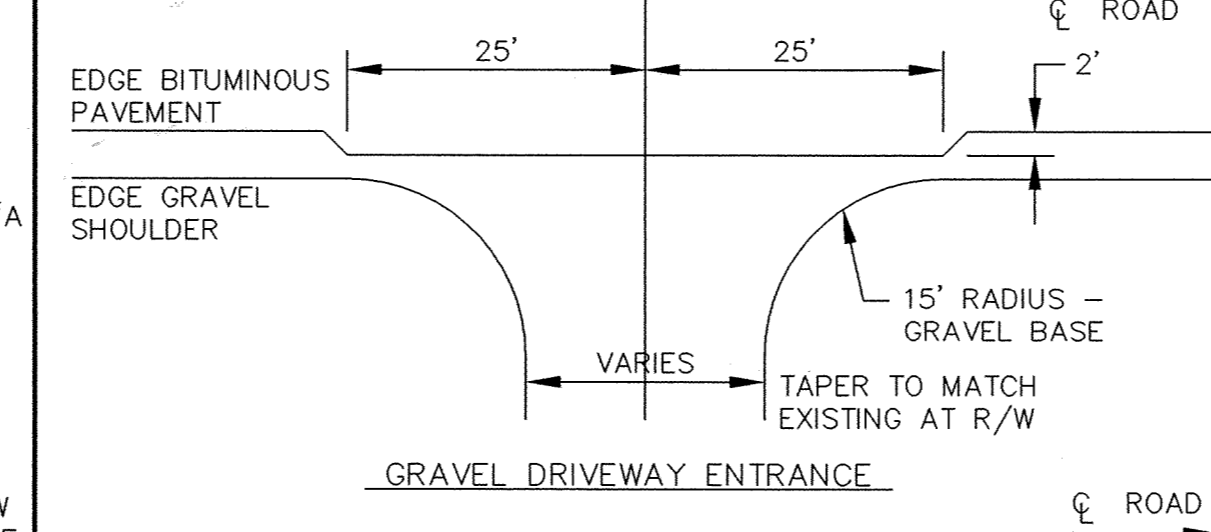


SECTION

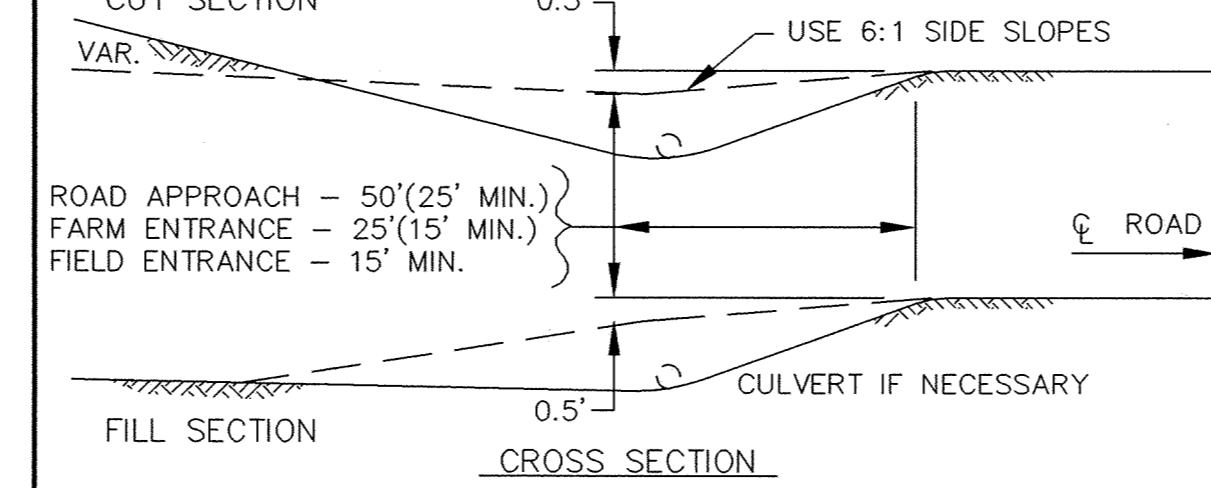
DEPRESSED CURB WITH DRIVEWAY APRON



PAVED DRIVEWAY ENTRANCE

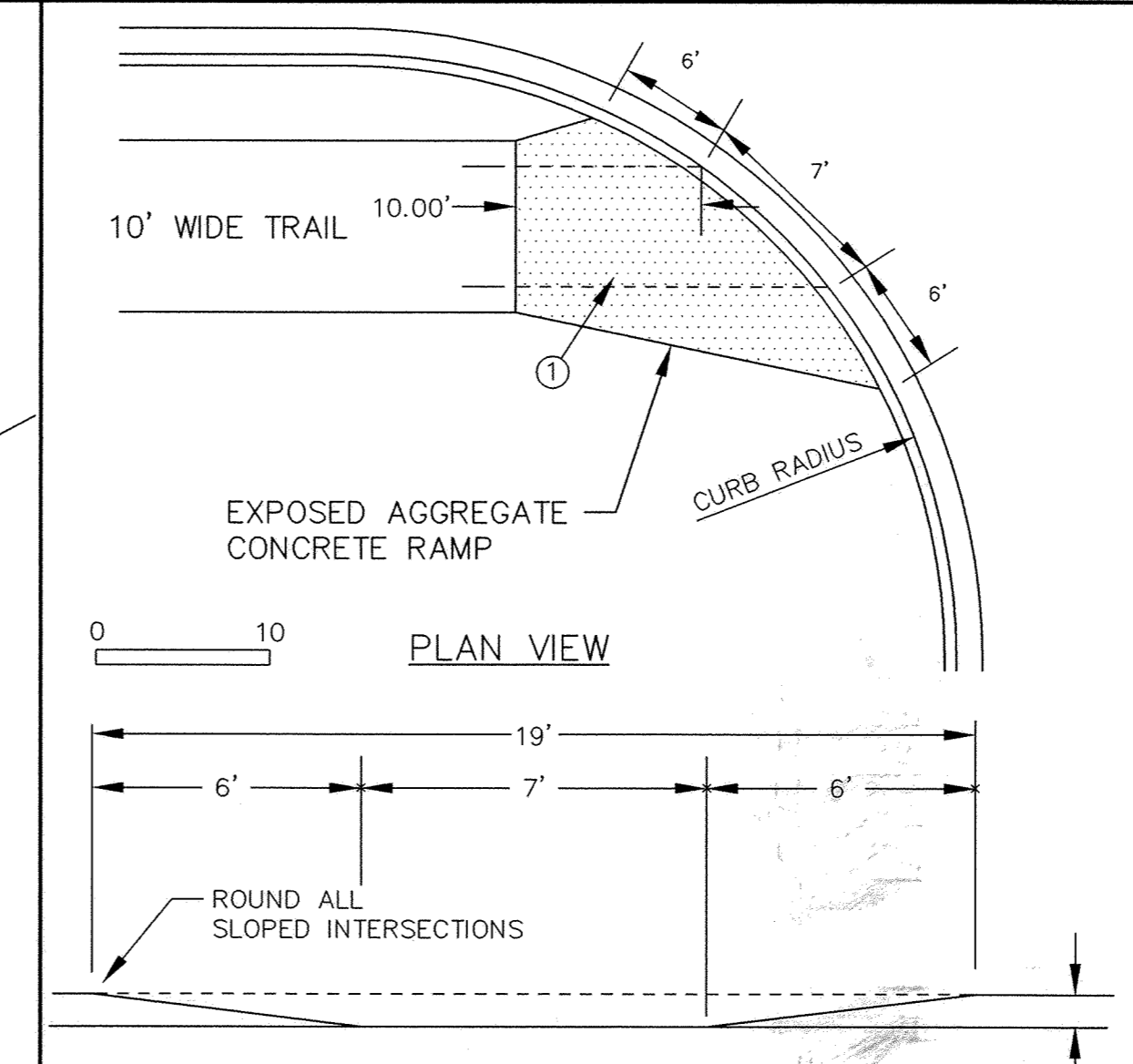


GRAVEL DRIVEWAY ENTRANCE

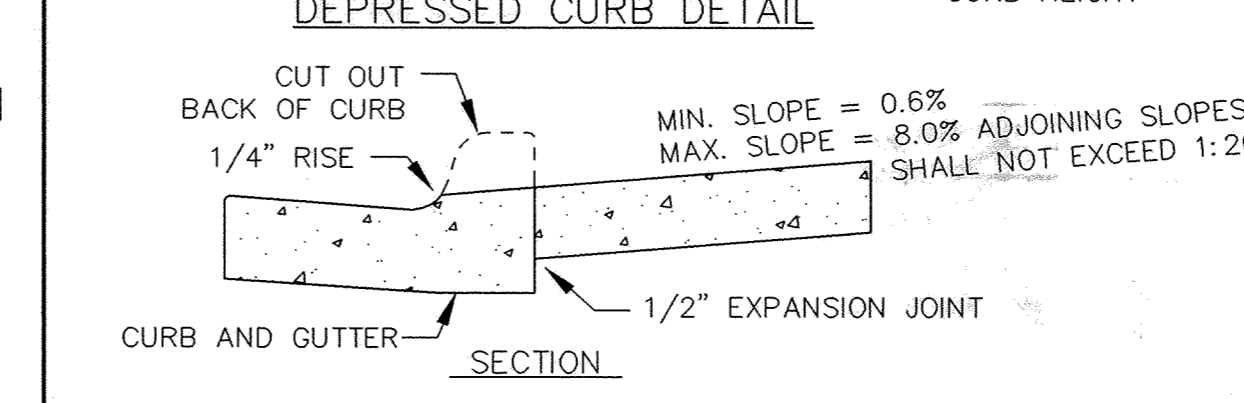


CROSS SECTION

RURAL DRIVEWAY ENTRANCE



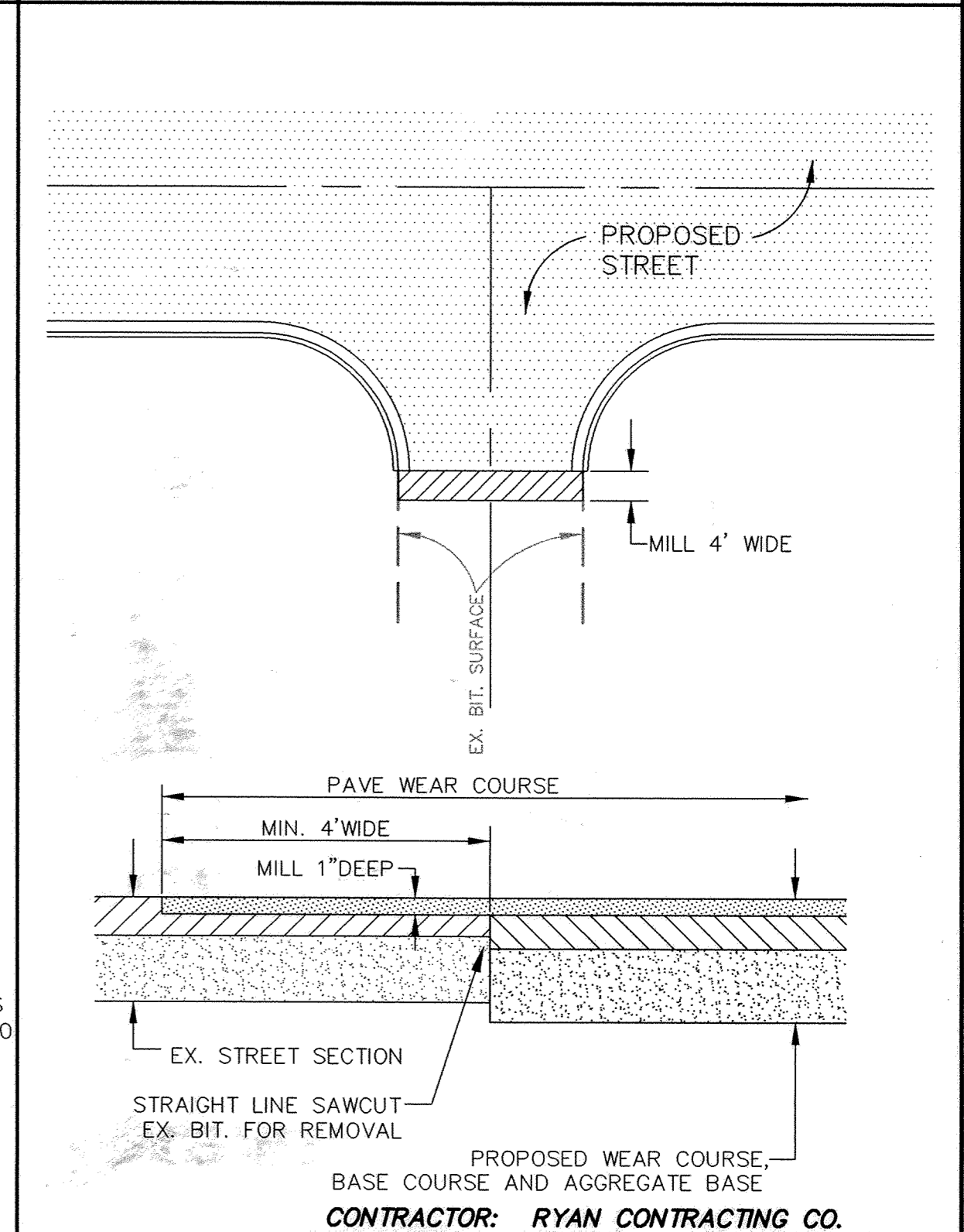
PLAN VIEW



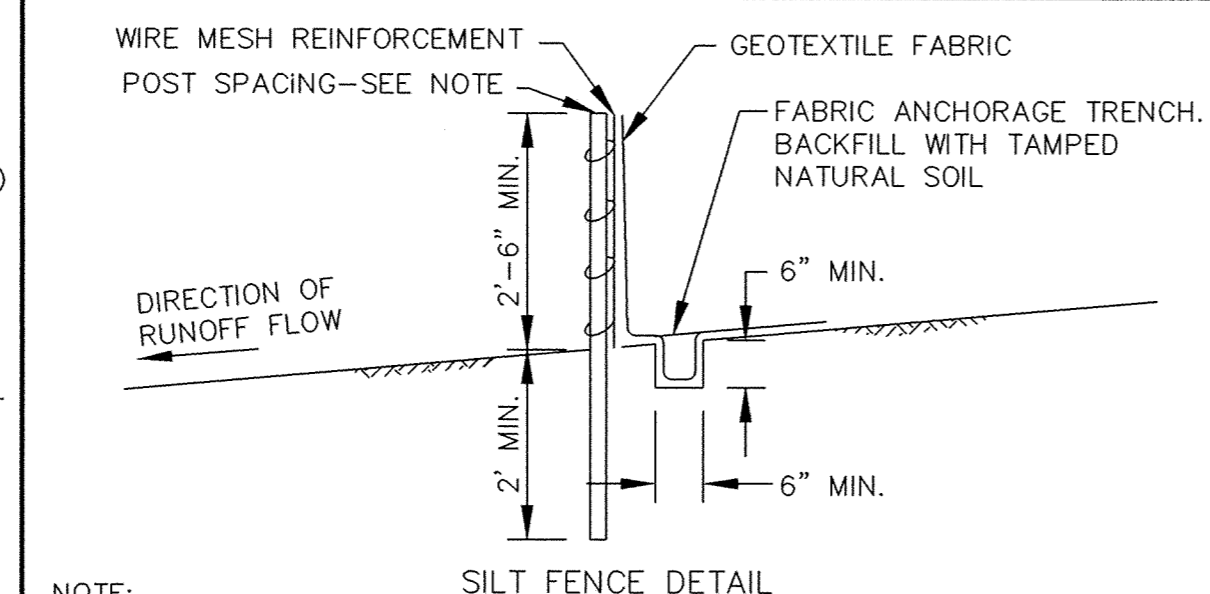
SECTION

DEPRESSED CURB DETAIL

PEDESTRIAN CURB RAMPS FOR TRAILS

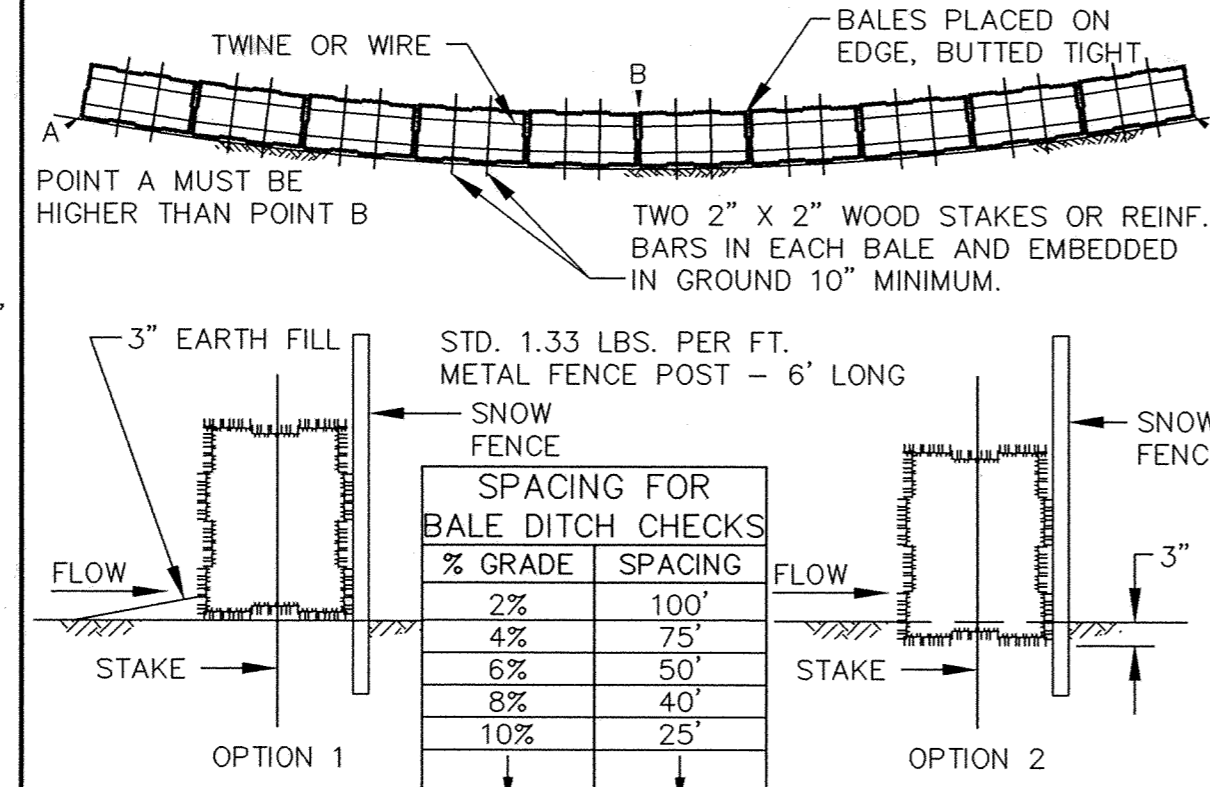


MATCH EXISTING BITUMINOUS SURFACING



SILT FENCE DETAIL

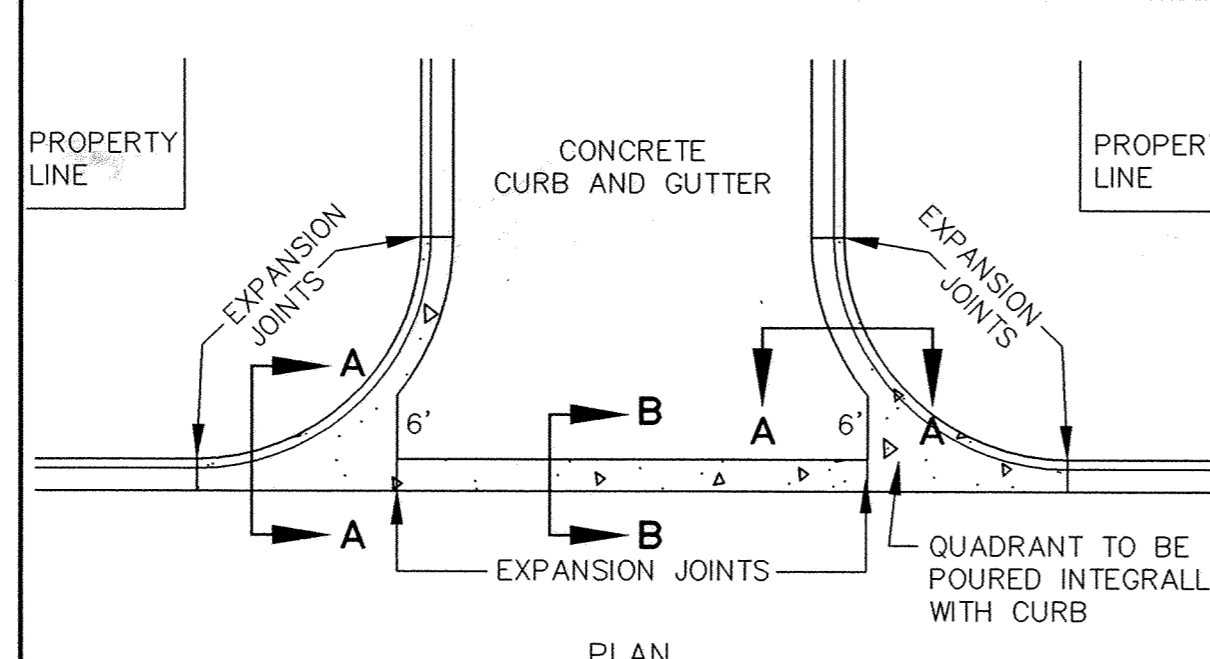
NOTE:
 1. SILT FENCES CONSTRUCTED WITH SUPPORT FENCES, POSTS SHALL BE SPACED AT 10' OR LESS, AND DRIVEN AT LEAST 2' INTO THE GROUND.
 2. SILT FENCES CONSTRUCTED WITHOUT SUPPORT FENCES, POST SHALL BE SPACED AT 4' OR LESS, AND DRIVEN AT LEAST 3' INTO THE GROUND.



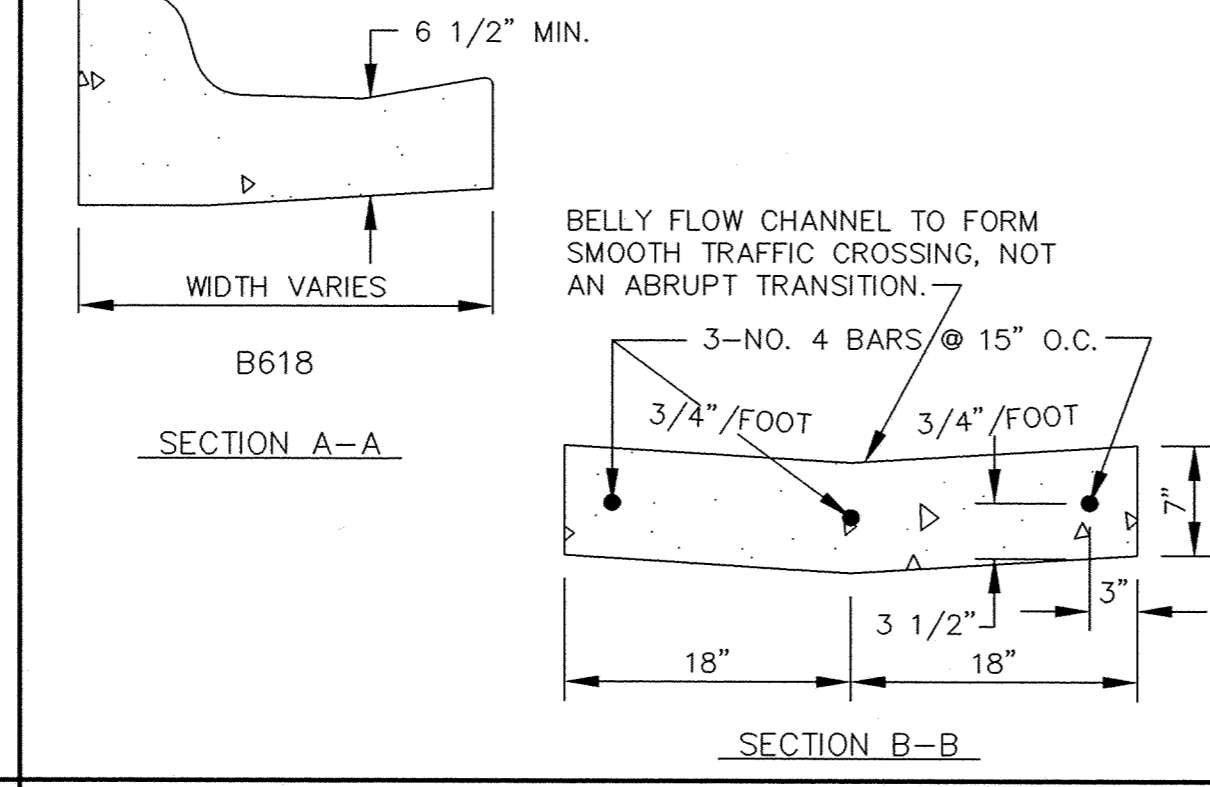
BALE HAY OR STRAW DITCH CHECK

TO BE USED WITH SNOW FENCE AT LOCATIONS AS SHOWN ON PLAN SHEETS. ALSO TO BE USED WITH OR WITHOUT SNOW FENCE AT OTHER LOCATIONS AS DIRECTED BY THE ENGINEER.

EROSION CONTROL DETAIL

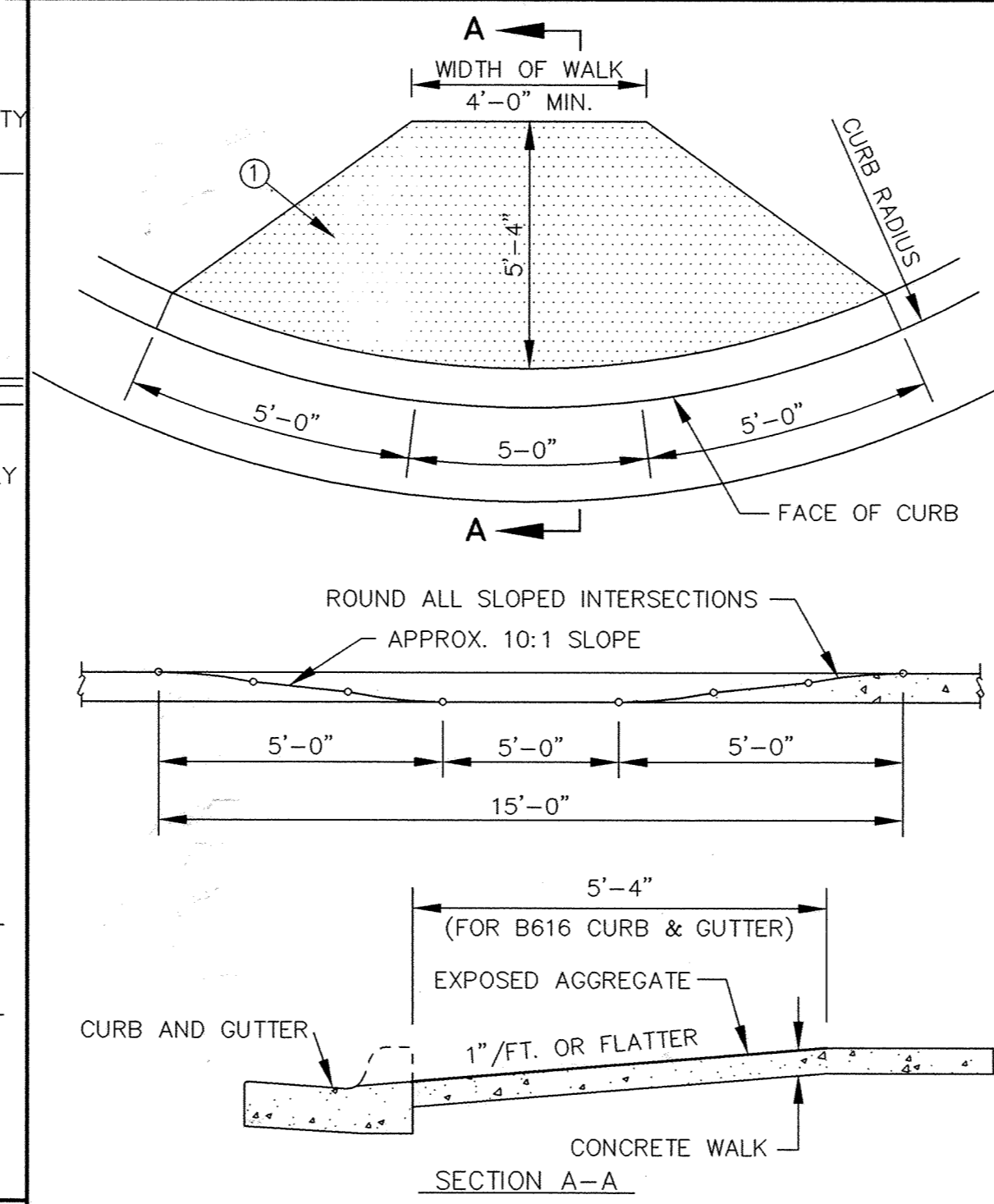


PLAN

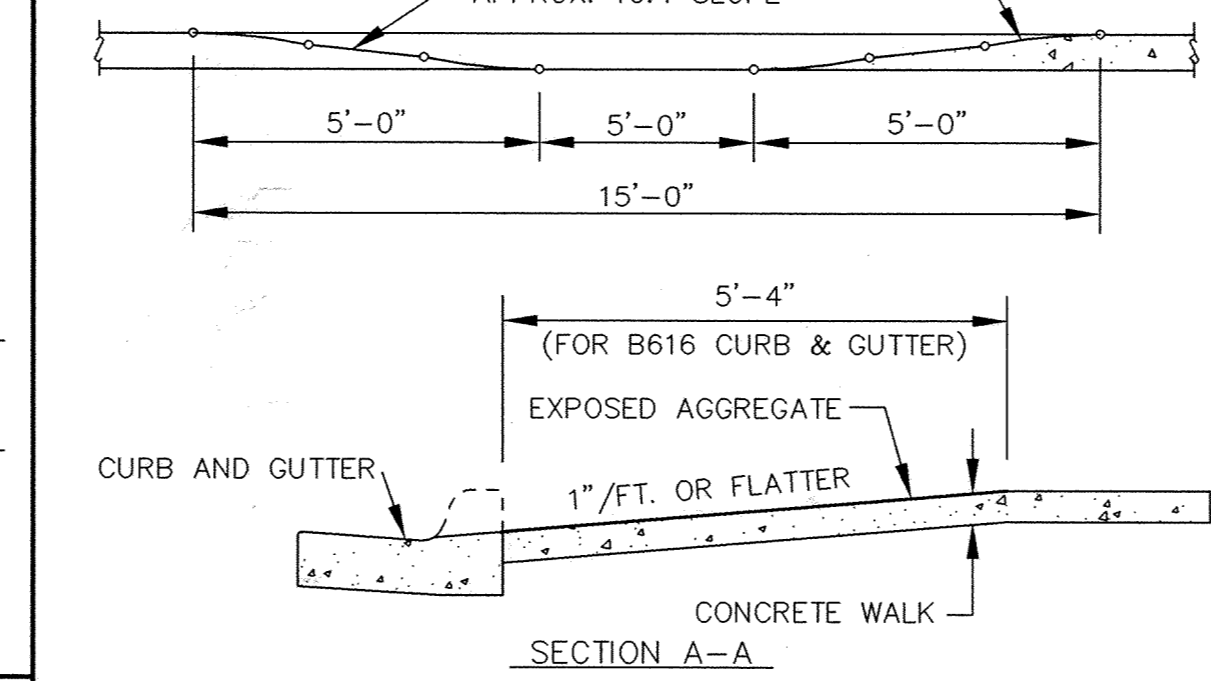


SECTION A-A

CONCRETE "V" GUTTER

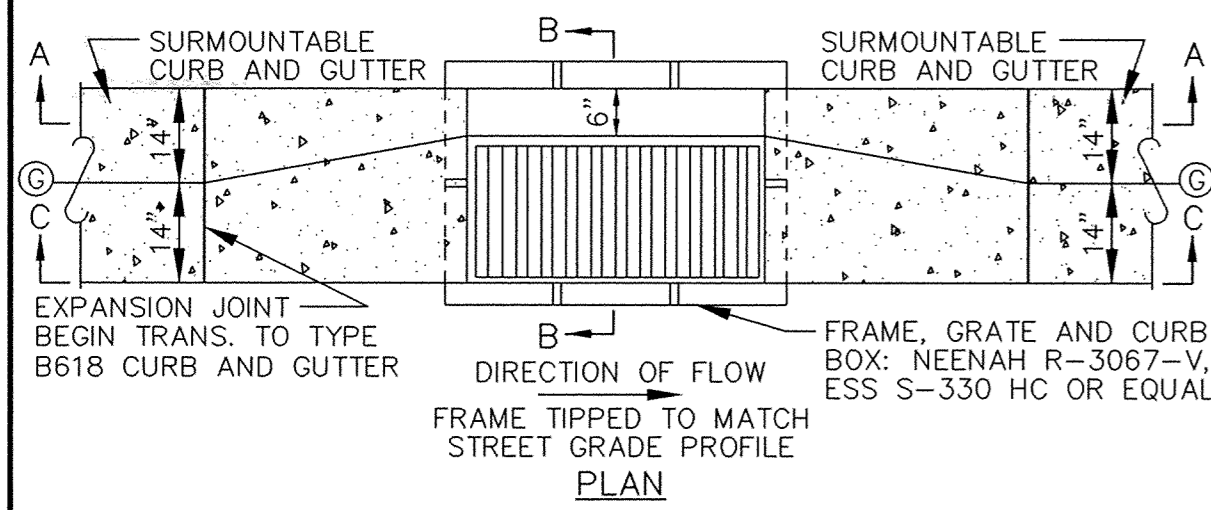


PLAN

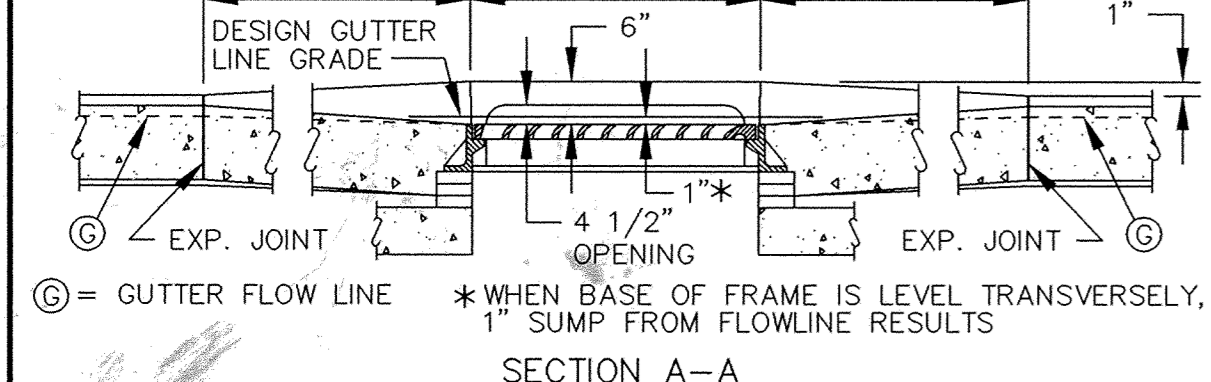


SECTION A-A

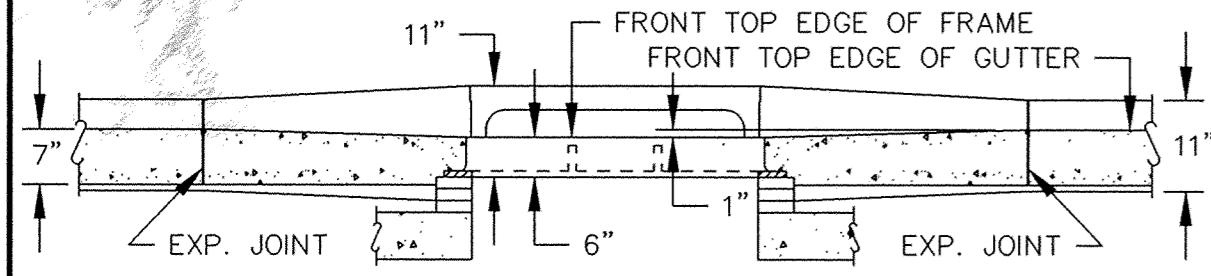
PEDESTRIAN CURB RAMPS FOR SIDEWALKS



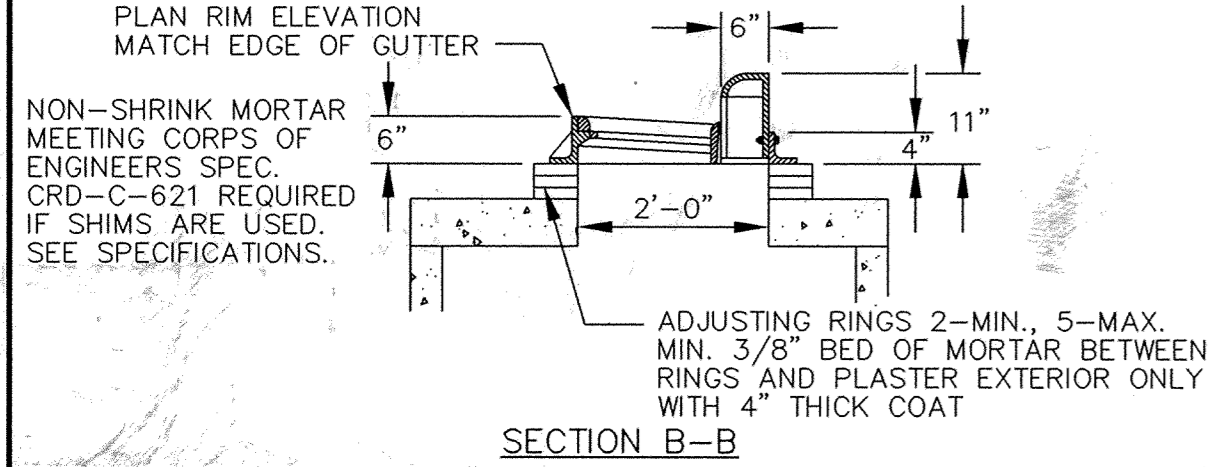
PLAN



SECTION A-A

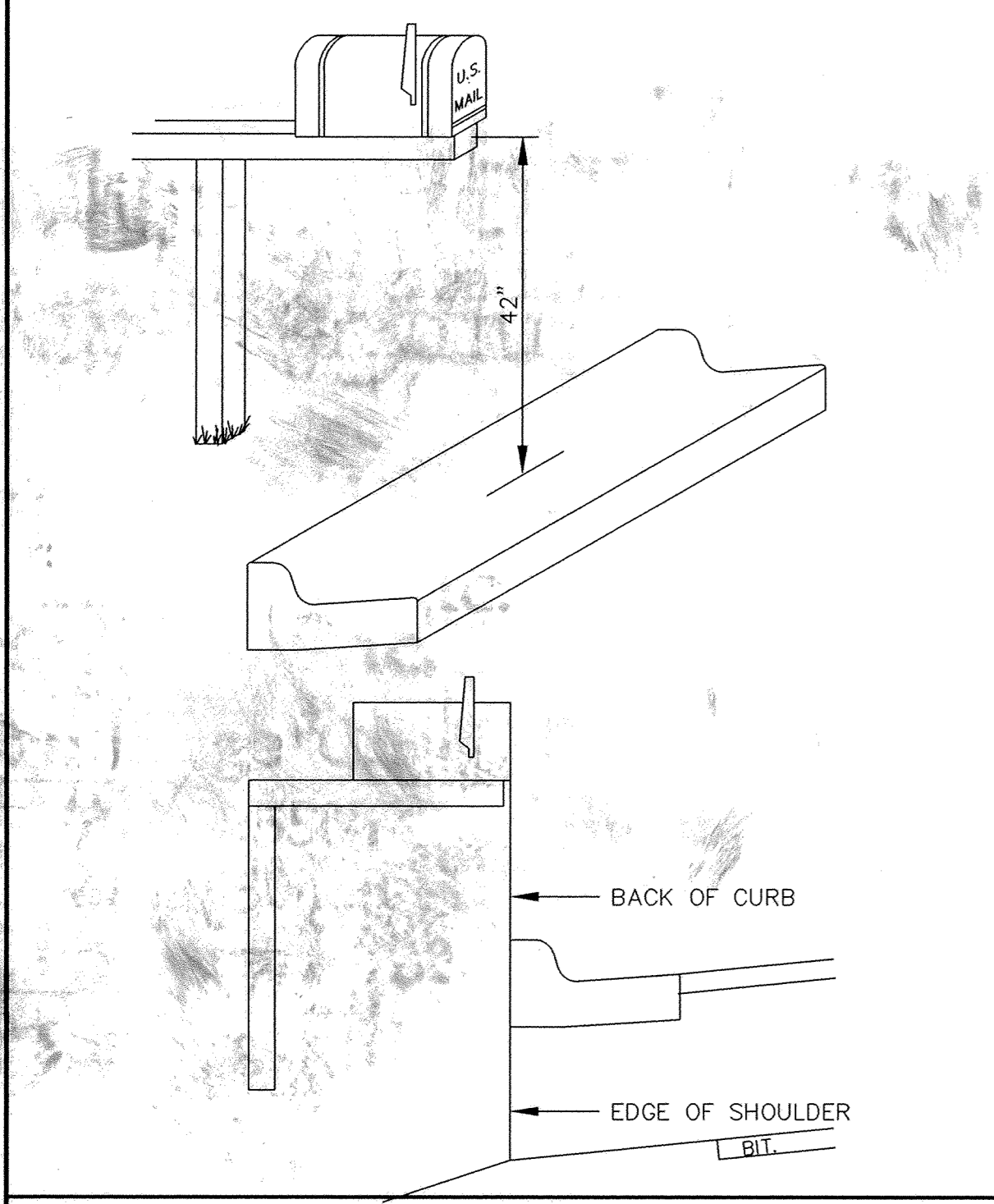


SECTION C-C



SECTION B-B

CATCH BASIN FRAME PLACEMENT SURMOUNTABLE CURB AND GUTTER



MAIL BOX

Westwood Professional Services, Inc.
 7599 Anagram Drive
 Eden Prairie, MN 55344
 Phone: 952/937-5150 Fax: 952/937-5822

PREPARED FOR:
D. R. Horton, Inc.
 20860 Kenbridge Court
 Lakeville, Minnesota 55044

DESIGNED BY: ---	DRAWN BY: ---
APPROVED: ---	JOB NUMBER ---
CAD DATE: April 14, 1999 11:17:32 a.m.	
CAD FILE: 230000m\ER-ST.DWG	

I HEREBY CERTIFY THAT THIS PLAN, SPECIFICATION, OR REPORT WAS PREPARED BY ME OR UNDER MY DIRECT SUPERVISION AND THAT I AM A DULY REGISTERED PROFESSIONAL ENGINEER UNDER THE LAWS OF THE STATE OF MINNESOTA.

DATE _____ REG. NO. _____

NO.	DATE	BY	REVISION DESCRIPTION
1	12/20/05	GKB	RECORD DRAWING

1326 ENERGY PARK DRIVE
 ST. PAUL, MINNESOTA 55108
 (612) 644-4389

Howard R. Green Company
 CONSULTING ENGINEERS

CITY OF ELK RIVER
TROTT BROOK FARMS 9TH ADDITION
STREET CONSTRUCTION DETAILS

SHEET NO.
12
 OF
12

P:\20031125\dwg\RECORD\20031125\ER-ST.dwg 4/15/2006 10:30:00 AM CST

SAICO PRODUCTS - NEW HOPE, MINNESOTA
 REORDER BY PART NUMBER 8552
 SAICO PRODUCTS - NEW HOPE, MINNESOTA
 REORDER BY PART NUMBER 8552
 SAICO PRODUCTS - NEW HOPE, MINNESOTA
 REORDER BY PART NUMBER 8552
 SAICO PRODUCTS - NEW HOPE, MINNESOTA
 REORDER BY PART NUMBER 8552