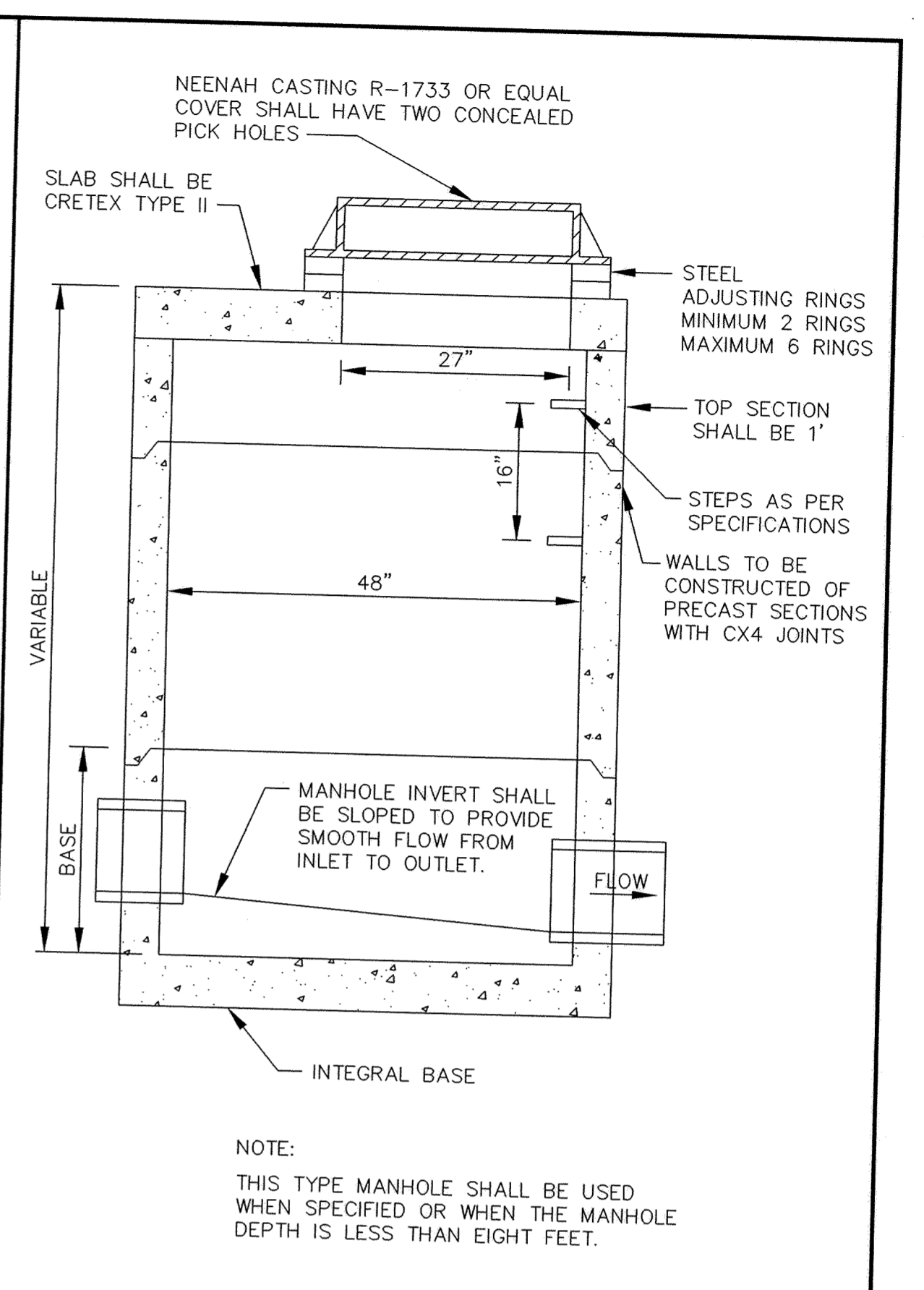


SIFCO PRODUCTS • NEW HOPE, MINNESOTA  
REORDER BY PART NUMBER 8582

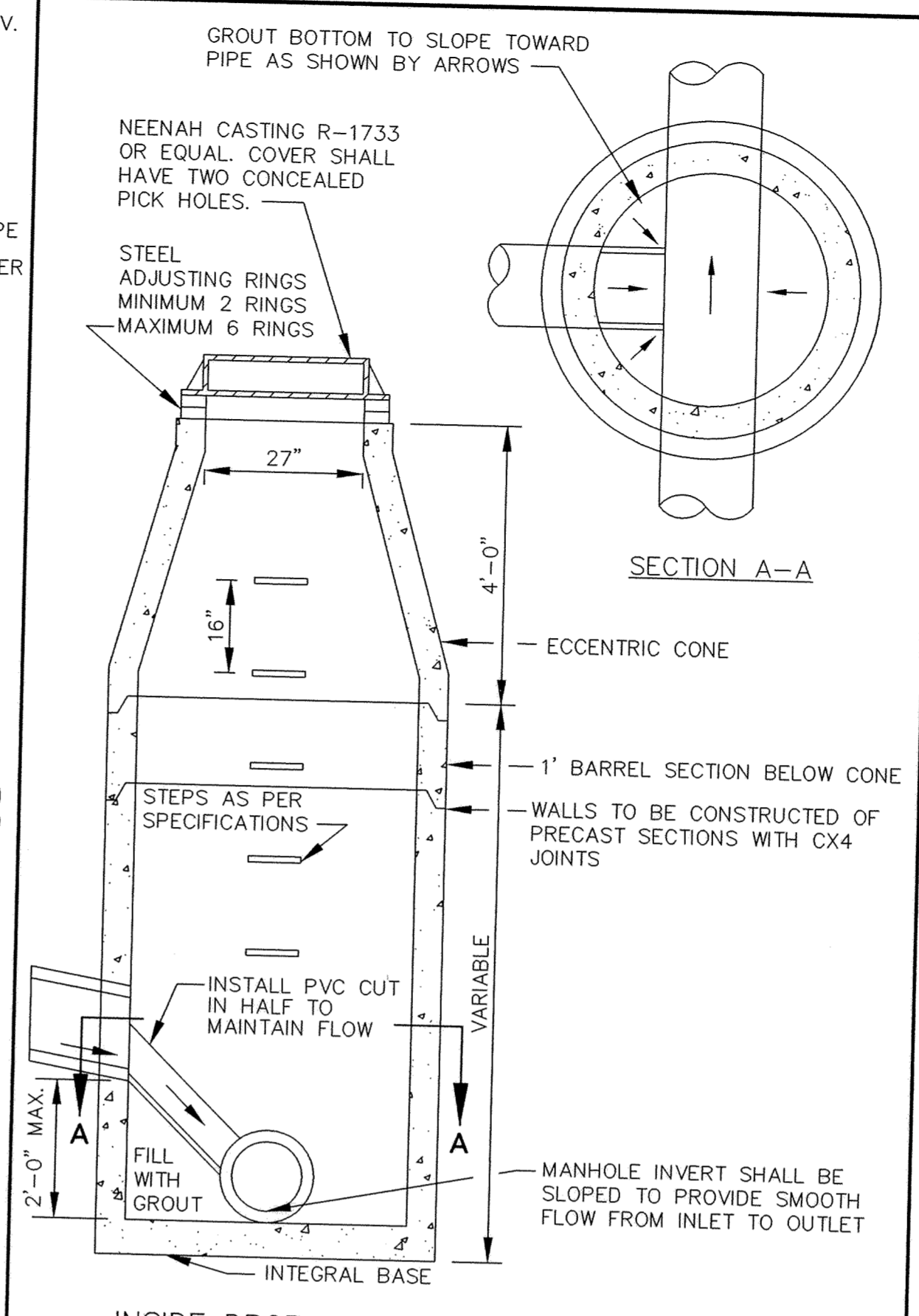
SIFCO PRODUCTS • NEW HOPE, MINNESOTA  
REORDER BY PART NUMBER 8582

SIFCO PRODUCTS • NEW HOPE, MINNESOTA  
REORDER BY PART NUMBER 8582

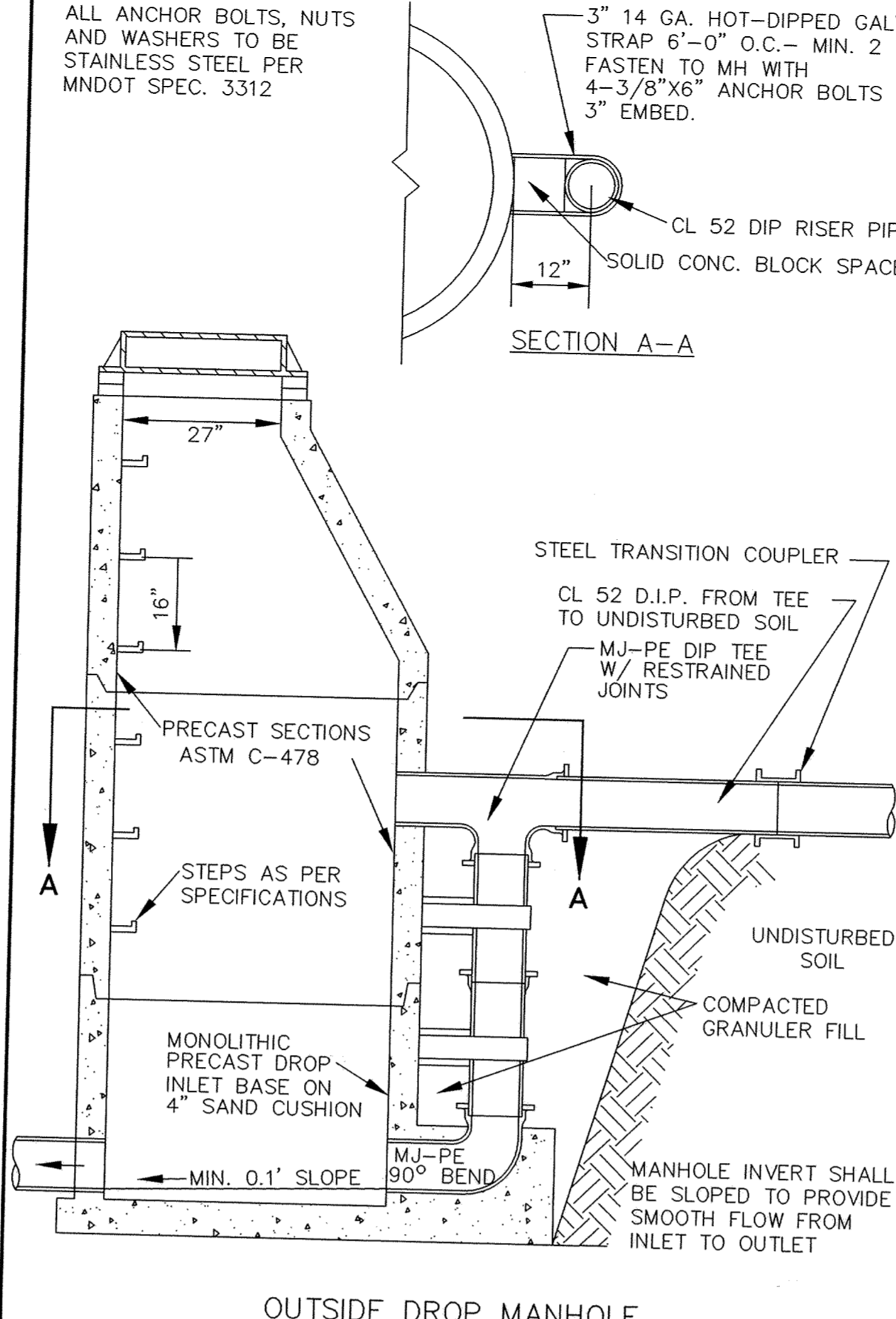
SIFCO PRODUCTS • NEW HOPE, MINNESOTA  
REORDER BY PART NUMBER 8582



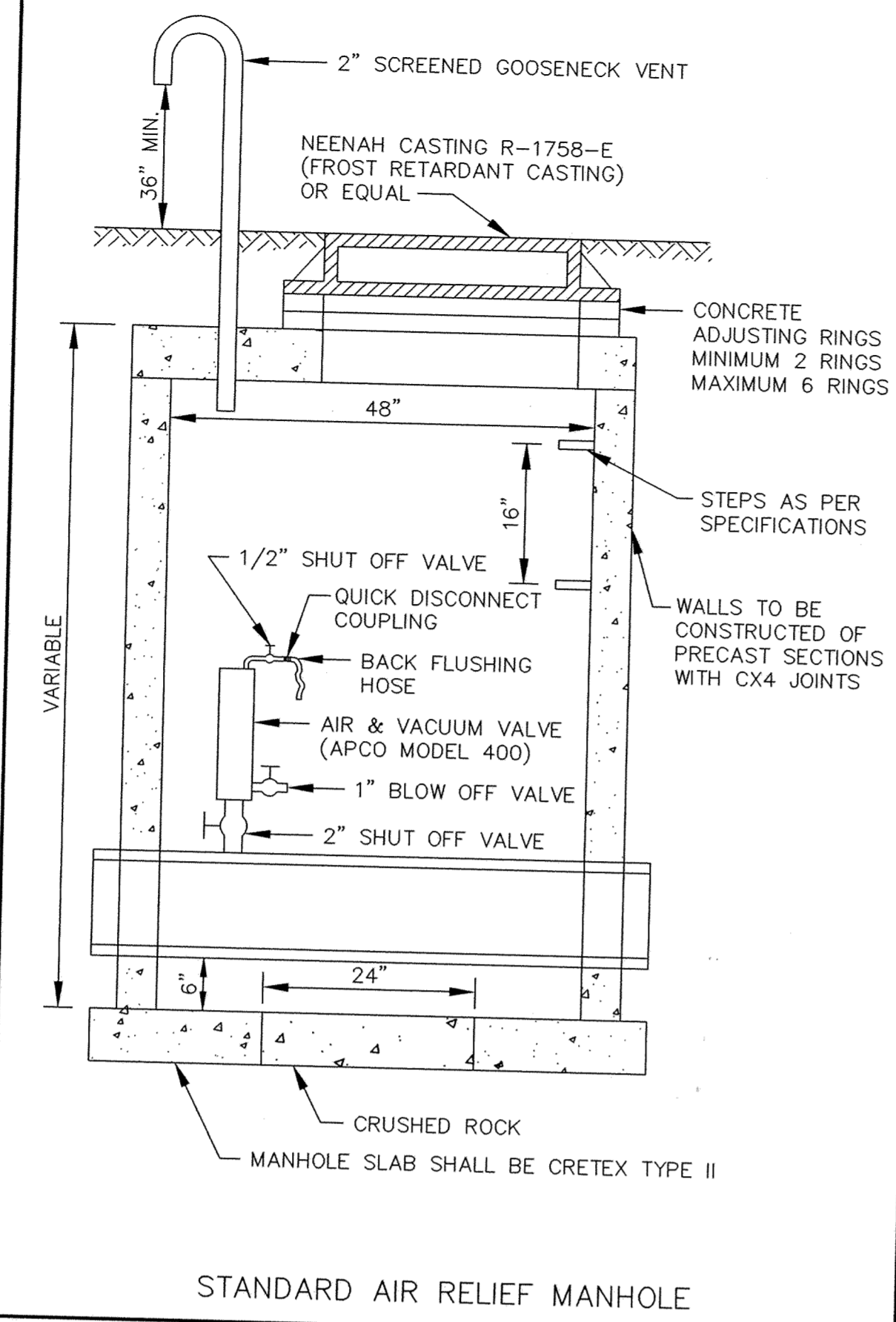
SLAB TOP MANHOLE



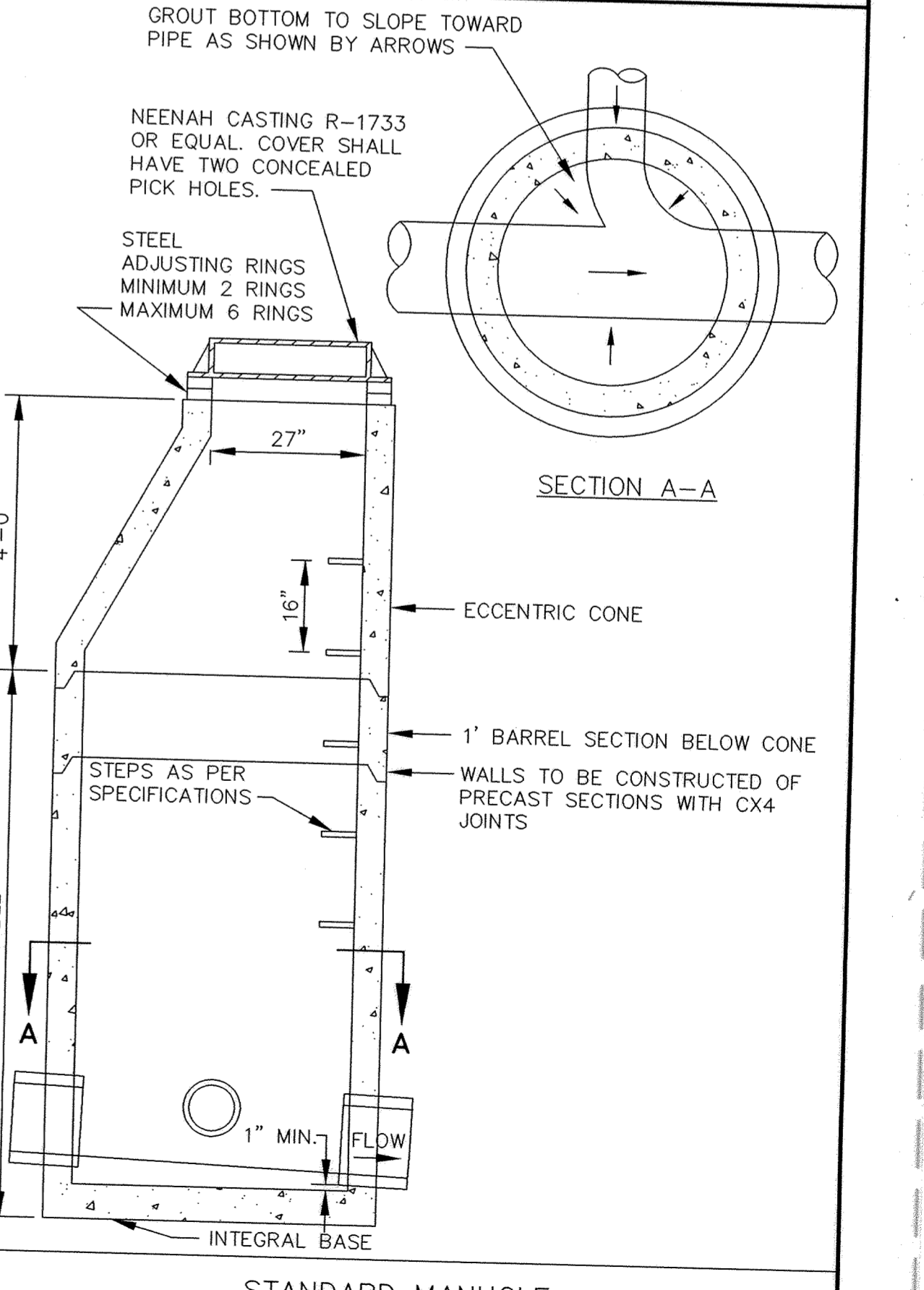
INSIDE DROP MANHOLE (TWO FEET OR LESS)



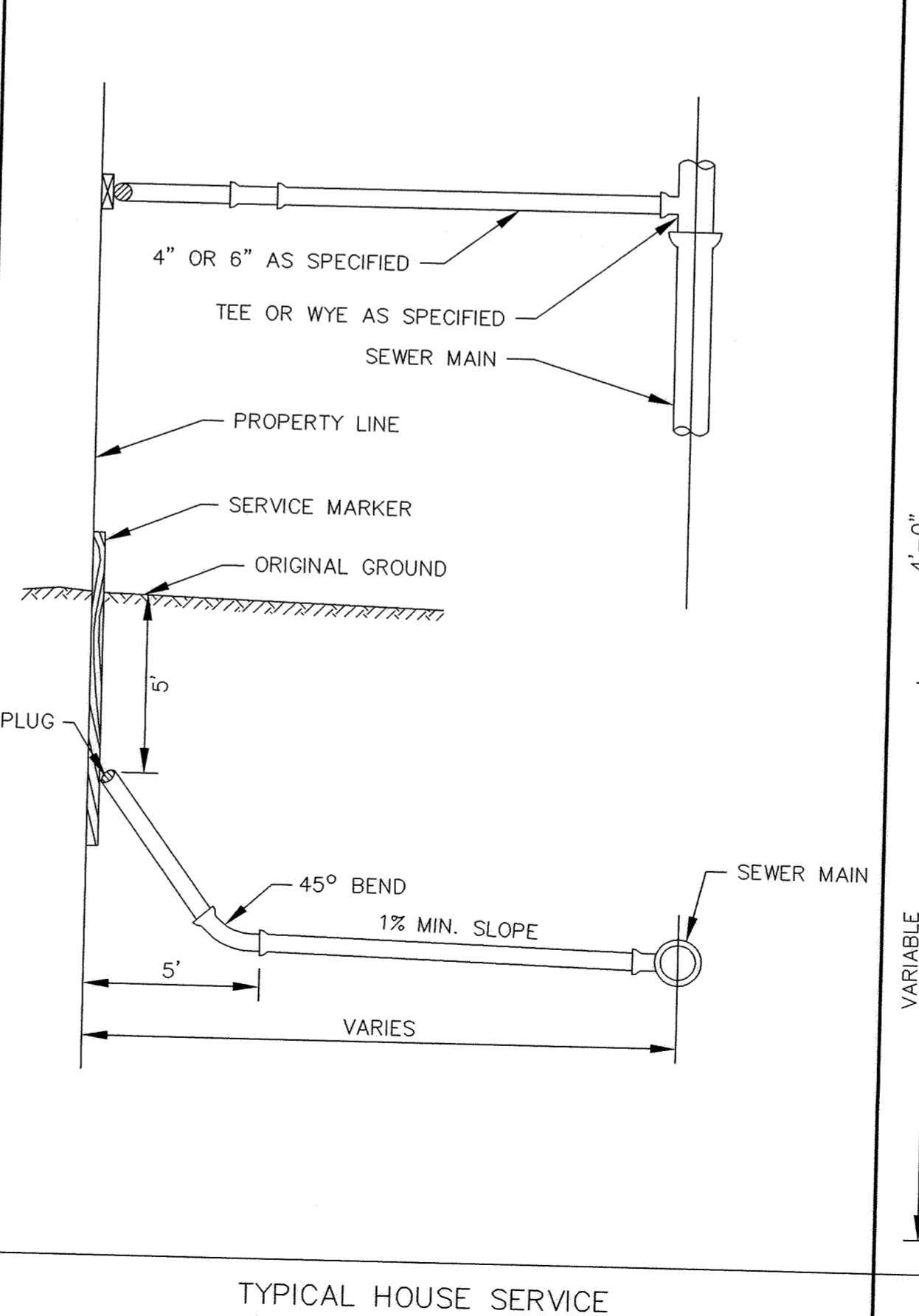
OUTSIDE DROP MANHOLE



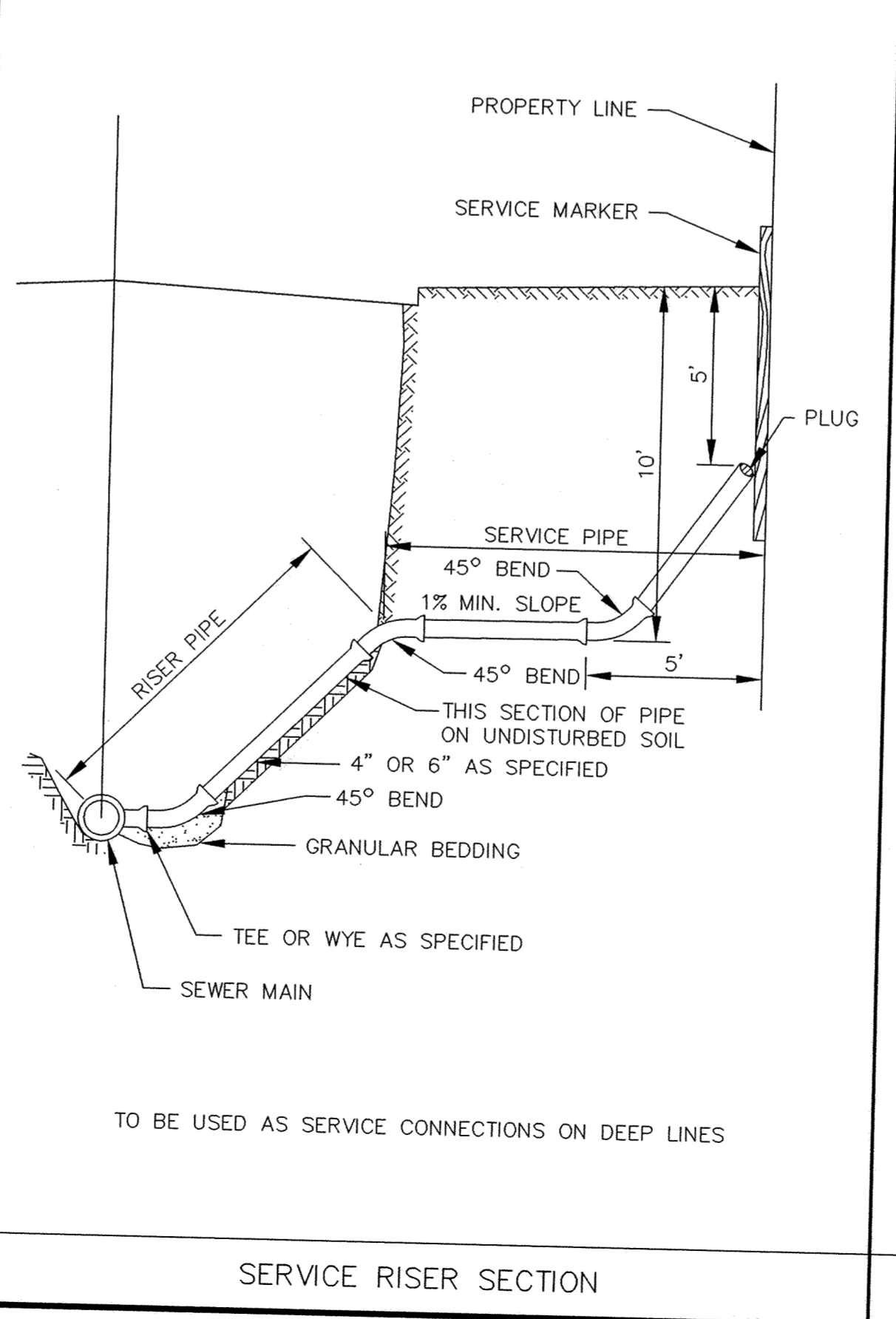
STANDARD AIR RELIEF MANHOLE



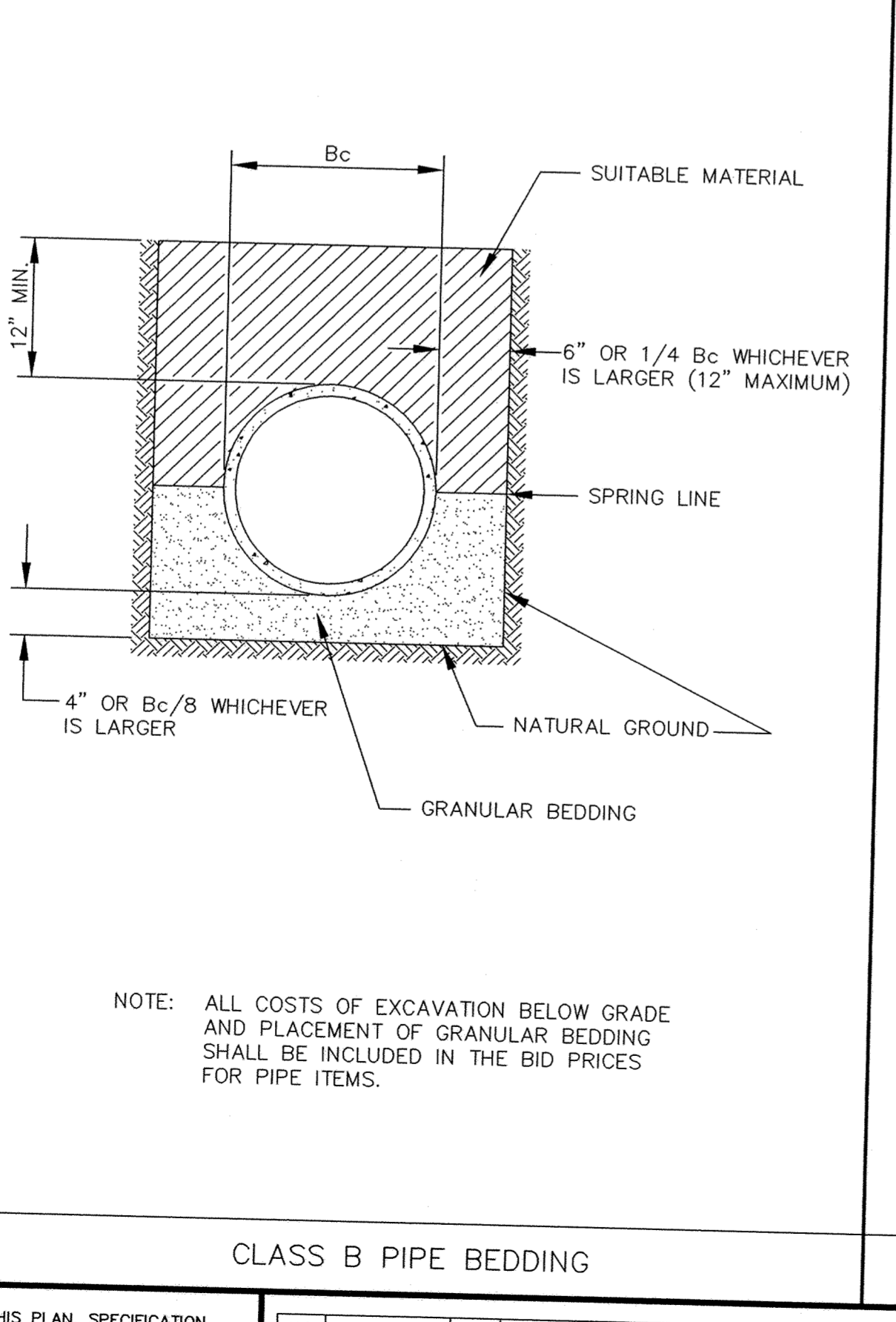
STANDARD MANHOLE



TYPICAL HOUSE SERVICE



SERVICE RISER SECTION



CLASS B PIPE BEDDING

P:\20031125\dwg\RECORD\20031125DE@d.dwg 4/5/2006 10:21:54 AM CST

CONTRACTOR: RYAN CONTRACTING CO.  
RECORD DRAWING  
CONFORMING TO CONSTRUCTION RECORDS.  
BY STEVE PFLIPSEN DATE 04/06/06  
WESTWOOD PROFESSIONAL SERVICES

**Westwood Professional Services, Inc.**  
7599 Anagram Drive  
Eden Prairie, MN 55344  
Phone: 952/937-5150 Fax: 952/937-5822

PREPARED FOR:  
**D. R. Horton, Inc.**  
20860 Kenbridge Court  
Lakeville, Minnesota 55044

I HEREBY CERTIFY THAT THIS PLAN, SPECIFICATION, OR REPORT WAS PREPARED BY ME OR UNDER MY DIRECT SUPERVISION AND THAT I AM A DULY REGISTERED PROFESSIONAL ENGINEER UNDER THE LAWS OF THE STATE OF MINNESOTA.  
DATE \_\_\_\_\_ REG. NO. \_\_\_\_\_

NO.	DATE	BY	REVISION DESCRIPTION
1	12/20/05	GKB	RECORD DRAWING

**Howard R. Green Company**  
CONSULTING ENGINEERS  
1326 ENERGY PARK DRIVE  
ST. PAUL, MINNESOTA 55108  
(612) 644-4389

**CITY OF ELK RIVER**  
TROTT BROOK FARMS 9TH ADDITION  
SANITARY SEWER DETAILS

SHEET NO.  
**9**  
OF  
**12**

TROTTS 05