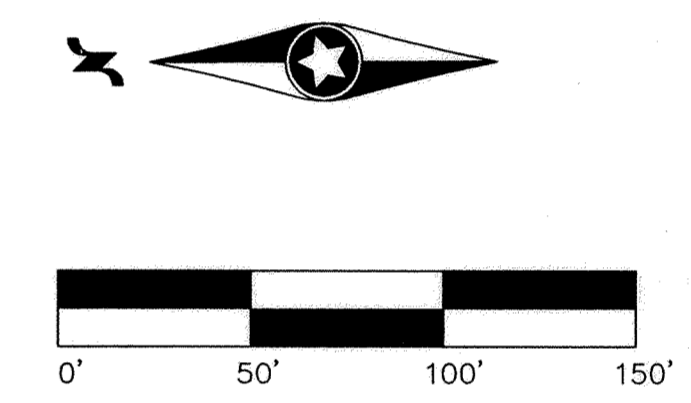
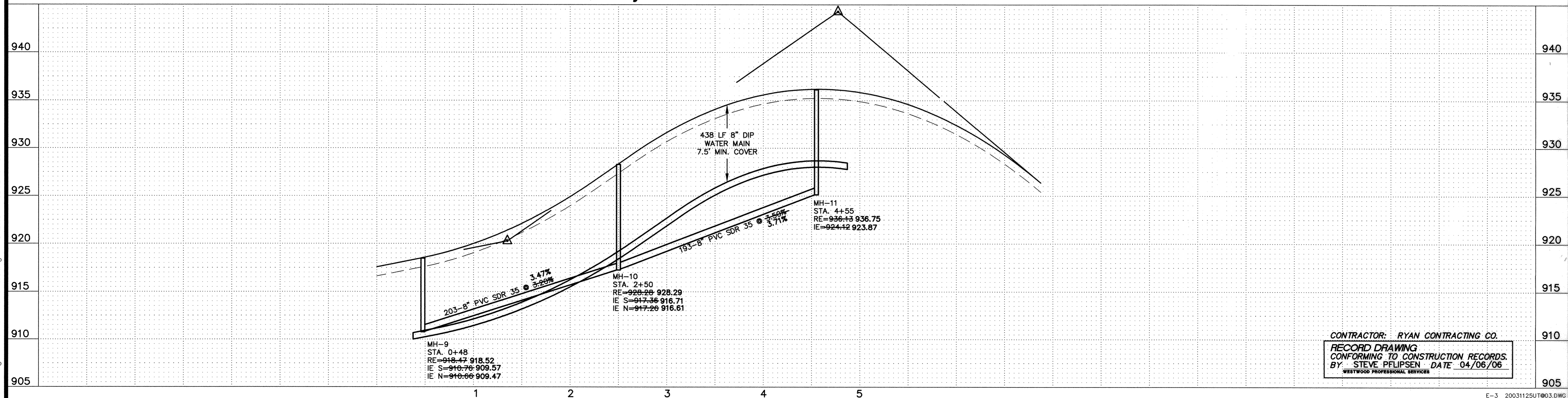


- GENERAL NOTES:**
- (XXX.X) DENOTES SANITARY SEWER SERVICE INVERT @ END OF FUTURE SERVICE STUB
 - WYE=X+XX DENOTES SANITARY SEWER SERVICE WYE LOCATED ON MAINLINE FROM DOWN STREAM M.H.
 - FLAG HYDRANTS.
 - HYDRANTS TO BE PLACED 5' BEHIND BACK OF CURB.
 - EXTEND RODS ON DEEP VALVES.
 - ALL DROP MANHOLES WITH DROPS OVER 2' TO BE CONSTRUCTED USING OUTSIDE DROPS.
 - SANITARY SEWER & WATER SERVICES TO BE EXTENDED 10' PAST ROW ON ALL LOTS
 - WATER SERVICES FOR BLOCK 4, LOTS 20-21 TO BE INSTALLED UNDER SANITARY SEWER.



Quincy Circle



CONTRACTOR: RYAN CONTRACTING CO.
 RECORD DRAWING
 CONFORMING TO CONSTRUCTION RECORDS.
 BY: STEVE PFILIPSEN DATE 04/06/06
 WESTWOOD PROFESSIONAL SERVICES

P:\20031125.dwg RECORD\20031125UT@03.dwg 4/5/2006 9:56:52 AM CST

DRAWING NUMBER

DRAWING NUMBER

DRAWING NUMBER

DRAWING NUMBER
TROTTS05
5

E-3 20031125UT@03.DWG
Latest Revision Date: 06/16/04
Date: 12/05/03 Sheet: 5 OF 12

Westwood
 Westwood Professional Services, Inc.
 7699 Anagram Drive
 Eden Prairie, MN 55344
 PHONE 952-937-5150
 FAX 952-937-5822
 TOLL FREE 1-888-937-5150
 www.westwoodps.com

I hereby certify that this plan was prepared by me or under my direct supervision and that I am a duly licensed PROFESSIONAL ENGINEER under the laws of the State of Minnesota.

 Jason M. McCarty
 Date: 04/06/06 License No. 41955

Revisions:
 02/05/04 PER CITY REVIEW (LJ)
 04/27/04 WATER MAIN CHANGE (HW)
 06/16/04 STORM SEWER REVISIONS (SHS)
 04/06/06 RECORD DRAWING (GWB)

Designed: JMM
 Checked: JMM
 Drawn: NCP
 Record Drawing by/date

Prepared for:

D.R. Horton, Inc.
 20860 Kenbridge Court
 Lakeville, Minnesota 55044

Trott Brook Farms
 9th Addition
 Elk River, Minnesota

Sanitary Sewer and Water Main Construction Plans
 Quincy Circle