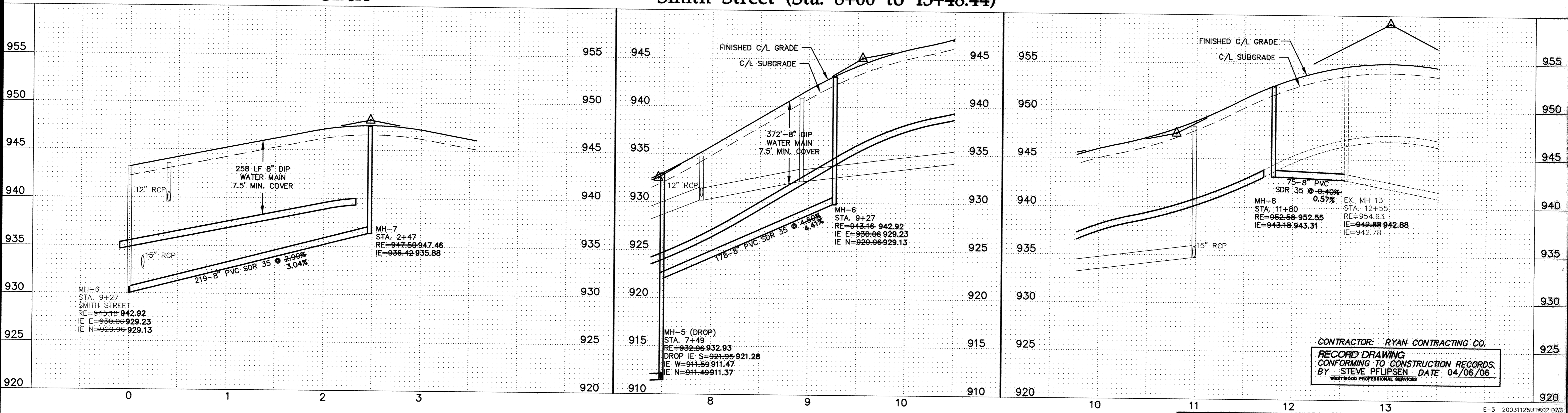
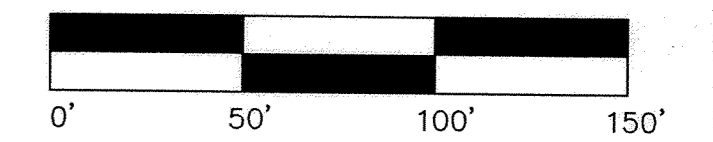


- GENERAL NOTES:**
- XXX.X DENOTES SANITARY SERVICE INVERT @ END OF FUTURE SERVICE STUB
 - WYE=X+XX DENOTES SANITARY SEWER SERVICE WYE LOCATED ON MAINLINE FROM DOWN STREAM M.H.
 - FLAG HYDRANTS.
 - HYDRANTS TO BE PLACED 5' BEHIND BACK OF CURB.
 - EXTEND RODS ON DEEP VALVES.
 - ALL DROP MANHOLES WITH DROPS OVER 2' TO BE CONSTRUCTED USING OUTSIDE DROPS.
 - SANITARY SEWER & WATER SERVICES TO BE EXTENDED 10' PAST ROW ON ALL LOTS



PA:200311251.dwg RECD:RD:20031125UT02.dwg 4/5/2006 9:51:47 AM CST

DRAWING NUMBER

DRAWING NUMBER

DRAWING NUMBER

DRAWING NUMBER

Westwood
Westwood Professional Services, Inc.
7699 Anagram Drive
Eden Prairie, MN 55344
PHONE 952-937-5150
FAX 952-937-5822
TOLL FREE 1-888-937-5150
www.westwoodps.com

I hereby certify that this plan was prepared by me or under my direct supervision and that I am a duly licensed PROFESSIONAL ENGINEER under the laws of the State of Minnesota.
Jason M. McCarty
Jason M. McCarty
Date: 04/06/06 License No. 41955

Revisions:

02/05/04 PER CITY REVIEW (CL)	
04/22/04 WATER MAIN CHANGE (HW)	
04/19/04 STORM SEWER REVISIONS (SHS)	
04/06/06 RECORD DRAWING (PHS)	

Designed: JMM
Checked: JMM
Drawn: NCP
Record Drawing by/date:

Prepared for:
D.R. Horton, Inc.
20860 Kenbridge Court
Lakeville, Minnesota 55044

Trott Brook Farms
9th Addition
Elk River, Minnesota

Sanitary Sewer and Water Main Construction Plans
185th Circle and Smith Street (Sta. 8+00 to 13+48.44)
Date: 12/05/03 Sheet: 4 OF 12
E-3 20031125UT02.DWG
Latest Revision Date: 06/16/04