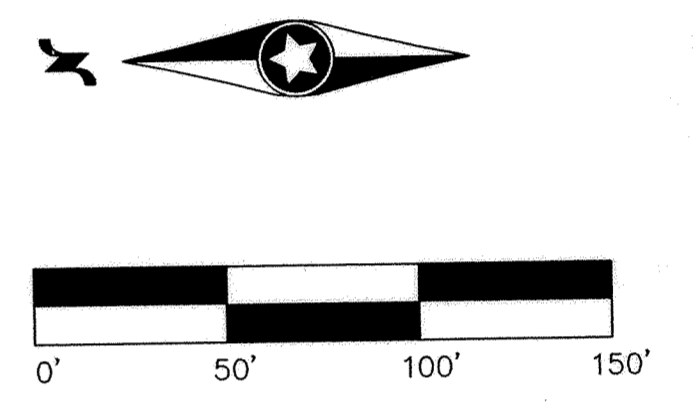
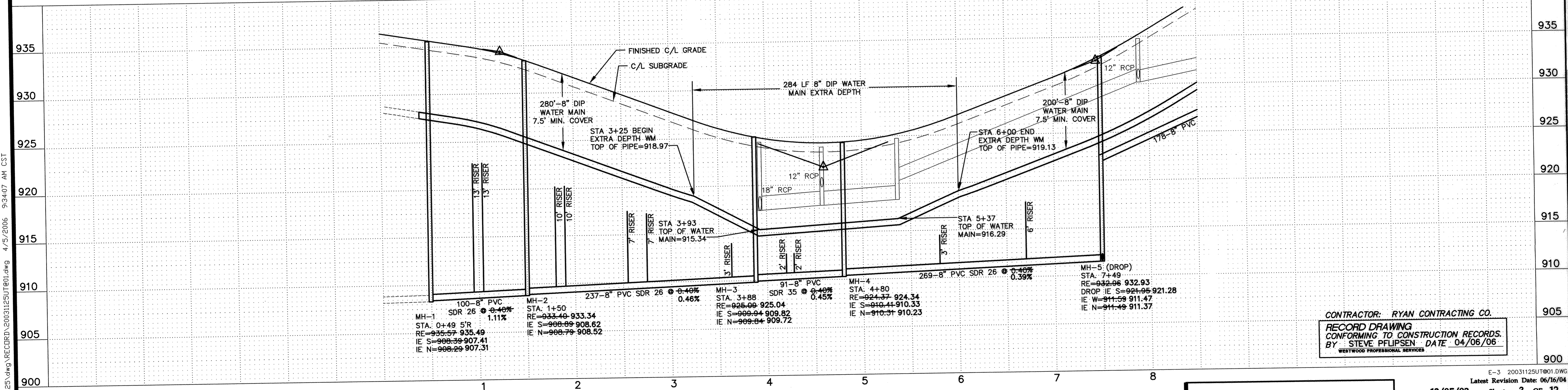


GENERAL NOTES:

- XXX.X DENOTES SANITARY SEWER SERVICE INVERT @ END OF FUTURE SERVICE STUB
- WYE=X+XX DENOTES SANITARY SEWER SERVICE WYE LOCATED ON MAINLINE FROM DOWN STREAM M.H.
- FLAG HYDRANTS.
- HYDRANTS TO BE PLACED 5' BEHIND BACK OF CURB.
- EXTEND RODS ON DEEP VALVES.
- ALL DROP MANHOLES WITH DROPS OVER 2' TO BE CONSTRUCTED USING OUTSIDE DROPS.
- SANITARY SEWER & WATER SERVICES TO BE EXTENDED 10' PAST ROW ON ALL LOTS



Smith Street (Sta. 0+00 to 8+00)



CONTRACTOR: RYAN CONTRACTING CO.
 RECORD DRAWING
 CONFORMING TO CONSTRUCTION RECORDS.
 BY: STEVE PFLIPSEN DATE 04/06/06
 WESTWOOD PROFESSIONAL SERVICES

E-3 20031125UT001.DWG
 Latest Revision Date: 06/16/04
 Date: 12/05/03 Sheet: 3 OF 12

**Trott Brook Farms
 9th Addition**
 Elk River, Minnesota

**Sanitary Sewer and
 Water Main
 Construction Plans**
 Smith Street (Sta. 0+00 to 8+00)

PL:\20031125.dwg\RECORD\20031125UT001.dwg 4/15/2006 9:34:07 AM CST

DRAWING NUMBER
TROTTR905
3

Westwood
 Westwood Professional Services, Inc.
 7699 Anagram Drive
 Eden Prairie, MN 55344
 PHONE 952-937-5150
 FAX 952-937-5822
 TOLL FREE 1-888-937-5150
 www.westwoodps.com

I hereby certify that this plan was prepared by me or under my direct supervision and that I am a duly licensed PROFESSIONAL ENGINEER under the laws of the State of Minnesota.
 Jason M. McCarty
 Date: 04/06/06 License No. 41955

Revisions:

02/05/04 PER CITY REVIEW (CL)	Checked: JMM
06/16/04 STORM SEWER REVIEW (SHS)	Checked: JMM
04/06/06 RECORD DRAWING (GKB)	Drawn: NCF

Prepared for:
 D.R. Horton, Inc.
 20860 Kenbridge Court
 Lakeville, Minnesota 55044

Record Drawing by/date: