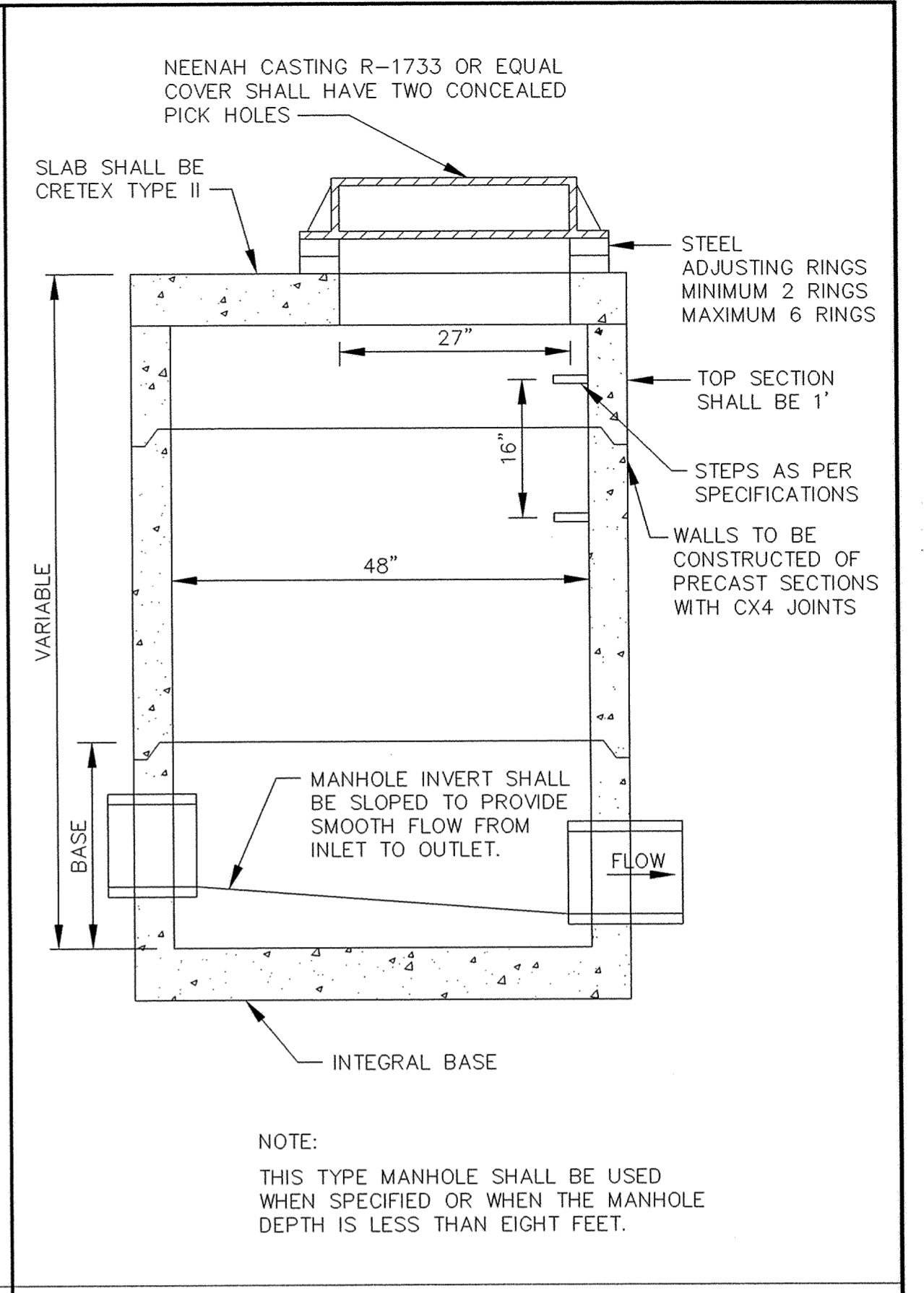
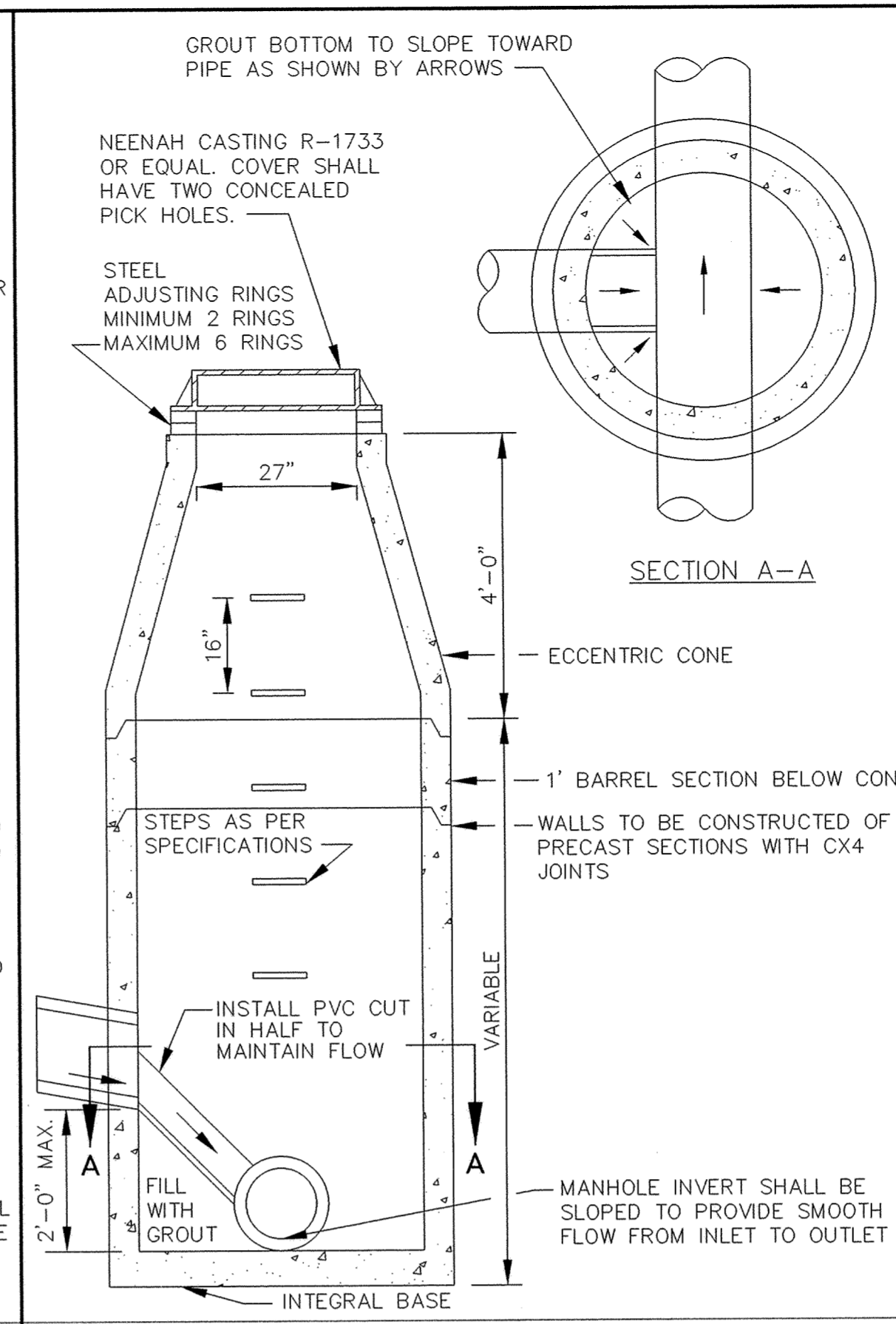


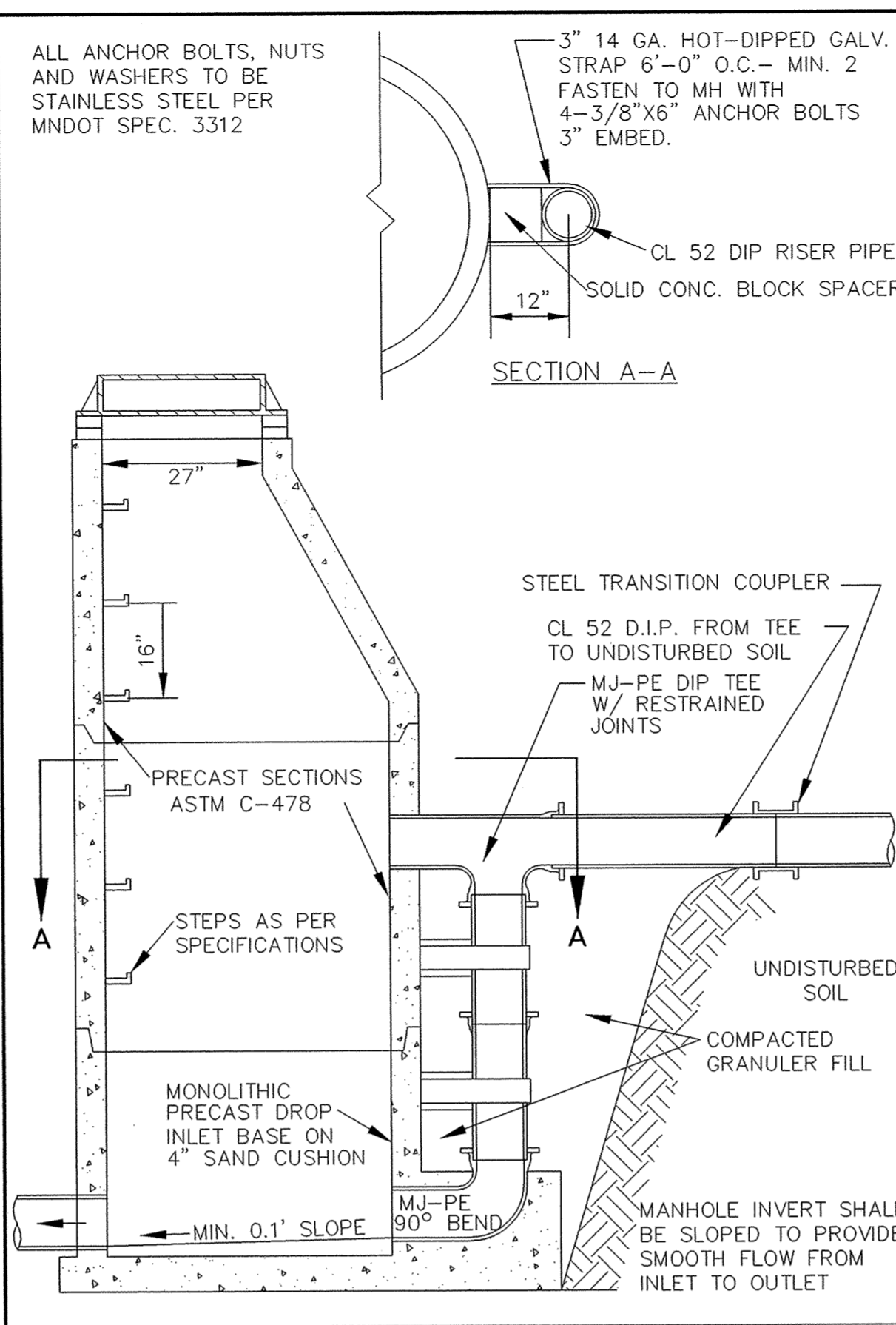
SAFCD PRODUCTS • NEW HOPE, MINNESOTA  
REPRODUCED BY PART NUMBER 0322  
PROTECTIVE COVER OF PRINT OR PHOTO NOT TO BE USED



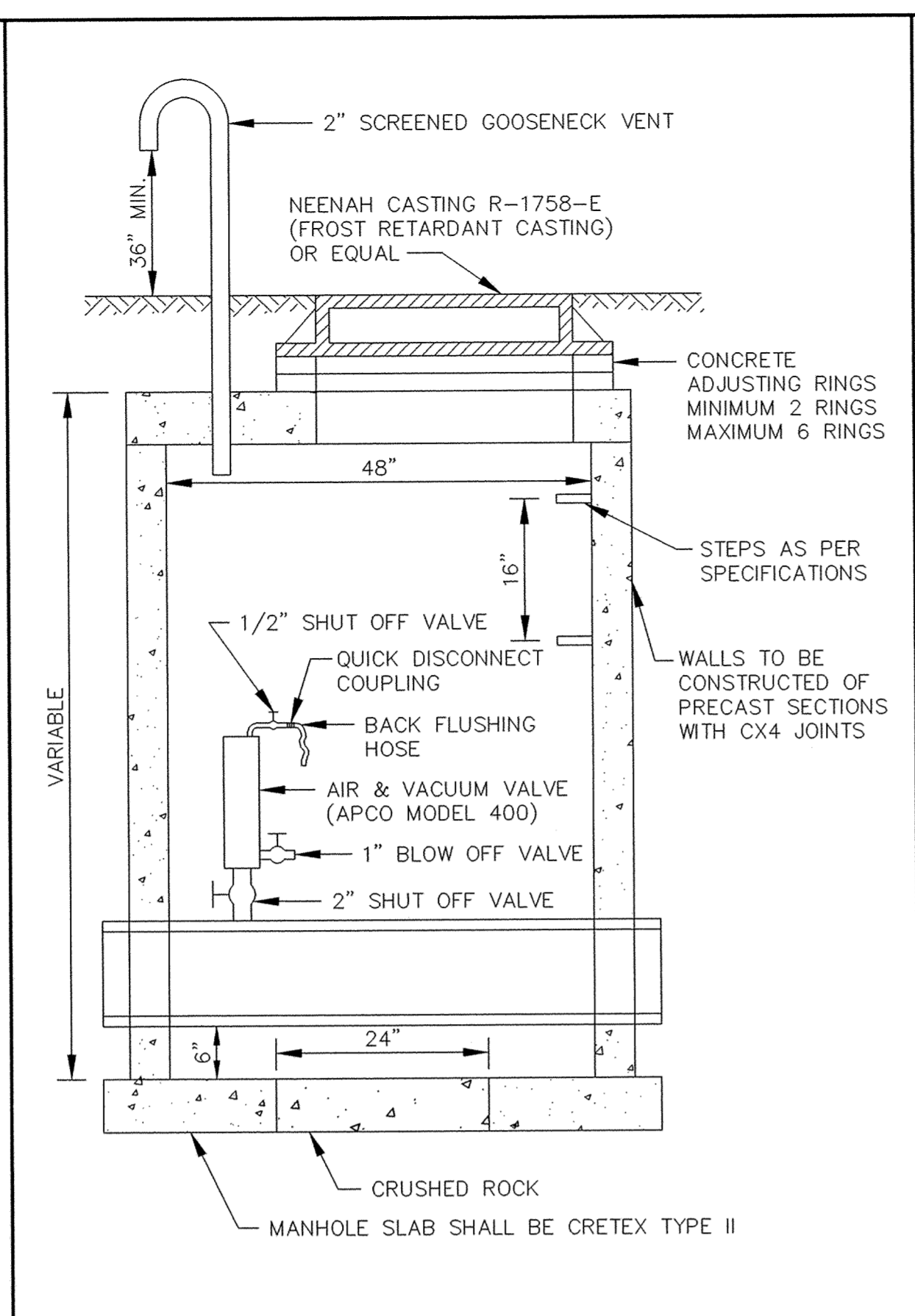
SLAB TOP MANHOLE



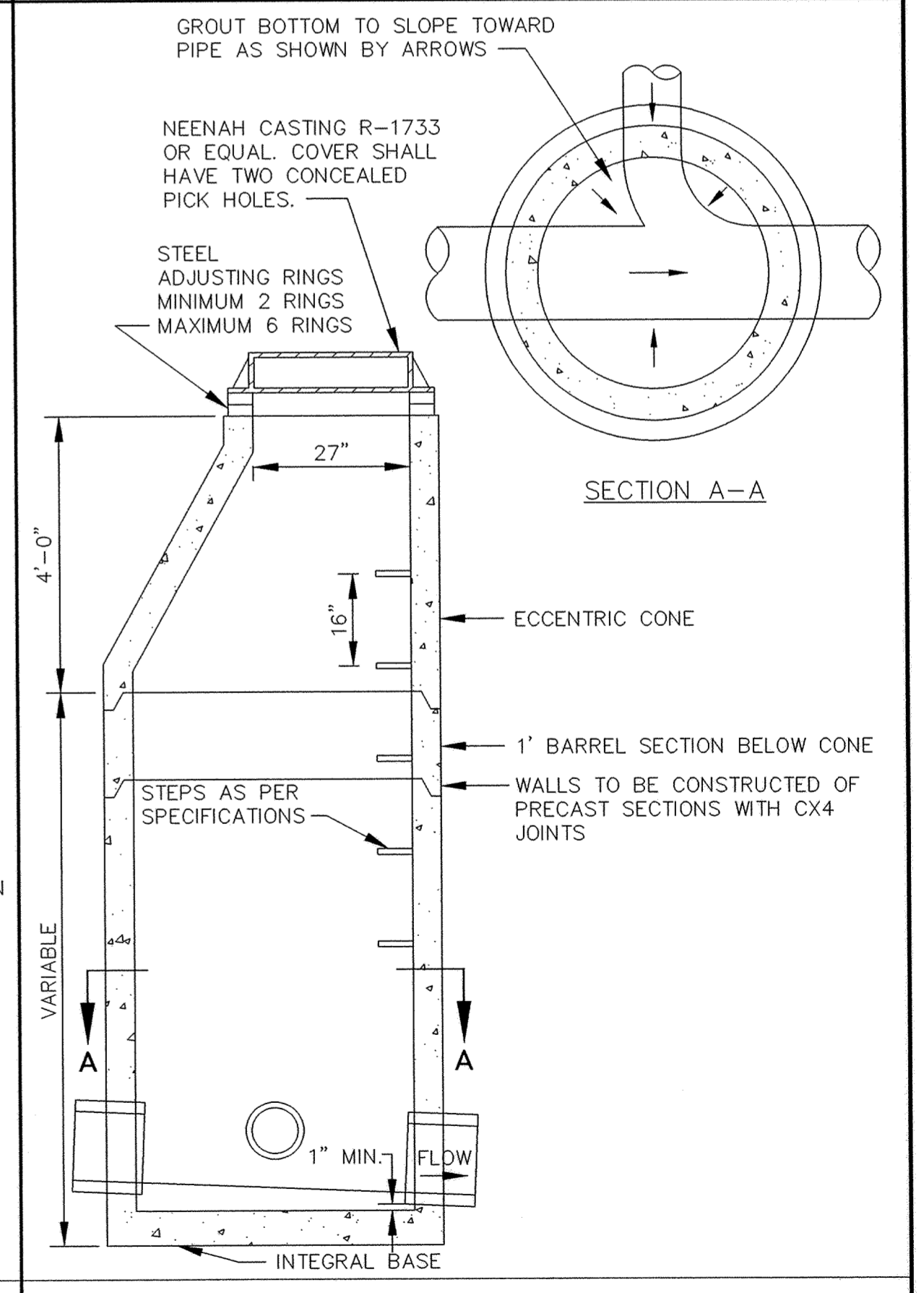
INSIDE DROP MANHOLE (TWO FEET OR LESS)



OUTSIDE DROP MANHOLE

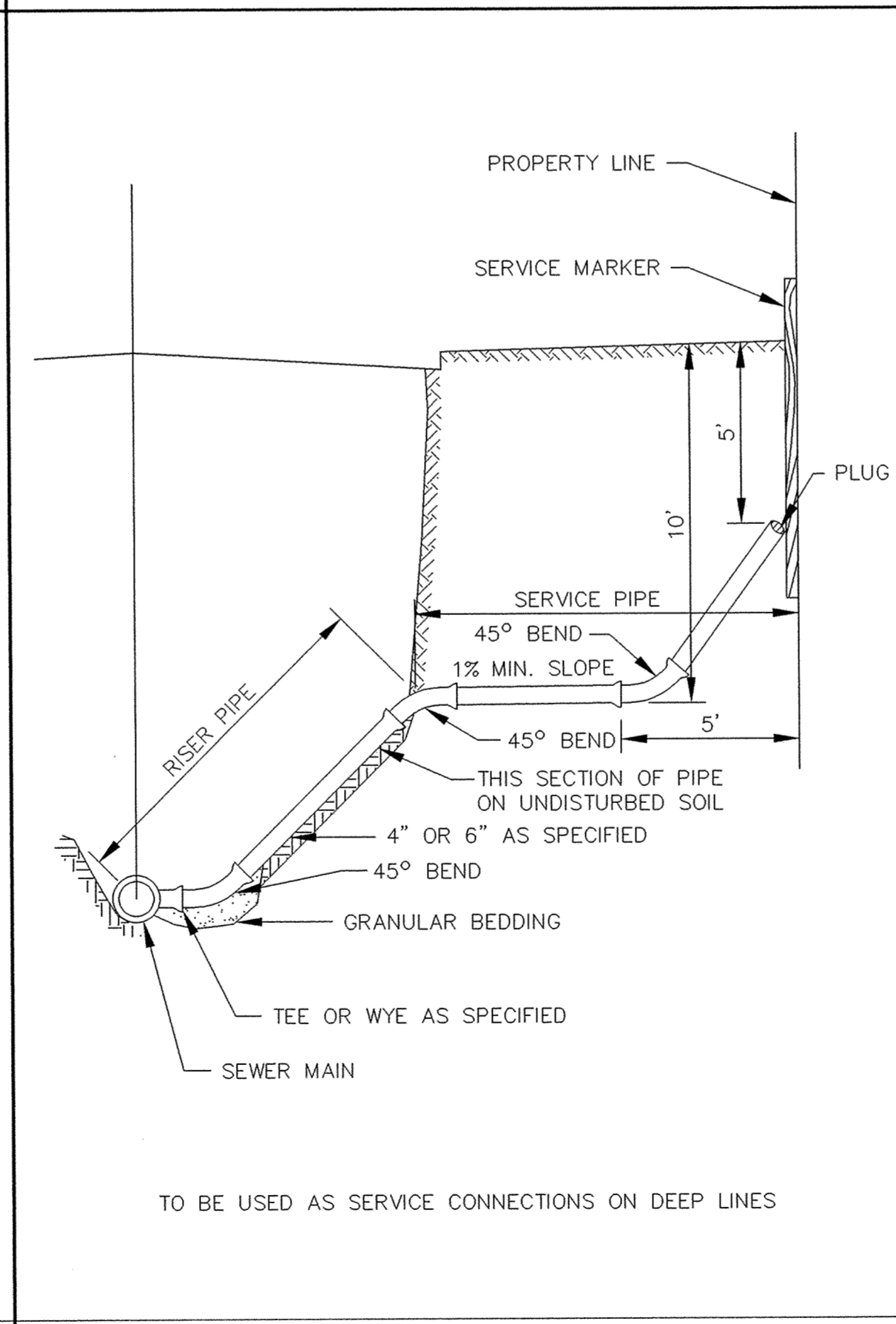


STANDARD AIR RELIEF MANHOLE



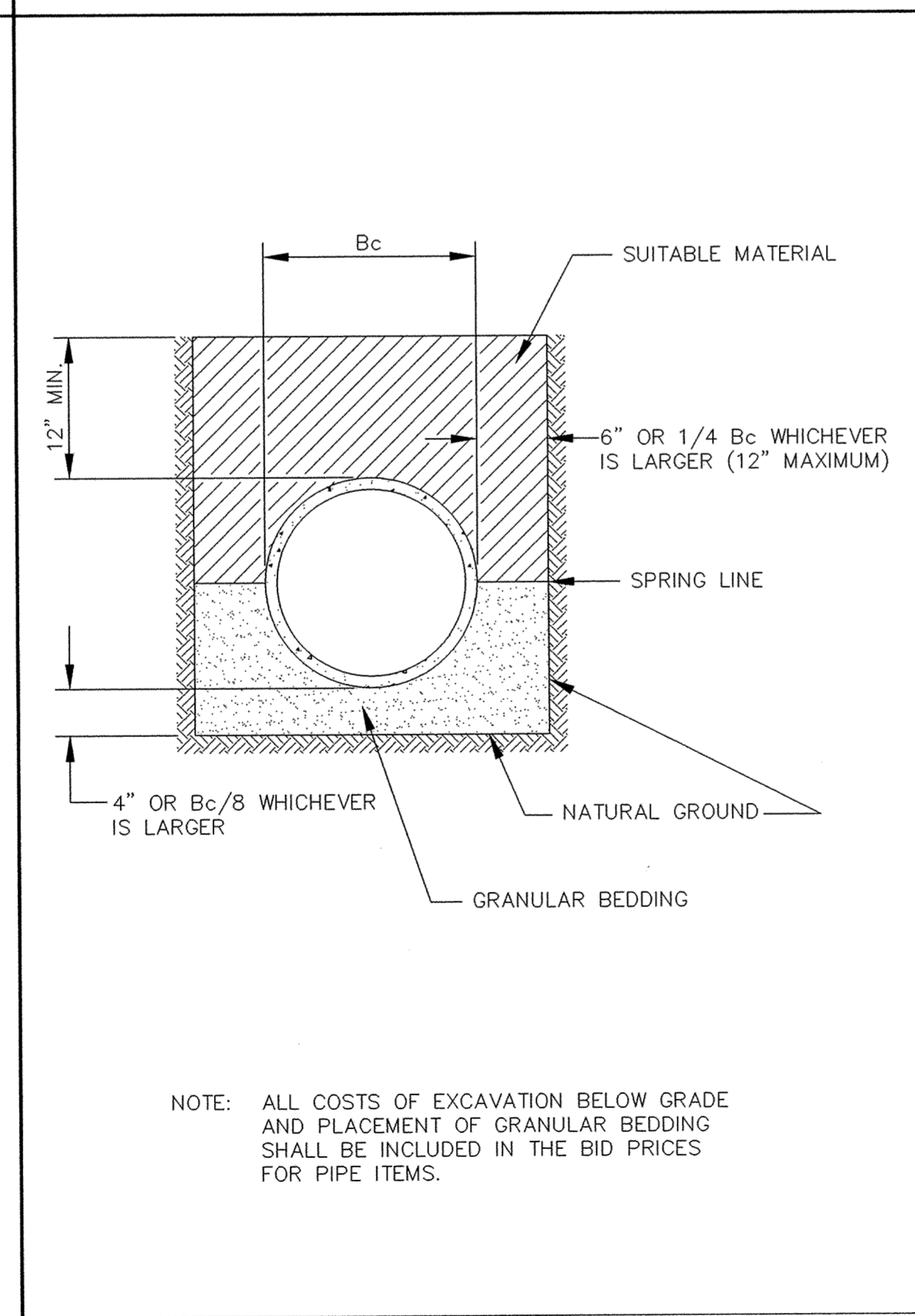
CONTRACTOR: RYAN CONTRACTING CO.  
RECORD DRAWING  
CONFORMING TO CONSTRUCTION RECORDS.  
BY AL SPILLES DATE 05/29/03  
WESTWOOD PROFESSIONAL SERVICES

TYPICAL HOUSE SERVICE



TO BE USED AS SERVICE CONNECTIONS ON DEEP LINES

SERVICE RISER SECTION



NOTE: ALL COSTS OF EXCAVATION BELOW GRADE AND PLACEMENT OF GRANULAR BEDDING SHALL BE INCLUDED IN THE BID PRICES FOR PIPE ITEMS.

CLASS B PIPE BEDDING

P:\20011085\dwg\RECDRAW\20011085DE1.dwg 05/29/2003 09:36:17 AM CDT

**Westwood Professional Services, Inc.**  
7599 Anagram Drive  
Eden Prairie, MN 55344  
Phone: 952/937-5150 Fax: 952/937-5822

PREPARED FOR:  
**D. R. Horton, Inc.**  
20860 Kenbridge Court  
Lakeville, Minnesota 55044

DESIGNED BY: ----	DRAWN BY: ---
APPROVED: ----	JOB NUMBER ----
CAD DATE: April 14, 1999 11:14:59 a.m.	
CAD FILE: 230000m\ER-SM.DWG	

I HEREBY CERTIFY THAT THIS PLAN, SPECIFICATION, OR REPORT WAS PREPARED BY ME OR UNDER MY DIRECT SUPERVISION AND THAT I AM A DULY REGISTERED PROFESSIONAL ENGINEER UNDER THE LAWS OF THE STATE OF MINNESOTA.  
DATE \_\_\_\_\_ REG. NO. \_\_\_\_\_

NO.	DATE	BY	REVISION DESCRIPTION
1	05/29/03	GKB	RECORD DRAWING

1326 ENERGY PARK DRIVE  
ST. PAUL, MINNESOTA 55108  
(612) 644-4389  
**Howard R. Green Company**  
CONSULTING ENGINEERS

**CITY OF ELK RIVER**  
**TROTT BROOK FARMS EIGHTH ADDITION**  
**SANITARY SEWER DETAILS**

SHEET NO.  
**13**  
OF  
**17**