

Construction Plans

for

Sanitary Sewer, Water Main, Storm Sewer and Streets

for

Trott Brook Farms Eighth Addition Elk River, Minnesota

Prepared for:

D.R. Horton. Inc. - Minnesota
20860 Kenbridge Court
Lakeville, Minnesota 55044
Contact: Don Patton
Phone: (952) 985-7823
Fax: (952) 985-7800

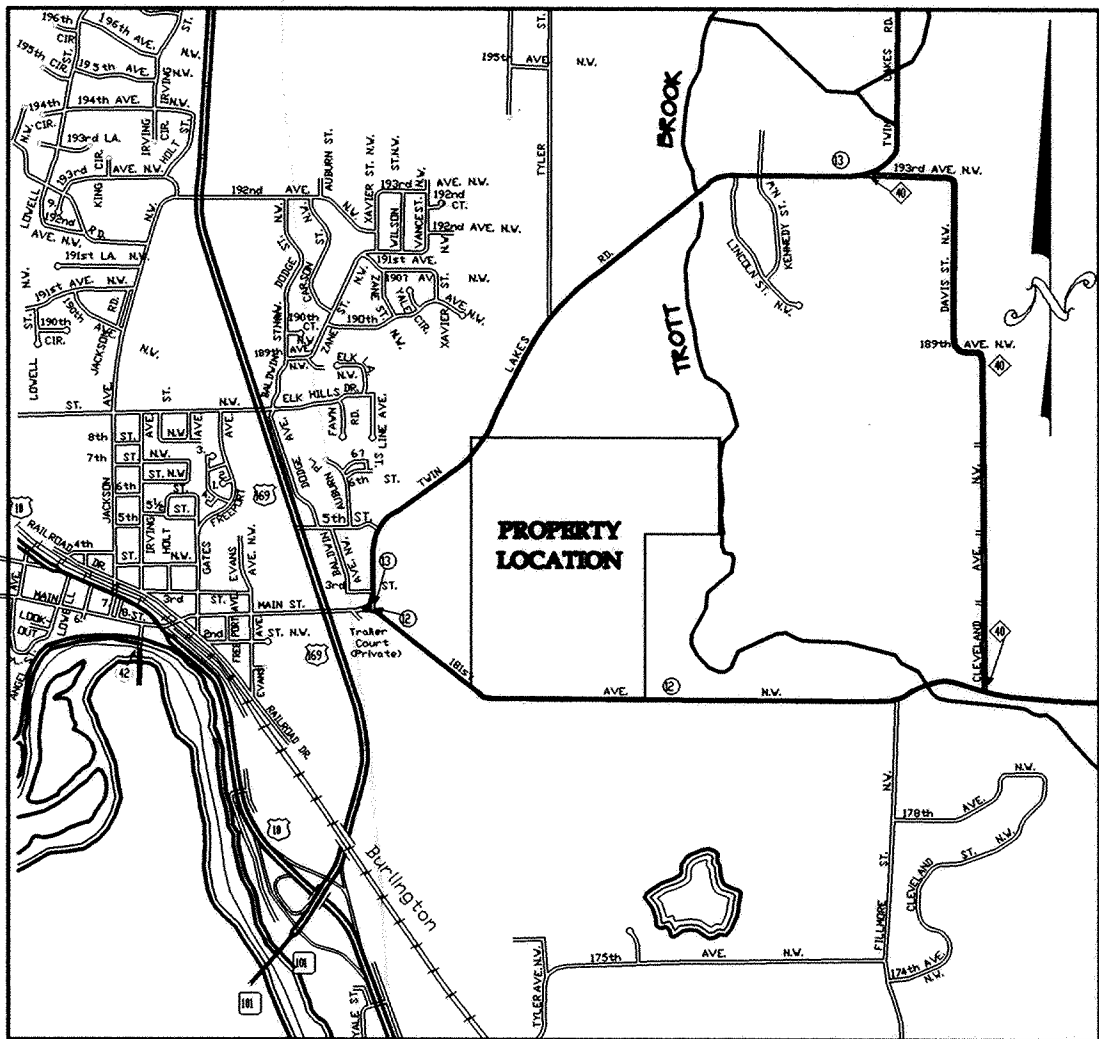
Prepared by:

Westwood Professional Services, Inc.
7599 Anagram Drive
Eden Prairie, MN 55344
Phone: 952/937-5150 Fax: 952/937-5822

Project Number: 20011085
Contact: Francis D. Hagen, II

INDEX	
SHEET NO.	DESCRIPTION
1	COVER
2	OVERALL PLAN
2A	SANITARY SEWER/STORM SEWER CONSTRUCTION – 185TH AVENUE
2B	SANITARY SEWER CONSTRUCTION – ULYSSES STREET
3–5	SANITARY SEWER & WATER MAIN – TROTT BROOK PARKWAY
6 & 7	SANITARY SEWER & WATER MAIN – OLSON STREET
8–10	STORM SEWER & STREET CONSTRUCTION – TROTT BROOK PARKWAY
11 & 12	STORM SEWER & STREET CONSTRUCTION – OLSON STREET
13	SANITARY SEWER DETAILS
14	WATER MAIN DETAILS
15	STORM SEWER DETAILS
16	STREET DETAILS
17	COUNTY ROAD 13 TURN LANE & OUTLET CONTROL STRUCTURE (O.C.S.) DETAILS

Vicinity Map



(Not to Scale)

NO.	DATE	REVISION	SHEETS
1	03/22/02	GRADE/LOT CHANGES	ALL
2	05/20/02	CITY REVIEW	ALL
3	06/14/02	RAISE TYLER COURT INTERSECTION	ALL
4	06/27/02	SANITARY SEWER EXTENSION	1,2,2A,2B,3
5	07/17/02	SANITARY SEWER EXTENSION	1,2A,2B
6	05/29/03	RECORD DRAWINGS	ALL

CONTRACTOR: RYAN CONTRACTING CO.
RECORD DRAWING
CONFORMING TO CONSTRUCTION RECORDS.
BY AL SPILLES DATE 05/29/03
WESTWOOD PROFESSIONAL SERVICES

Construction Plans

for

**Sanitary Sewer, Water Main, Storm Sewer
and Streets**

for

Trott Brook Farms Eighth Addition
Elk River, Minnesota

Date: 12/21/01 Sheet: 1 of 17