

P:\99403\dwg\RECORD\940303D1@3.dwg 05/29/2003 09:11:38 AM CDT

CONTRACTOR: RYAN CONTRACTING CO.
RECORD DRAWING
CONFORMING TO CONSTRUCTION RECORDS.
BY AL SPILLES DATE 05/29/03
WESTWOOD PROFESSIONAL SERVICES, INC.

Westwood Professional Services, Inc.
7599 Anagram Drive
Eden Prairie, MN 55344
Phone: 952/937-5150 Fax: 952/937-5822

PREPARED FOR:
D.R. Horton, INC.
3459 Washington Drive
Suite 204
Eagan, Minnesota 55122

DESIGNED BY: --- DRAWN BY: ---
APPROVED: --- JOB NUMBER ---
CAD DATE: April 14, 1999 11:14:59 a.m.
CAD FILE: 230000m\ER-SM.DWG

I HEREBY CERTIFY THAT THIS PLAN, SPECIFICATION,
OR REPORT WAS PREPARED BY ME OR UNDER MY DIRECT
SUPERVISION AND THAT I AM A DULY REGISTERED
PROFESSIONAL ENGINEER UNDER THE LAWS OF THE
STATE OF MINNESOTA.
DATE _____ REG. NO. _____

NO.	DATE	BY	REVISION DESCRIPTION
1	05/29/03	GKB	RECORD DRAWING

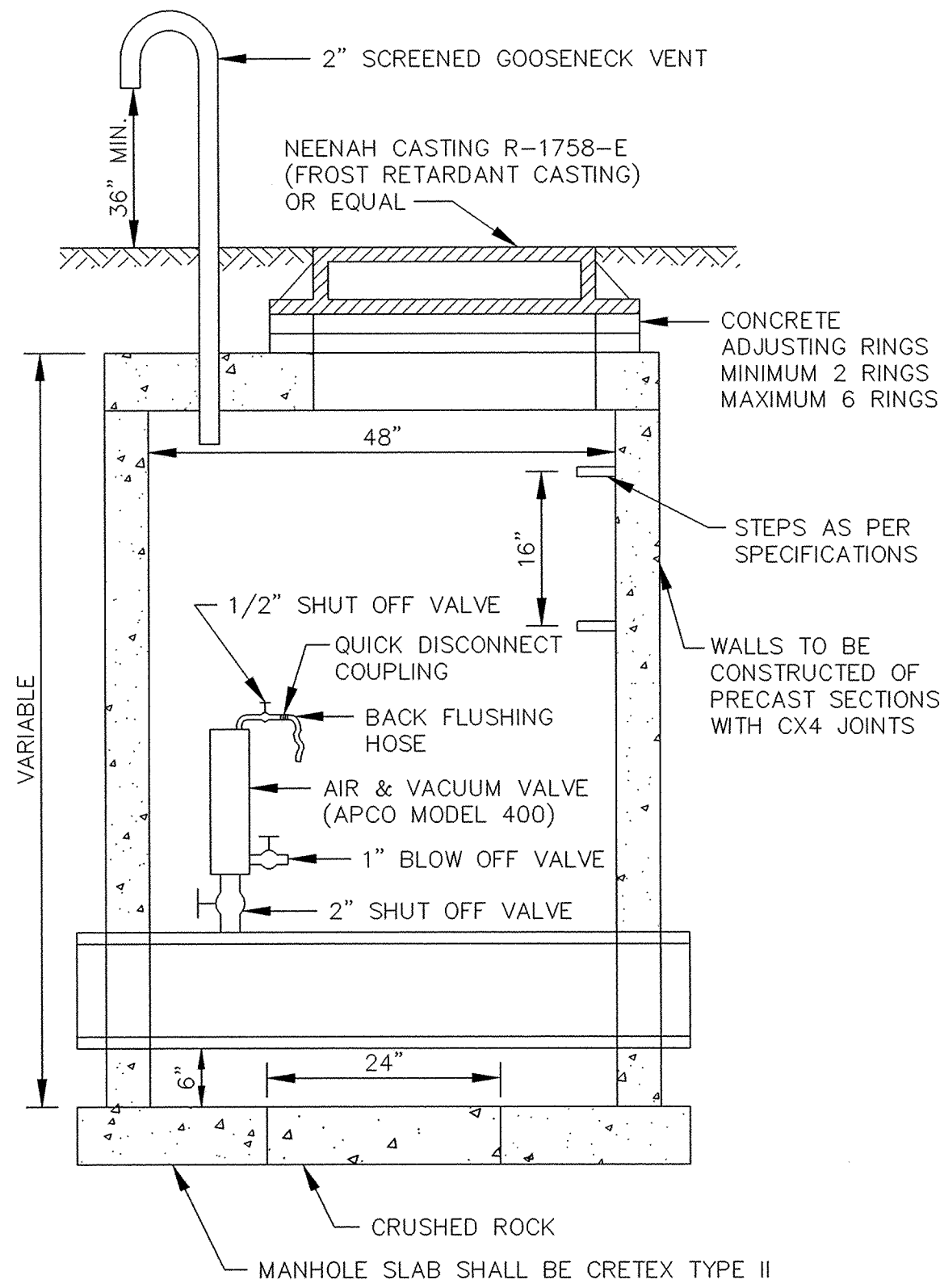


Howard R. Green Company
CONSULTING ENGINEERS

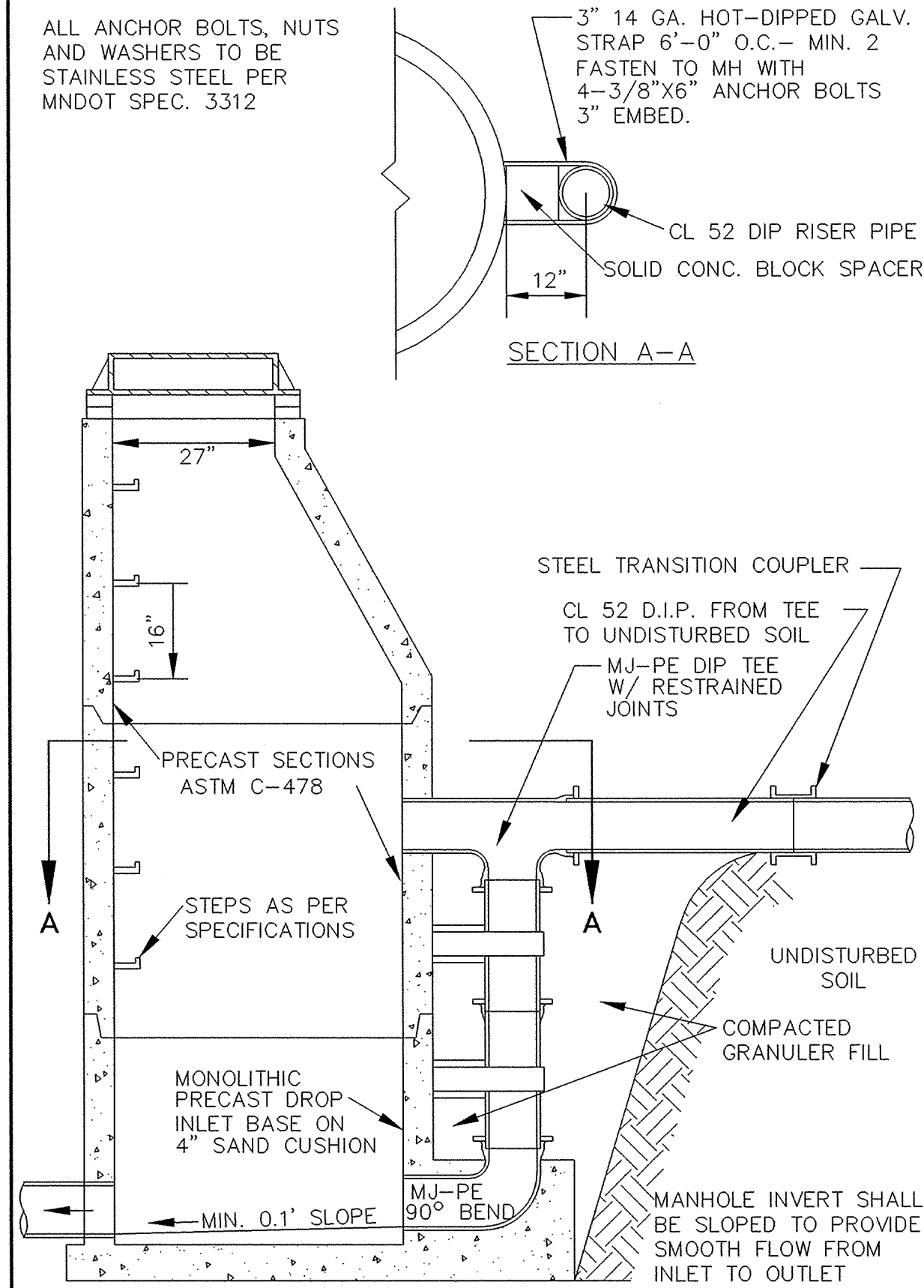
1326 ENERGY PARK DRIVE
ST. PAUL, MINNESOTA 55108
(612) 644-4389

CITY OF ELK RIVER
TROTT BROOK FARMS 6TH ADDITION
SANITARY SEWER DETAILS

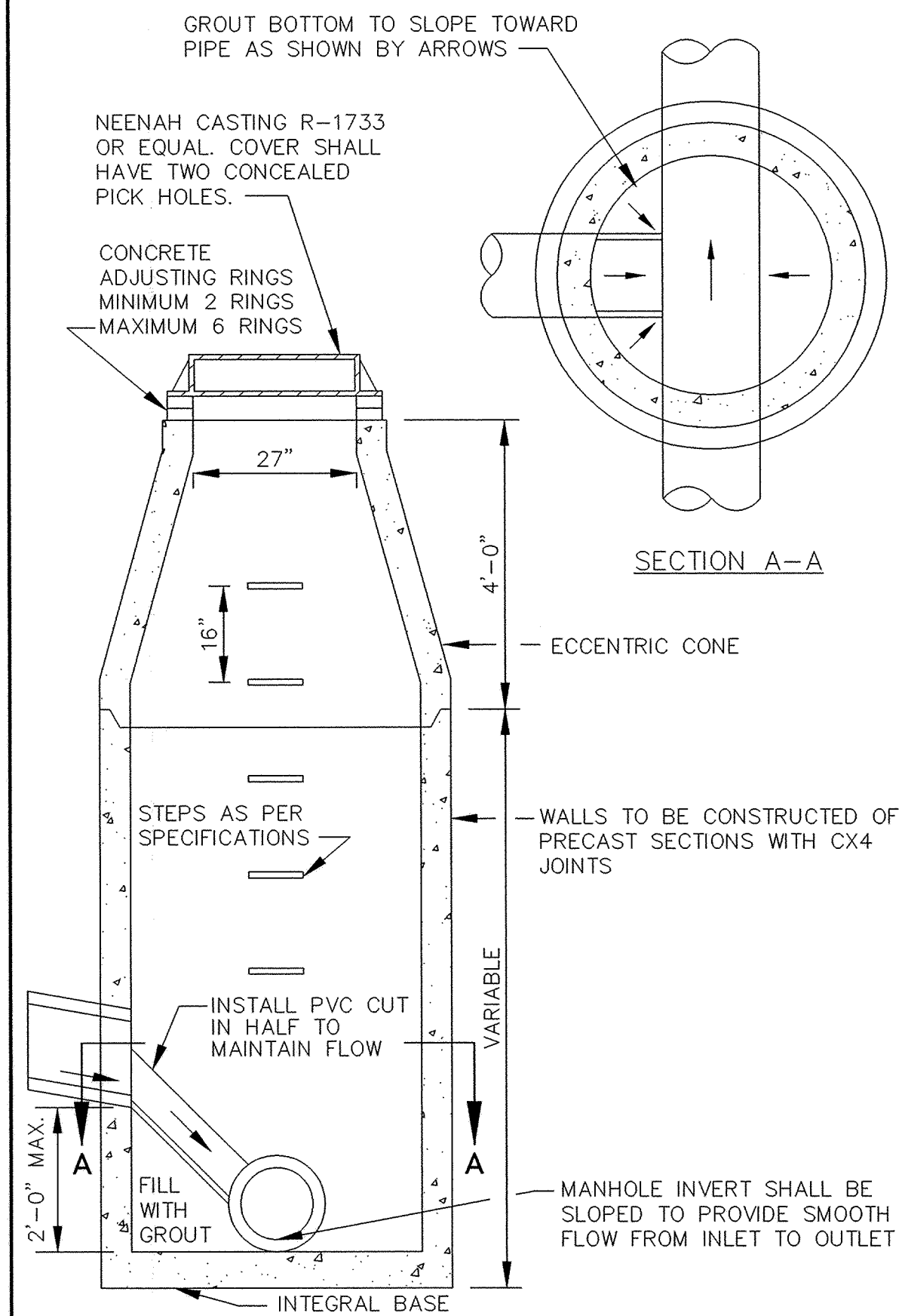
SHEET NO.
14
OF
18



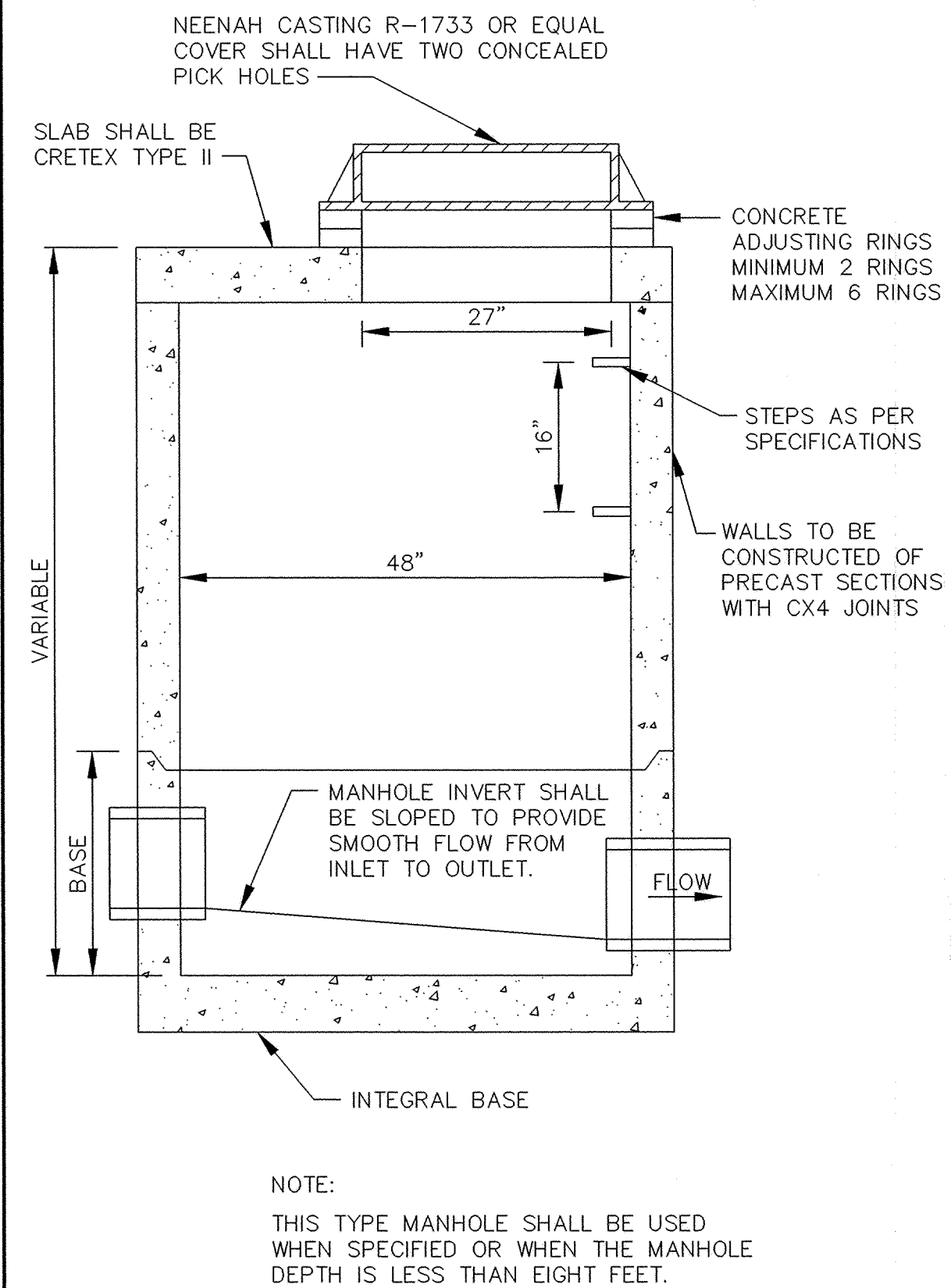
STANDARD AIR RELIEF MANHOLE



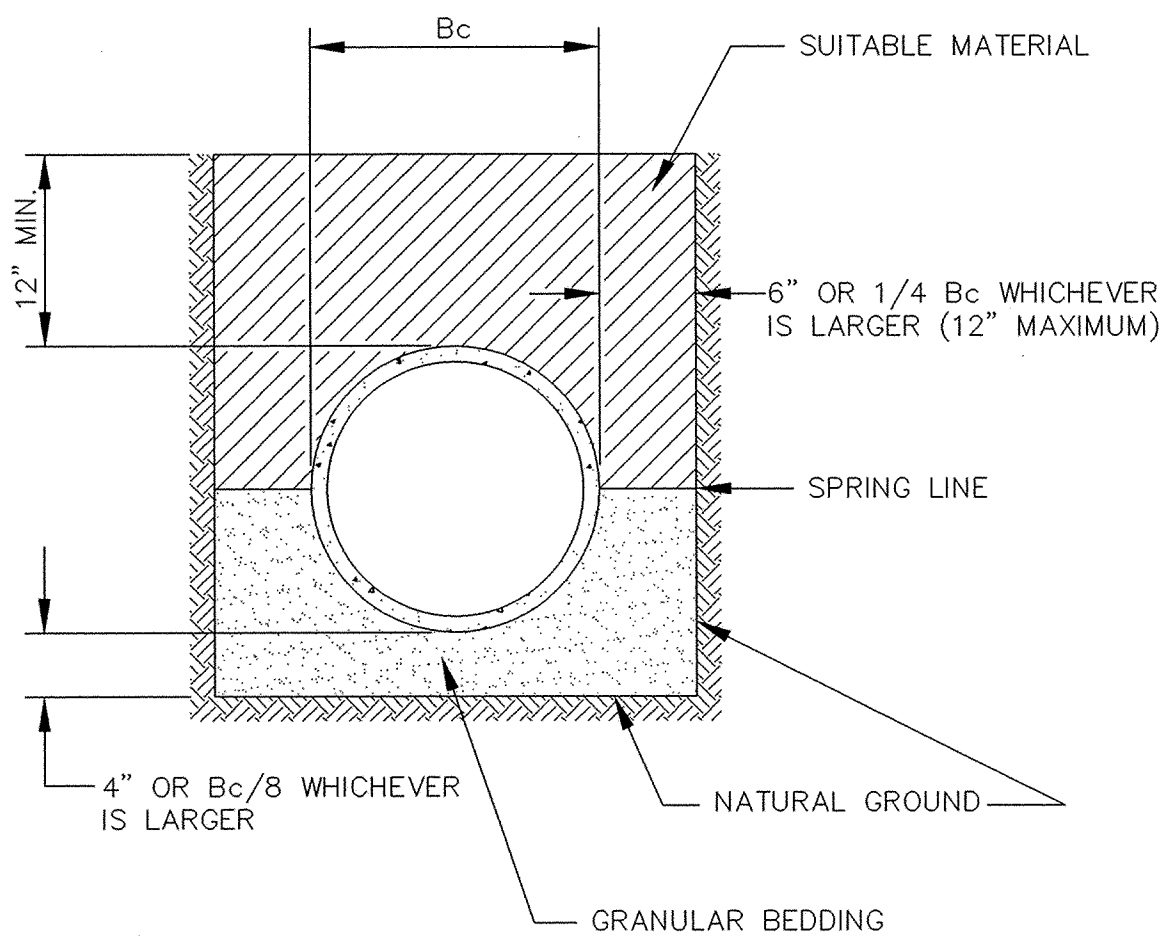
OUTSIDE DROP MANHOLE



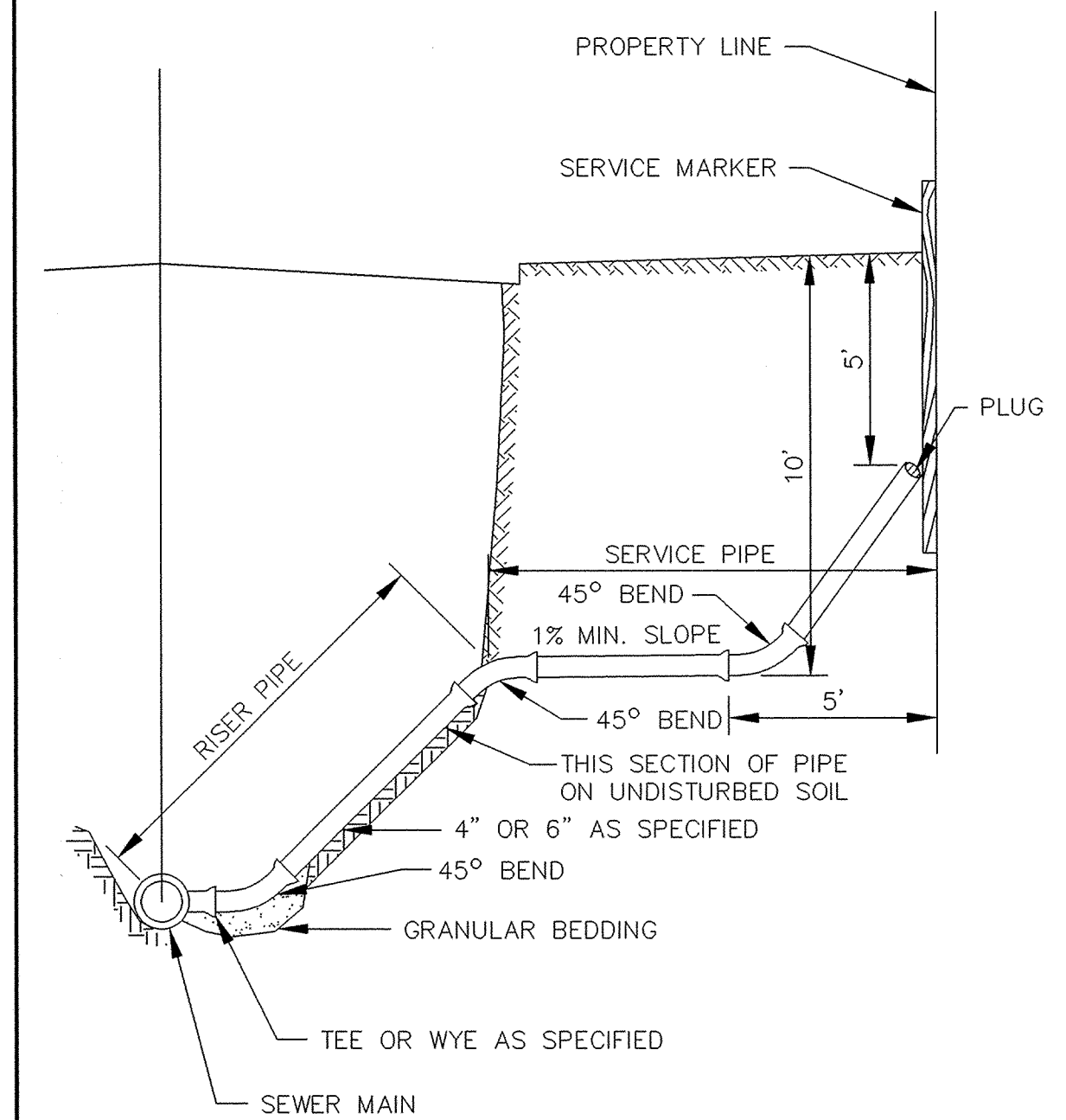
INSIDE DROP MANHOLE (TWO FEET OR LESS)



SLAB TOP MANHOLE

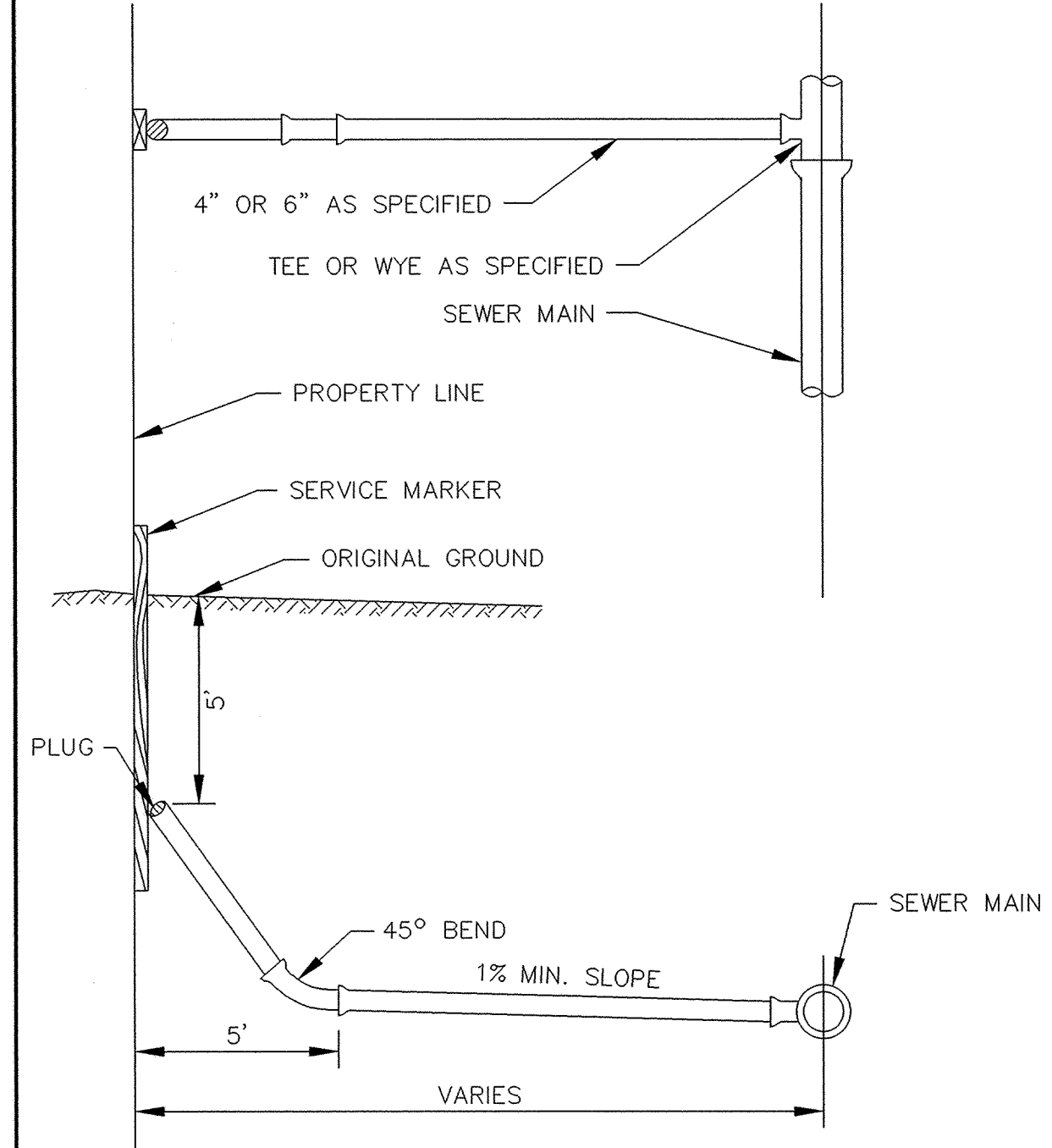


CLASS B PIPE BEDDING

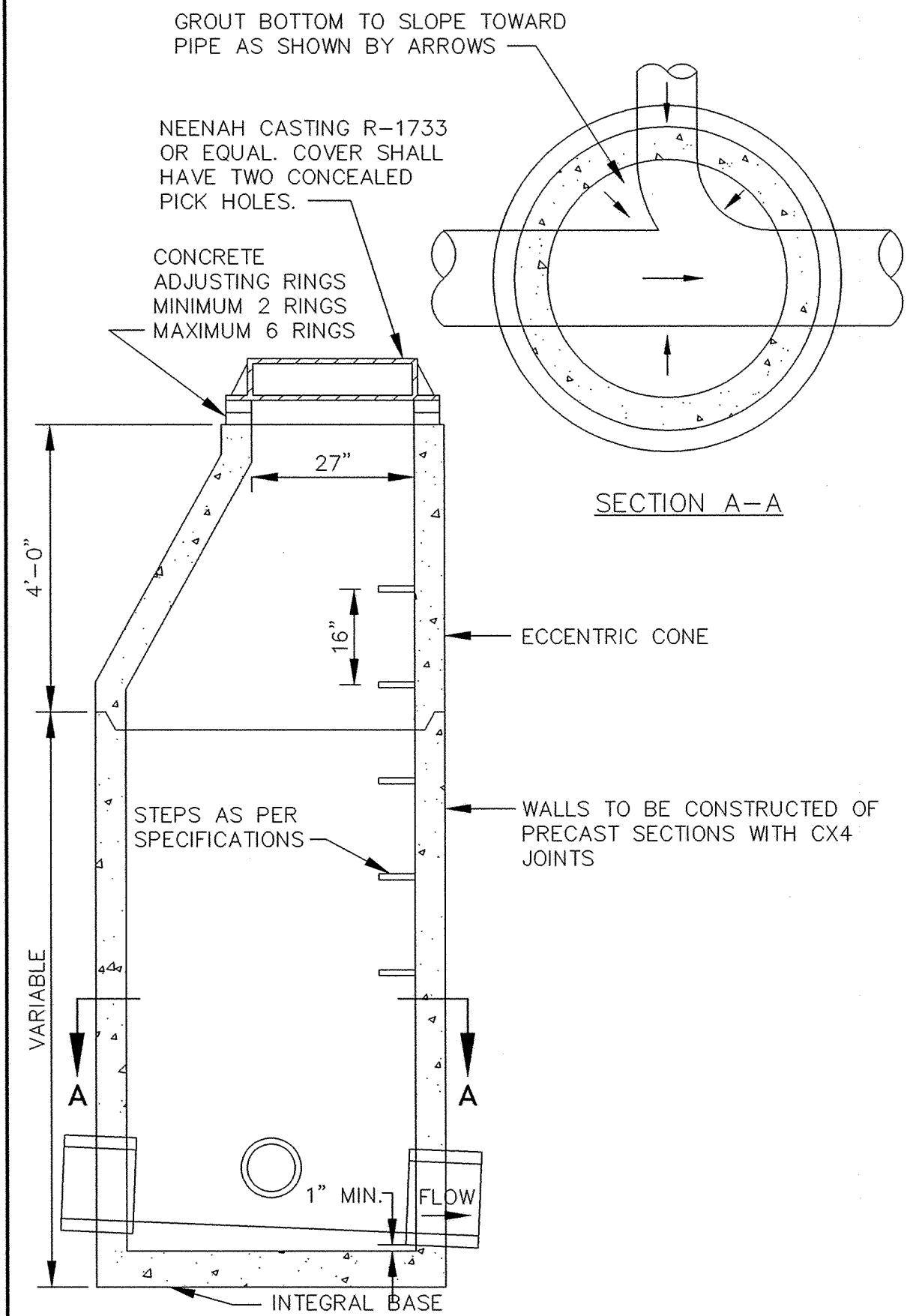


TO BE USED AS SERVICE CONNECTIONS ON DEEP LINES

SERVICE RISER SECTION



TYPICAL HOUSE SERVICE



STANDARD MANHOLE