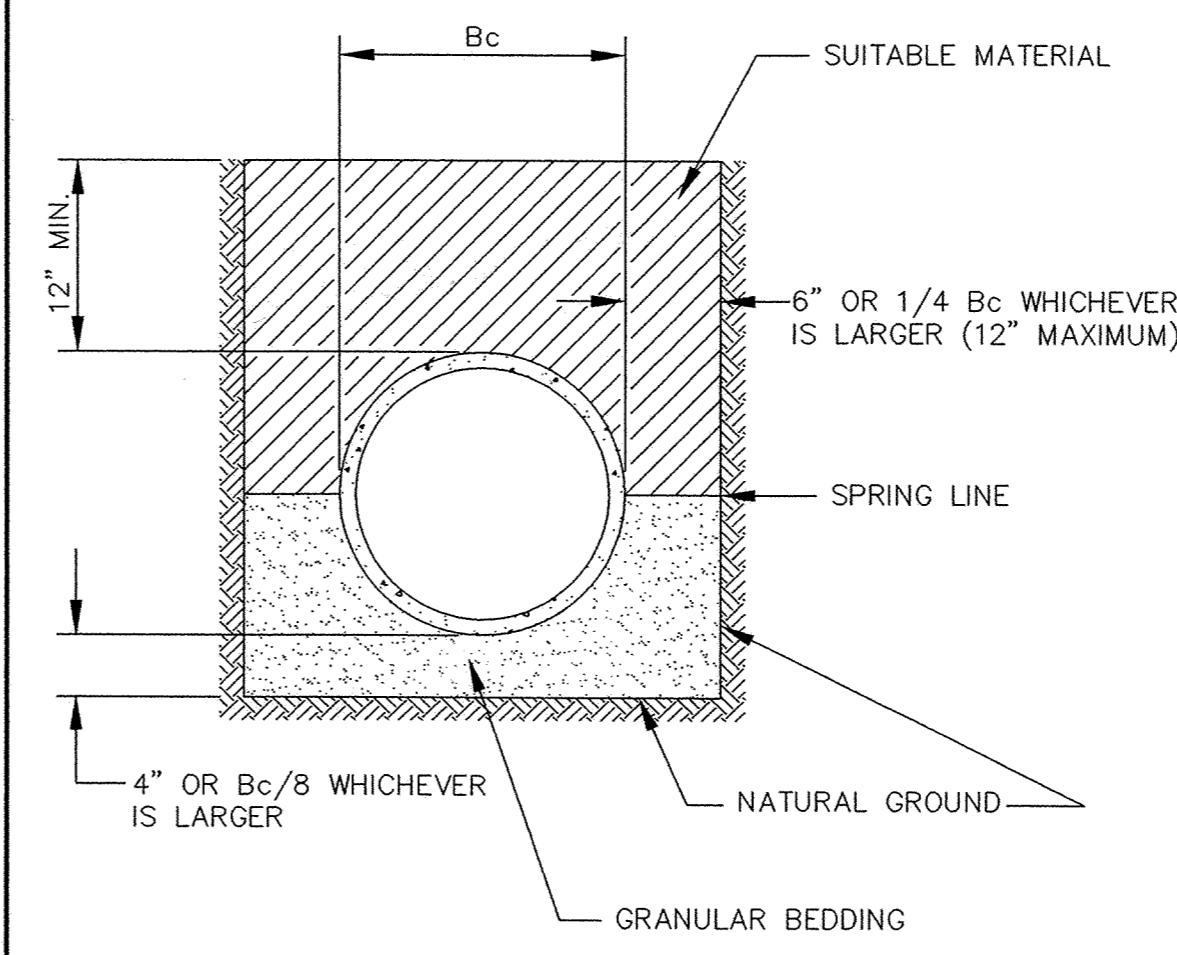
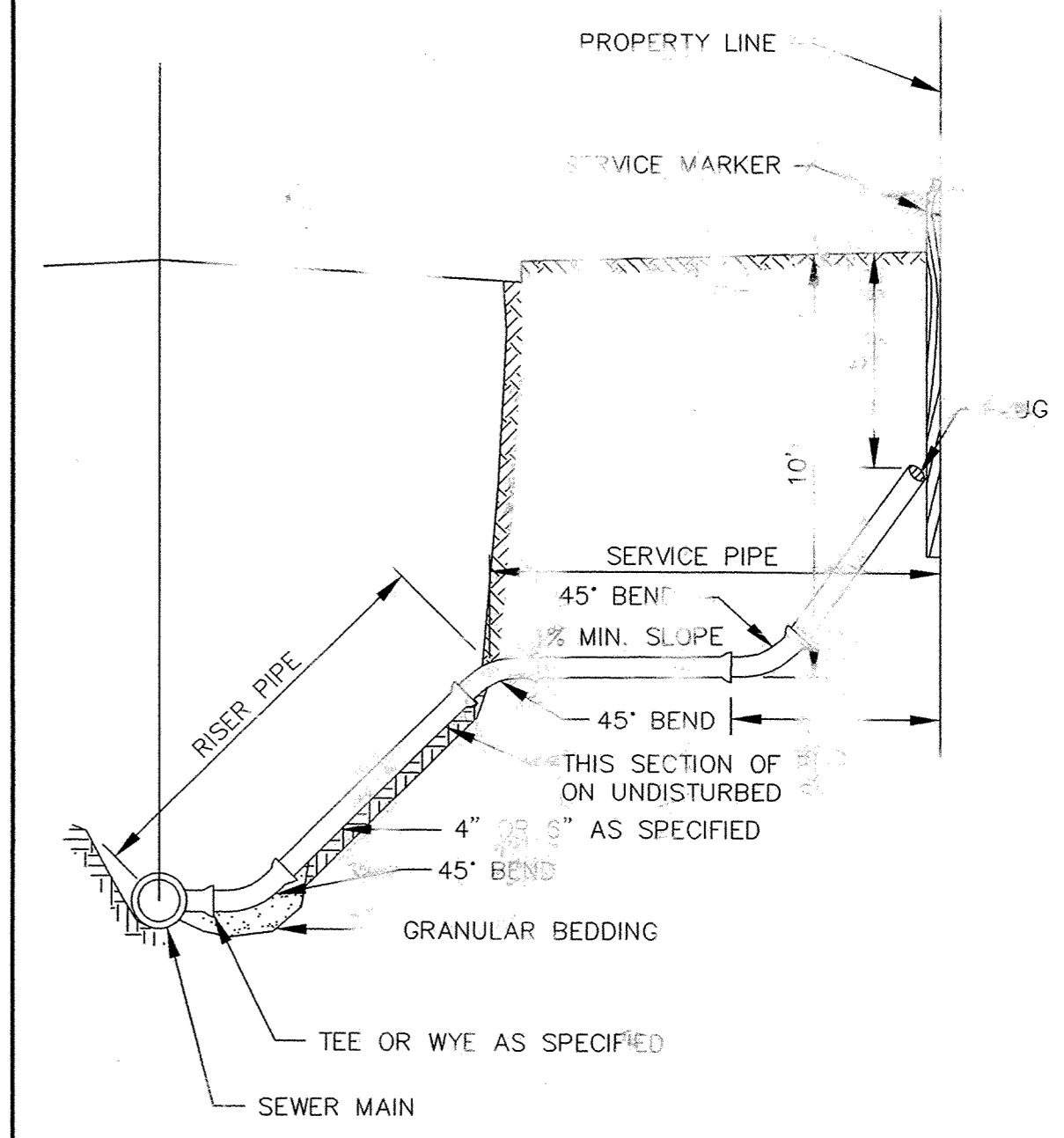


P:\20041210\dwg\20041210DEF1.dwg 5/4/2006 6:39:56 PM CDT



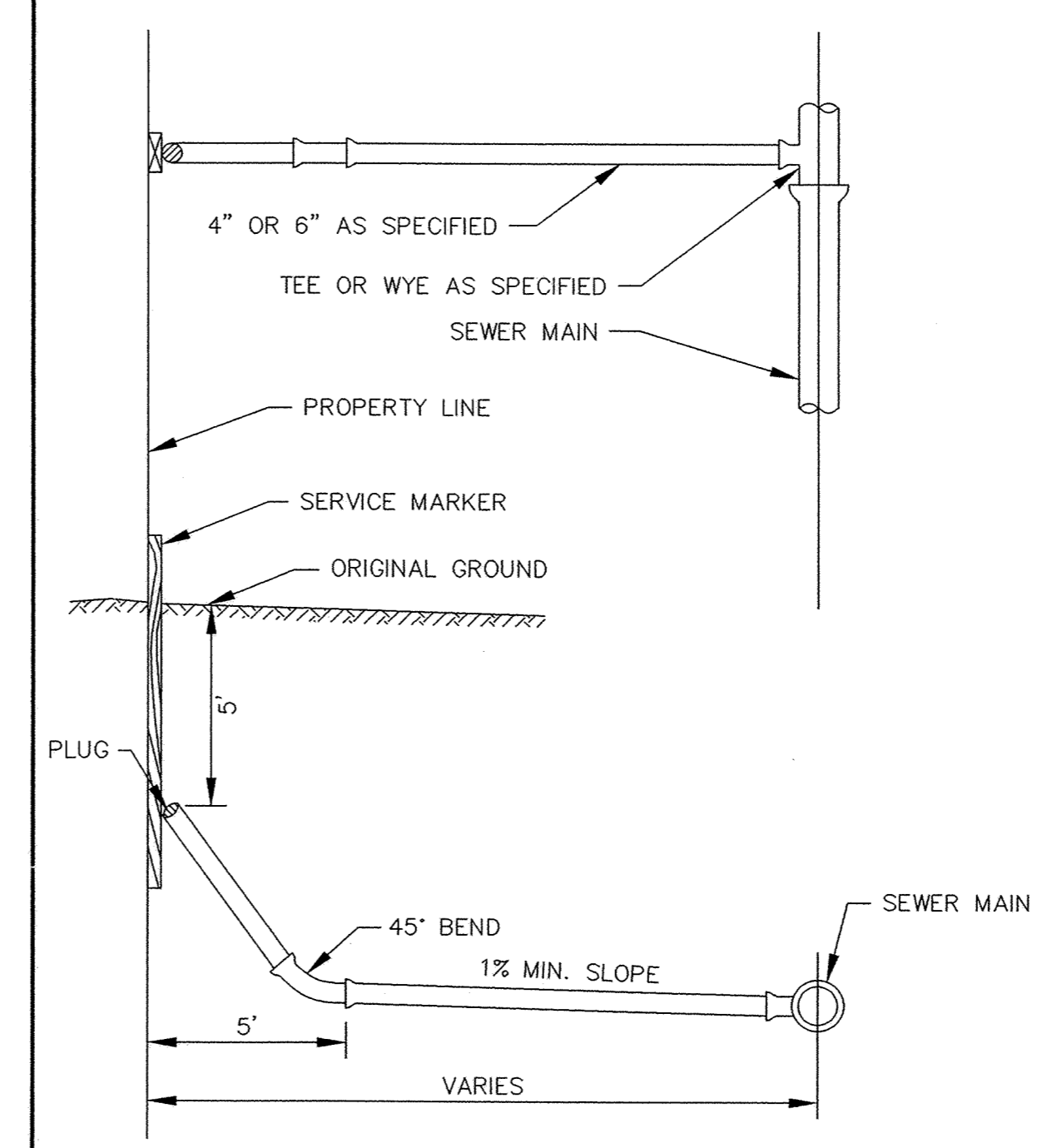
NOTE: ALL COSTS OF EXCAVATION BELOW GRADE AND PLACEMENT OF GRANULAR BEDDING SHALL BE INCLUDED IN THE BID PRICES FOR PIPE ITEMS.

CLASS B PIPE BEDDING

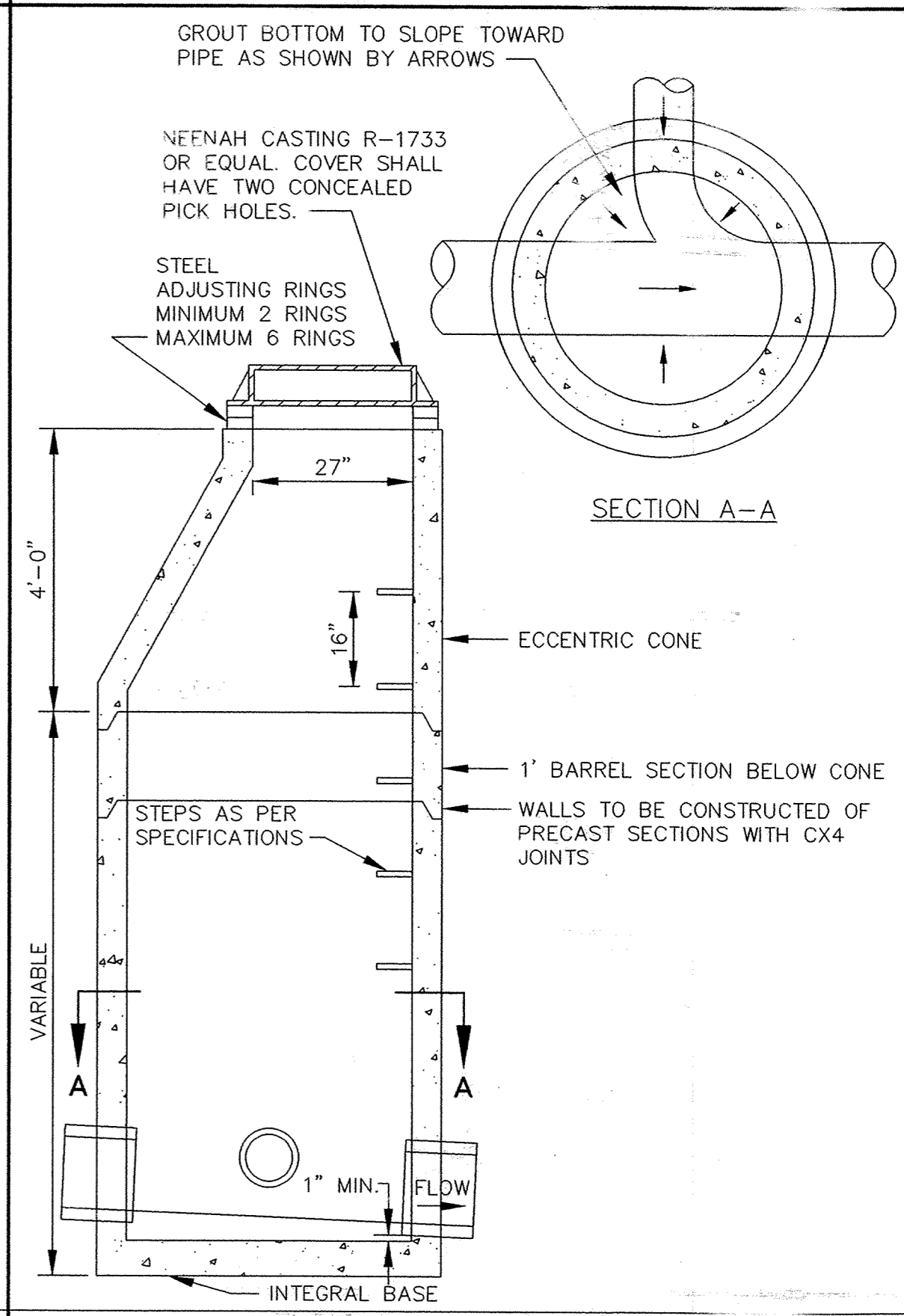


TO BE USED AS SERVICE CONNECTIONS ON DEEP LINES

SERVICE RISER SECTION



TYPICAL HOUSE SERVICE



STANDARD MANHOLE

CONTRACTOR: Hennen Construction Co.
14520 Main Street
Rogers, MN 55374
763-428-4177

RECORD DRAWING
CONFORMING TO CONSTRUCTION RECORDS.
BY Zak Spong DATE 04/25/07
WESTWOOD PROFESSIONAL SERVICES

Westwood Professional Services, Inc.
7599 Anagram Drive
Eden Prairie, MN 55344
Phone: 952/937-5150 Fax: 952/937-5822

PREPARED FOR:
D.R. Horton, Inc.
20860 Kenbridge Court, Suite 100
Lakeville, MN 55044

Howard R. Green Company
CONSULTING ENGINEERS
1326 ENERGY PARK DRIVE
ST. PAUL, MINNESOTA 55108
(612) 644-4389

DESIGNED BY: --- DRAWN BY: ---
APPROVED: --- JOB NUMBER: ---
CAD DATE: April 14, 1999 11:14:59 a.m.
CAD FILE: 230000m\ER-Sw.DWG

I HEREBY CERTIFY THAT THIS PLAN, SPECIFICATION, OR REPORT WAS PREPARED BY ME OR UNDER MY DIRECT SUPERVISION AND THAT I AM A DULY REGISTERED PROFESSIONAL ENGINEER UNDER THE LAWS OF THE STATE OF MINNESOTA.
DATE: _____ REG. NO.: _____

NO.	DATE	BY	REVISION DESCRIPTION

CITY OF ELK RIVER
TROTT BROOK FARMS 12TH ADDITION
SANITARY SEWER DETAILS

SHEET NO.
7
OF
10