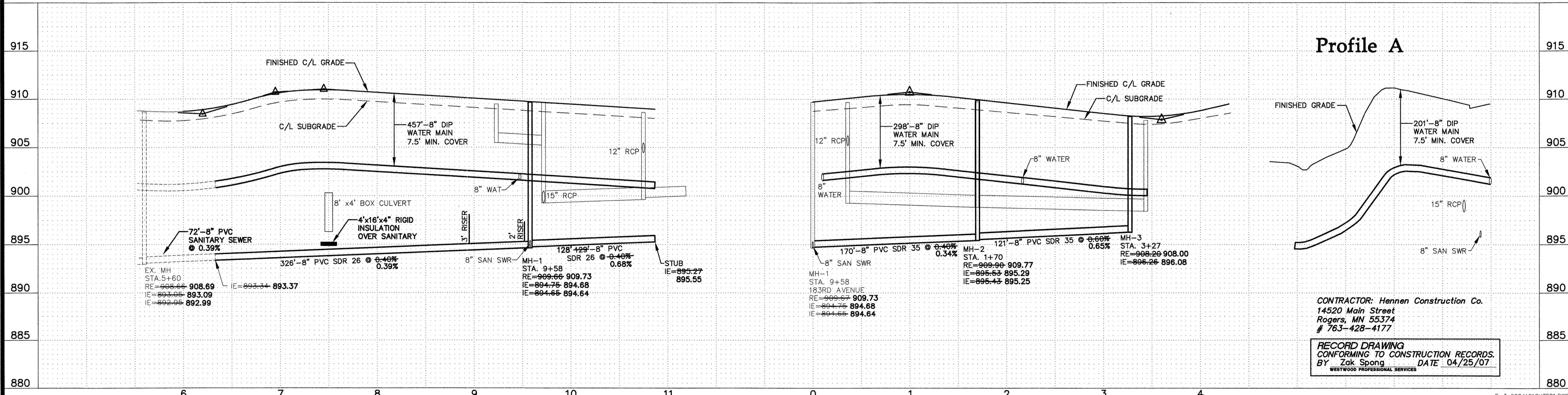
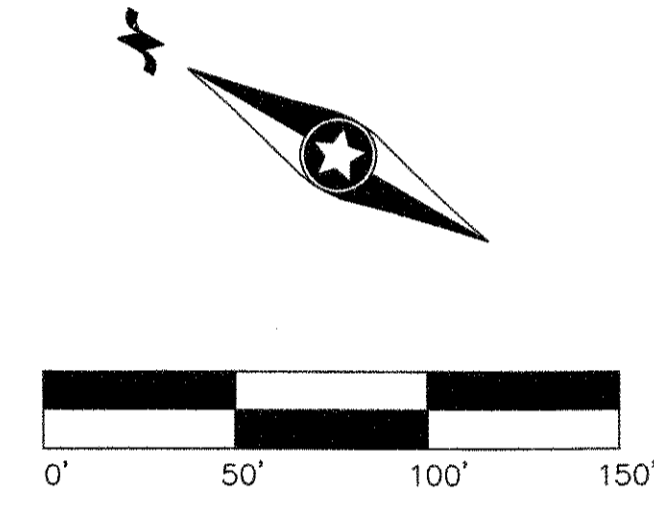


- GENERAL NOTES:**
- (XXX.X) DENOTES SANITARY SEWER SERVICE INVERT @ END OF FUTURE SERVICE STUB
 - WYE=X+XX DENOTES SANITARY SEWER SERVICE WYE LOCATED ON MAINLINE FROM DOWN STREAM M.H.
 - FLAG HYDRANTS.
 - HYDRANTS TO BE PLACED 5' BEHIND BACK OF CURB.
 - EXTEND RODS ON DEEP VALVES.
 - ALL DROP MANHOLES WITH DROPS OVER 2' TO BE CONSTRUCTED USING OUTSIDE DROPS.
 - SANITARY SEWER & WATER SERVICES TO BE EXTENDED 10' PAST BOC ON ALL LOTS
 - (A) INSTALL WATER SERVICES OVER STORM SEWER, MAINTAIN 18" VERTICAL SEPARATION.



CONTRACTOR: Hennen Construction Co.
 14520 Main Street
 Rogers, MN 55374
 # 763-428-4177

RECORD DRAWING
 CONFORMING TO CONSTRUCTION RECORDS.
 BY Zak Spong DATE 04/25/07
 WESTWOOD PROFESSIONAL SERVICES

P:\2004\1210\DWG\20041210\TFF01.dwg 3/5/2007 2:25:40 PM CST

Westwood Professional Services, Inc.
 7599 Anagram Drive
 Eden Prairie, MN 55344
 Phone: 952-937-5150 Fax: 952-937-5822

I hereby certify that this plan was prepared by me or under my direct supervision and that I am a duly licensed PROFESSIONAL ENGINEER under the laws of the State of Minnesota.

Jason M. McCarty
Jason M. McCarty
 Date: 04/25/07 License No. 41955

Revisions:

04/14/06	REVISED GRADING CHANGES (CLJ)
04/21/06	CLIENT REVIEW (HW)
05/04/06	CLIENT REVIEW (HW)
05/18/06	LOT 8/9 LINE ADJUSTMENT (HW)
07/05/06	CITY COMMENTS (CLJ/HW)
03/05/07	RECORD DRAWING (HW)
04/25/07	FINAL RECORD DRAWING (SWW)

Designed: JMD
Checked: CLJ
Drawn: HW
Record Drawing by/date:

Prepared for:
D.R. Horton, Inc.
 20860 Kenbridge Court, Suite 100
 Lakeville, Minnesota 55044

Trott Brook Farms
12th Addition
 Elk River, Minnesota

Sanitary Sewer and Water Main Construction Plans
 183rd Avenue & Monroe Court

Date: 02/14/06 Sheet: 3 OF 10
 Latest Revision Date: 04/25/07