

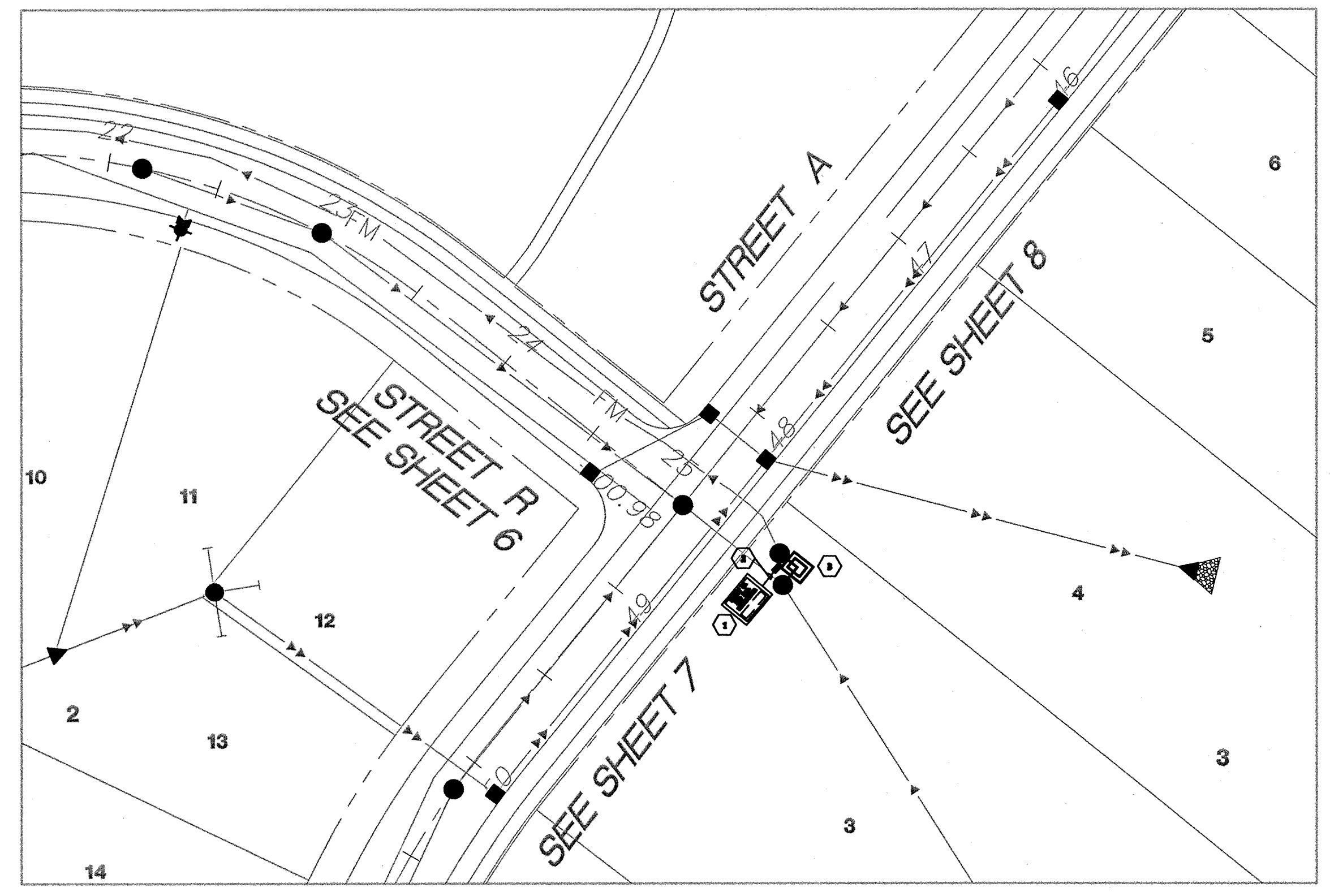
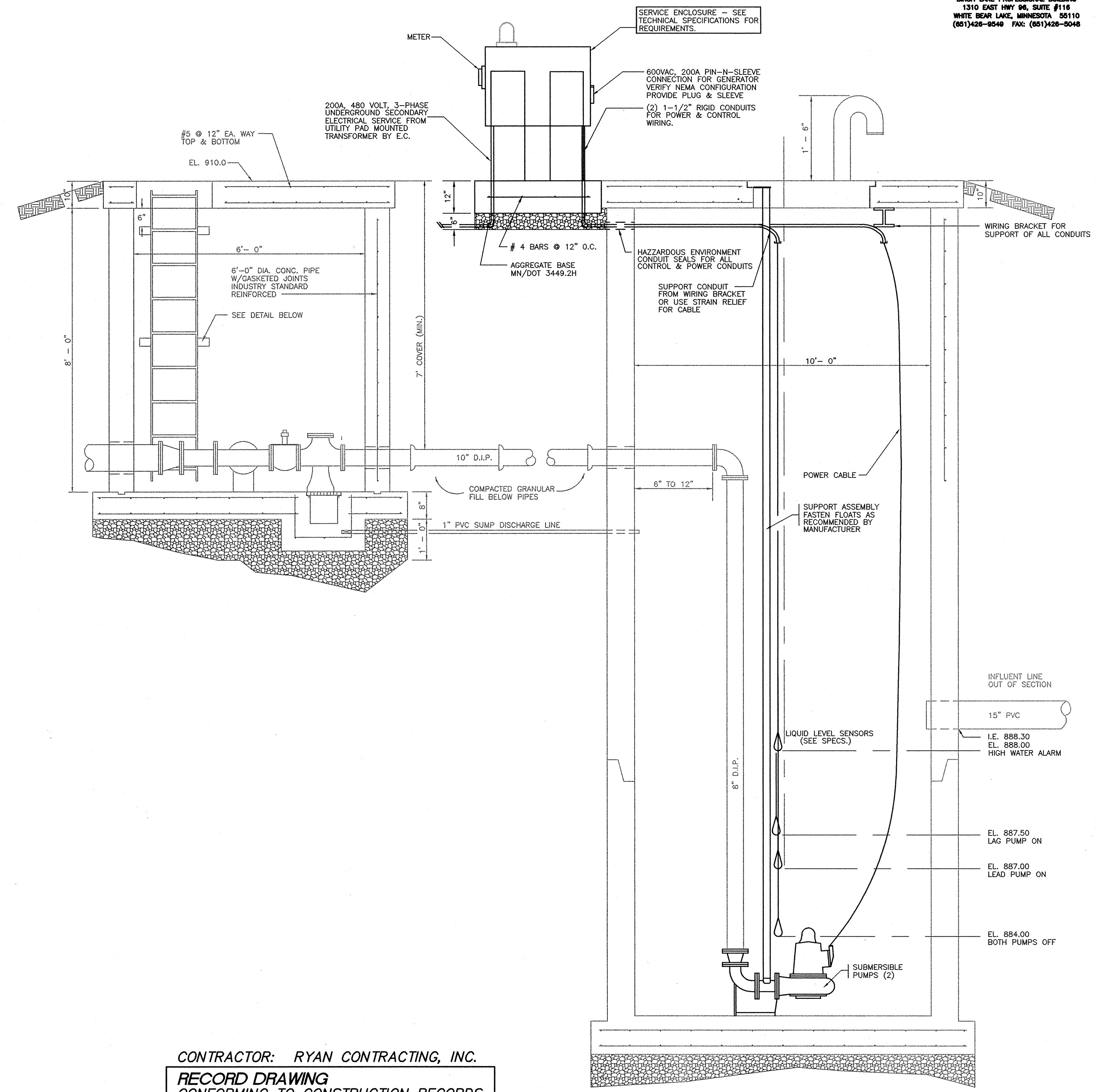
CAIN OUSE ASSOCIATES
 CONSULTING ENGINEERS
 BRCH LAKE PROFESSIONAL BUILDING
 1510 EAST HWY 26, SUITE #118
 WHITE BEAR LAKE, MINNESOTA 55110
 (651)428-9540 FAX: (651)428-5048

GENERAL NOTES:

- A. COORDINATE EXACT LOCATION OF PAD MOUNTED TRANSFORMER WITH THE UTILITY PRIOR TO CONSTRUCTION. SERVICE POINT LOCATIONS SHOWN ON THESE DRAWINGS ARE NOT EXACT AND MUST BE FIELD COORDINATED.
- B. REFER TO THE TECHNICAL SPECIFICATIONS FOR ELECTRICAL CONNECTION REQUIREMENTS FOR THE LIFT STATION.
- C. ELECTRICAL CONNECTIONS AT SERVICE ENCLOSURE MAY VARY WITH SUPPLIER. ELECTRICAL CONTRACTOR SHALL VERIFY ALL REQUIREMENTS WITH PRIME CONTRACTOR TO INSURE A COMPLETE AND OPERABLE SYSTEM.
- D. REFER TO CIVIL DRAWINGS FOR EXACT REQUIREMENTS AND LOCATION OF SERVICE ENCLOSURE WITH RESPECT TO THE WET WELL.
- E. PROVIDE A SOLID STATE REDUCED VOLTAGE MOTOR CONTROLLER "SOFT START" FOR ALL PUMPS.

ELECTRICAL PLAN NOTES:

- ① LOCATION OF UTILITY PAD MOUNTED TRANSFORMER.
- ② UNDERGROUND SECONDARY SERVICE BY THE ELECTRICAL CONTRACTOR.
- ③ LOCATION OF ELECTRICAL SERVICE ENCLOSURE.



PLAN VIEW
 NOT TO SCALE

CONTRACTOR: RYAN CONTRACTING, INC.
RECORD DRAWING
 CONFORMING TO CONSTRUCTION RECORDS.
 BY S. HUTTNER DATE 7/20/01
 WESTWOOD PROFESSIONAL SERVICES

SECTION - WET WELL ELECTRICAL DETAIL
 NOT TO SCALE

P:\065671\DWG\BUILT\0367E81.dwg 01/26/2000 09:30:54 AM CST

REVISIONS

Westwood
 Westwood Professional Services, Inc.
 14180 West Trunk Hwy. 5
 Eden Prairie, MN 55344
 612 937-5150

I hereby certify that this plan was prepared by me or under my direct supervision and that I am a duly registered PROFESSIONAL ENGINEER under the laws of the State of Minnesota.
 DATE 05/19/99 REG. NO. 12637

DESIGNED	JSH	CHECKED	JJC
DRAWN	JSH	RECORD DRAWING BY/DATE	

PREPARED FOR:
Contractor Property Developers Company
 Brooklyn Park, Minnesota

Trott Brook Farms
 Elk River, Minnesota

LIFT STATION

DATE **6-1-99**
 SHEET **27 OF 32**

DRAWING NUMBER
 TROTT-4.99
 SHEET 27 OF 32