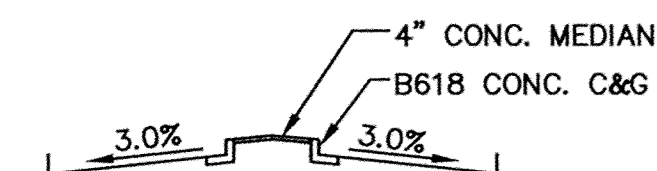


GENERAL NOTES:

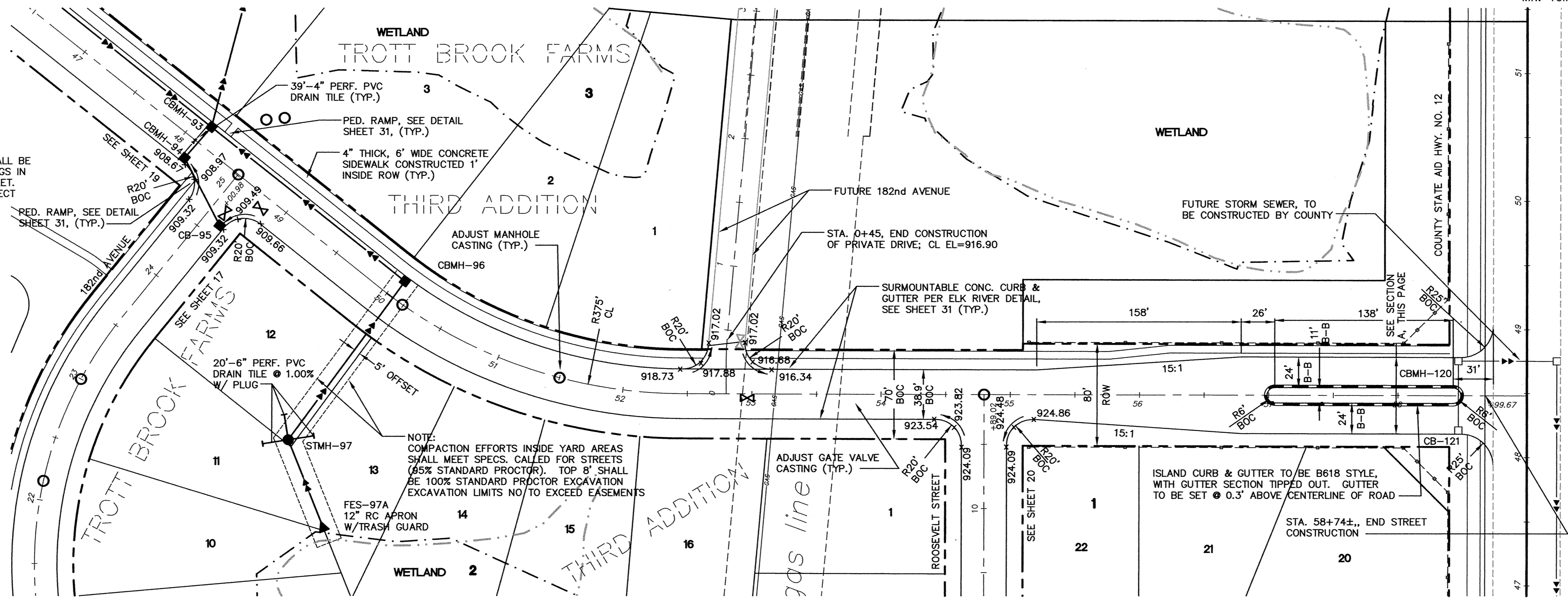
- RADIUS TO BE B618 C. & G. AS PER CITY DETAIL (TYP.)
- 85.90' x DENOTES GUTTERLINE ELEVATION AT INTERSECTIONS
- DENOTES OUTPUT CURB & GUTTER
- ALL RCP SHALL BE CLASS 4, UNLESS OTHERWISE NOTED

CASTING NOTE:

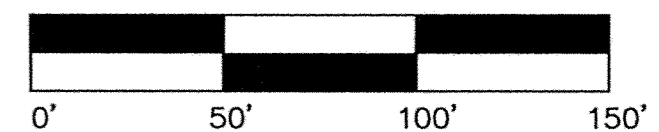
ALL CATCH BASIN CASTINGS IN CURB SHALL BE SUMPED 0.15 FEET AND MANHOLE CASTINGS IN PAVED AREAS SHALL BE SUMPED 0.05 FEET. RIM ELEVATIONS ON PLAN PROFILES REFLECT THE SUMPED ELEVATIONS.



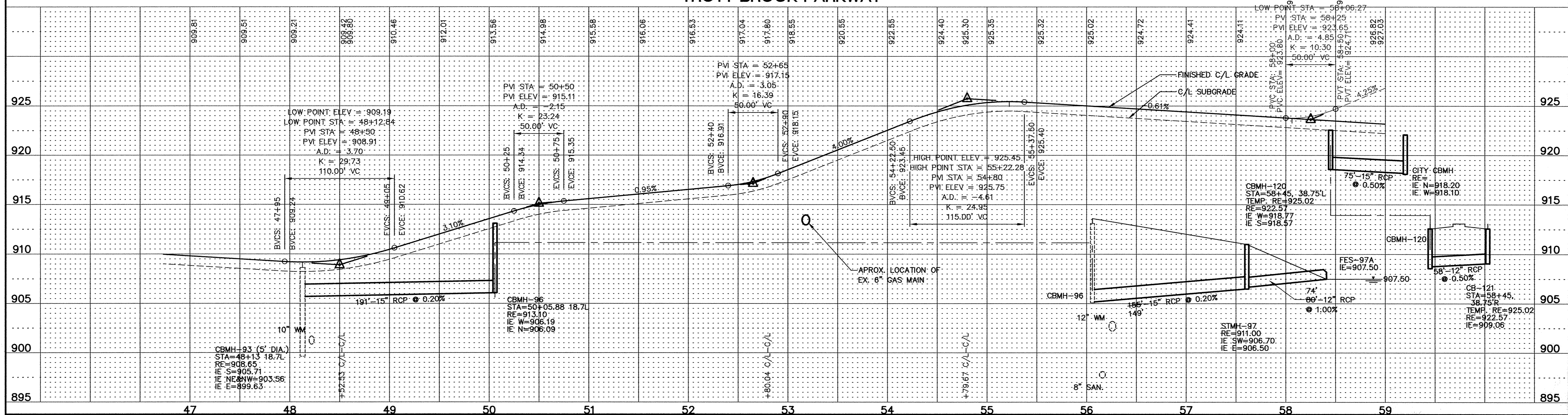
SECTION "A"



CONTRACTOR: RYAN CONTRACTING, INC.
 RECORD DRAWING
 CONFORMING TO CONSTRUCTION RECORDS.
 BY S. HUITNER DATE 7/20/01
 WESTWOOD PROFESSIONAL SERVICES



TROTT BROOK PARKWAY



REVISIONS

6/28/99	
7/23/99	PER CITY REDLINES
7/27/99	PER CITY REDLINES

Westwood
 Westwood Professional Services, Inc.
 7599 Anogram Drive
 Eden Prairie, MN 55344
 912.937-5150

I hereby certify that this plan was prepared by me or under my direct supervision and that I am a duly registered PROFESSIONAL ENGINEER under the laws of the State of Minnesota.
 DATE 7/27/99 REG. NO. 17716

DESIGNED	FDH, II	CHECKED	FDH, II
DRAWN	WH	RECORD DRAWING BY/DATE	

PREPARED FOR:
D.R. Horton, INC.
 3459 Washington Drive
 Suite 204
 Eagan, Minnesota 55122

Trott Brook Farms
 Elk River, Minnesota

Storm Sewer & Street Construction Plan

DATE 6/1/99
 SHEET 18 OF 32

P:\96367\wg\96367S1F5.dwg 09/30/99 07:52:06 AM CDT

DRAWING NUMBER TROTT1-4-99 18
 SAVED PRODUCTS • NEW HOPE, MINNESOTA
 REVISION BY PART NUMBER 0502
 DRAWING NUMBER 18
 SAVED PRODUCTS • NEW HOPE, MINNESOTA
 REVISION BY PART NUMBER 0502
 DRAWING NUMBER 18
 SAVED PRODUCTS • NEW HOPE, MINNESOTA
 REVISION BY PART NUMBER 0502
 DRAWING NUMBER 18