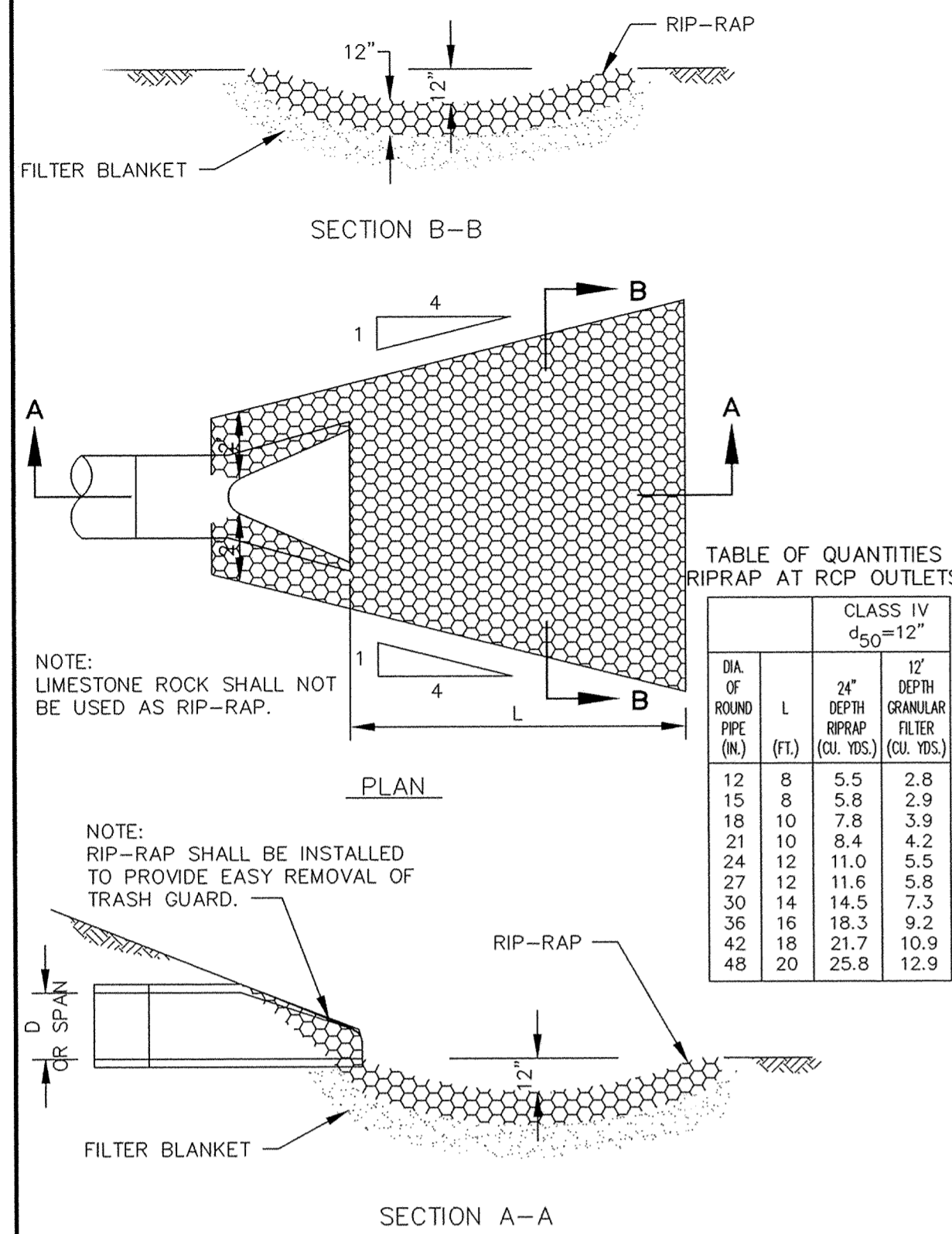
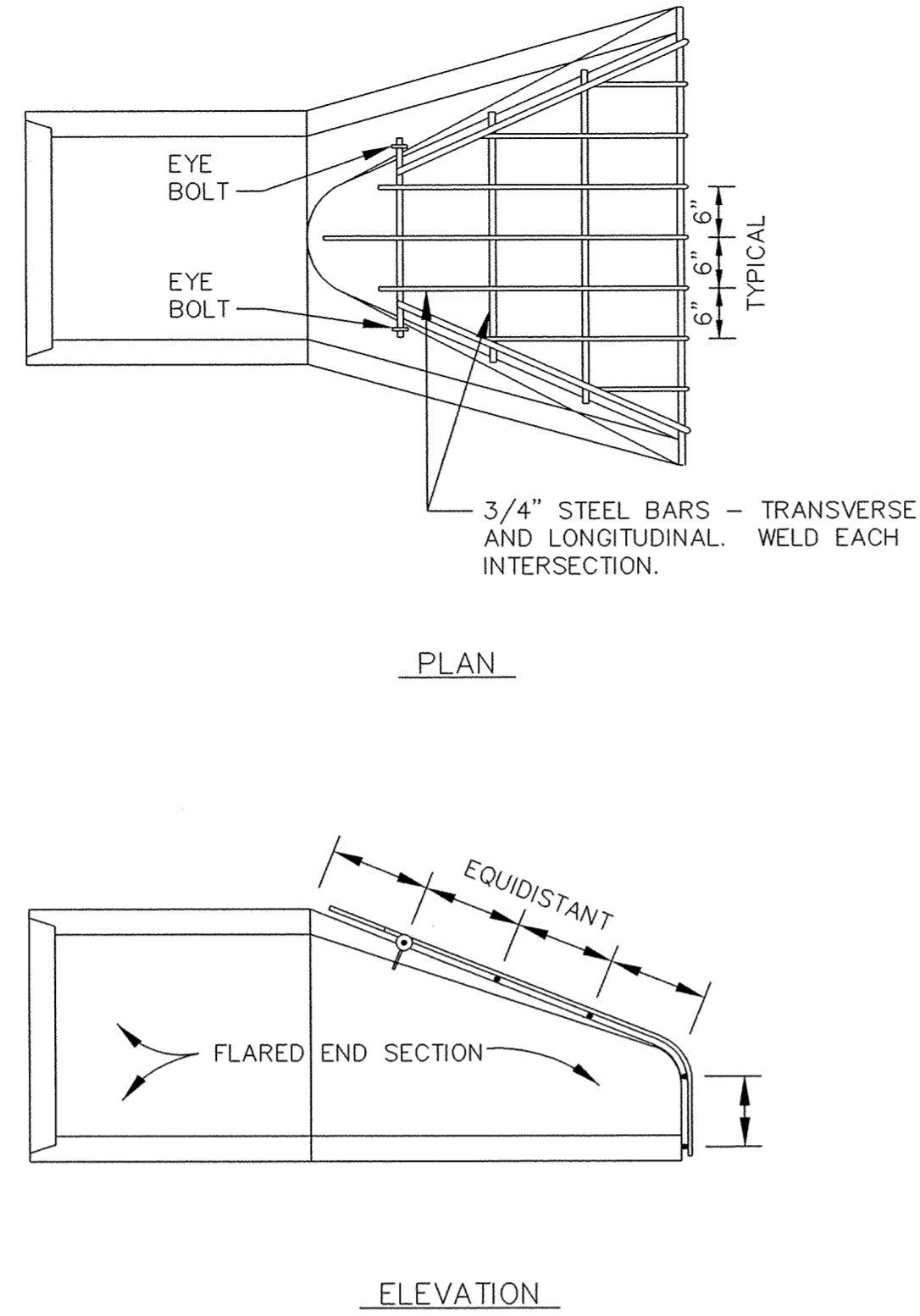


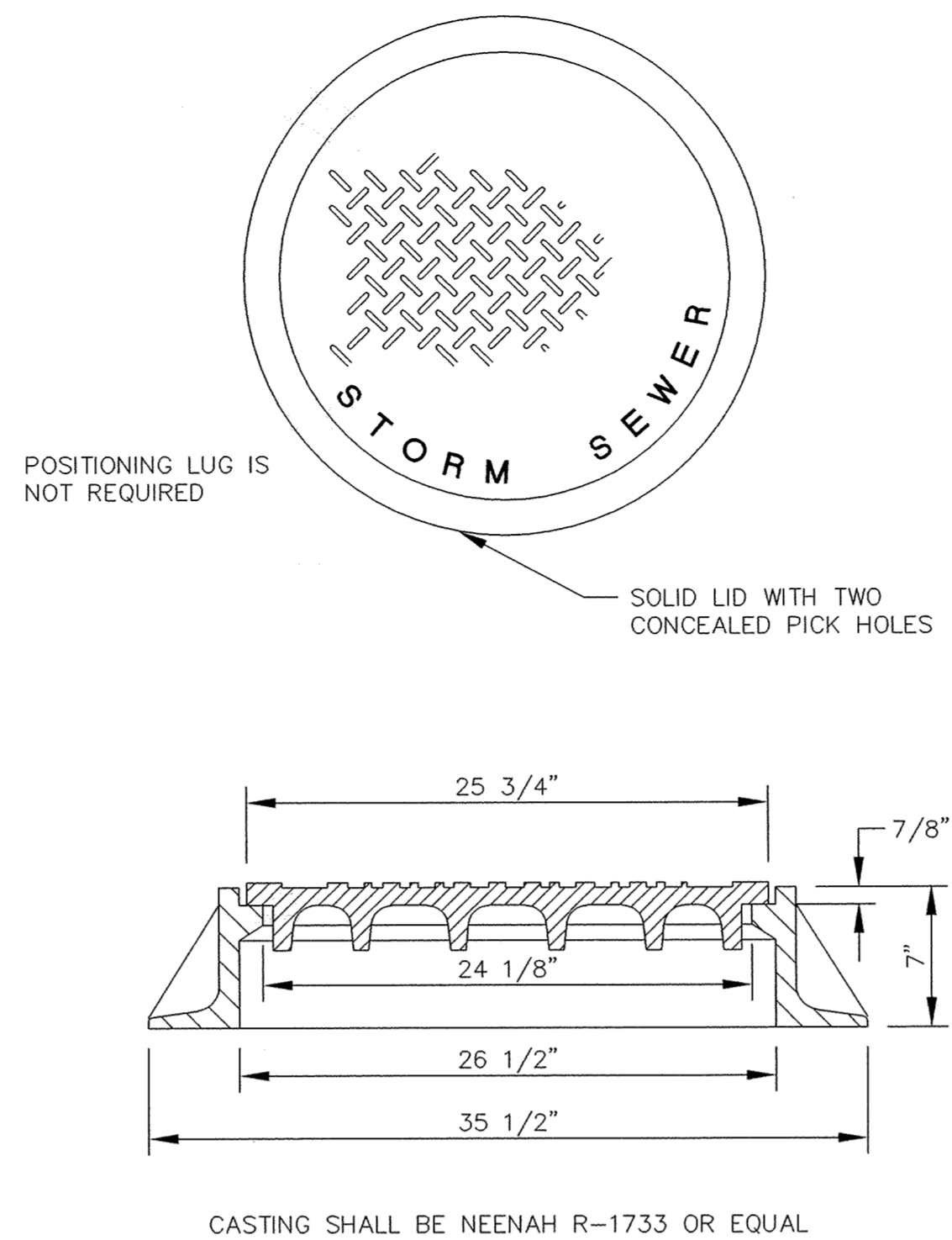
P:\20011011\dwg\RECORD\20011011DE@4.dwg 01/17/2005 10:23:57 AM CST



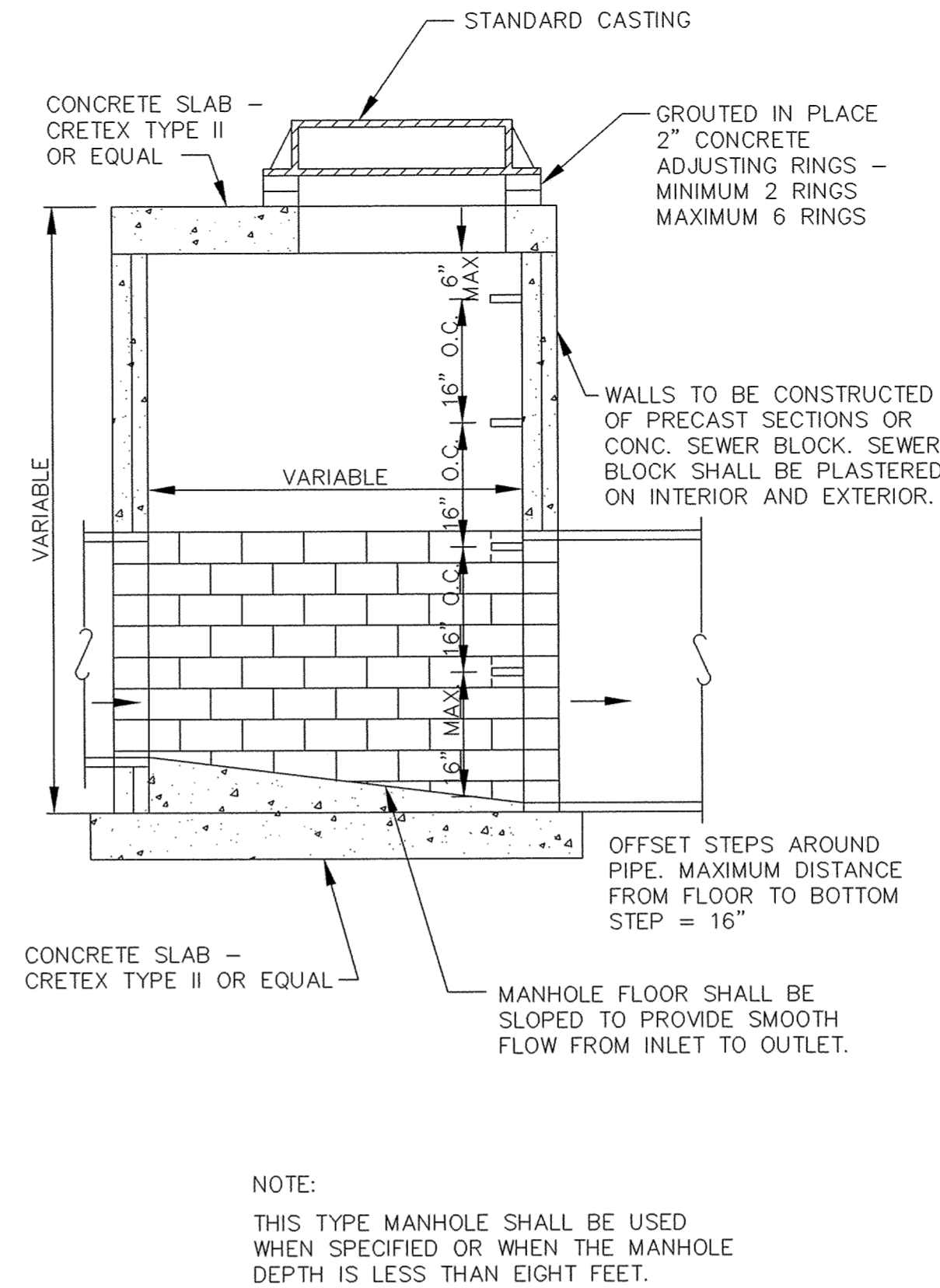
RIP-RAP INSTALLATION



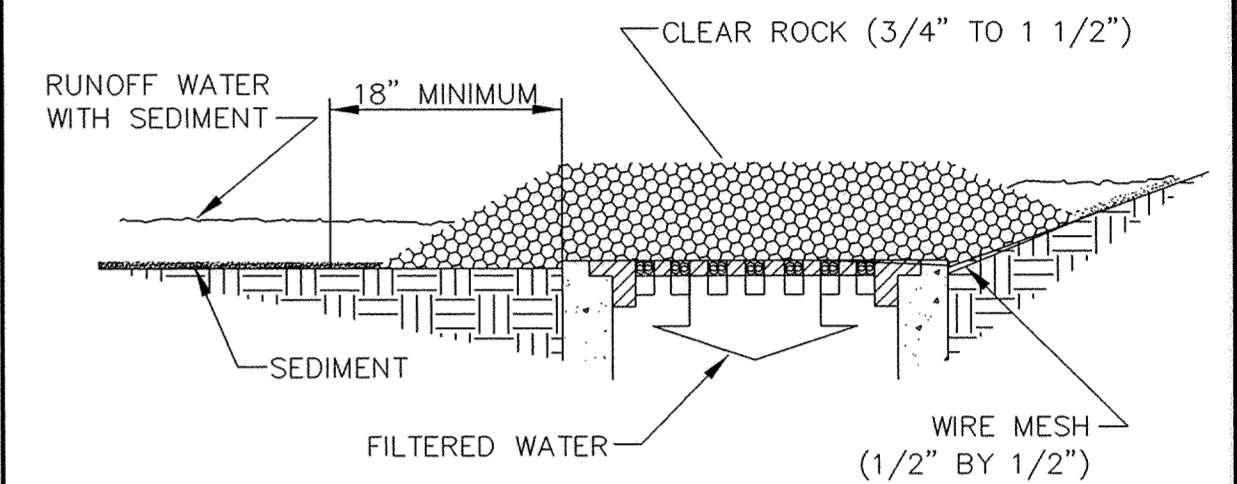
TRASH GUARD



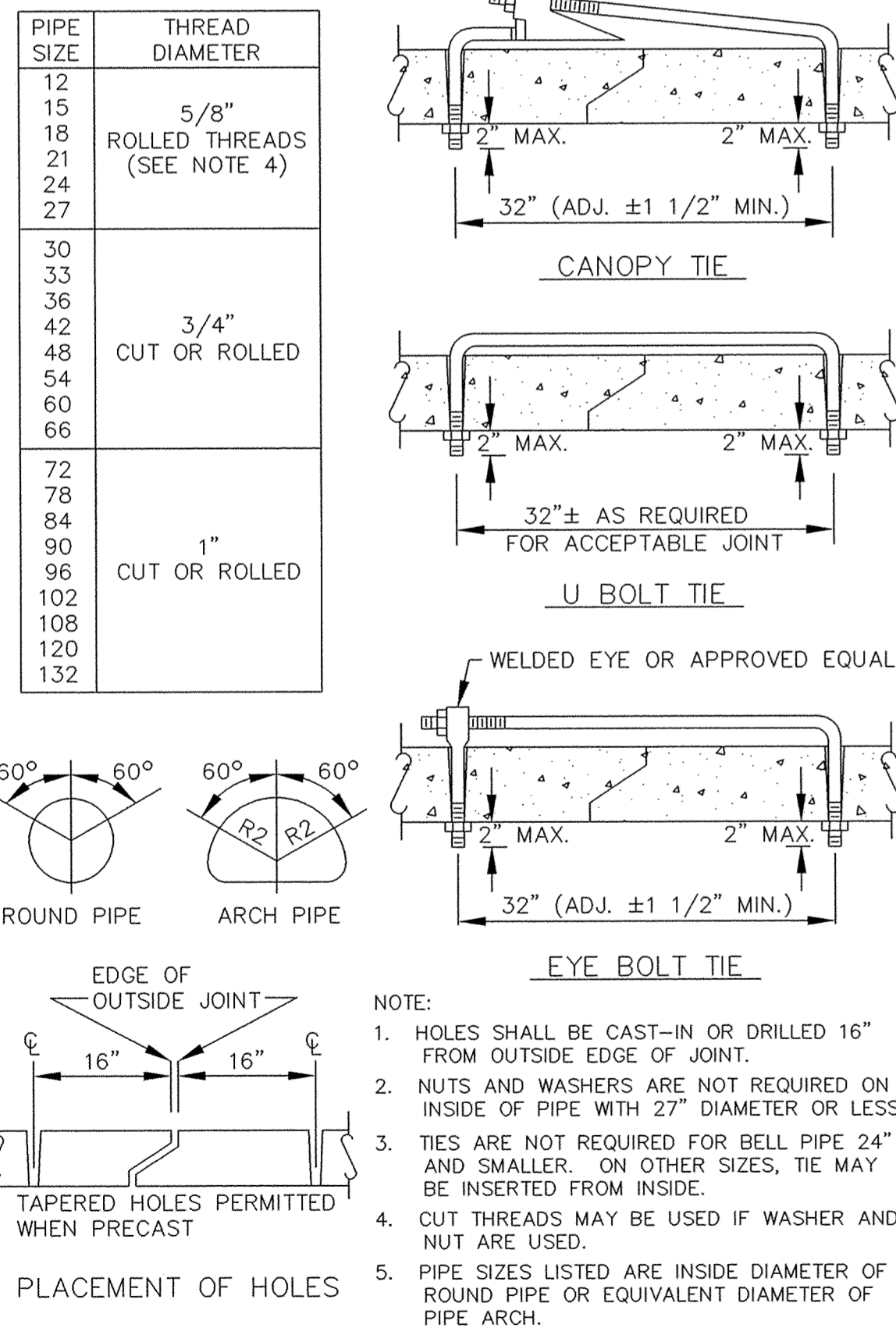
STANDARD MANHOLE CASTING



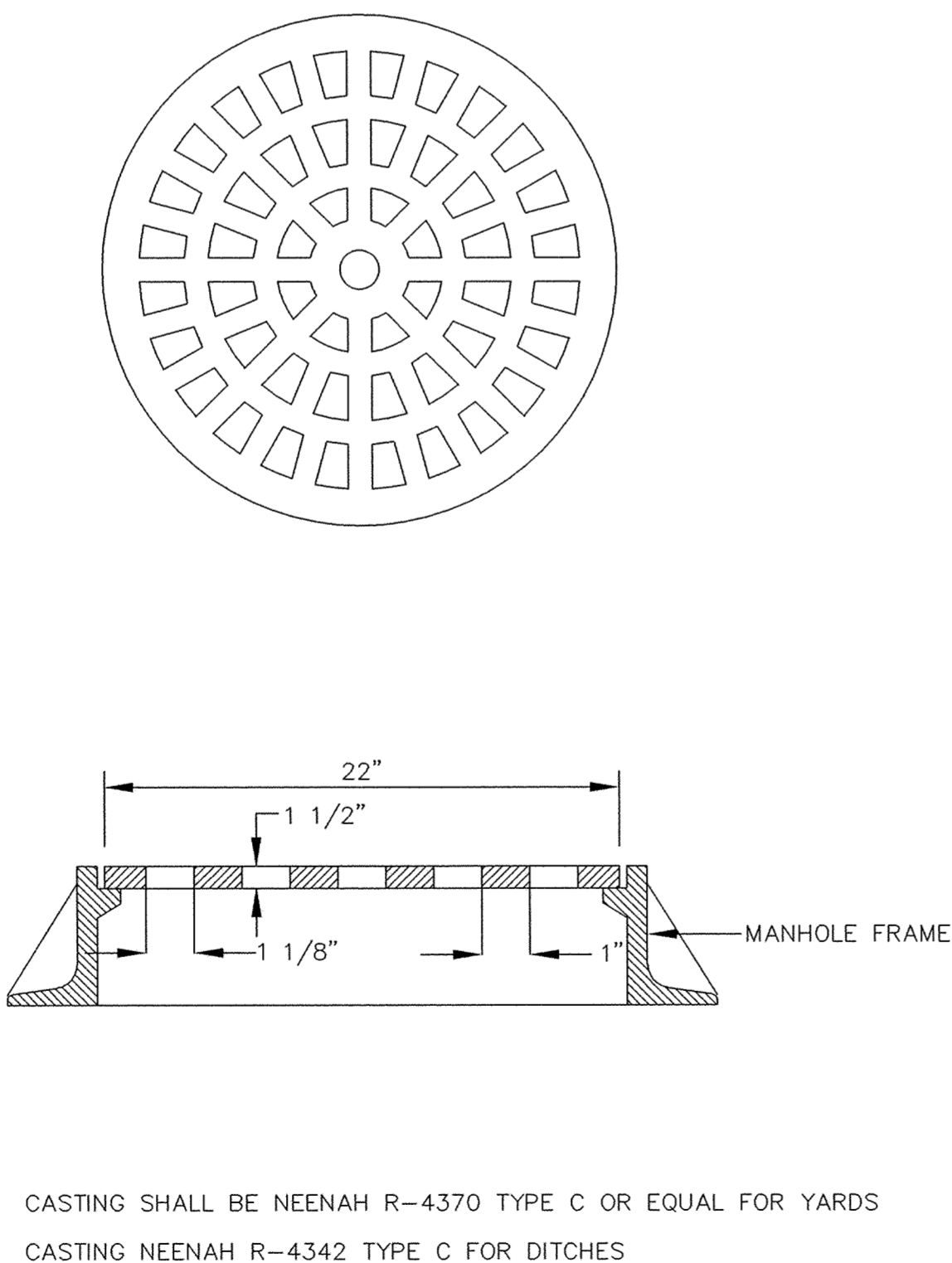
SLAB TOP MANHOLE



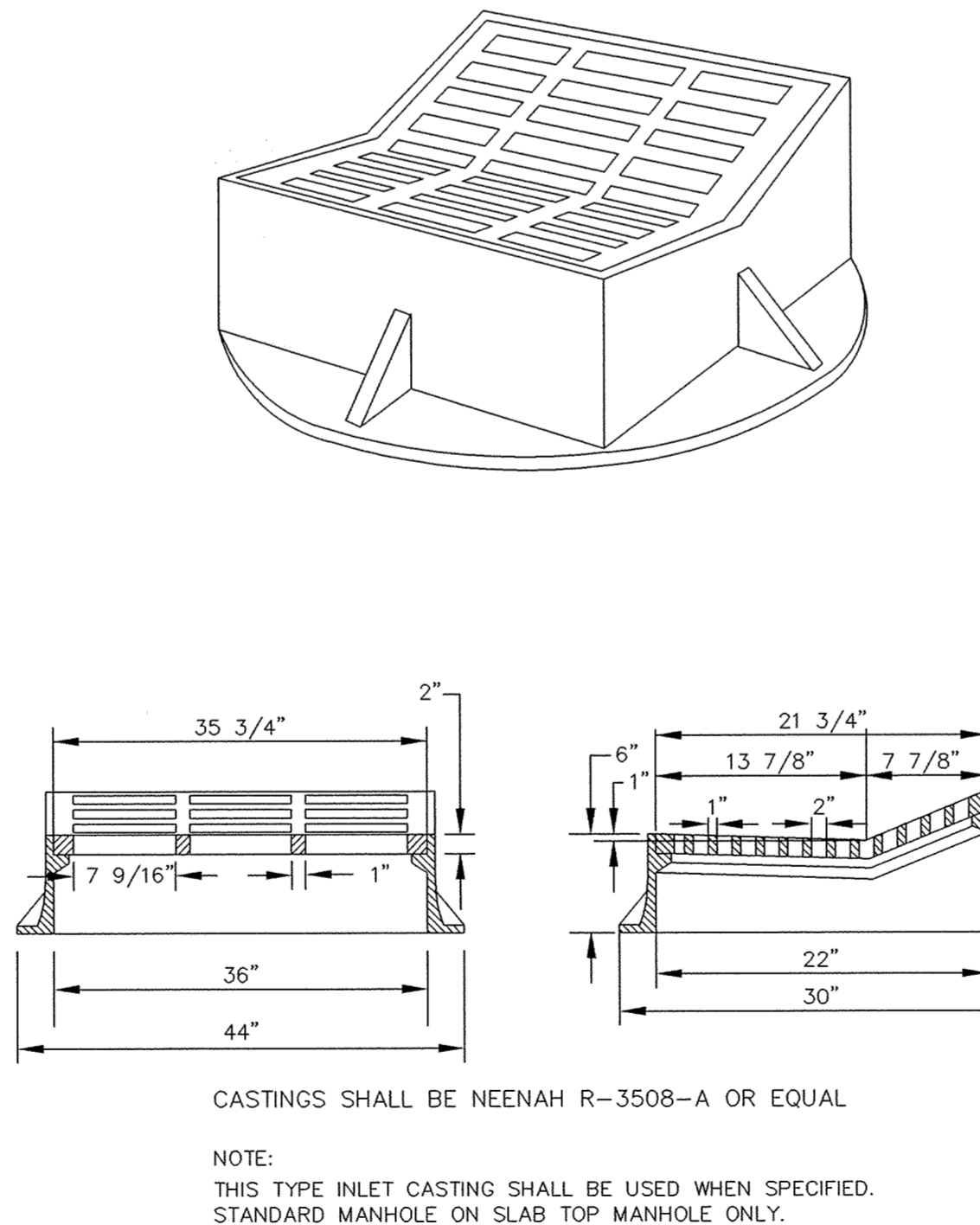
CATCH BASIN SEDIMENTATION BARRIER



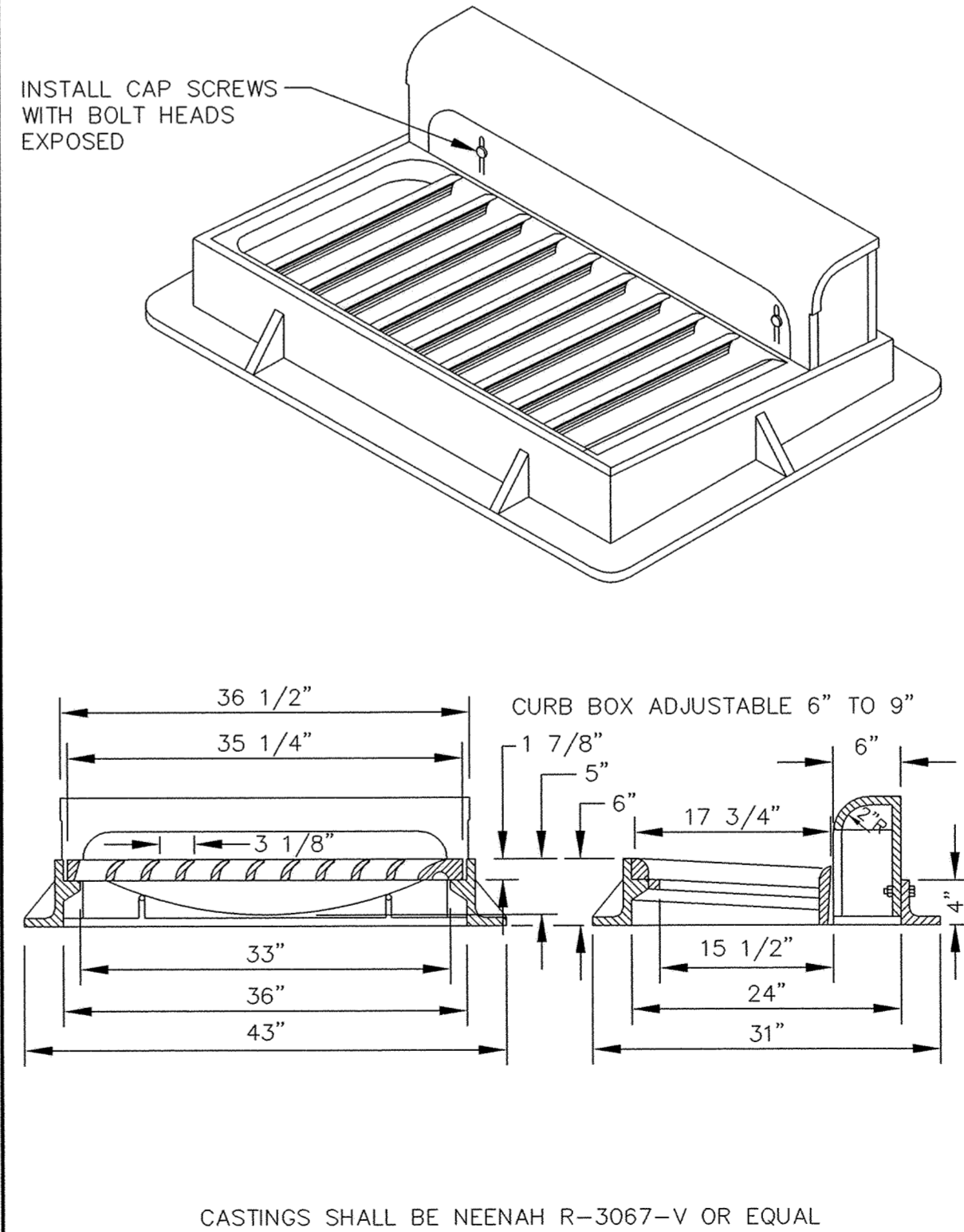
CONCRETE PIPE JOINT TIES



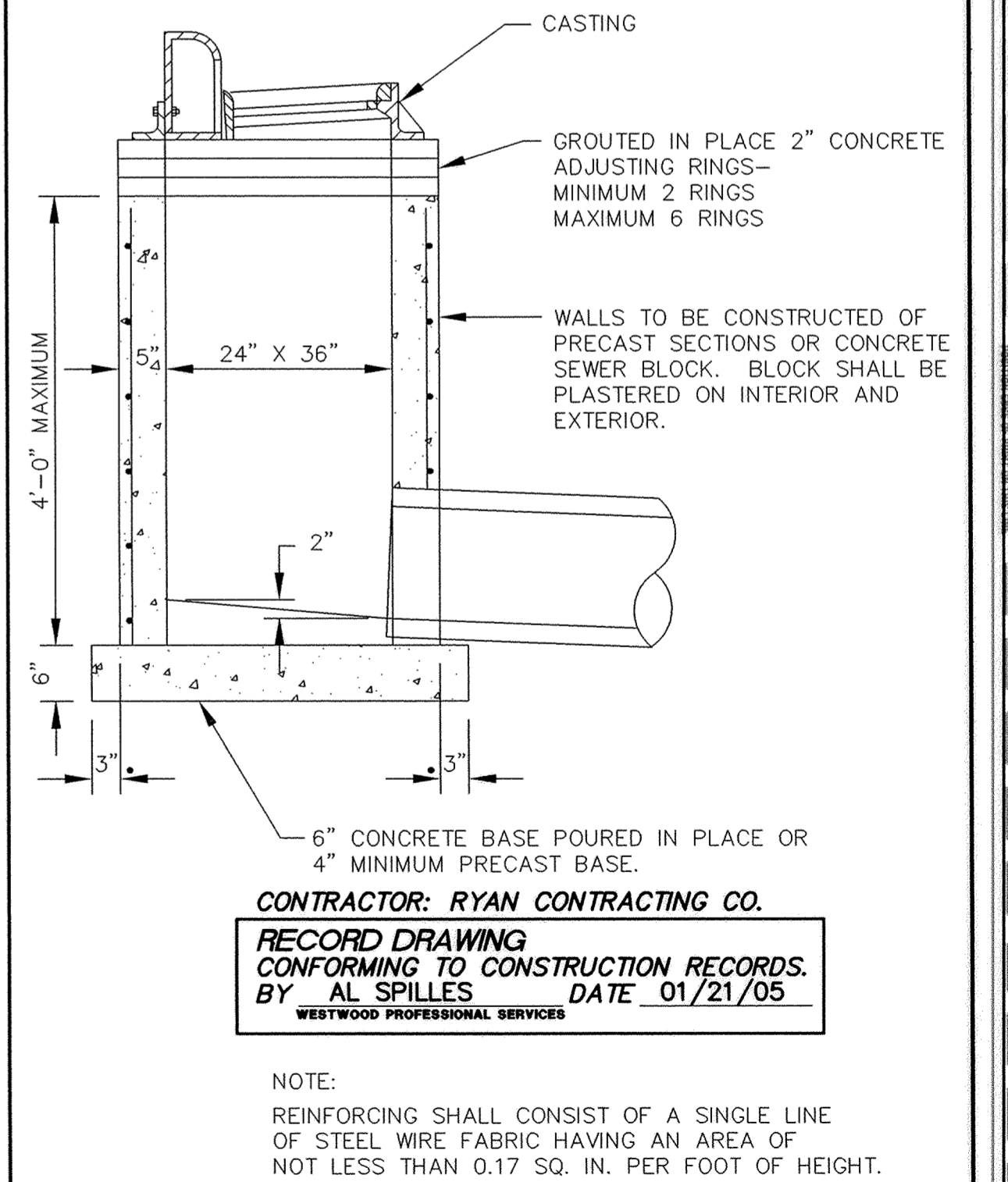
GRATE CASTING



STANDARD INLET CASTING



STANDARD INLET CASTING



SHALLOW CATCH BASIN

DESIGNED BY: --- DRAWN BY: ---  
APPROVED: --- JOB NUMBER ---  
CAD DATE: April 14, 1999 11:14:59 a.m.  
CAD FILE: 230000m\ER-SM.DWG

I HEREBY CERTIFY THAT THIS PLAN, SPECIFICATION, OR REPORT WAS PREPARED BY ME OR UNDER MY DIRECT SUPERVISION AND THAT I AM A DULY REGISTERED PROFESSIONAL ENGINEER UNDER THE LAWS OF THE STATE OF MINNESOTA.

DATE: \_\_\_\_\_ REG. NO. \_\_\_\_\_

NO.	DATE	BY	REVISION DESCRIPTION
1	01/21/05	AS	RECORD DRAWING

1326 ENERGY PARK DRIVE  
ST. PAUL, MINNESOTA 55108  
(612) 644-4389

**Howard R. Green Company**  
CONSULTING ENGINEERS

CITY OF ELK RIVER  
TROTT BROOK CROSSING - PHASE ONE  
STORM SEWER DETAILS

SHEET NO.  
16  
OF  
18

DRAWING NUMBER

DRAWING NUMBER

DRAWING NUMBER

DRAWING NUMBER